

<https://helda.helsinki.fi>

---

## Mendelian randomisation analysis strongly implicates adiposity with risk of developing colorectal cancer

Jarvis, David

2016-07-12

---

Jarvis , D , Mitchell , J S , Law , P J , Palin , K , Tuupanen , S , Gylfe , A , Hanninen , U A , Cajuso , T , Tanskanen , T , Kondelin , J , Kaasinen , E , Sarin , A-P , Kaprio , J , Eriksson , J G , Rissanen , H , Knekt , P , Pukkala , E , Jousilahti , P , Salomaa , V , Ripatti , S , Palotie , A , Järvinen , H , Renkonen-Sinisalo , L , Lepistö , A , Bohm , J , Mecklin , J-P , Al-Tassan , N A , Palles , C , Martin , L , Barclay , E , Farrington , S M , Timofeeva , M N , Meyer , B F , Wakil , S M , Campbell , H , Smith , C G , Idziaszczyk , S , Maughan , T S , Kaplan , R , Kerr , R , Kerr , D , Buchanan , D D , Win , A K , Hopper , J L , Jenkins , M A , Lindor , N M , Newcomb , P A , Gallinger , S , Conti , D , Schumacher , F , Casey , G , Taipale , J , Aaltonen , L A , Cheadle , J P , Dunlop , M G , Tomlinson , I P & Houlston , R S 2016 , ' Mendelian randomisation analysis strongly implicates adiposity with risk of developing colorectal cancer ' , British Journal of Cancer , vol. 115 , no. 2 , pp. 266-272 . <https://doi.org/10.1038/bjc.2016.188>

---

<http://hdl.handle.net/10138/167038>

<https://doi.org/10.1038/bjc.2016.188>

---

publishedVersion

---

*Downloaded from Helda, University of Helsinki institutional repository.*

*This is an electronic reprint of the original article.*

*This reprint may differ from the original in pagination and typographic detail.*

*Please cite the original version.*

Keywords: Mendelian randomisation; adiposity; colorectal cancer

# Mendelian randomisation analysis strongly implicates adiposity with risk of developing colorectal cancer

David Jarvis<sup>1,34</sup>, Jonathan S Mitchell<sup>1,34</sup>, Philip J Law<sup>1</sup>, Kimmo Palin<sup>2,3</sup>, Sari Tuupanen<sup>2,3</sup>, Alexandra Gylfe<sup>2,3,35</sup>, Ulrika A Hänninen<sup>2,3</sup>, Tatiana Cajuso<sup>2,3</sup>, Tomas Tanskanen<sup>2,3</sup>, Johanna Kondelin<sup>2,3</sup>, Eevi Kaasinen<sup>2,3</sup>, Antti-Pekka Sarin<sup>4</sup>, Jaakko Kaprio<sup>4,5</sup>, Johan G Eriksson<sup>5,6,7</sup>, Harri Rissanen<sup>5</sup>, Paul Knekt<sup>5</sup>, Eero Pukkala<sup>8,9</sup>, Pekka Jousilahti<sup>5</sup>, Veikko Salomaa<sup>5</sup>, Samuli Ripatti<sup>4</sup>, Aarno Palotie<sup>4,10,11,12</sup>, Heikki Järvinen<sup>13</sup>, Laura Renkonen-Sinisalo<sup>14</sup>, Anna Lepistö<sup>14</sup>, Jan Böhm<sup>15</sup>, Jukka-Pekka Mecklin<sup>16</sup>, Nada A Al-Tassan<sup>17</sup>, Claire Palles<sup>18</sup>, Lynn Martin<sup>18</sup>, Ella Barclay<sup>18</sup>, Susan M Farrington<sup>19,20</sup>, Maria N Timofeeva<sup>19</sup>, Brian F Meyer<sup>17</sup>, Salma M Wakil<sup>17</sup>, Harry Campbell<sup>21</sup>, Christopher G Smith<sup>22</sup>, Shelley Idziaszczyk<sup>22</sup>, Timothy S Maughan<sup>23</sup>, Richard Kaplan<sup>24</sup>, Rachel Kerr<sup>25</sup>, David Kerr<sup>26</sup>, Daniel D Buchanan<sup>27,28</sup>, Aung K Win<sup>28</sup>, John L Hopper<sup>28</sup>, Mark A Jenkins<sup>28</sup>, Noralane M Lindor<sup>29</sup>, Polly A Newcomb<sup>30</sup>, Steve Gallinger<sup>31</sup>, David Conti<sup>32</sup>, Fred Schumacher<sup>32</sup>, Graham Casey<sup>32</sup>, Jussi Taipale<sup>2,3,33</sup>, Lauri A Aaltonen<sup>2,3</sup>, Jeremy P Cheadle<sup>22</sup>, Malcolm G Dunlop<sup>19</sup>, Ian P Tomlinson<sup>18</sup> and Richard S Houlston<sup>\*,1</sup>

**Background:** Observational studies have associated adiposity with an increased risk of colorectal cancer (CRC). However, such studies do not establish a causal relationship. To minimise bias from confounding we performed a Mendelian randomisation (MR) analysis to examine the relationship between adiposity and CRC.

**Methods:** We used SNPs associated with adult body mass index (BMI), waist-hip ratio (WHR), childhood obesity and birth weight as instrumental variables in a MR analysis of 9254 CRC cases and 18 386 controls.

**Results:** In the MR analysis, the odds ratios (ORs) of CRC risk per unit increase in BMI, WHR and childhood obesity were 1.23 (95% CI: 1.02–1.49,  $P=0.033$ ), 1.59 (95% CI: 1.08–2.34,  $P=0.019$ ) and 1.07 (95% CI: 1.03–1.13,  $P=0.018$ ), respectively. There was no evidence for association between birth weight and CRC (OR=1.22, 95% CI: 0.89–1.67,  $P=0.22$ ). Combining these data with a concurrent MR-based analysis for BMI and WHR with CRC risk (totalling to 18 190 cases, 27 617 controls) provided increased support, ORs for BMI and WHR were 1.26 (95% CI: 1.10–1.44,  $P=7.7 \times 10^{-4}$ ) and 1.40 (95% CI: 1.14–1.72,  $P=1.2 \times 10^{-3}$ ), respectively.

**Conclusions:** These data provide further evidence for a strong causal relationship between adiposity and the risk of developing CRC highlighting the urgent need for prevention and treatment of adiposity.

Colorectal cancer (CRC) is a major public health problem in economically developed countries (Forman *et al*, 2014). Migration and epidemiological studies have established that diet and other

lifestyle factors have a major role in the aetiology of CRC (Haggard and Boushey, 2009). Among the lifestyle factors that have an impact on CRC risk, high body mass index (BMI) has generally

\*Correspondence: Professor RS Houlston; E-mail: richard.houlston@icr.ac.uk

<sup>34</sup>These authors contributed equally to this work.

<sup>35</sup>Current address: Human Longevity Inc., La Jolla, CA 92121, USA.

Received 29 January 2016; revised 9 May 2016; accepted 14 May 2016; published online 23 June 2016

© 2016 Cancer Research UK. All rights reserved 0007–0920/16



been reported to be associated with an increased risk in observational studies (Bianchini *et al*, 2002; Bardou *et al*, 2013), with some evidence for a stronger influence being shown for men (Pan *et al*, 2004; Moghaddam *et al*, 2007). There is also evidence for an inverse relationship between adiposity at a young age and cancer development (Carpenter *et al*, 2003; Yang *et al*, 2014). The association between BMI and CRC in these observational studies does not, however, necessarily establish a causal relationship. Specifically, these studies cannot entirely exclude the possibility of the observed association being the consequence of confounding factors, such as socio-economic status, alcohol and other lifestyle factors (Moghaddam *et al*, 2007), whereas some studies have failed to exclude the possibility of reverse causation (Smith and Ebrahim, 2003).

An alternative to a traditional observational epidemiology study is the Mendelian randomisation (MR) approach. The strategy of MR uses genetic markers known to be associated with a potential risk factor in the assessment of its effect on another trait or disease (Lawlor *et al*, 2008). These markers, or instrumental variables (IV), rely on a number of assumptions, namely that the IVs are solely associated with the trait or disease, and the IVs are independent of confounders. This methodology permits the nature of the relation between the risk factor and the trait or disease to be assessed without the limitations present within observational studies, such as confounding factors, and importantly establish whether an association is causal. A further attribute of MR is the avoidance of the influence of factors whose effect may be time sensitive, for example weight loss being a consequence of CRC. Thus, an IV has the potential to more accurately assess lifetime exposure when compared with measurements of potential risk factors recorded in an observational study.

In the present study we examined, using MR, the impact of four metrics of adiposity on the risk of developing CRC. The adiposity traits we considered were adult BMI, adult waist-hip ratio (WHR), childhood obesity and birth weight.

## MATERIALS AND METHODS

**CRC GWAS data sets.** Our MR analysis was based on data from seven previously reported genome-wide association studies (GWAS) of CRC (Orlando *et al*, 2016). Briefly, these GWAS were all based on individuals with European ancestry and comprise: CCFR1 (1290 cases, 1055 controls), CCFR2 (796 cases, 2236 controls), COIN (2244 cases, 2162 controls), FINLAND (1172 cases, 8266 controls), UK1 (940 cases, 965 controls), Scotland1 (1012 cases, 1012 controls) and VQ58 (1800 cases, 2690 controls). Details of the genotyping, quality control and imputation of untyped single-nucleotide polymorphisms (SNPs) genotypes have been previously published. Summary statistics from the GWAS were used to calculate the ratio estimates for the adiposity-related SNPs.

**Instrumental variables.** For each of four adiposity traits (adult BMI, adult WHR, childhood obesity and birth weight), we used data from recent GWAS of individuals of European descent for each trait. Specifically for adult BMI, we used data from the Genetic Investigation of Anthropometric Traits (GIANT) consortium, which was based on an analysis of up to 339 224 individuals (Locke *et al*, 2015). For the WHR, data were obtained from a meta-analysis comprising 61 studies, made up of up to 190 803 individuals (Heid *et al*, 2010). For childhood obesity, data was obtained from 2480 children with extreme obesity and 7370 controls (Wheeler *et al*, 2013). Birth weight data was obtained from up to 69 308 individuals from 43 studies (Horikoshi *et al*, 2013).

We used SNPs that were declared genome-wide significant (i.e.,  $P \leq 5.0 \times 10^{-8}$ ) in these GWAS as IVs. From the 97 adult BMI-associated SNPs ( $\text{kg m}^{-2}$ ) as identified by Locke *et al* (2015), we

confined the analysis to 76 SNPs that were found in European populations, and were separated by at least 500 kb. In addition, we used 14 SNPs for WHR as reported by Heid *et al* (2010); nine SNPs reported by Wheeler *et al* (2013), which were associated with childhood obesity ( $>3$  s.d. from the mean of the BMI distribution); and the seven SNPs reported by Horikoshi *et al* (2013), which were associated with birth weight (kg) (Supplementary Table 1). None of these studies reported non-additive effects of the SNPs on the adiposity trait, hence per allele effects were considered additive. For each of the four adiposity traits we extracted the effect estimates and associated *P*-values of each SNP from the seven CRC GWAS.

**Statistical analysis.** We performed MR analysis to assess the association between each adiposity trait and CRC using summary statistics from the CRC GWAS, and the published effect size of the adiposity-related trait on CRC. As per Burgess *et al* (2015) the combined ratio estimate ( $\hat{\beta}$ ) of all SNPs associated with a particular adiposity trait on CRC risk was calculated under a fixed-effects model:

$$\hat{\beta} = \frac{\sum_k X_k Y_k \sigma_{Y_k}^{-2}}{\sum_k X_k^2 \sigma_{Y_k}^{-2}}$$

$X_k$  corresponds to the association between SNP  $k$  with the adiposity trait and  $Y_k$  is the association between SNP  $k$  and CRC risk with standard error  $\sigma_{Y_k}$ . The standard error of the combined ratio estimate is approximately given by

$$se(\hat{\beta}) = \sqrt{\frac{1}{\sum_k X_k^2 \sigma_{Y_k}^{-2}}}$$

We used MR-Egger and inverse weighted variance regression to examine for violation (e.g., from pleiotropy) of the standard IV assumptions in our analysis (Bowden *et al*, 2015). All analyses were performed using R software (R Development Core Team, Vienna, Austria) and we considered a *P*-value of  $<0.05$  as significant.

**Meta-analysis with published studies.** An overlapping concurrent study has recently been published which has also reported an MR analysis to estimate the causal association between adiposity and CRC risk (Thrift *et al*, 2015). The study was based on the analysis of 10 226 CRC cases and 10 286 controls from 11 GWAS, including the CCFR1 study, reporting on the impact of adult BMI and WHR on CRC. The genetic risk score for these two adiposity traits in this study and in our analysis was based on the same set of SNPs. Hence, to enhance our power to establish a relationship between genetically defined adiposity and CRC risk, we performed a meta-analysis of our study and this published study pooling summary estimates of effect size under a fixed-effects model, avoiding duplication of the CCFR1 study.

## RESULTS

In six of the seven CRC GWAS there was a positive relationship between BMI-increasing alleles and CRC risk (Figure 1). From the pooled analysis we identified an odds ratio (OR) of 1.23 in risk of CRC per  $\text{kg m}^{-2}$  increase of BMI (95% confidence interval (CI): 1.02–1.49,  $P=0.033$ , test for heterogeneity between studies  $I^2=0\%$ ,  $P_{\text{het}}=0.70$ ).

Although the relationship between WHR and childhood obesity with CRC was less consistent between studies than for BMI in the pooled analysis, we also identified a correlation between both adiposity traits and CRC risk (Figure 1). For each unit increase in WHR we observed an OR of 1.59 in CRC risk (95% CI: 1.08–2.34,  $P=0.019$  test for heterogeneity across studies  $I^2=45\%$ ,  $P_{\text{het}}=0.09$ ). For childhood obesity the OR for CRC was 1.07

(95% CI: 1.01–1.13,  $P=0.018$ , test for heterogeneity between studies  $I^2=0\%$ ,  $P_{het}=0.61$ ). In contrast to the relationship between BMI, WHR, and childhood obesity and CRC we observed no association with birth weight and risk ( $P=0.22$ , Figure 1).

Using both MR-Egger and IVW regression tests we did not detect violation of the standard IV assumptions in our MR analysis of BMI, WHR, childhood obesity or birth weight for CRC risk (Supplementary Figure 1, Supplementary Table 2).

The strongest reported SNP associations for BMI are provided by rs1558902 (*FTO*) and rs13021737 (*TMEM18*), which have a well-established impact on obesity (Frayling *et al.*, 2007; Rohde *et al.*, 2014). To examine if our findings of a correlation between BMI and CRC risk were primarily driven by these variants we performed a sensitivity analysis excluding these SNPs. The MR results remain statistically significant, albeit slightly less profound (OR=1.24, 95% CI: 1.01–1.51,  $P=0.035$ ). The association between each of the adiposity-related SNP and CRC risk is shown in Supplementary Figure 1.

Given there is correlation between measures of adiposity (Serdula *et al.*, 1993) we examined the specificity of each trait on CRC risk by repeating our analysis omitting SNPs if there were overlapping loci. With the exception of adult BMI and childhood obesity which share four associated loci *FTO* (rs1558902, rs1421085), *MC4R* (rs6567160, rs476828), *TMEM18* (rs13021737, rs12463617) and *NEGR1* (rs3101336) all of the adiposity-related SNPs are distinct. Omitting these overlapping SNPs from our MR analysis still provided evidence for a correlation between adult BMI and childhood obesity with CRC risk, albeit less significant than before (OR = 1.23, 95% CI: 1.00–1.51,  $P=0.049$  and OR = 1.10, 95% CI: 1.02–1.20,  $P=0.019$ , respectively).

To explore if there were gender-specific associations for CRC for each of the four adiposity traits, we performed a stratified analysis

of our data set. Although an increasing number of risk alleles for each trait was associated with an increased CRC in both men and women, only the relationship between adult WHR and CRC in men remained statistically significant (Supplementary Table 3; OR = 2.13, 95% CI: 1.18–3.87,  $P=0.013$ ).

In the meta-analysis combining these results with the data from Thrift *et al.* (2015), adult BMI was associated with an OR of 1.26 for CRC risk (95% CI: 1.10–1.44,  $P=7.7 \times 10^{-4}$ ) and adult WHR an OR of 1.40 for CRC risk (95% CI: 1.14–1.72,  $P=1.2 \times 10^{-3}$ ; Table 1). Although the association between genetically influenced adult BMI was only significant in women (ORs in females and males were 1.43, 95% CI: 1.17–1.74,  $P=4.3 \times 10^{-4}$  and 1.12, 95% CI: 0.92–1.38,  $P=0.26$ , respectively) and the WHR association was only significant for men (ORs in males and females were 1.63, 95% CI: 1.20–2.22,  $P=2.0 \times 10^{-3}$  and 1.22, 95% CI: 0.91–1.63,  $P=0.18$ , respectively) these differences were not statistically different ( $P$ -values for difference were 0.09 and 0.18, respectively).

DISCUSSION

In this study we have shown correlations between IVs for adult BMI, WHR and childhood obesity, and CRC risk. Even adjusting for multiple testing the correlations between IVs for adult BMI and WHR remained significant. The absence of data on childhood obesity in the study reported by Thrift *et al.* (2015), precluded meta-analysis of this metric of adiposity. We did not identify a relationship between the IVs for birth weight and CRC. Although this is less likely to be a determinant of CRC risk *per se*, we acknowledge that our power to demonstrate a relationship was limited. Indeed, even the IVs for adult BMI we used explain ~3% of the total phenotypic variation in BMI (Locke *et al.*, 2015).

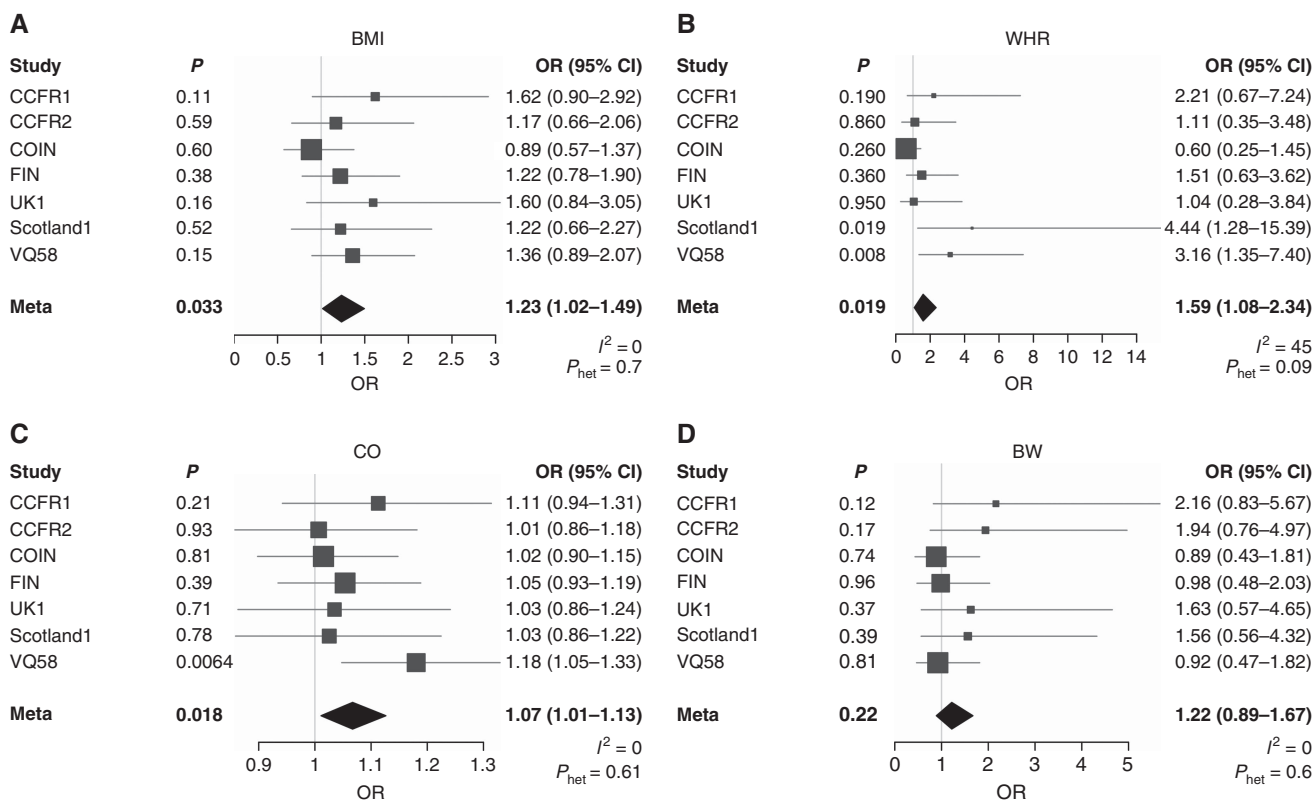


Figure 1. MR results of adiposity traits on CRC risk from seven GWAS studies and the meta-analysis. (A) Adult BMI; (B) adult WHR; (C) childhood obesity (CO); and (D) birth weight (BW). Boxes denote OR point estimates, with their areas proportional to the inverse variance weight of the estimate. Horizontal lines represent 95% CIs. The diamond represents the summary Ors, computed under a fixed-effects model, with 95% CI given by the width of the diamond. The unbroken vertical line is at the null value (OR = 1.0).



**Table 1.** MR results showing the relationship between CRC risk, and adult BMI and adult WHR in the meta-analysis with published data

Sex	BMI		WHR	
	OR (95% CI)	P value	OR (95% CI)	P value
All	1.26 (1.10–1.44)	$7.73 \times 10^{-4}$	1.40 (1.14–1.72)	$1.22 \times 10^{-3}$
Male	1.12 (0.92–1.38)	0.262	1.63 (1.20–2.22)	$1.98 \times 10^{-3}$
Female	1.43 (1.17–1.74)	$4.25 \times 10^{-4}$	1.22 (0.91–1.63)	0.178

Abbreviations: MR = Mendelian randomisation; CRC = colorectal cancer; BMI = body mass index; WHR = waist-hip ratio; OR = odds ratio; CI = confidence interval.

A possible explanation for a failure to demonstrate a significant correlation between genetic BMI and CRC risk could be that the distribution of body fat is a more important predictor of CRC risk in men rather than total body adiposity. Support for this postulate is that in men WHR has been reported to be superior in predicting CRC than BMI in observational studies. In our MR-based analysis we indeed found that WHR was associated with CRC in men but not in women. Given that the genetic risk score for WHR is derived from SNPs associated with WHR, which are adjusted for BMI, suggests that fat distribution may be important for CRC risk for men, whereas overall obesity is more important for CRC risk for women.

There is evidence that adiposity may have a more significant effect on the development of colon rather than rectal cancer. Given that the landscape of colonic and rectal cancers show differences relating IVs to molecular features is likely to be informative in terms of understanding disease aetiology (Yamauchi *et al*, 2012). Unfortunately the data sets on which our study has been based did not enable such analysis to be performed.

An important strength of our analysis is that by implementing an MR-based analysis we have avoided the potential biases in observational studies of factors such as recall bias and confounding. The combined ratio estimates of the impact of adiposity on CRC risk hold provided the marker is independent of factors that may confound the relationship between adiposity and CRC. The findings from our analysis are however reliant on a number of key assumptions. First, that the IVs are solely associated with CRC through its association with adiposity rather than pleiotropism, which would be seen by a departure from linearity of the relationship between SNPs and their effect size for adiposity and CRC. We did not observe such a relationship between CRC and adiposity risk SNPs. Second, the IV is independent of factors that confound observational associations. To date there is currently no evidence that the IVs we used are associated with factors that might confound adiposity CRC associations in conventional analyses. The generation of substantive IVs for highly complex traits is a major limitation of the MR-based strategy to investigate the aetiological basis of diseases like cancer.

Accepting these caveats our study findings can be viewed as quantifying the causal effect of adiposity on CRC risk. Moreover, they generally support previously published observational studies and provide further evidence for adiposity being a major risk factor for the development of CRC.

In the pooled analysis, genetically influenced BMI showed only a statistically significant association with CRC in women. This finding is discordant with observational studies which have generally found a stronger correlation in men. It is possible that some estimates from observational studies may have been biased toward the null if heavier women under-report their weight. Indeed it is noteworthy that this specific finding from the meta-analysis is primarily driven by data from Thrift *et al* (2015), hence independent replication is required.

The biological mechanism by which adiposity increases CRC risk remains to be established and several mechanisms have been

variously suggested as explaining the correlation. These include increased insulin and insulin-like growth factor signalling, chronic inflammation and signalling via adipokines, such as leptin. Furthermore, it is plausible that increased adiposity may alter the intestinal microbiome, contributing to gastrointestinal carcinogenesis (Harris *et al*, 2009; Kant and Hull, 2011; Aleman *et al*, 2014). Irrespective of the exact functional basis of the association between adiposity and CRC risk, demonstrating that it is causal makes obesity an important target for primary prevention of CRC in the population.

## ACKNOWLEDGEMENTS

We are grateful to all individuals who participated in the various studies. This study made use of genotyping data from the 1958 Birth Cohort, kindly made available by the Wellcome Trust Case Control Consortium 2. A full list of the investigators who contributed to the generation of the data is available at <http://www.wtccc.org.uk/>. At the Institute of Cancer Research, this work was supported by Cancer Research UK (C1298/A8362–Bobby Moore Fund for Cancer Research UK). Additional support was provided by the National Cancer Research Network. DJ was supported by a summer student grant from the BBRSC. In Edinburgh, the work was supported by Programme Grant funding from Cancer Research UK (C348/A12076). In Oxford, additional funding was provided by the Oxford Comprehensive Biomedical Research Centre and the EU FP7 CHIBCHA grant. Core infrastructure support to the Wellcome Trust Centre for Human Genetics, Oxford was provided by grant (090532/Z/09/Z). We are grateful to many colleagues within UK Clinical Genetics Departments (for CORGI) and to many collaborators who participated in the VICTOR and QUASAR2 trials. We also thank colleagues from the UK National Cancer Research Network (for NSCCG). Support from the European Union (FP7/2007–2013, grant 258236) and FP7 collaborative project SYSCOL and COST Action in the UK is also acknowledged (BM1206). The COIN and COIN-B trials were funded by Cancer Research UK and the Medical Research Council and were conducted with the support of the National Institute of Health Research Cancer Research Network. COIN and COIN-B translational studies were supported by the Bobby Moore Fund from Cancer Research UK, Tenovus, the Kidani Trust, Cancer Research Wales and the National Institute for Social Care and Health Research Cancer Genetics Biomedical Research Unit (2011–2014). NAA, BFM and SMW were funded and supported by KFSHRC. In Finland, this work was supported by grants from the Academy of Finland (Finnish Center of Excellence Program 2012–2017, 250345), the Jane and Aatos Erkko Foundation, the Finnish Cancer Society (to KP), the European Research Council (ERC; 268648), the Sigrid Juselius Foundation, SYSCOL, the Nordic Information for Action eScience Center (NIASC), the Nordic Center of Excellence financed by NordForsk (project 62721, to KP) and State Research Funding of Kuopio University Hospital (B1401). We acknowledge the computational resources provided by the ELIXIR node, hosted at the CSC–IT Center for Science, Finland, and funded by the Academy of Finland (grants 271642 and 263164), the Ministry of Education and Culture, Finland. VS was supported by the Finnish Academy (grant number 139635). Sample collection and genotyping in the Finnish Twin Cohort has been supported by the Wellcome Trust Sanger Institute, ENGAGE–European Network for Genetic and Genomic Epidemiology, FP7-HEALTH-F4-2007 (201413), the National Institute of Alcohol Abuse and Alcoholism (grants AA-12502 and AA-00145 to Richard J Rose, and K02AA018755 to Danielle M Dick) and the Academy of Finland (100499, 205585, 265240 and 263278 to Jaakko Kaprio (JK)). The work of the Colon Cancer

Family Registry (CCFR) was supported by the National Cancer Institute (UM1 CA167551), National Institutes of Health and through cooperative agreements with the following CCFR centres: Australasian Colorectal Cancer Family Registry (U01 CA074778, U01/U24 CA097735), USC Consortium Colorectal Cancer Family Registry (U01/U24 CA074799), Mayo Clinic Cooperative Familial Registry for Colon Cancer Studies (U01/U24 CA074800), Ontario Familial Colorectal Cancer Registry (U01/U24 CA074783), Seattle Colorectal Cancer Family Registry (U01/U24 CA074794) and University of Hawaii Colorectal Cancer Family Registry (U01/U24 CA074806). The CCFR Illumina GWAS was supported by funding from the National Cancer Institute, National Institutes of Health (U01 CA122839 and R01 CA143237 to GC). Seattle CCFR research was also supported by the Cancer Surveillance System of the Fred Hutchinson Cancer Research Center—Control Nos. N01-CN-67009 (1996–2003), N01-PC-35142 (2003–2010) and the Surveillance, Epidemiology and End Results (SEER) Program of the National Cancer Institute (Contract No. HHSN2612013000121, 2010–2017) with additional support from the Fred Hutchinson Cancer Research Center. The collection of cancer incidence data for the State of Hawaii used in this study was supported by the Hawai'i Department of Health as part of the statewide cancer reporting program mandated by Hawai'i Revised Statutes; the National Cancer Institute's Surveillance, Epidemiology and End Results Program (SEER) awarded to the University of Hawaii (Control Nos. N01-PC-67001 1996–2003, N01-PC-35137 2003–10, Contract Nos. HHSN26120100037C 2010–13, HHSN261201300009I 2010–). The collection of cancer incidence data used in this study was supported by the California Department of Public Health as part of the statewide cancer reporting program mandated by California Health and Safety Code Section 103885; the National Cancer Institute's Surveillance, Epidemiology and End Results Program—contract HHSN261201000035C—awarded to the University of Southern California, and—contract HHSN261201000034C—awarded to the Public Health Institute; and the Centers for Disease Control and Prevention's National Program of Cancer Registries, under agreement—U58DP003862-01—awarded to the California Department of Public Health.

## CONFLICT OF INTEREST

The authors declare no conflict of interest.

## DISCLAIMER

The ideas and opinions expressed herein are those of the author(s) and endorsement by the State of Hawai'i, Department of Health, the National Cancer Institute, SEER Program, the State of California, Department of Public Health the National Cancer Institute, and the Centers for Disease Control and Prevention or their Contractors and Subcontractors, is not intended nor should be inferred. The content of this manuscript does not necessarily reflect the views or policies of the National Cancer Institute or any of the collaborating centers in the CCFR, nor does mention of trade names, commercial products or organisations imply endorsement by the US Government or the CCFR.

## REFERENCES

- Aleman JO, Eusebi LH, Ricciardiello L, Patidar K, Sanyal AJ, Holt PR (2014) Mechanisms of obesity-induced gastrointestinal neoplasia. *Gastroenterology* **146**(2): 357–373.
- Bardou M, Barkun AN, Martel M (2013) Obesity and colorectal cancer. *Gut* **62**(6): 933–947.
- Bianchini F, Kaaks R, Vainio H (2002) Overweight, obesity, and cancer risk. *Lancet Oncol* **3**(9): 565–574.
- Bowden J, Davey Smith G, Burgess S (2015) Mendelian randomization with invalid instruments: effect estimation and bias detection through Egger regression. *Int J Epidemiol* **44**(2): 512–525.
- Burgess S, Scott RA, Timpson NJ, Davey Smith G, Thompson SG, Consortium E-I (2015) Using published data in Mendelian randomization: a blueprint for efficient identification of causal risk factors. *Eur J Epidemiol* **30**(7): 543–552.
- Carpenter CL, Ross RK, Paganini-Hill A, Bernstein L (2003) Effect of family history, obesity and exercise on breast cancer risk among postmenopausal women. *Int J Cancer* **106**(1): 96–102.
- Forman D, Bray F, Brewster DH, Gombe Mbalawa C, Kohler B, Piñeros M, Steliarova-Foucher E, Swaminathan R, Ferlay J (2014) Cancer incidence in five continents IARC Scientific publications X(164): 917.
- Frayling TM, Timpson NJ, Weedon MN, Zeggini E, Freathy RM, Lindgren CM, Perry JR, Elliott KS, Lango H, Rayner NW, Shields B, Harries LW, Barrett JC, Ellard S, Groves CJ, Knight B, Patch AM, Ness AR, Ebrahim S, Lawlor DA, Ring SM, Ben-Shlomo Y, Jarvelin MR, Sovio U, Bennett AJ, Melzer D, Ferrucci L, Loos RJ, Barroso I, Wareham NJ, Karpe F, Owen KR, Cardon LR, Walker M, Hitman GA, Palmer CN, Doney AS, Morris AD, Smith GD, Hattersley AT, McCarthy MI (2007) A common variant in the FTO gene is associated with body mass index and predisposes to childhood and adult obesity. *Science* **316**(5826): 889–894.
- Hagggar FA, Boushey RP (2009) Colorectal cancer epidemiology: incidence, mortality, survival, and risk factors. *Clin Colon Rectal Surg* **22**(4): 191–197.
- Harriss DJ, Atkinson G, George K, Cable NT, Reilly T, Haboubi N, Zwahlen M, Egger M, Renehan AG, group CC (2009) Lifestyle factors and colorectal cancer risk (1): systematic review and meta-analysis of associations with body mass index. *Colorectal Dis* **11**(6): 547–563.
- Heid IM, Jackson AU, Randall JC, Winkler TW, Qi L, Steinthorsdottir V, Thorleifsson G, Zillikens MC, Speliotes EK, Magi R, Workalemahu T, White CC, Bouatia-Naji N, Harris TB, Berndt SI, Ingelsson E, Willer CJ, Weedon MN, Luan J, Vedantam S, Esko T, Kilpelainen TO, Kutalik Z, Li S, Monda KL, Dixon AL, Holmes CC, Kaplan LM, Liang L, Min JL, Moffatt MF, Molony C, Nicholson G, Schadt EE, Zondervan KT, Feitosa MF, Ferreira T, Lango Allen H, Weyant RJ, Wheeler E, Wood AR, Magic, Estrada K, Goddard ME, Lettre G, Mangino M, Nyholt DR, Purcell S, Smith AV, Visscher PM, Yang J, McCarrroll SA, Nemes J, Voight BF, Absher D, Amin N, Aspelund T, Coin L, Glazer NL, Hayward C, Heard-Costa NL, Hottenga JJ, Johansson A, Johnson T, Kaakinen M, Kapur K, Ketkar S, Knowles JW, Kraft P, Kraja AT, Lamina C, Leitzmann MF, McKnight B, Morris AP, Ong KK, Perry JR, Peters MJ, Polasek O, Prokopenko I, Rayner NW, Ripatti S, Rivadeneira F, Robertson NR, Sanna S, Sovio U, Surakka I, Teumer A, van Wingerden S, Vitart V, Zhao JH, Cavalcanti-Proenca C, Chines PS, Fisher E, Kulzer JR, Lecoeur C, Narisu N, Sandholt C, Scott LJ, Silander K, Stark K, Tammeso ML, Teslovich TM, Timpson NJ, Watanabe RM, Welch R, Chasman DI, Cooper MN, Jansson JO, Kettunen J, Lawrence RD, Pellikka N, Perola M, Vandenput L, Alavere H, Almgren P, Atwood LD, Bennett AJ, Biffar R, Bonnycastle LL, Bornstein SR, Buchanan TA, Campbell H, Day IN, Dei M, Dorr M, Elliott P, Erdos MR, Eriksson JG, Freimer NB, Fu M, Gagel S, Geus EJ, Gjesing AP, Grallert H, Grassler J, Groves CJ, Guiducci C, Hartikainen AL, Hassanali N, Havulinna AS, Herzog KH, Hicks AA, Hui J, Igl W, Jousilahti P, Julia A, Kajantie E, Kinnunen L, Kolcic I, Koskinen S, Kovacs P, Kroemer HK, Krzlj V, Kuusisto J, Kvaloy K, Laitinen J, Lantieri O, Lathrop GM, Lokki ML, Luben RN, Ludwig B, McArdle WL, McCarthy A, Morken MA, Nelis M, Neville MJ, Pare G, Parker AN, Peden JF, Pichler I, Pietilainen KH, Platou CG, Pouta A, Ridderstrale M, Samani NJ, Saramies J, Sinisalo J, Smit JH, Strawbridge RJ, Stringham HM, Swift AJ, Teder-Laving M, Thomson B, Usala G, van Meurs JB, van Ommen GJ, Vatin V, Volpato CB, Wallaschofski H, Walters GB, Widen E, Wild SH, Willemsen G, Witte DR, Zgaga L, Zitting P, Beilby JP, James AL, Kahonen M, Lehtimäki T, Nieminen MS, Ohlsson C, Palmer LJ, Raitakari O, Ridker PM, Stumvoll M, Tonjes A, Viikari J, Balkau B, Ben-Shlomo Y, Bergman RN, Boeing H, Smith GD, Ebrahim S, Froguel P, Hansen T, Hengstenberg C, Hveem K, Isomaa B, Jorgensen T, Karpe F, Khaw KT, Laakso M, Lawlor DA, Marre M, Meitinger T, Metspalu A, Midhjel K, Pedersen O, Salomaa V, Schwarz PE, Tuomi T, Tuomilehto J, Valle TT, Wareham NJ, Arnold AM, Beckmann JS, Bergmann S, Boerwinkle E, Boomsma DI, Caulfield MJ, Collins FS, Eiriksdottir G, Gudnason V, Gyllenstein U, Hamsten A, Hattersley AT, Hofman A, Hu FB, Illig T, Iribarren C, Jarvelin MR, Kao WH, Kaprio J, Launer LJ,

- Munroe PB, Oostra B, Penninx BW, Pramstaller PP, Psaty BM, Quertermous T, Rissanen A, Rudan I, Shuldiner AR, Soranzo N, Spector TD, Syvanen AC, Uda M, Uitterlinden A, Volzke H, Vollenweider P, Wilson JF, Witteman JC, Wright AF, Abecasis GR, Boehnke M, Borecki IB, Deloukas P, Frayling TM, Groop LC, Haritunians T, Hunter DJ, Kaplan RC, North KE, O'Connell JR, Peltonen L, Schlessinger D, Strachan DP, Hirschhorn JN, Assimes TL, Wichmann HE, Thorsteinsdottir U, van Duijn CM, Stefansson K, Cupples LA, Loos RJ, Barroso I, McCarthy MI, Fox CS, Mohlke KL, Lindgren CM (2010) Meta-analysis identifies 13 new loci associated with waist-hip ratio and reveals sexual dimorphism in the genetic basis of fat distribution. *Nat Genet* 42(11): 949–960.
- Horikoshi M, Yaghootkar H, Mook-Kanamori DO, Sovio U, Taal HR, Hennig BJ, Bradfield JP, St Pourcain B, Evans DM, Charoen P, Kaakinen M, Cousminer DL, Lehtimäki T, Kreiner-Møller E, Warrington NM, Bustamante M, Feenstra B, Berry DJ, Thiering E, Pfaf T, Barton SJ, Shields BM, Kerkhof M, van Leeuwen EM, Fulford AJ, Kutalik Z, Zhao JH, den Hoed M, Mahajan A, Lindi V, Goh LK, Hottenga JJ, Wu Y, Raitakari OT, Harder MN, Meirhaeghe A, Ntalla I, Salem RM, Jameson KA, Zhou K, Monies DM, Lagou V, Kirin M, Heikkinen J, Adair LS, Alkuraya FS, Al-Odaib A, Amouyel P, Andersson EA, Bennett AJ, Blakemore AL, Buxton JL, Dallongeville J, Das S, de Geus EJ, Estivill X, Flexeder C, Froguel P, Geller F, Godfrey KM, Gottrand F, Groves CJ, Hansen T, Hirschhorn JN, Hofman A, Hollegaard MV, Hougaard DM, Hypponen E, Inskip HM, Isaacs A, Jorgensen T, Kanaka-Gantenbein C, Kemp JP, Kiess W, Kilpeläinen TO, Klopp N, Knight BA, Kuzawa CW, McMahon G, Newnham JP, Niinikoski H, Oostra BA, Pedersen L, Postma DS, Ring SM, Rivadeneira F, Robertson NR, Sebert S, Simell O, Slowinski T, Tiesler CM, Tonjes A, Vaag A, Viikari JS, Vink JM, Vissing NH, Wareham NJ, Willemssen G, Witte DR, Zhang H, Zhao J. Meta-Analyses of G, Insulin-related traits C, Wilson JF, Stumvoll M, Prentice AM, Meyer BF, Pearson ER, Boreham CA, Cooper C, Gillman MW, Dedoussis GV, Moreno LA, Pedersen O, Saarinen M, Mohlke KL, Boomsma DI, Saw SM, Lakka TA, Korner A, Loos RJ, Ong KK, Vollenweider P, van Duijn CM, Koppelman GH, Hattersley AT, Holloway JW, Hoche B, Heinrich J, Power C, Melbye M, Guxens M, Pennell CE, Bonnelykke K, Bisgaard H, Eriksson JG, Widen E, Hakonarson H, Uitterlinden AG, Pouta A, Lawlor DA, Smith GD, Frayling TM, McCarthy MI, Grant SF, Jaddoe VW, Jarvelin MR, Timpson NJ, Prokopenko I, Freathy RM. Early Growth Genetics C (2013) New loci associated with birth weight identify genetic links between intrauterine growth and adult height and metabolism. *Nat Genet* 45(1): 76–82.
- Kant P, Hull MA (2011) Excess body weight and obesity—the link with gastrointestinal and hepatobiliary cancer. *Nat Rev Gastroenterol Hepatol* 8(4): 224–238.
- Lawlor DA, Harbord RM, Sterne JA, Timpson N, Davey Smith G (2008) Mendelian randomization: using genes as instruments for making causal inferences in epidemiology. *Stat Med* 27(8): 1133–1163.
- Locke AE, Kahali B, Berndt SI, Justice AE, Pers TH, Day FR, Powell C, Vedantam S, Buchkovich ML, Yang J, Croteau-Chonka DC, Esko T, Fall T, Ferreira T, Gustafsson S, Kutalik Z, Luan J, Magi R, Randall JC, Winkler TW, Wood AR, Workalemahu T, Faul JD, Smith JA, Hua Zhao J, Zhao W, Chen J, Fehrmann R, Hedman AK, Karjalainen J, Schmidt EM, Absher D, Amin N, Anderson D, Beekman M, Bolton JL, Bragg-Gresham JL, Buyske S, Demirkan A, Deng G, Ehret GB, Feenstra B, Feitosa MF, Fischer K, Goel A, Gong J, Jackson AU, Kanoni S, Kleber ME, Kristiansson K, Lim U, Lotay V, Mangino M, Mateo Leach I, Medina-Gomez C, Medland SE, Nalls MA, Palmer CD, Pasko D, Pechlivanis S, Peters MJ, Prokopenko I, Shungin D, Stancakova A, Strawbridge RJ, Ju Sung Y, Tanaka T, Teumer A, Trompet S, van der Laan SW, van Setten J, Van Vliet-Ostaptchouk JV, Wang Z, Yengo L, Zhang W, Isaacs A, Albrecht E, Arnlöv J, Arscott GM, Attwood AP, Bandinelli S, Barrett A, Bas IN, Bellis C, Bennett AJ, Berne C, Blagieva R, Blüher M, Bohringer S, Bonnycastle LL, Bottcher J, Boyd HA, Bruinenberg M, Caspersen IH, Ida Chen YD, Clarke R, Daw EW, de Craen AJ, Delgado G, Dimitriou M, Doney AS, Eklund N, Estrada K, Eury E, Folkersen L, Fraser RM, Garcia ME, Geller F, Giedraitis V, Gigante G, Go AS, Golay A, Goodall AH, Gordon SD, Gorski M, Grabe HJ, Grallert H, Grammer TB, Grassler J, Gronberg H, Groves CJ, Gusto G, Haessler J, Hall P, Haller T, Hallmans G, Hartman CA, Hassinen M, Hayward C, Heard-Costa NL, Helmer Q, Hengstenberg C, Holmen O, Hottenga JJ, James AL, Jeff JM, Johansson A, Jolley J, Juliusdottir T, Kinnunen L, Koenig W, Koskenvuo M, Kratzer W, Laitinen J, Lamina C, Leander K, Lee NR, Lichtner P, Lind L, Lindstrom J, Sin Lo K, Lobbens S, Lörber R, Lu Y, Mach F, Magnusson PK, Mahajan A, McArdle WL, McLachlan S, Menni C, Merger S, Mihailov E, Milani L, Moayyeri A, Monda KL, Morken MA, Mulas A, Müller G, Muller-Nurasyid M, Musk AW, Nagaraja R, Nothen MM, Nolte IM, Pilz S, Rayner NW, Renstrom F, Rettig R, Ried JS, Ripke S, Robertson NR, Rose LM, Sanna S, Scharnagl H, Scholtens S, Schumacher FR, Scott WR, Seufferlein T, Shi J, Vernon Smith A, Smolonska J, Stanton AV, Steinthorsdottir V, Stirrups K, Stringham HM, Sundstrom J, Swertz MA, Swift AJ, Syvanen AC, Tan ST, Tayo BO, Thorand B, Thorleifsson G, Tyrer JP, Uh HW, Vandenput L, Verhulst FC, Vermeulen SH, Verweij N, Vonk JM, Waite LL, Warren HR, Waterworth D, Weedon MN, Wilkens LR, Willenborg C, Wilsgaard T, Wojczynski MK, Wong A, Wright AF, Zhang Q. LifeLines Cohort SBrennan EP, Choi M, Dastani Z, Drong AW, Eriksson P, Franco-Cereceda A, Gadin JR, Gharavi AG, Goddard ME, Handsaker RE, Huang J, Karpe F, Kathiresan S, Keildson S, Kiryluk K, Kubo M, Lee JY, Liang L, Lifton RP, Ma B, McCarroll SA, McKnight AJ, Min JL, Moffatt MF, Montgomery GW, Murabito JM, Nicholson G, Nyholt DR, Okada Y, Perry JR, Dorajoo R, Reinmaa E, Salem RM, Sandholm N, Scott RA, Stolk L, Takahashi A, Tanaka T, Van't Hooft FM, Vinkhuysen AA, Westra HJ, Zheng W, Zondervan KT. Consortium AD, Group A-BW, Consortium CAD, Consortium CK, GIGC, Icbp, Investigators M, Mu TC, Consortium MI, Consortium P, ReproGen C, Consortium G, International Endogene CHeath AC, Arveiler D, Bakker SJ, Beilby J, Bergman RN, Blangero J, Bovet P, Campbell H, Caulfield MJ, Cesana G, Chakravarti A, Chasman DI, Chines PS, Collins FS, Crawford DC, Cupples LA, Cusi D, Danesh J, de Faire U, den Ruijter HM, Dominiczak AF, Erbel R, Erdmann J, Eriksson JG, Farrall M, Felix SB, Ferrannini E, Ferrières J, Ford I, Forouhi NG, Forrester T, Franco OH, Gansevoort RT, Gejman PV, Gieger C, Gottesman O, Gudnason V, Gyllenstein U, Hall AS, Harris TB, Hattersley AT, Hicks AA, Hindorf LA, Hingorani AD, Hofman A, Homuth G, Hovingh GK, Humphries SE, Hunt SC, Hypponen E, Illig T, Jacobs KB, Jarvelin MR, Jockel KH, Johansen B, Jousilahti P, Jukema JW, Jula AM, Kaprio J, Kastelein JJ, Keinanen-Kiukkaanniemi SM, Kiemeny LA, Knekt P, Kooner JS, Kooperberg C, Kovacs P, Kraja AT, Kumari M, Kuusisto J, Lakka TA, Langenberg C, Le Marchand L, Lehtimäki T, Lyssenko V, Mannisto S, Marette A, Matisse TC, McKenzie CA, McKnight B, Moll FL, Morris AD, Morris AP, Murray JC, Nelis M, Ohlsson C, Oldehinkel AJ, Ong KK, Madden PA, Pasterkamp G, Peden JF, Peters A, Postma DS, Pramstaller PP, Price JF, Qi L, Raitakari OT, Rankinen T, Rao DC, Rice TK, Ridker PM, Rioux JD, Ritchie MD, Rudan I, Salomaa V, Samani NJ, Saramies J, Sarzynski MA, Schunkert H, Schwarz PE, Sever P, Shuldiner AR, Sinisalo J, Stolk RP, Strauch K, Tonjes A, Tregouet DA, Tremblay A, Tremoli E, Virtamo J, Vohl MC, Volker U, Waeber G, Willemssen G, Witteman JC, Zillikens MC, Adair LS, Amouyel P, Asselbergs FW, Assimes TL, Bochud M, Boehm BO, Boerwinkle E, Bornstein SR, Bottinger EP, Bouchard C, Cauchi S, Chambers JC, Chanock SJ, Cooper RS, de Bakker PI, Dedoussis G, Ferrucci L, Franks PW, Froguel P, Groop LC, Haiman CA, Hamsten A, Hui J, Hunter DJ, Hveem K, Kaplan RC, Kivimäki M, Kuh D, Laakso M, Liu Y, Martin NG, Marz W, Melbye M, Metspalu A, Moebus S, Munroe PB, Njolstad I, Oostra BA, Palmer CN, Pedersen NL, Perola M, Perusse L, Peters U, Power C, Quertermous T, Rauramaa R, Rivadeneira F, Saaristo TE, Saleheen D, Sattar N, Schadt EE, Schlessinger D, Slagboom PE, Snieder H, Spector TD, Thorsteinsdottir U, Stumvoll M, Tuomilehto J, Uitterlinden AG, Uusitupa M, van der Harst P, Walker M, Wallaschofski H, Wareham NJ, Watkins H, Weir DR, Wichmann HE, Wilson JF, Zanen P, Borecki IB, Deloukas P, Fox CS, Heid IM, O'Connell JR, Strachan DP, Stefansson K, van Duijn CM, Abecasis GR, Franke L, Frayling TM, McCarthy MI, Visscher PM, Scherag A, Willer CJ, Boehnke M, Mohlke KL, Lindgren CM, Beckmann JS, Barroso I, North KE, Ingelsson E, Hirschhorn JN, Loos RJ, Speliotes EK (2015) Genetic studies of body mass index yield new insights for obesity biology. *Nature* 518(7538): 197–206.
- Moghaddam AA, Woodward M, Huxley R (2007) Obesity and risk of colorectal cancer: a meta-analysis of 31 studies with 70,000 events. *Cancer Epidemiol Biomarkers Prev* 16(12): 2533–2547.
- Orlando G, Law PJ, Palin K, Tuupanen S, Gylfe A, Hänninen U, Cajuso T, Tanskanen T, Kondelin J, Kaasinen E, Sarin A-P, Kaprio J, Eriksson JG, Rissanen H, Knekt P, Pukkala E, Jousilahti P, Salomaa V, Ripatti S, Palotie A, Järvinen H, Renkonen-Sinisalo L, Lepistö A, Böhm J, Meklin J-P, Al-Tassan NA, Palles C, Martin L, Barclay E, Tenesa A, Farrington S, Timofeeva MN, Meyer BF, Wakil SM, Campbell H,



- Smith CG, Idziaszczyk S, Maughan TS, Kaplan R, Kerr R, Kerr D, Buchanan DD, Win AK, Hopper J, Jenkins M, Lindor NM, Newcomb PA, Gallinger S, Conti D, Schumacher F, Casey G, Taipale J, Cheadle JP, Dunlop MG, Tomlinson IP, Aaltonen LA, Houlston RS (2016) Variation at 2q35 (PNKD and TMBIM1) influences colorectal cancer risk and identifies a pleiotropic effect with inflammatory bowel disease. *Hum Mol Genet.*
- Pan SY, Johnson KC, Ugnat AM, Wen SW, Mao Y. Canadian Cancer Registries Epidemiology Research G (2004) Association of obesity and cancer risk in Canada. *Am J Epidemiol* **159**(3): 259–268.
- Rohde K, Keller M, Klos M, Schleinitz D, Dietrich A, Schon MR, Gartner D, Lohmann T, Dressler M, Stumvoll M, Kovacs P, Bluher M, Bottcher Y (2014) Adipose tissue depot specific promoter methylation of TMEM18. *J Mol Med* **92**(8): 881–888.
- Serdula MK, Ivery D, Coates RJ, Freedman DS, Williamson DF, Byers T (1993) Do obese children become obese adults? A review of the literature. *Prevent Med* **22**(2): 167–177.
- Smith GD, Ebrahim S (2003) ‘Mendelian randomization’: can genetic epidemiology contribute to understanding environmental determinants of disease? *Int J Epidemiol* **32**(1): 1–22.
- Thrift AP, Gong J, Peters U, Chang-Claude J, Rudolph A, Slattery ML, Chan AT, Locke AE, Kahali B, Justice AE, Pers TH, Gallinger S, Hayes RB, Baron JA, Caan BJ, Ogino S, Berndt SI, Chanock SJ, Casey G, Haile RW, Du M, Harrison TA, Thornquist M, Duggan DJ, Le Marchand L, Lindor NM, Seminara D, Song M, Wu K, Thibodeau SN, Cotterchio M, Win AK, Jenkins MA, Hopper JL, Ulrich CM, Potter JD, Newcomb PA, Hoffmeister M, Brenner H, White E, Hsu L, Campbell PT (2015) Mendelian randomization study of body mass index and colorectal cancer risk. *Cancer Epidemiol Biomarkers Prev* **24**(7): 1024–1031.
- Wheeler E, Huang N, Bochukova EG, Keogh JM, Lindsay S, Garg S, Henning E, Blackburn H, Loos RJ, Wareham NJ, O’Rahilly S, Hurles ME, Barroso I, Farooqi IS (2013) Genome-wide SNP and CNV analysis identifies common and low-frequency variants associated with severe early-onset obesity. *Nat Genet* **45**(5): 513–517.
- Yamauchi M, Lochhead P, Morikawa T, Huttenhower C, Chan AT, Giovannucci E, Fuchs C, Ogino S (2012) Colorectal cancer: a tale of two sides or a continuum? *Gut* **61**(6): 794–797.
- Yang TO, Reeves GK, Green J, Beral V, Cairns BJ. Million Women Study C, Million Women Study C (2014) Birth weight and adult cancer incidence: large prospective study and meta-analysis. *Ann Oncol* **25**(9): 1836–1843.



This work is licensed under the Creative Commons Attribution 4.0 International License. To view a copy of this license, visit <http://creativecommons.org/licenses/by/4.0/>

<sup>1</sup>Division of Genetics and Epidemiology, The Institute of Cancer Research, London SW7 3RP, UK; <sup>2</sup>Genome-Scale Biology Research Program, Research Programs Unit, University of Helsinki 00014, Helsinki, Finland; <sup>3</sup>Department of Medical and Clinical Genetics, Medicum, University of Helsinki, Helsinki 00014, Finland; <sup>4</sup>Institute for Molecular Medicine Finland, University of Helsinki, Helsinki 00014, Finland; <sup>5</sup>National Institute for Health and Welfare, Helsinki 00271, Finland; <sup>6</sup>Folkhälsan Research Centre, Helsinki 00250, Finland; <sup>7</sup>Unit of General Practice and Primary Health Care, University of Helsinki, Helsinki University Hospital, Helsinki 00014, Finland; <sup>8</sup>Finnish Cancer Registry, Institute for Statistical and Epidemiological Cancer Research, Helsinki 00130, Finland; <sup>9</sup>School of Health Sciences, University of Tampere, Tampere 33014, Finland; <sup>10</sup>Department of Medicine, Analytic and Translational Genetics Unit, Massachusetts General Hospital, Boston, MA 02114, USA; <sup>11</sup>Program in Medical and Population Genetics, The Broad Institute of MIT and Harvard, Cambridge, MA 02142, USA; <sup>12</sup>Department of Neurology, Massachusetts General Hospital, Boston, MA 02114, USA; <sup>13</sup>Department of Surgery, Helsinki University Central Hospital, Hospital District of Helsinki and Uusimaa, Helsinki 00029, Finland; <sup>14</sup>Department of Surgery, Abdominal Center, Helsinki University Hospital Helsinki 00029, Finland; <sup>15</sup>Department of Pathology, Central Finland Central Hospital, Jyväskylä 40620, Finland; <sup>16</sup>Department of Surgery, Jyväskylä Central Hospital, University of Eastern Finland, Jyväskylä 40620, Finland; <sup>17</sup>Department of Genetics, King Faisal Specialist Hospital and Research Center, Riyadh 12713, Saudi Arabia; <sup>18</sup>Wellcome Trust Centre for Human Genetics, NIHR Comprehensive Biomedical Research Centre, Oxford OX3 7BN, UK; <sup>19</sup>Colon Cancer Genetics Group, MRC Human Genetics Unit, The University of Edinburgh, Western General Hospital, Edinburgh EH4 2XU, UK; <sup>20</sup>The Roslin Institute, University of Edinburgh, Easter Bush, Roslin, Edinburgh EH25 9RG, UK; <sup>21</sup>Centre for Population Health Sciences, University of Edinburgh, Edinburgh EH8 9AG, UK; <sup>22</sup>Institute of Cancer and Genetics, School of Medicine, Cardiff University, Cardiff CF14 4XN, UK; <sup>23</sup>CRUK/MRC Oxford Institute for Radiation Oncology, University of Oxford, Oxford OX3 7DQ, UK; <sup>24</sup>MRC Clinical Trials Unit, Aviation House, London WC2B 6NH, UK; <sup>25</sup>Department of Oncology, Oxford Cancer Centre, University of Oxford, Churchill Hospital, Oxford OX3 7LE, UK; <sup>26</sup>Nuffield Department of Clinical Laboratory Sciences, University of Oxford, John Radcliffe Hospital, Oxford OX3 9DU, UK; <sup>27</sup>Department of Pathology, Colorectal Oncogenomics Group, Genetic Epidemiology Laboratory, The University of Melbourne, Melbourne, VIC 3010, Australia; <sup>28</sup>Centre for Epidemiology and Biostatistics, The University of Melbourne, Melbourne, VIC 3010, Australia; <sup>29</sup>Department of Health Sciences Research, Mayo Clinic, Scottsdale, AZ 85259, USA; <sup>30</sup>Cancer Prevention Program, Fred Hutchinson Cancer Research Center, Seattle, WA 98109, USA; <sup>31</sup>Lunenfeld-Tanenbaum Research Institute, Mount Sinai Hospital, Toronto, ON M5G 1X5, Canada; <sup>32</sup>Department of Preventive Medicine, University of Southern California, Los Angeles, CA 90033, USA and <sup>33</sup>Department of Biosciences and Nutrition, SciLife Center, Karolinska Institutet, Solna SE 141 83, Sweden

Supplementary Information accompanies this paper on British Journal of Cancer website (<http://www.nature.com/bjc>)