

<https://helda.helsinki.fi>

Erratum to: Home-range use patterns and movements of the
Siberian flying squirrel in urban forests : effects of habitat
composition and connectivity

Makelainen, Sanna

2016-04-14

Makelainen , S , de Knegt , H J , Ovaskainen , O & Hanski , I K 2016 , ' Erratum to:
Home-range use patterns and movements of the Siberian flying squirrel in urban forests :
effects of habitat composition and connectivity ' , Movement Ecology , vol. 4 , 13 . <https://doi.org/10.1186/s40462-016-0076-7>

<http://hdl.handle.net/10138/233182>

<https://doi.org/10.1186/s40462-016-0076-7>

cc_by

draft

Downloaded from Helda, University of Helsinki institutional repository.

This is an electronic reprint of the original article.

This reprint may differ from the original in pagination and typographic detail.

Please cite the original version.

ERRATUM

Open Access



Erratum to: Home-range use patterns and movements of the Siberian flying squirrel in urban forests: effects of habitat composition and connectivity

Sanna Mäkeläinen^{1*}, Henrik J. de Knecht^{2,3}, Otso Ovaskainen² and Ilpo K. Hanski¹

After publication of this study [1], we noticed that Fig. 1 was not correctly processed during copyediting. The original version of this article was corrected. The publisher apologizes for any inconvenience caused. Please see the corrected Fig. 1 below:

Author details

¹Finnish Museum of Natural History LUOMUS, University of Helsinki, P. O. Box 17 (P. Rautatiekatu 13), Helsinki FI-00014, Finland. ²Department of Biosciences, University of Helsinki, P. O. Box 65 (Viikinkaari 1), Helsinki FI-00014, Finland. ³Current address: Resource Ecology Group, Wageningen University, Droevendaalsesteeg 3a, Wageningen 6708 PB, The Netherlands.

Received: 10 March 2016 Accepted: 30 March 2016

Published online: 14 April 2016

Reference

1. Mäkeläinen S, de Knecht HJ, Ovaskainen O, Hanski IK. Home-range use patterns and movements of the Siberian flying squirrel in urban forests: Effects of habitat composition and connectivity. *Mov Ecol.* 2016;4:5.

* Correspondence: sanna.makelainen@helsinki.fi

¹Finnish Museum of Natural History LUOMUS, University of Helsinki, P. O. Box 17 (P. Rautatiekatu 13), Helsinki FI-00014, Finland

Full list of author information is available at the end of the article

Submit your next manuscript to BioMed Central and we will help you at every step:

- We accept pre-submission inquiries
- Our selector tool helps you to find the most relevant journal
- We provide round the clock customer support
- Convenient online submission
- Thorough peer review
- Inclusion in PubMed and all major indexing services
- Maximum visibility for your research

Submit your manuscript at
www.biomedcentral.com/submit



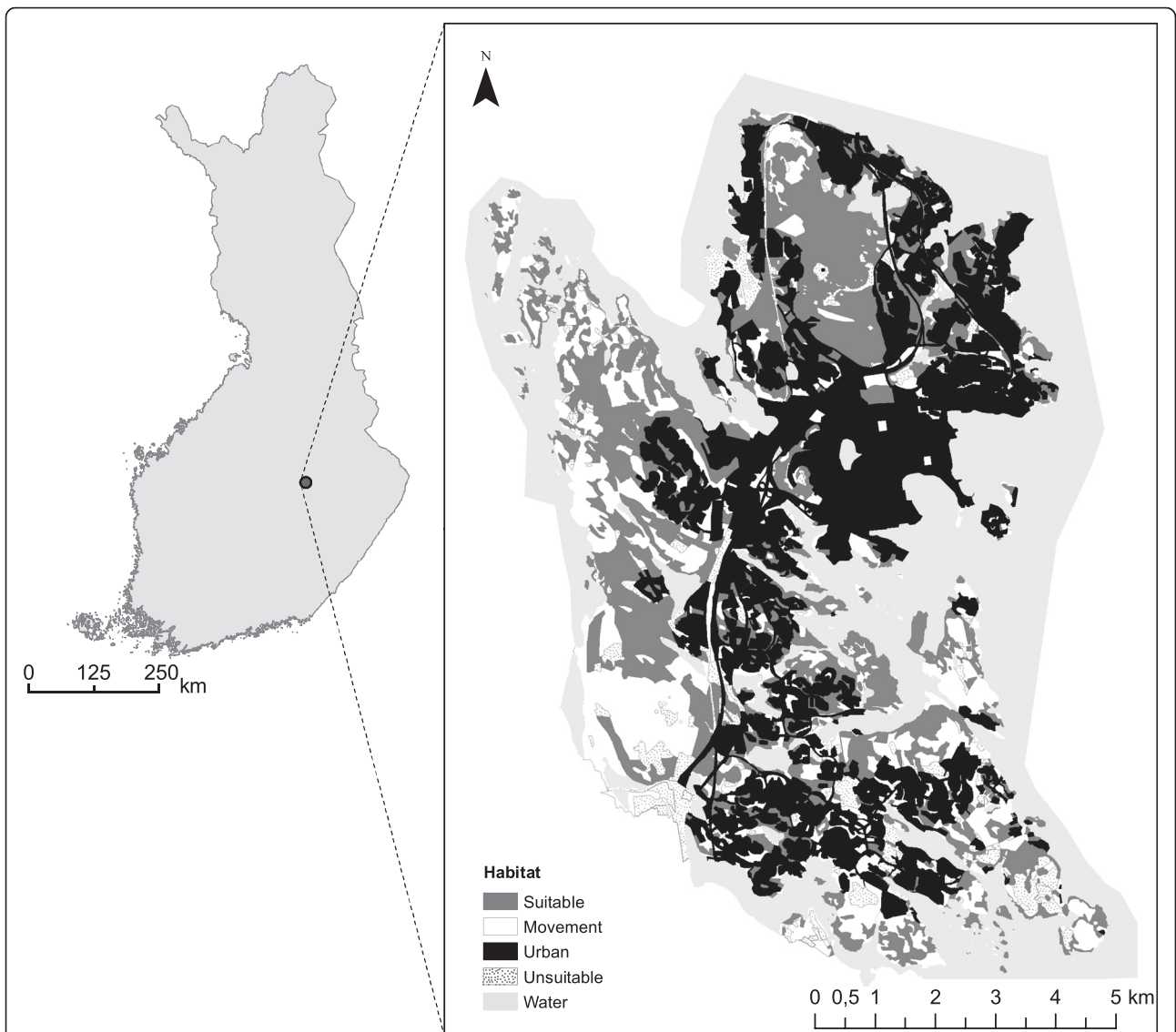


Fig. 1 Map and habitat classification of the study area in Kuopio, Eastern Finland. Habitats are classified by their suitability for the flying squirrel. Suitable habitat (H1) denotes mature spruce-dominated forests. Movement habitat (H2) consists of forests that are over 10 m in height. Urban habitat (H3) consist of residential areas, roads or other habitats dominated by human land use. Clear cut areas, fields and sapling stands are combined to unsuitable habitat (H4). Water bodies (H5) are not utilized by the species and may form barriers for movements