



Published in final edited form as:

Mol Psychiatry. 2018 April ; 23(4): 985–992. doi:10.1038/mp.2017.158.

Copy number elevation of 22q11.2 genes arrests the developmental maturation of working memory capacity and adult hippocampal neurogenesis

Shuken Boku, MD, PhD^{1,*}, Takeshi Izumi, MD, PhD^{1,2,*}, Seiji Abe, PhD^{1,*}, Tomohisa Takahashi, MD PhD¹, Akira Nishi, PhD¹, Hiroko Nomaru, PhD¹, Yasuhiko Naka, MD¹, Gina Kang, BS¹, Masako Nagashima¹, Akitoyo Hishimoto, MD, PhD¹, Shingo Enomoto¹, Gilberto Duran-Torres, PhD³, Kenji Tanigaki, MD, PhD⁴, Jinghang Zhang, MD⁵, Kenny Ye, PhD⁶, Shigeki Kato, PhD⁷, Pekka T. Männistö, MD, PhD³, Kazuto Kobayashi, PhD⁷, and Noboru Hiroi, PhD^{1,8,9,**}

¹Department of Psychiatry and Behavioral Sciences, Albert Einstein College of Medicine, Bronx, NY, 10461 USA ²Department of Neuropharmacology, Hokkaido University Graduate School of Medicine, Sapporo, 060-8638, Japan ³Division of Pharmacology and Toxicology, Faculty of Pharmacy, University of Helsinki, Helsinki FIN-00014, Finland ⁴Research Institute, Shiga Medical Center, Moriyama-shi, Shiga, Japan ⁵Department of Microbiology and Immunology, Albert Einstein College of Medicine, Bronx, NY, 10461 USA ⁶Department of Epidemiology & Population Health, Albert Einstein College of Medicine, Bronx, NY, 10461 USA ⁷Department of Molecular Genetics, Institute of Biomedical Sciences, Fukushima Medical University School of Medicine, Fukushima, 960-1295, Japan ⁸Dominick P. Purpura Department of Neuroscience, Albert Einstein College of Medicine, Bronx, NY, 10461 USA ⁹Department of Genetics, Albert Einstein College of Medicine, Bronx, NY, 10461 USA

Abstract

Working memory capacity, a critical component of executive function, expands developmentally from childhood through adulthood. Anomalies in this developmental process are seen in individuals with autism spectrum disorder (ASD), schizophrenia and intellectual disabilities (ID), implicating this atypical process in the trajectory of developmental neuropsychiatric disorders.

Users may view, print, copy, and download text and data-mine the content in such documents, for the purposes of academic research, subject always to the full Conditions of use: http://www.nature.com/authors/editorial_policies/license.html#terms

**Correspondence should be addressed to NH (noboru.hiroi@einstein.yu.edu), Department of Psychiatry and Behavioral Sciences, Dominick P. Purpura Department of Neuroscience, Department of Genetics, Albert Einstein College of Medicine, Golding 104, 1300 Morris Park Avenue, Bronx, New York 10461. 718-430-3124 (tel), 718-430-3125 (fax), noboru.hiroi@einstein.yu.edu.

*These authors contributed equally to the work.

Supplementary information is available online

Author Contributions:

The first three authors (SB, TI and SA) contributed equally to this work. SB, TI, SA, YN, HN, AN, TT, GK, AH, MN, SE and NH contributed to the overall design and execution of experiments and analyses. SB, TI, YN and NH wrote the manuscript. GD-T and PM conducted Comt enzyme assays. GK, TI, TT conducted behavioral analyses. YN and KT carried out proliferation and apoptosis analyses *in vitro*. SA, HN, YN, JZ and NH conducted FACS. SK and KK provided the template plasmid of viral vectors and SB designed viral vectors. SB, TI, SA, AN, TT, AH, SE and MN carried out histochemical analyses.

Conflict of Interest.

We declare that there is no competing financial interest regarding this paper by authors.

However, the cellular and neuronal substrates underlying this process are not understood. Duplication and triplication of copy number variants (CNVs) of 22q11.2 are consistently and robustly associated with cognitive deficits of ASD and ID in humans, and overexpression of small 22q11.2 segments recapitulates dimensional aspects of developmental neuropsychiatric disorders in mice. We capitalized on these two lines of evidence to delve into the cellular substrates for this atypical development of working memory. Using a region- and cell-type-selective gene expression approach, we demonstrated that copy number elevations of catechol-O-methyl-transferase (*COMT*) or *Tbx1*, two genes encoded in the two small 22q11.2 segments, in adult neural stem/progenitor cells in the hippocampus prevents the developmental maturation of working memory capacity in mice. Moreover, copy number elevations of *COMT* or *Tbx1* reduced the proliferation of adult neural stem/progenitor cells in a cell-autonomous manner *in vitro* and migration of their progenies in the hippocampus granular layer *in vivo*. Our data provide evidence for the novel hypothesis that copy number elevations of these 22q11.2 genes alter the developmental trajectory of working memory capacity via suboptimal adult neurogenesis in the hippocampus.

One of the fundamental questions in developmental neurobiology centers on the development of various cognitive functions and how such development derails in mental disorders. The capacity of many cognitive functions develops from childhood to adulthood(1–3). Both cognition and working memory start to deteriorate at adolescence and predicts the onset of later schizophrenia(4–10). The developmental maturation of working memory starts to lag during a period from adolescence to adulthood in individuals with ASD(11, 12). Working memory correlates to IQ(13–15) and is less developed, throughout development and in adulthood, in individuals with intellectual disabilities (ID)(16–19).

Duplication, triplication and hemizygous deletion of a few hundred kb to a few Mb, collectively termed copy number variants (CNVs), confer the most robust risk factors, to date, for developmental delays in cognitive function and developmental neuropsychiatric disorders(20–22). Carriers of a 1.5Mb to 3Mb duplication or triplication at human chromosome 22q11.2 exhibit high rates of developmental delays in cognitive capacities(23–25) and ASD and ID(26). Duplication of this chromosomal locus is also enriched in individuals with ASD and ID(20–22). However, the precise genetic elements within 22q11.2 responsible for atypical cognitive development remain elusive due to their large duplication sizes in humans.

Using mouse models with constitutive overexpression of small 22q11.2 segments(27, 28), we showed that an arrest in developmental maturation of working memory capacity is recapitulated by copy number elevation of a 190kb region, including human *COMT*, *TXNRD2* and *ARVCF*(29). Moreover, constitutive copy number elevation of another 200kb 22q11.2 segment, containing human *SEPT5*, *GP1BB*, *TBX1* and *GNB1L*, resulted in impaired social behaviors and compulsively repetitive behaviors, the latter of which were attenuated by an antipsychotic drug, suggesting relevance of this chromosomal segment to developmental neuropsychiatric disorders(30).

Among these 22q11.2-encoded genes, a high activity single nucleotide polymorphism (SNP) of *COMT* is associated with poor working memory after, but not before, 10 years of age, compared with a low activity *COMT* allele in humans (31). Moreover, a gain-of-function

mutation of *TBX1* has been identified in individuals with developmental delays in cognition (32, 33). Over-expression of no other 22q11.2 genes has been shown to impair working memory. However, mutation carriers also have other CNVs and mutations (20, 34) and the impacts of SNPs are often inconsistent, presumably due to their weak effect sizes (35) in humans. While *Comt* and *Tbx1* contribute to working memory and other ASD-related behavioral phenotypes in mice (36–38), the precise neuronal and cellular mechanisms through which elevated levels of these genes contribute to developmental working memory maturation are not known in humans or mice.

The targeted cell type and developmental time points are justified for four reasons. First, excitotoxic lesions of the hippocampal dentate gyrus damage adult neural stem/progenitor cells as well as mature neurons, and impair working memory in mice (Supplementary Results 1 and Supplementary Fig. 1a–c). Second, adult neural stem/progenitor cells have been functionally implicated in working memory in mice (39–41). Third, adult neural stem/progenitor cells in the hippocampus express both *Tbx1* (36) and *COMT* (Supplementary Results 2 and Supplementary Fig. 2) in mice. As there is no reliable means to evaluate the proliferation and migration of adult neural progenitor cells in the brains of human carriers of 22q11.2 copy number elevation, we examined the mechanisms through which high gene doses of the two 22q11.2 genes *COMT* and *Tbx1* affect adult neurogenesis in mouse and cell models. Fourth, constitutive overexpression of a 190kb 22q11.2 segment, including *COMT*, attenuates working memory capacity at 2 months, but not at 1 month of age (29); these mouse ages correspond to adulthood and periadolescence, respectively (42). A similar phenomenon was observed from childhood to adulthood in humans who carry a high activity *COMT* allele (31).

Our data show that copy number elevations of the two 22q11.2 genes, *COMT* and *Tbx1*, in adult neural stem/progenitor cells of the hippocampus arrest the developmental maturation of working memory capacity and adult neurogenesis.

Materials and Methods

We used male C57BL/6J mice. We constructed lentiviral vectors carrying enhanced green fluorescence protein (*EGFP*), *COMT-EGFP* or *Tbx1-EGFP*, all under a murine stem cell virus promoter (*MSCV*), pseudotyped with vesicular stomatitis virus (VSV-G). These vectors achieved a high degree of selectivity to infect adult neural stem/progenitor cells (Supplementary Results 3 and Supplementary Figs. 3 and 4). The vectors were bilaterally infused into the dorsal hippocampus and mice were evaluated 7–10 days later at 1 month or 2 months of age, in tasks designed to assess working memory, response to novelty, anxiety-like behaviors and motor behavior (29). Cell types infected by the vectors were identified using flow cytometry and double fluorescence immunohistochemistry. The position of transduced cells was histochemically determined after completion of all behavioral tests. We examined the cell-autonomous effects of *COMT* or *Tbx1* overexpression on proliferation and apoptosis of adult neural stem/progenitor cells of the hippocampus in cell culture (see Supplementary Information, Methods).

Results

Copy number elevation of *COMT* and *Tbx1* blunts the developmental expansion of working memory capacity

To examine the functional impact of *COMT* overexpression in adult neural stem/progenitor cells on the developmental trajectory of working memory, we infused the *COMT* vector 7–10 days before 1 or 2 months of age, corresponding with before and after adolescence, respectively (42), and tested mice in a battery of behavioral assays (Fig. 1a).

Copy number elevation of *COMT* reduced working memory accuracy at 2 months of age, but not at age 1 month (Fig 1b). EGFP-infused mice showed 7, 10 and 13% higher rates of working memory at 0, 15 and 30 sec delays, respectively, at age 2 months compared to 1 month (Fig. 1b inset), thereby recapitulating the developmental maturation of working memory capacity during this period in mice. In contrast, *COMT*-infused mice showed only 5 and 1 % points higher and 13% points lower rates at 0, 15 and 30 sec delays, respectively, during the same developmental time span (Fig. 1b inset); working memory with a heavy load was more severely affected. *COMT* copy number elevation reduced time spent in the open arms of the elevated plus maze (Fig. 1d) and increased time spent in the margin area of the open field (Fig. 1e), indicative of heightened anxiety, at age 2 months, but not 1 month. In contrast, *COMT* copy number elevation had no effect on the exploration of a novel object (Fig. 1c) or motor activity in an inescapable open field (Fig. 1f).

We next tested the effects of copy number elevation of *Tbx1* in adult neural stem/progenitor cells on working memory capacity at 1 and 2 months of age. Such treatment reduced working memory with a long delay at 2 months but not 1 month of age (Fig. 2a), but had no detectable effect on responses to a novel object (Fig. 2b), anxiety-like behavior in the elevated plus maze (Fig. 2c), and thigmotaxis (Fig. 2d) or locomotor activity (Fig. 2e).

Copy number elevation of *COMT* and *Tbx1* arrests migration of adult neural stem/progenitor cells

We examined the distribution of transduced cells after completing behavioral testing, when some newly-generated progenies of transduced adult neural stem/progenitor cells are expected to migrate into the granular layer from the subgranular zone. The majority of transduced cell bodies were located in and near the subgranular zone of the granular layer; their dendrites and axons reached the molecular layer of the dentate gyrus outward and extended toward the hilus and CA3 inward, respectively (Fig. 3a, b, c and d, upper images), a pattern consistent with that of maturing, migrating cells derived from adult neural stem/progenitor cells.

The total number of cell counts is not suitable to evaluate the impact of *COMT* or *Tbx1* on proliferation, as the numbers are affected by the uncontrollable extent of infused viral vectors in the hippocampus. We thus used the proportion of cell numbers among the three zones for analysis. This index is independent of the extent of initial random infection. Even if proliferation is additionally affected, the proportion would not change if the same proportion of cells migrate to mid and outer zones. Thus, the ratio is a selective index for evaluation of the migration process. Transduced cells were distributed with a clear gradient

from the subgranular/inner third zone to the outer third zone (see Fig. 3a, b, c and d, lower images). *COMT*-transduced cells remained in the subgranular/inner third zone more so at age 2 months than 1 month (Fig. 3a and b, bar graphs).

We observed the general gradient from the subgranular/inner third zone to the outer third zone in *Tbx1*-transduced cells at both 1 and 2 months of age. However, *Tbx1*-transduced cells remained more in the subgranular/inner third zone than *EGFP*-transduced cells at 2 months of age (Fig. 3d, bar graphs), but we observed a more dispersed distribution of *Tbx1*-transduced cells than *EGFP*-transduced cells at 1 month of age (Fig. 3c, bar graphs).

These data are consistent with our hypothesis that the migration of progenies of adult neural stem/progenitor cells is reduced by copy number elevation of *COMT* and *Tbx1* in the hippocampal granular layer at 2 months of age, when these gene over-dosages impaired working memory.

Copy number elevation of *COMT* and *Tbx1* arrests proliferation of adult neural stem/progenitor cells

It is not possible to unequivocally evaluate how *COMT* and *Tbx1* overexpression in adult neural stem/progenitor cells alone affects the proliferation and apoptosis of transduced cells *in vivo*. To determine the cell-autonomous effects of gene overexpression on proliferation and apoptosis, we isolated adult neural stem/progenitor cells and transfected them with a plasmid containing either *EGFP*, *COMT-EGFP* or *Tbx1-EGFP* (Fig. 4a). *COMT* copy number elevation significantly blunted and *Tbx1* overexpression completely blocked the proliferation of adult neural stem/progenitor cells (Fig. 4b). The proportions of annexin+ cells were indistinguishable among the three groups (Fig. 4c), indicating that *COMT* and *Tbx1* overexpression reduced the proliferation of adult neural stem/progenitor cells in a cell-autonomous manner without altering apoptosis rate.

Discussion

Our data demonstrate that copy number elevations of the two 22q11.2 genes, *COMT* and *Tbx1*, in the hippocampal dentate gyrus reduced developmental maturation of working memory capacity and the proliferation – and migration of the progenies – of adult neural stem/progenitor cells. Whereas association between a *COMT* high activity allele and working memory deficits has been amply and elegantly demonstrated (43), our data show that overexpression of these two genes in adult neural stem/progenitor cells does not affect working memory *per se*, but the developmental expansion of its capacity from 1 to 2 months of age in mice.

COMT, but not *Tbx1*, over-expression in the adult, but not peri-adolescent, hippocampus exacerbated anxiety-related behaviors. This was a rather selective effect, as neither gene treatment altered novel response or motor activity. Ibotenic acid lesions severely impaired working memory, reduced response to a novel object and increased motor activity, but had no effect on anxiety-like behaviors (see Supplementary Fig. 1c–g). While all the treatments equally reduced working memory capacity, these variable effects of *COMT* and *Tbx1* overexpression and excitotoxic lesions on other behaviors indicate that working memory

deficits cannot be adequately accounted for by the indirect effects of these treatments on the other behaviors.

We previously demonstrated that transgenic mice constitutively overexpressing a 190 kb human chromosomal 22q11.2 segment, including *COMT*, *TNXRD2* and *ARVCF*, exhibited no maturation deficit of working memory in a no-delay version of spontaneous alternation at any age but showed deficits in working memory with delays in rewarded alternation at 2 months but not at 1 month(29). Another report showed that the developmental maturation of working memory capacity is blunted from adolescence to adulthood in individuals with a high activity allele of *COMT* in humans(31). Our current data expand these mouse and human studies in three ways. First, we identified *COMT* and *Tbx1* in hippocampal adult stem/neural progenitor cells as a functional contributor, although we do not rule out the possibility that mature neurons in the hippocampus and elsewhere are also involved. Second, working memory with delay, as measured by spontaneous alternation, was also affected by increased *COMT* dose. Third, working memory with delay is affected by *Tbx1* overexpression in the hippocampus at 2, but not 1, months of age.

Our data are unique in that specific contributory genes are identified but are consistent with studies that showed the detrimental impact of inhibition of adult stem/progenitor cells on working memory in rodents(39, 40). However, some aspects of our data are seemingly inconsistent with others. One study showed inhibition of adult neurogenesis did not impair working memory tasks where no delay is imposed in rats(44). However, in this study, rats did not show a robust delay-dependent performance reduction in the non-matching-to-place task in this study(44), raising the possibility that the task might not have been as sensitive to working memory load as our task. Our own data are consistent with this observation in that gene elevation of *COMT* and *Tbx1* did not affect working memory with no delay as severely as working memory with delay (Figs. 1a and 2a)(29). The interval between inhibition of adult neurogenesis and testing of working memory is another parameter that could account for diverse results. Our mice were tested 7–10 days after gene over-expression. Other studies similarly showed that while working memory is severely impaired at 1 and 3 weeks after irradiation of adult stem cells(40), performance is normal at 7 weeks(40) and 4–8 weeks(44) or enhanced at 2.5 to 3 months(41) after inhibition of adult neurogenesis. Such normal performance might reflect a recovery of adult stem/progenitor cells or compensatory processes(40). Moreover, as it takes approximately 2 months for adult stem/progenitor cells to differentiate into mature neurons, stem cells or their immediate progenies (e.g., immature neurons) might mediate the detrimental effect of gene overdose in or functional inhibition of adult stem/progenitor cells. Taken together, these seemingly inconsistent data collectively suggest that working memory with a heavy load is more severely affected by a functional inhibition or reduction of adult stem/progenitor cells and their immediate progenies (i.e., immature neurons) than of mature neurons derived from adult stem/progenitor cells.

Overexpression of the protein products of these 22q11.2 genes might non-specifically reduce the functional capacity of adult stem cells in our mouse models and in human carriers of duplication and triplication. However, this possibility does not explain why the same gene overexpression did not affect working memory at 1 month of age. Certain intrinsic properties of adult neural stem/progenitor cells might underlie the age-dependent effect. There is a

drastic decline in the neurogenesis rate in the hippocampal subgranular zone from age 1 month to 3 months in mice(45, 46) and from infancy to adulthood in humans(47–49). Given that *COMT* and *Tbx1* overexpressing cells tended to remain at the inner third of the granular layer more so at age 2 months than 1 month, the endogenously diminished proliferation and migration at age 2 months might make it increasingly difficult for stem cells to overcome the detrimental effects of increased gene dose.

Not incompatible with this possibility, an additional potential mechanism is a developmental change in the properties of COMT and its substrates. Developmental maturation of working memory capacity from age 1 to 2 months occurred when endogenous COMT enhanced its capacity to methylate substrates in the hippocampus, presumably reflecting a higher activity ratio of membrane bound (MB)-COMT to soluble (S)-COMT at age 2 months, compared to 1 month (Supplementary Results 4; Supplementary Fig 5 and Supplementary Table 1). Catecholamine depletion reduces the proliferation rate of adult neural stem/progenitor cells in the rodent subgranular zone under certain conditions(50, 51). As COMT also methylates any protein that contains catechol, catecholamines and other catechol-carrying molecules could serve as functional substrates for this age-dependent effect of COMT.

There might even be a distinct mechanism through which *Tbx1* over-expression did not impair working memory at 1 month of age. Our data suggest that *Tbx1* overexpressed at 1 month facilitated migration, compared to EGFP; *Tbx1* overexpression at 2 months induced the opposite pattern. It could be that newly generated cells at 1 month might have compensated for the impact of *Tbx1* by facilitating migration of transduced cells due to their more active proliferation capacity, thus less detrimental effect on working memory.

One unique property of our study is that we evaluated the impact of gene overexpression on working memory and other behaviors following a 7–10 day recovery period after surgical gene transduction. Some newly-dividing cells can start to differentiate into neuroblasts within a few days and into neurons after a few weeks in the adult mouse brain, although it takes more than one week for differentiation into astrocytes(46). However, this time period is not sufficient for the majority of nascent neurons to mature to extend their axons to target neurons in the hilus and CA3(52) and their dendrites to express spines(53). Thus, the impact of cells newly generated from transduced stem cells during adulthood would be expected to remain relatively localized under our experimental protocol. As immature and maturing neurons bear a slow excitatory response to GABA inputs, COMT and *Tbx1* overexpression might impair working memory by such local effects within the granular layer. A future challenge is to identify a novel substrate through which CNVs impact working memory by altering local electrophysiologic properties of newly-generated immature neurons at the time when mice exhibit blunted working memory capacity.

Molecules and their associated cascades in neonatal and adult neural stem/progenitor cells can be further exploited to better understand the developmental trajectories of cognitive and affective anomalies associated with ASD, ID and schizophrenia(37, 54). The ultimate validation of our observations in mouse and cell models will be achieved only when it is shown that potential therapies developed from such hypothetical mechanisms provide beneficial effects on the atypical developmental maturation of working memory in humans.

Supplementary Material

Refer to Web version on PubMed Central for supplementary material.

Acknowledgments

We thank Dr. Arthur Nienhuis of St. Jude Children's Research Hospital for providing us with pCL20c-*MSCV-EGFP* plasmid. Research reported in this publication was supported by the National Institute of Mental Health of the National Institutes of Health under Award Number R01MH099660 (NH), the Eunice Kennedy Shriver National Institute of Child Health and Human Development of the National Institutes of Health under Award Number R21HD053114 and U54HD090260 (NH), National Cancer Institute of the National Institutes of Health under Award Number P30CA013330 (JZ), a NARSAD Independent Investigator Award and a Maltz Foundation award (NH), the Uehara Memorial Foundation and Senshin Medical Research Foundation (SB) and Senshin Medical Research Foundation (HN). The content is solely the responsibility of the authors and does not necessarily represent the official views of the National Institutes of Health. We thank Dr. Takeshi Hiramoto for his critical comments on an early version of the manuscript, and Drs. J. Roy-Chowdhury and Xia Wang of the Gene Therapy Core, Albert Einstein College of Medicine for preparation of high titer viral particles.

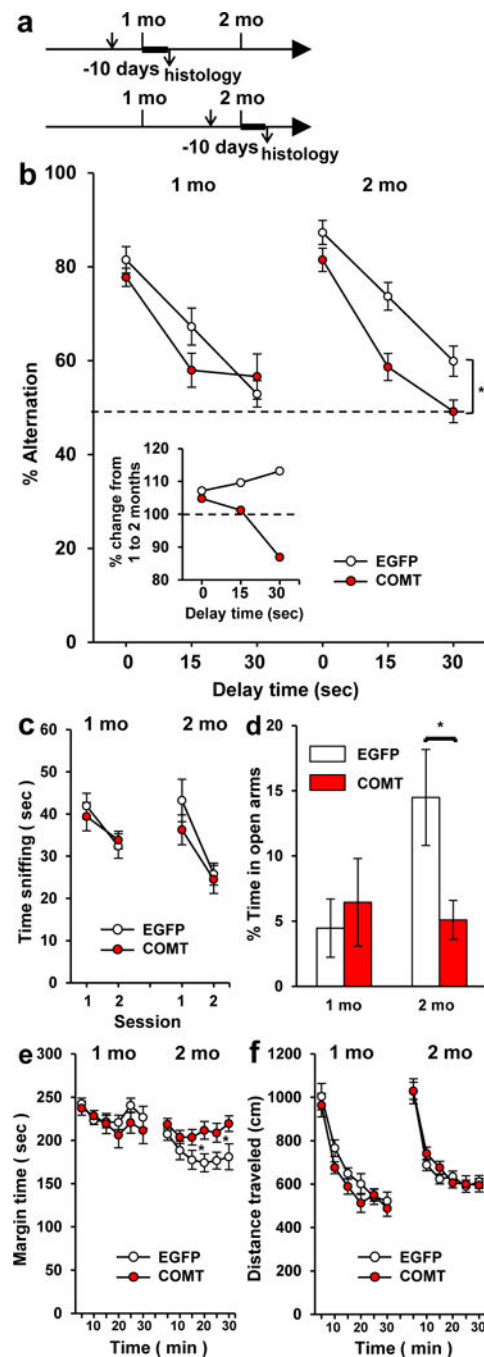
References

1. Gathercole SE, Pickering SJ, Ambridge B, Wearing H. The structure of working memory from 4 to 15 years of age. *Dev Psychol.* 2004; 40(2):177–90. [PubMed: 14979759]
2. Gur RC, Richard J, Calkins ME, Chiavacci R, Hansen JA, Bilker WB, et al. Age group and sex differences in performance on a computerized neurocognitive battery in children age 8-21. *Neuropsychology.* 2012; 26(2):251–65. [PubMed: 22251308]
3. Luna B, Garver KE, Urban TA, Lazar NA, Sweeney JA. Maturation of cognitive processes from late childhood to adulthood. *Child Dev.* 2004; 75(5):1357–72. [PubMed: 15369519]
4. Woodberry KA, Giuliano AJ, Seidman LJ. Premorbid IQ in schizophrenia: a meta-analytic review. *Am J Psychiatry.* 2008; 165(5):579–87. [PubMed: 18413704]
5. David AS, Malmberg A, Brandt L, Allebeck P, Lewis G. IQ and risk for schizophrenia: a population-based cohort study. *Psychol Med.* 1997; 27(6):1311–23. [PubMed: 9403903]
6. Davidson M, Reichenberg A, Rabinowitz J, Weiser M, Kaplan Z, Mark M. Behavioral and intellectual markers for schizophrenia in apparently healthy male adolescents. *Am J Psychiatry.* 1999; 156(9):1328–35. [PubMed: 10484941]
7. Fuller R, Nopoulos P, Arndt S, O'Leary D, Ho BC, Andreasen NC. Longitudinal assessment of premorbid cognitive functioning in patients with schizophrenia through examination of standardized scholastic test performance. *Am J Psychiatry.* 2002; 159(7):1183–9. [PubMed: 12091197]
8. Reichenberg A, Caspi A, Harrington H, Houts R, Keefe RS, Murray RM, et al. Static and dynamic cognitive deficits in childhood preceding adult schizophrenia: a 30-year study. *Am J Psychiatry.* 2010; 167(2):160–9. [PubMed: 20048021]
9. Meier MH, Caspi A, Reichenberg A, Keefe RS, Fisher HL, Harrington H, et al. Neuropsychological decline in schizophrenia from the premorbid to the postonset period: evidence from a population-representative longitudinal study. *Am J Psychiatry.* 2014; 171(1):91–101. [PubMed: 24030246]
10. Bora E, Lin A, Wood SJ, Yung AR, McGorry PD, Pantelis C. Cognitive deficits in youth with familial and clinical high risk to psychosis: a systematic review and meta-analysis. *Acta Psychiatr Scand.* 2014; 130(1):1–15. [PubMed: 24611632]
11. Luna B, Doll SK, Hegedus SJ, Minshew NJ, Sweeney JA. Maturation of executive function in autism. *Biol Psychiatry.* 2007; 61(4):474–81. [PubMed: 16650833]
12. Rosenthal M, Wallace GL, Lawson R, Wills MC, Dixon E, Yerys BE, et al. Impairments in real-world executive function increase from childhood to adolescence in autism spectrum disorders. *Neuropsychology.* 2013; 27(1):13–8. [PubMed: 23356593]
13. Ackerman PL, Beier ME, Boyle MO. Working memory and intelligence: the same or different constructs? *Psychol Bull.* 2005; 131(1):30–60. [PubMed: 15631550]
14. Conway AR, Kane MJ, Engle RW. Working memory capacity and its relation to general intelligence. *Trends Cogn Sci.* 2003; 7(12):547–52. [PubMed: 14643371]

15. Friedman NP, Miyake A, Corley RP, Young SE, DeFries JC, Hewitt JK. Not all executive functions are related to intelligence. *Psychol Sci*. 2006; 17(2):172–9. [PubMed: 16466426]
16. Danielsson H, Henry L, Ronnberg J, Nilsson LG. Executive functions in individuals with intellectual disability. *Res Dev Disabil*. 2010; 31(6):1299–304. [PubMed: 20728303]
17. Danielsson H, Henry L, Messer D, Ronnberg J. Strengths and weaknesses in executive functioning in children with intellectual disability. *Res Dev Disabil*. 2012; 33(2):600–7. [PubMed: 22155533]
18. Schuchardt K, Gebhardt M, Maehler C. Working memory functions in children with different degrees of intellectual disability. *J Intellect Disabil Res*. 2010; 54(4):346–53. [PubMed: 20433572]
19. Van der Molen MJ, Van Luit JE, Jongmans MJ, Van der Molen MW. Memory profiles in children with mild intellectual disabilities: strengths and weaknesses. *Res Dev Disabil*. 2009; 30(6):1237–47. [PubMed: 19477617]
20. Girirajan S, Eichler EE. Phenotypic variability and genetic susceptibility to genomic disorders. *Hum Mol Genet*. 2010; 19(R2):R176–R87. [PubMed: 20807775]
21. Kirov G, Rees E, Walters JT, Escott-Price V, Georgieva L, Richards AL, et al. The Penetrance of Copy Number Variations for Schizophrenia and Developmental Delay. *Biol Psychiatry*. 2013; 75(5):378–85. [PubMed: 23992924]
22. Malhotra D, Sebat J. CNVs: harbingers of a rare variant revolution in psychiatric genetics. *Cell*. 2012; 148(6):1223–41. [PubMed: 22424231]
23. Wentzel C, Fernstrom M, Ohrner Y, Anneren G, Thuesson AC. Clinical variability of the 22q11.2 duplication syndrome. *Eur J Med Genet*. 2008; 51(6):501–10. [PubMed: 18707033]
24. Yobb TM, Somerville MJ, Willatt L, Firth HV, Harrison K, MacKenzie J, et al. Microduplication and triplication of 22q11.2: a highly variable syndrome. *American Journal of Human Genetics*. 2005; 76(5):865–76. [PubMed: 15800846]
25. Vaz SO, Pires R, Pires LM, Carreira IM, Anjos R, Maciel P, et al. A unique phenotype in a patient with a rare triplication of the 22q11.2 region and new clinical insights of the 22q11.2 microduplication syndrome: a report of two cases. *BMC Pediatr*. 2015; 15(1):95. [PubMed: 26297018]
26. Wenger TL, Miller JS, DePolo LM, de Marchena AB, Clements CC, Emanuel BS, et al. 22q11.2 duplication syndrome: elevated rate of autism spectrum disorder and need for medical screening. *Mol Autism*. 2016; 7:27. [PubMed: 27158440]
27. Hiroi, N., Nishi, A. Dimensional deconstruction and reconstruction of CNV-associated neuropsychiatric disorders. In: Pletnikov, MV., Waddington, JL., editors. *Modeling the Psychopathological Dimensions of Schizophrenia: From Molecules to Behavior*. Vol. 23. London, UK: 2015. p. 285-302. *Handbook of Behavioral Neuroscience*
28. Hiroi N, Takahashi T, Hishimoto A, Izumi T, Boku S, Hiramoto T. Copy Number Variation at 22q11.2: from rare variants to common mechanisms of developmental neuropsychiatric disorders. *Mol Psychiatry*. 2013; 18:1153–65. [PubMed: 23917946]
29. Suzuki G, Harper KM, Hiramoto T, Funke B, Lee M, Kang G, et al. Over-expression of a human chromosome 22q11.2 segment including TXNRD2, COMT, and ARVCF developmentally affects incentive learning and working memory in mice. *Hum Mol Genet*. 2009; 18(20):3914–25. [PubMed: 19617637]
30. Hiroi N, Zhu H, Lee M, Funke B, Arai M, Itokawa M, et al. A 200-kb region of human chromosome 22q11.2 confers antipsychotic-responsive behavioral abnormalities in mice. *Proc Natl Acad Sci U S A*. 2005; 102(52):19132–7. [PubMed: 16365290]
31. Dumontheil I, Roggeman C, Ziermans T, Peyrard-Janvid M, Matsson H, Kere J, et al. Influence of the COMT genotype on working memory and brain activity changes during development. *Biol Psychiatry*. 2011; 70(3):222–9. [PubMed: 21514925]
32. Torres-Juan L, Rosell J, Morla M, Vidal-Pou C, Garcia-Algas F, de la Fuente MA, et al. Mutations in TBX1 genocopy the 22q11.2 deletion and duplication syndromes: a new susceptibility factor for mental retardation. *Eur J Hum Genet*. 2007; 15(6):658–63. [PubMed: 17377518]
33. Zweier C, Sticht H, ydin-Yaylagul I, Campbell CE, Rauch A. Human TBX1 missense mutations cause gain of function resulting in the same phenotype as 22q11.2 deletions. *Am J Hum Genet*. 2007; 80(3):510–7. [PubMed: 17273972]

34. Ogata T, Niihori T, Tanaka N, Kawai M, Nagashima T, Funayama R, et al. TBX1 mutation identified by exome sequencing in a Japanese family with 22q11.2 deletion syndrome-like craniofacial features and hypocalcemia. *PLoS One*. 2014; 9(3):e91598. [PubMed: 24637876]
35. Barnett JH, Scoriels L, Munafo MR. Meta-analysis of the cognitive effects of the catechol-O-methyltransferase gene Val158/108Met polymorphism. *Biol Psychiatry*. 2008; 64(2):137–44. [PubMed: 18339359]
36. Hiramoto T, Kang G, Suzuki G, Satoh Y, Kucherlapati R, Watanabe Y, et al. Tbx1: identification of a 22q11.2 gene as a risk factor for autism spectrum disorder in a mouse model. *Hum Mol Genet*. 2011; 20(24):4775–85. [PubMed: 21908517]
37. Takahashi T, Okabe S, O'Broin P, Nishi A, Ye K, Beckert M, et al. Structure and function of neonatal social communication in a genetic mouse model of autism. *Mol Psychiatry*. 2016; 21(9):1208–14. [PubMed: 26666205]
38. Papaleo F, Crawley JN, Song J, Lipska BK, Pickel J, Weinberger DR, et al. Genetic dissection of the role of catechol-O-methyltransferase in cognition and stress reactivity in mice. *J Neurosci*. 2008; 28(35):8709–23. [PubMed: 18753372]
39. Iwata Y, Suzuki K, Wakuda T, Seki N, Thanseem I, Matsuzaki H, et al. Irradiation in adulthood as a new model of schizophrenia. *PLoS One*. 2008; 3(5):e2283. [PubMed: 18509473]
40. Madsen TM, Kristjansen PE, Bolwig TG, Wortwein G. Arrested neuronal proliferation and impaired hippocampal function following fractionated brain irradiation in the adult rat. *Neuroscience*. 2003; 119(3):635–42. [PubMed: 12809684]
41. Saxe MD, Malleret G, Vronskaia S, Mendez I, Garcia AD, Sofroniew MV, et al. Paradoxical influence of hippocampal neurogenesis on working memory. *Proc Natl Acad Sci U S A*. 2007; 104(11):4642–6. [PubMed: 17360577]
42. Bronson, FH., Dagg, CP., Snell, GD. Reproduction. In: Green, EL., editor. *Biology of the Laboratory Mouse*. Second. New York: Dover Publications, Inc; 2007. p. Online publication
43. Tunbridge EM, Harrison PJ, Weinberger DR. Catechol-o-methyltransferase, cognition, and psychosis: Val158Met and beyond. *Biol Psychiatry*. 2006; 60(2):141–51. [PubMed: 16476412]
44. Hernandez-Rabaza V, Llorens-Martin M, Velazquez-Sanchez C, Ferragud A, Arcusa A, Gumus HG, et al. Inhibition of adult hippocampal neurogenesis disrupts contextual learning but spares spatial working memory, long-term conditional rule retention and spatial reversal. *Neuroscience*. 2009; 159(1):59–68. [PubMed: 19138728]
45. He J, Crews FT. Neurogenesis decreases during brain maturation from adolescence to adulthood. *Pharmacol Biochem Behav*. 2007; 86(2):327–33. [PubMed: 17169417]
46. Encinas JM, Michurina TV, Peunova N, Park JH, Tordo J, Peterson DA, et al. Division-coupled astrocytic differentiation and age-related depletion of neural stem cells in the adult hippocampus. *Cell Stem Cell*. 2011; 8(5):566–79. [PubMed: 21549330]
47. Spalding KL, Bergmann O, Alkass K, Bernard S, Salehpour M, Huttner HB, et al. Dynamics of hippocampal neurogenesis in adult humans. *Cell*. 2013; 153(6):1219–27. [PubMed: 23746839]
48. Knott R, Singec I, Ditter M, Pantazis G, Capetian P, Meyer RP, et al. Murine features of neurogenesis in the human hippocampus across the lifespan from 0 to 100 years. *PLoS One*. 2010; 5(1):e8809. [PubMed: 20126454]
49. Dennis CV, Suh LS, Rodriguez ML, Kril JJ, Sutherland GT. Human adult neurogenesis across the ages: An immunohistochemical study. *Neuropathol Appl Neurobiol*. 2016; doi: 10.1111/nan.12337
50. Kulkarni VA, Jha S, Vaidya VA. Depletion of norepinephrine decreases the proliferation, but does not influence the survival and differentiation, of granule cell progenitors in the adult rat hippocampus. *Eur J Neurosci*. 2002; 16(10):2008–12. [PubMed: 12453065]
51. Hoglinger GU, Rizk P, Muriel MP, Duyckaerts C, Oertel WH, Caille I, et al. Dopamine depletion impairs precursor cell proliferation in Parkinson disease. *Nat Neurosci*. 2004; 7(7):726–35. [PubMed: 15195095]
52. Toni N, Laplagne DA, Zhao C, Lombardi G, Ribak CE, Gage FH, et al. Neurons born in the adult dentate gyrus form functional synapses with target cells. *Nat Neurosci*. 2008; 11(8):901–7. [PubMed: 18622400]

53. Zhao C, Teng EM, Summers RG Jr, Ming GL, Gage FH. Distinct morphological stages of dentate granule neuron maturation in the adult mouse hippocampus. *J Neurosci.* 2006; 26(1):3–11. [PubMed: 16399667]
54. Boku S, Toda H, Nakagawa S, Kato A, Inoue T, Koyama T, et al. Neonatal maternal separation alters the capacity of adult neural precursor cells to differentiate into neurons via methylation of retinoic acid receptor gene promoter. *Biological Psychiatry.* 2014; 77(4):333–44.

**Fig. 1.**

a. Experimental procedure. Upper and lower arrows indicate the time of surgical viral infusion and animal sacrifice for histological analysis, respectively. Thick horizontal lines indicate the time of behavioral assays. **b.** Percentage of alternations (means \pm standard error of the mean (SEM)), an index of working memory, in a T-maze (Age \times Treatment, $F(1,55)=5.45$, $p=0.0232$; Treatment \times Delay, $F(2,110)=3.64$, $p=0.0294$). EGFP-infused mice performed better at 2 months than at 1 month of age (Age, $F(1,24)=6.20$, $p=0.0201$), but not *COMT*-infused mice (Age, $F(1,31)=0.126$, $p=0.7245$). *COMT* overexpression impaired

performance at all delays at 2 months (Treatment, $F(1,33)=15.32$, $p=0.0004$; Treatment \times Delay, $F(2,66)=1.64$, $p=0.2019$; see ** at bracket), but not 1 month of age (Treatment, $F(1,22)=1.38$, $p=0.2525$). The dashed line indicates 50% (i.e., chance level). Inset: % change ($\% = (2 \text{ month}/1 \text{ month}) \times 100$). The dashed line indicates no change from age 1 to 2 months. **c.** Time spent (means \pm SEM) in novel object approach. *COMT* overexpression had no effect on performance (Treatment, $F(1,45)=0.88$, $p=0.3537$). **d.** Percentage of time (means \pm SEM) spent in the open arms of the elevated plus maze. *COMT* overexpression obliterated increase in time from age 1 to 2 months spent in the open arms, indicative of a reduction in anxiety-like behavior (Age \times Treatment, $F(1,43)=4.11$, $p=0.049$). * indicates a significant (5%) difference between EGFP and *COMT* groups of 2-month old mice, as determined by Newman-Keuls post-hoc comparison. **e.** Thigmotaxis, as time (means \pm SEM) spent in the margin area of an inescapable open field. Control mice spent less time in the margin (i.e., a reduction in anxiety-like behavior) at age 2 months, compared to 1 month, but *COMT*-expressing mice did not (Age \times Treatment, $F(1,55)=9.55$, $p=0.0031$). * indicates significantly (5%) different time points between EGFP and *COMT* groups of 2-month old mice, as determined by Newman-Keuls post-hoc comparison. **f.** Motor activity, as determined by horizontal distance traveled (means \pm SEM), is not altered by *COMT* overexpression (Treatment, $F(1,55)=0.83$, $p=0.3653$). 1 month: EGFP, $n=12$; *COMT*-EGFP, $n=12$. 2 months: EGFP, $n=14$; *COMT*-EGFP, $n=21$. *, $p<0.05$; **, $p<0.01$.

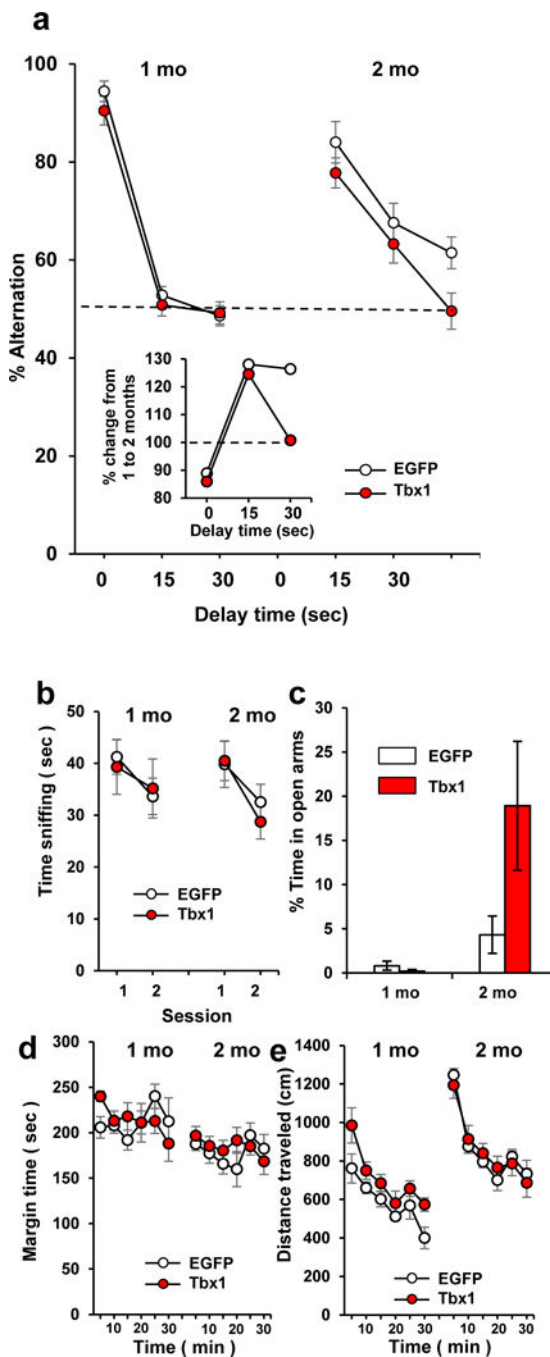


Fig. 2. Effects of *Tbx1* overexpression on behaviors at age 1 and 2 months. **a.** Percentage of alternations (means \pm SEM) in a T-maze. *Tbx1* overexpression decreased working memory (Treatment, $F(1,36)=5.80$, $p=0.021$). Interaction of Age \times Delay was significant ($F(2,72)=11.99$, $p<0.0001$), and exploratory ANOVA applied within each age indicated Treatment was significant at 2 months ($F(1,23)=6.967$, $p=0.015$; Treatment \times Delay, $F(2,46)=0.531$, $p=0.592$), but not at 1 month ($F(1,13)=1.68$, $p=0.218$). Inset: % change ($\%=(2\text{ month}/1\text{ month}) \times 100$). **b.** Novel object approach (means \pm SEM). *Tbx1* overexpression

had no effect (Treatment, $F(1,36)=0.055$, $p=0.817$). **c.** Elevated plus maze. *Tbx1* overexpression had no effect on the relative time (means \pm SEM) spent in the open arms of the maze (Treatment, $F(1,36)=1.85$, $p=0.182$; Treatment \times Age, $F(1,36)=2.19$, $p=0.147$). **d.** *Tbx1* overexpression had no effect on thigmotaxis (Treatment, $F(1,36)=0.181$, $p=0.673$; Treatment \times Age, $F(1,36)=0.04$, $p=0.848$; Treatment \times Age \times Time $F(5,180)=0.803$, $p=0.549$). **e.** *Tbx1* overexpression had no effect on motor activity (means \pm SEM) (Treatment, $F(1,36)=1.67$, $p=0.205$). 1 month, EGFP, $n = 8$; Tbx1-EGFP, $n = 7$. 2 months, EGFP, $n = 12$; Tbx1-EGFP, $n = 13$.

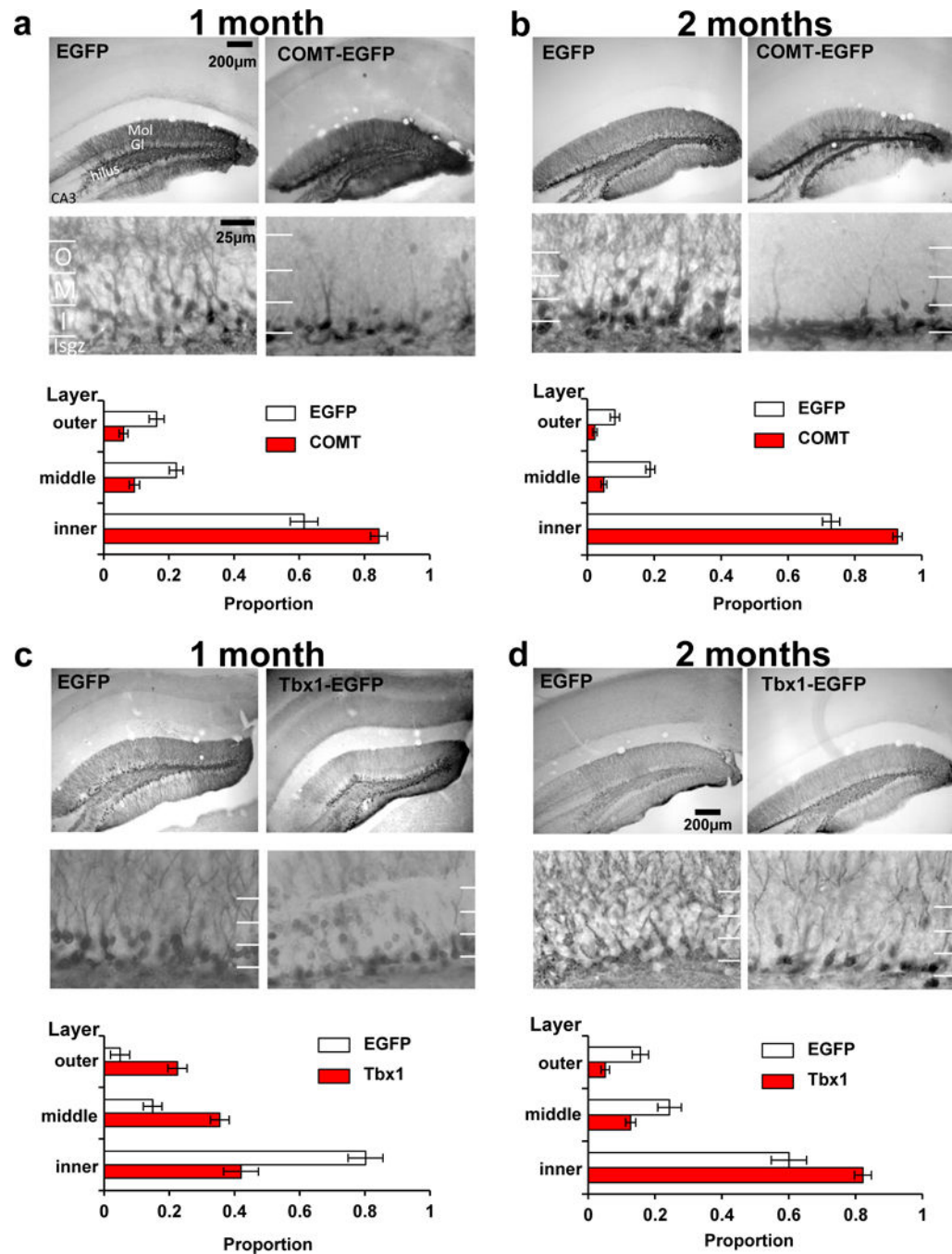


Fig. 3. Effects of *COMT* and *Tbx1* overexpression on the localization of transduced cells in the hippocampal granular layer. The inner third zone includes the subgranular zone. Proportions (means \pm SEM) of transduced cells are shown below representative images of *COMT* groups at 1 (a) and 2 months of age (b). More cells remained in the inner third zone following *COMT* overexpression at age 2 months than 1 month (Treatment, $F(1,12584)=65.89$, $p < 0.0001$; Age, $F(1,12584)=10.24$, $p=0.0014$). 1 month group: EGFP, $N=42$ section images; COMT-EGFP, $N=34$ section images; 2 months group: EGFP, $N=35$ section images; COMT-

EGFP, N=31 section images. Proportions (means \pm SEM) of transduced cells in *EGFP* and *Tbx1-EGFP* injected groups at 1 month (**c**) and 2 months of age (**d**) are shown. The distribution of transduced cells was dependent on age and treatment. Relatively more cells were found in the inner zone than middle and outer cell zones of both *EGFP*-infused mice and *Tbx-1* infused mice in an age-dependent manner (Treatment \times Age, $F(1,8962)=46.16$, $p<0.0001$). 1 month group: EGFP, N=42 section images; Tbx1-EGFP, N=29 section images; 2 months group: EGFP, N= 13 section images; Tbx1-EGFP, N=22 section images. Abbreviations: O, outer third zone; M, middle third zone; I, inner third zone; Isgz, inner, subgranular zone; Mol, molecular zone of the dentate gyrus; Gl, Granular layer of the dentate gyrus; CA3, Region III of hippocampus proper.

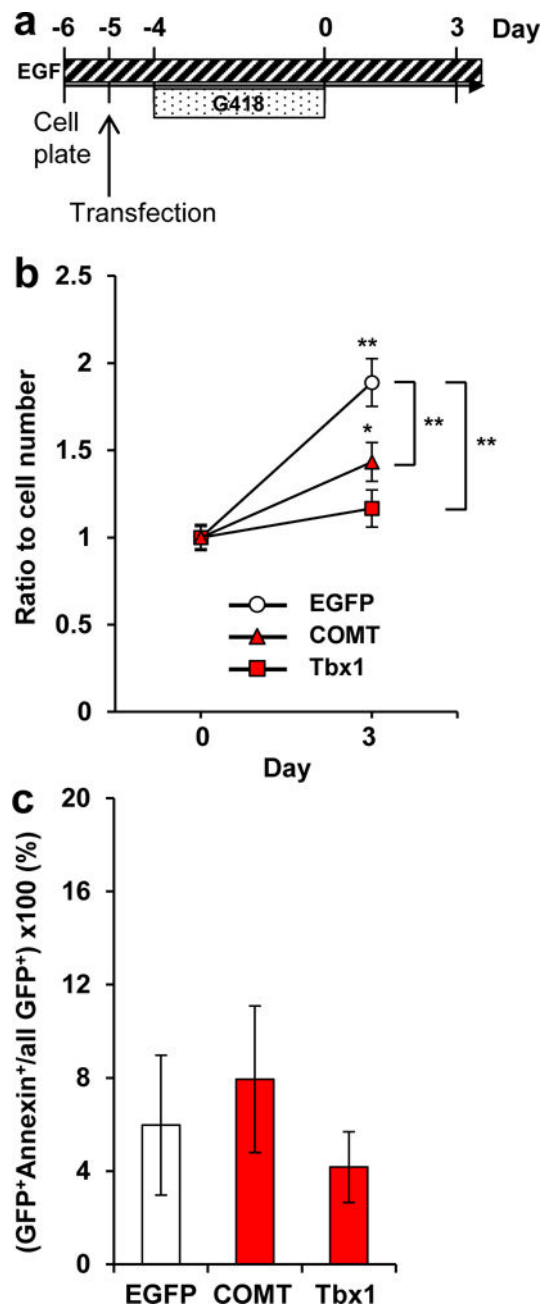


Fig. 4.

a. *In vitro* experimental design. **b.** Gene overexpression had differential effects on adult neural stem/progenitor cell proliferation (Gene \times Day, $F(2,66)=5.89$, $p=0.0044$). Means (\pm SEM) are shown. ** beside brackets indicates significantly (1%) different from EGFP group at day 3 group; * and ** above symbols indicates significantly (5% and 1%, respectively) different from Day 0. $N=12$ cell clones derived from 12 different pups/gene groups. **c.** *Tbx1* and *COMT* overexpression had no effect on apoptosis of adult neural stem/progenitor cells *in vitro* ($p=0.764$). $N=4$ cell clones per gene group derived from 4 pups. Abbreviations: EGF, epidermal growth factor; G418, the antibiotic Geneticin.