



Importance of Indigenous Peoples' lands for the conservation of Intact Forest Landscapes

John E Fa^{1,2*}, James EM Watson^{3,4}, Ian Leiper⁵, Peter Potapov⁶, Tom D Evans⁴, Neil D Burgess^{7,8}, Zsolt Molnár⁹, Álvaro Fernández-Llamazares¹⁰, Tom Duncan⁵, Stephanie Wang⁴, Beau J Austin⁵, Harry Jonas¹¹, Cathy J Robinson^{5,12}, Pernilla Malmer¹³, Kerstin K Zander⁵, Micha V Jackson^{5,14}, Erle Ellis¹⁵, Eduardo S Brondizio¹⁶, and Stephen T Garnett⁵

Intact Forest Landscapes (IFLs) are critical strongholds for the environmental services that they provide, not least for their role in climate protection. On the basis of information about the distributions of IFLs and Indigenous Peoples' lands, we examined the importance of these areas for conserving the world's remaining intact forests. We determined that at least 36% of IFLs are within Indigenous Peoples' lands, making these areas crucial to the mitigation action needed to avoid catastrophic climate change. We also provide evidence that IFL loss rates have been considerably lower on Indigenous Peoples' lands than on other lands, although these forests are still vulnerable to clearing and other threats. World governments must recognize Indigenous Peoples' rights, including land tenure rights, to ensure that Indigenous Peoples play active roles in decision-making processes that affect IFLs on their lands. Such recognition is critical given the urgent need to reduce deforestation rates in the face of escalating climate change and global biodiversity loss.

Front Ecol Environ 2020; 18(3): 135–140, doi:10.1002/fee.2148

It is unlikely that global climate and biodiversity targets will be met without the conservation of forest systems that remain free from extensive industrial and intensive agricultural operations (Potapov *et al.* 2017; Watson *et al.* 2018; Dinerstein *et al.* 2019). The global Intact Forest Landscape (IFL) estate consists of approximately 23% of global forests but declined in extent by nearly one-tenth between 2000 and 2016 (Potapov *et al.* 2017). IFLs can provide more than 30% of the mitigation action needed by 2050 to keep global warming below 2°C (Griscom *et al.* 2017), a level widely believed to be the threshold for avoidance of catastrophic climate change (IPCC 2018).

As defined by Potapov *et al.* (2017), IFLs are seamless mosaics of forests and associated natural treeless ecosystems that exhibit no remotely detected signs of human activity or habitat fragmentation, and that are large enough to maintain all native biological diversity, including viable populations of wide-ranging species. Although all IFLs are a part of the global forest zone, some may contain extensive naturally treeless areas, such as grasslands, wetlands, lakes, alpine areas, and ice. The definition of IFLs builds on that of the “frontier forest” developed by the World Resources Institute (Bryant *et al.* 1997). The IFL concept was originally applied to boreal forests, where harvesting consists primarily of clearcutting (Yaroshenko *et al.* 2001), but was eventually used to describe forests worldwide, including tropical forests, where selective logging and land-use conversion prevail (Potapov *et al.* 2017).

Globally, Indigenous Peoples manage or have tenure rights over at least ~38 million km² of land across 87 countries or politically distinct areas on all inhabited continents (see Figure 1 in Garnett *et al.* [2018]). This represents over 25% of the world's land surface and intersects with about 40% of all terrestrial protected areas and 37% of remaining natural lands. Here, we estimate the degree of overlap between IFLs and Indigenous Peoples' lands to explore the potential role of Indigenous Peoples as IFL custodians. IFLs are recognized as critical strongholds for the protection of Indigenous and rural cultures and livelihoods (Figure 1), as well as being irreplaceable in terms of biodiversity conservation and provision of ecosystem services (Watson *et al.* 2018). Moreover, IFLs in tropical, temperate, and boreal biomes contain globally important carbon (C) stocks, and store considerably more C than degraded and/or fragmented forests (eg Rozak *et al.* 2018).

¹Division of Biology and Conservation Ecology, School of Science and the Environment, Manchester Metropolitan University, Manchester, UK *(jfa949@gmail.com); ²Center for International Forestry Research, Jalan Cifor Rawajaha, Situ Gede, Bogor Barat, Kota Bogor, Indonesia; ³School of Earth & Environmental Sciences, The University of Queensland, Brisbane, Australia; ⁴Wildlife Conservation Society, New York, NY; ⁵Charles Darwin University, Casuarina, Australia; ⁶Global Land Analysis and Discovery Lab, Department of Geography, University of Maryland, College Park, MD; ⁷UN Environment World Conservation Monitoring Centre, Cambridge, UK; ⁸Center for Macroecology, Evolution and Climate, Natural History Museum of Denmark, Copenhagen, Denmark; ⁹MTA Centre for Ecological Research, Hungarian Academy of Sciences, Vácrátót, Hungary; ¹⁰Helsinki Institute of Sustainability Science (HELSUS), Faculty of Biological and Environmental Sciences, University of Helsinki, Helsinki, Finland; ¹¹Future Law, Lorong Pokok Kapas, Taman Faber, Malaysia; ¹²Commonwealth Scientific and Industrial Research Organisation, Ecoscience Precinct, Dutton Park, Australia; ¹³Stockholm Resilience Centre, Stockholm University, Stockholm, Sweden; ¹⁴School of Biological Sciences, The University of Queensland, Brisbane, Australia; ¹⁵Geography & Environmental Systems, University of Maryland, Baltimore, MD; ¹⁶Department of Anthropology, Indiana University, Bloomington, IN



Figure 1. (a) The Amazonian rainforest, the largest expanse of Intact Forest Landscapes (IFLs) that is in a tropical region and that occurs within Indigenous Peoples' lands. Examples of Indigenous Peoples living within IFLs worldwide include (b) three generations of women from the Cofán people in Chontapunta, Provincia de Napo, Ecuador, within the Amazon Basin; (c) Baka Pygmy women preparing dinner in a village near Mintom, southeastern Cameroon, an area within the forests of the Congo Basin, an important tropical moist forest in Africa; and (d) members of the Kwerba community in Papua, Indonesia, on the island of New Guinea, practicing with traditionally made hunting weapons.

Methods

For each country or administratively independent entity, we first overlaid maps of Indigenous People's lands and IFLs to determine how much they intersected, then calculated the areal extent of the overlaps within distinct biomes and biogeographic realms. All geospatial analyses were conducted in the Mollweide projection using ArcGIS Pro v2.2.1.

We used the geospatial data on the extent of Indigenous Peoples' lands reported by Garnett *et al.* (2018), noting the challenges and ethical considerations involved in mapping such areas. These data represent the most comprehensive assessment of terrestrial lands owned and/or managed by Indigenous Peoples throughout the world. Indigenous Peoples were described in Garnett *et al.* (2018) as the approximately 370 million people around the world who define themselves as Indigenous having "descended from populations who inhabited a country before the time of conquest or colonization [and] who retain at least some of their own social, economic, cultural, and political institutions".

Geospatial data for IFLs were sourced from the Intact Forest Landscapes website (www.intactforests.org) for the years 2000, 2013, and 2016. Geospatial data delineating the current extent of forest landscapes, referred to as the "forest zone" and divided into regions (Potapov *et al.* 2017), were also derived from the IFLs mapping website. We obtained data about the extent of IFLs within 65 countries; the extent of Indigenous People's lands could also be determined in 50 (76%) of these (WebTable 1). We used the Terrestrial Ecoregions of the World (TEOW)

classification of biomes and biogeographic realms (Olson *et al.* 2001). Geospatial data for TEOW were sourced from WWF (Olson *et al.* 2001). Geospatial data for the world's administrative areas were sourced from the 2015 Global Administrative Areas (GADM) spatial database v2 (<http://gadm.org/version2>); GADM data were used by Garnett *et al.* (2018) to define administrative areas for mapping Indigenous Peoples' lands and their role in conservation, and by Potapov *et al.* (2017) for assessing IFL reduction over the period 2000–2013. No areas were consolidated for the analyses (eg Christmas, Norfolk, and Cocos [Keeling] islands were not merged with Australia).

Results

Using data from the 50 countries containing IFLs and Indigenous Peoples' lands, which account for 98.4% of the world's IFL area, we estimated that 23% of the 49.7 million km² forest zone was IFL (WebTable 1). The forest zone in Indigenous Peoples' lands amounted to 13.1 million km², or

at least one-quarter of the total forest zone in the sampled countries.

IFLs within Indigenous Peoples' lands covered at least 4.2 million km² or 36.2% of the world's IFL area, which covers a total of 11.6 million km² (Figure 2). The proportion of Indigenous Peoples' lands mapped as IFLs was considerably higher (10.9%) than the proportion of other lands (defined here as all land outside Indigenous Peoples' lands) mapped as IFLs (6.8%).

In 36 of the 50 sampled countries, the ratio of IFL area to total forest zone area was higher on Indigenous Peoples' land than on other lands (Figure 3). For each country, the percentage of the forest zone occupied by IFLs in Indigenous Peoples' lands was higher ($20.8 \pm 23.5\%$) than in other lands ($13.4 \pm 19.4\%$). In many countries Indigenous Peoples' lands had a higher proportion of the countries' IFLs than their proportion of the forest zone, in contrast to other lands (Figure 4).

The global extent of IFLs has declined by 9.4% (1.2 million km²) since 2000. The total reduction across all countries was 8.2% on Indigenous Peoples' lands (or $15.3 \pm 15.4\%$ per country) and 10% in other lands (an average of $19.6 \pm 21.4\%$ per country).

Biomes

Of the 2098 IFL patches mapped in 2016, 1277 (61%) overlapped with Indigenous Peoples' lands, including 418 (20%) where the entire extent of IFLs was located on Indigenous Peoples' lands. Of the world's IFLs, 84% of the area occurs

either in “Tropical and Subtropical Moist Broadleaf Forests” (comprising 45% of IFL area) and “Boreal Forests/Taiga” (39% of IFL area) biomes (WebTable 2).

Indigenous Peoples' lands cover 32% of the forest zone and 38% of IFLs in those biomes. The reduction in IFL area since 2000 has been smaller on Indigenous Peoples' lands (7.6% reduction in IFL area) than on other lands (9.9% reduction in IFL area) in these two biomes. Within the “Tundra” biome, 75% of the forest zone was mapped as IFL, the greatest proportion within any biome. Both Indigenous Peoples' lands and other lands have a high proportion of their forest zone within this biome classified as IFL, and both showed a small reduction in IFLs since 2000. Since 2000, reductions in IFLs have been greatest in the “Mediterranean Forests, Woodlands, and Scrub” biome (68% reduction in IFL area), but there have also been large contractions in both “Tropical and Subtropical Dry Broadleaf Forests” (39% reduction) and “Tropical and Subtropical Grasslands, Savannas, and Shrublands” (32%). Across these three biomes, IFL reduction has been greater on other lands (41%) than on Indigenous Peoples' lands (32%).

In 2016, 71% of the area of IFLs in “Mediterranean Forests, Woodlands, and Scrub” was within Indigenous Peoples' lands, and the reduction of IFL in this biome was lower (62% reduction) than for other lands (77% reduction).

Biogeographic realms

Approximately 87% of the global extent of IFLs occurs within the three broad biogeographic realms: Neotropic (36.3%), Nearctic (28.6%), and Palearctic (22.0%) (WebTable 3). The proportion of IFLs on Indigenous Peoples' lands within these three realms ranged from 67.1% (Palearctic) to 41.1% (Neotropical) to just 3.6% (Nearctic) (Figure 5).

Less than 5% of the forest zone in the Indomalaya realm consisted of IFLs, with the majority (86.6%) of IFLs in the Indomalaya realm occurring on Indigenous Peoples' lands. Of all biogeographic realms, the Indomalaya realm also experienced the greatest reduction in IFL area between 2000 and 2016 (19.6%), with losses being far greater on other lands (36.5%) than on Indigenous Peoples' lands (16.2%). A similar proportion of IFLs was lost in the Australasian realm, with similar contractions on Indigenous Peoples' lands (19.5%) and other lands (18.4%).

Discussion

In parallel to Garnett *et al.*'s (2018) analyses of the role that Indigenous Peoples play in managing natural habitats across the planet, our results show this is also the case

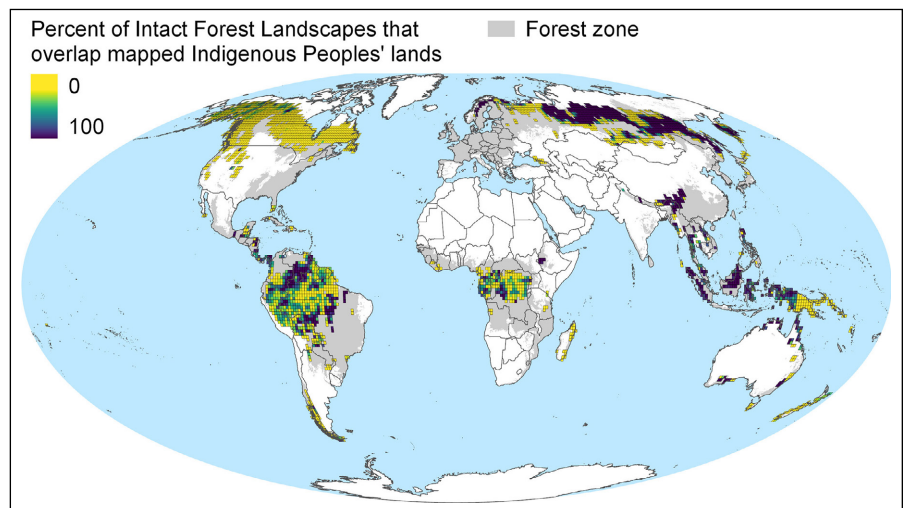


Figure 2. Overlap of global IFLs and Indigenous Peoples' lands; note that the resolution is by necessity imprecise, as boundaries between Indigenous and other lands are often under dispute.

for IFLs. The proportion of IFLs is higher on Indigenous Peoples' lands than on other lands, and our comparisons by country, biome, and biogeographic realms reveal that over one-third of the world's remaining IFLs are located on Indigenous Peoples' lands. The true figure may indeed be considerably higher because we used a conservative map layer (notably in Canada) in our analysis. Understanding the scale of IFLs over which Indigenous Peoples exercise customary rights is central to engaging and supporting

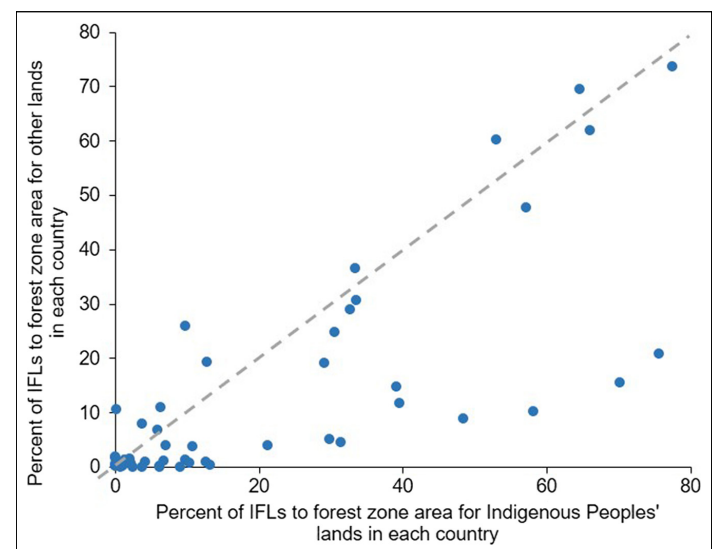


Figure 3. Percentage of the forest zone mapped as IFLs for Indigenous Peoples' lands and other lands, for each of the 50 sampled countries with both IFLs and Indigenous Peoples' lands. Gray dashed line represents a 1:1 ratio between the proportion of Indigenous Peoples' lands and other lands; all points to the right of the dashed line represent places where a higher percentage of the forest zone remains as IFLs for Indigenous Peoples' lands than for other lands.

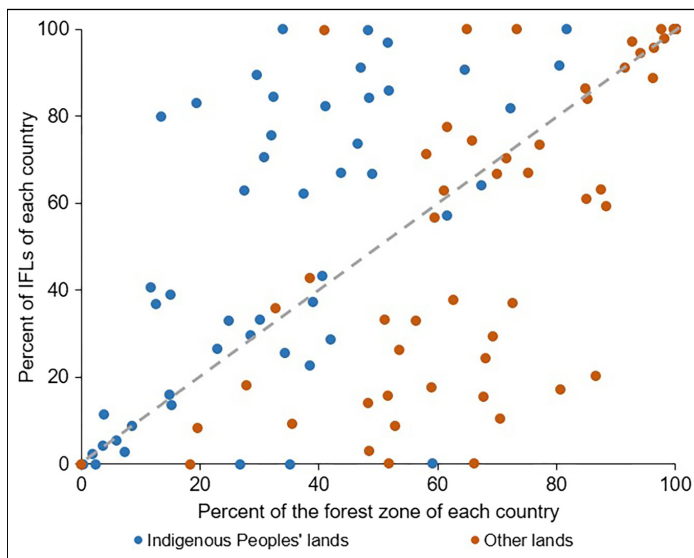


Figure 4. Comparison between the percentage of the forest zone and the percentage of IFLs for Indigenous Peoples' lands and other lands, for each country with IFLs. Each data point represents either all of a country's Indigenous Peoples' lands (blue circles) or all of its other lands (red circles). Gray dashed line represents a 1:1 ratio between the percentage of forest zone and IFLs; all points to the right of the dashed line indicate lands that have a higher percentage of IFLs relative to forest zone.

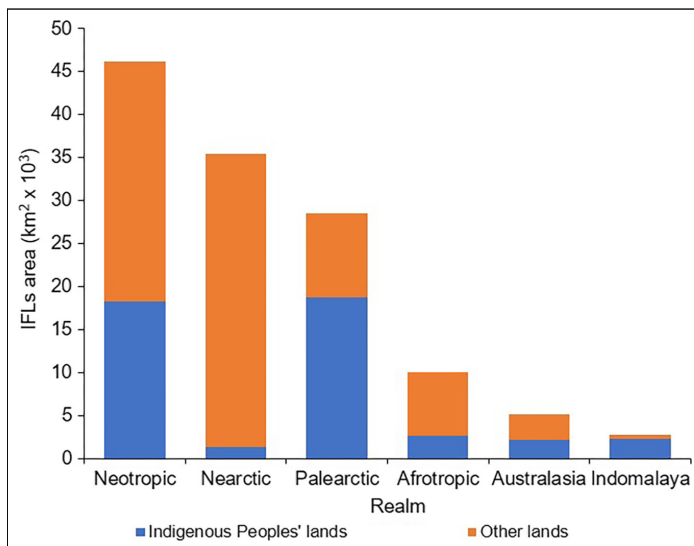


Figure 5. Proportion of Indigenous Peoples' lands (blue) and other lands (orange) classified as IFL across biogeographic realms; importantly, only limited information about mapped Indigenous Peoples' lands in the Nearctic realm is available. Oceania is not shown in this figure due to lack of information, and Antarctica is omitted because IFLs are not found in this region. Both geographic regions are included in WebTable 3 for completeness.

efforts to conserve their forests (Robinson *et al.* 2016; Schleicher *et al.* 2017).

IFLs benefit conservation and climate-change mitigation efforts in ways that transcend the local importance of any given IFL (Ricketts *et al.* 2010). However, when IFL governance is top-down and fails to consider local interests, rights,

and values (including those of Indigenous Peoples), misunderstandings, conflicts, and ecological degradation of forests often result (IPBES 2019). Given the substantial IFL coverage in Indigenous Peoples' lands, the role of these communities (<5% of the global population) is fundamental. Indigenous Peoples have long recognized the importance of conserving and adequately managing IFLs on their lands, not only because they fulfill their material and non-material cultural needs, but also because they reinforce and/or re-establish their traditional obligations with the land. On their own, community-based institutions and local governance regimes led by Indigenous Peoples are as effective as (or even more effective than) traditional protected areas in buffering against deforestation and forest degradation (RRI 2016; Blackman *et al.* 2017; Schleicher *et al.* 2017). Formal recognition of Indigenous Peoples' rights over their forest lands can also slow deforestation (Ricketts *et al.* 2010; Ceddia *et al.* 2015). Moreover, Indigenous governance and land management regimes have also been successful at achieving sustainable human-landscape interrelationships in numerous geographical locations and circumstances (Brondizio and Le Tourneau 2016; Norman 2017).

Despite the desire of many Indigenous Peoples to protect the IFLs that occur on their lands, many of these areas are under pressure from intensive development. Although IFL losses since 2000 appear to have been slightly lower on Indigenous Peoples' lands than on other lands, the world's remaining IFLs are under considerable threat from infrastructure development and land-use change. Where loss of IFLs on Indigenous Peoples' lands has already occurred, it has often not been with Indigenous Peoples' consent but rather as a result of the lack of recognition of their rights, including land tenure (FPP *et al.* 2016; RRI 2016). In some IFLs, critical C stocks and sinks are currently threatened by the lack of recognition of the customary rights of Indigenous Peoples and other local communities (Finley-Brook 2007; FPP *et al.* 2016); land tenure insecurity in Indigenous Peoples' lands is also an underlying driver of deforestation (eg Robinson *et al.* 2014; Ceddia *et al.* 2015; IPBES 2019). As such, strategies to preserve IFLs from degradation and clearance are likely to be more effective if they establish and maintain equitable partnerships with Indigenous Peoples. To this end, measures to protect IFLs will benefit greatly from collaborative partnerships that incorporate Indigenous knowledge systems, practices, and institutions as a core component. Also important is the fact that the inherent value of IFLs is rarely addressed in most global policy frameworks (including several multilateral environmental agreements); we recommend that policy makers take further steps to recognize this value. The recent decision by the IUCN to develop a policy concerning IFL protection is an important initiative that hopefully will prompt other institutions to follow suit. Such agreements may facilitate landscape-scale conservation and management and resolve conflicts between stakeholders.

Considering that land tenure insecurity is particularly acute across much of the tropics (Robinson *et al.* 2014; Ceddia *et al.* 2015), it is of concern that, until recently, only 21 of 131 tropical countries (16%) have formally committed to expanding Indigenous and local communities' land tenure rights under the UN Framework Convention on Climate Change's Paris Agreement (RRI 2016). More Parties to the Paris Agreement must confer legal recognition and protection to Indigenous Peoples' lands through measures such as forest titling programs, which limit new colonization and secure alienation rights (Finley-Brook 2007; Blackman *et al.* 2017). All stakeholders involved in protection of IFLs should also provide additional resources to support and/or partner with Indigenous Peoples whose relationships with intact forests offer positive biodiversity conservation outcomes and/or reduced greenhouse-gas (GHG) emissions. Granting Indigenous Peoples formal legal titles to their forests must be seen as the most critical mechanism for slowing forest loss and protecting these lands from uncontrolled and unregulated resource extraction (Larson and Pulhin 2012; Blackman *et al.* 2017). Collaborative governance regimes involving Indigenous and other partners (both governmental and non-governmental) that are carefully designed will also ensure that Indigenous management institutions and priorities are supported and strengthened, including those applicable to forest lands (Robinson *et al.* 2016).

Our analysis demonstrates there is a pressing need to better understand the interactions between Indigenous Peoples and their ecosystems when negotiating local or global conservation agreements both within and outside of Indigenous Peoples' lands. In particular, conservation groups should not assume that Indigenous Peoples have uniform aspirations to maintain the natural environment in its current state. A wide range of political, cultural, and economic motivations drive land management approaches and, as a result, conservation priorities and regulations may sometimes differ or even clash with Indigenous management goals (Brondizio and Le Tourneau 2016; Garnett *et al.* 2018). Indigenous Peoples cannot assume the burden of global conservation and climate mitigation challenges before land tenure rights are secure and/or without adequate resources and support. Conservation policies aimed to protect biodiversity and/or increase C storage on Indigenous Peoples' lands should not only deliver environmental returns but also have strong local support, align with Indigenous Peoples' self-determined priorities and motivations, and provide mechanisms for benefit sharing through equitable partnerships (Larson and Pulhin 2012).

Using participatory methods to identify culturally appropriate procedures and tools that respect Indigenous Peoples' rights and institutions can improve the legitimacy and effectiveness of conservation policies (Brondizio and Le Tourneau 2016). Abiding by the principle of allowing them to give or withhold Free, Prior and Informed Consent to any project that may affect them or their territories must be central for any ethical, equitable, and fruitful conservation partnerships (Fernández-Llamazares and Cabeza 2018; Ban *et al.* 2018).

Following these procedures reinforces the importance of "bottom-up" approaches to conservation investment and policy design, particularly given the numerous examples of questionable social and ecological outcomes resulting from "top-down" conservation (Brondizio and Le Tourneau 2016). Many innovative approaches and tools facilitate discussion of collaborative partnership building, co-management, and power sharing around conservation initiatives with Indigenous Peoples (eg Whakatane Mechanism; <http://whakatane-mechanism.org>), which also can support just, inclusive, and equitable environmental governance.

Generally, the role of funders and their responsibilities in ensuring compliance with human rights must be given more attention in conservation. The multilateral Convention on Biological Diversity (CBD) agreement includes voluntary guidelines for safeguards in biodiversity financing mechanisms (CBD Decision XII/3, Annex III), stressing also the importance of the effective participation of Indigenous Peoples and local communities in the selection, design, and implementation of biodiversity conservation efforts. Ongoing development of the CBD Post-2020 Global Biodiversity Framework represents a key opportunity for biodiversity conservation to take into account Indigenous Peoples' rights (Malmer *et al.* 2018). In numerous science and policy forums, Indigenous Peoples and their representatives have repeatedly asserted that this connection should be explicitly made (eg in REDD+, protected areas, Indigenous and community conserved areas, and other effective area-based conservation measures). If local Indigenous communities are expected to help prevent the degradation of IFLs as part of the global effort to combat climate change, projects and partnerships will need to integrate Indigenous, biodiversity, and GHG emission goals.

Acknowledgements

This project was partly funded by the Wildlife Conservation Society, to whom we are grateful. JEF was funded by the US Agency for International Development as part of the Bushmeat Research Initiative of the CGIAR research program on Forests, Trees and Agroforestry. We thank R Ramsey at Charles Darwin University for her ongoing administrative support, and O Massana, A López-Baucells, A Ledeu, G Peña Gimeno, and ND Liswanti/CIFOR for photographs in Figure 1.

References

- Ban NC, Frid A, Reid M, *et al.* 2018. Incorporate Indigenous perspectives for impactful research and effective management. *Nature Ecol Evol* 2: 1680–83.
- Blackman A, Corral L, Lima ES, and Asner GP. 2017. Titling indigenous communities protects forests in the Peruvian Amazon. *P Natl Acad Sci USA* 114: 4123–28.
- Brondizio ES and Le Tourneau F-M. 2016. Environmental governance for all. *Science* 352: 1272–73.

- Bryant D, Nielsen D, and Tangle L. 1997. The last frontier forests: ecosystems and economies on the edge. Washington, DC: World Resources Institute.
- Ceddia M, Gunter U, and Corriveau-Bourque A. 2015. Land tenure and agricultural expansion in Latin America: the role of Indigenous peoples' and local communities' forest rights. *Global Environ Chang* **35**: 316–22.
- Dinerstein E, Vynne C, Sala E, *et al.* 2019. A global deal for nature: guiding principles, milestones, and targets. *Science Advances* **5**: eaaw2869.
- Fernández-Llamazares Á and Cabeza M. 2018. Rediscovering the potential of Indigenous storytelling for conservation practice. *Conserv Lett* **11**: 1–12.
- Finley-Brook M. 2007. Indigenous land tenure insecurity fosters illegal logging in Nicaragua. *Int For Rev* **9**: 850–64.
- FPP (Forest Peoples Programme), the International Indigenous Forum on Biodiversity, and the Secretariat of the Convention on Biological Diversity. 2016. Local biodiversity outlooks. Indigenous peoples' and local communities' contributions to the implementation of the Strategic Plan for Biodiversity 2011–2020. Moreton-in-Marsh, UK: FPP.
- Garnett ST, Burgess ND, Fa JE, *et al.* 2018. A spatial overview of the global importance of Indigenous lands for conservation. *Nat Sustain* **1**: 369–74.
- Griscom BW, Adams J, Ellis PW, *et al.* 2017. Natural climate solutions. *P Natl Acad Sci USA* **114**: 11645–50.
- IPBES (Intergovernmental Science-Policy Platform on Biodiversity and Ecosystem Services). 2019. Summary for policymakers of the global assessment report on biodiversity and ecosystem services of the Intergovernmental Science-Policy Platform on Biodiversity and Ecosystem Services (Díaz S, Settele J, Brondízio ES, *et al.* [Eds]). Bonn, Germany: IPBES Secretariat.
- IPCC (Intergovernmental Panel on Climate Change). 2018. Summary for policymakers. In: Global warming of 1.5°C. Geneva, Switzerland: IPCC.
- Larson AM and Pulhin JM. 2012. Enhancing forest tenure reforms through more responsive regulations. *Conserv Soc* **10**: 103–13.
- Malmer P, Chongeywo PK, Clarke C, *et al.* 2018. Global dialogue on human rights and biodiversity conservation. Stockholm, Sweden: Stockholm Resilience Centre.
- Norman ES. 2017. Standing up for inherent rights: the role of Indigenous-led activism in protecting sacred waters and ways of life. *Soc Natur Resour* **30**: 537–53.
- Olson DM, Dinerstein E, Wikramanayake ED, *et al.* 2001. Terrestrial ecoregions of the world: a new map of life on Earth. *BioScience* **51**: 933–38.
- Potapov P, Hansen MC, Laestadius L, *et al.* 2017. The last frontiers of wilderness: tracking loss of intact forest landscapes from 2000 to 2013. *Science Advances* **3**: e1600821.
- Ricketts TH, Soares-Filho B, da Fonseca GAB, *et al.* 2010. Indigenous lands, protected areas, and slowing climate change. *PLoS Biol* **8**: 6–9.
- Robinson BE, Holland MB, and Naughton-Treves L. 2014. Does secure land tenure save forests? A meta-analysis of the relationship between land tenure and tropical deforestation. *Global Environ Chang* **29**: 281–93.
- Robinson CJ, Renwick AR, May T, *et al.* 2016. Indigenous benefits and carbon offset schemes: an Australian case-study. *Environ Sci Policy* **56**: 129–34.
- Rozak A, Rutishauser E, Raulund-Rasmussen K, and Sist P. 2018. The imprint of logging on tropical forest carbon stocks: a Bornean case-study. *Forest Ecol Manag* **417**: 154–66.
- RRI (Rights and Resources Initiative). 2016. Toward a global baseline of carbon storage in collective lands: an updated analysis of Indigenous peoples' and local communities' contributions to climate change mitigation. Washington, DC: RRI.
- Schleicher J, Peres CA, Amano T, *et al.* 2017. Conservation performance of different conservation governance regimes in the Peruvian Amazon. *Sci Rep* **7**: 11318.
- Watson JEM, Evans T, Venter O, *et al.* 2018. The exceptional value of intact forest ecosystems. *Nature Ecol Evol* **2**: 599–610.
- Yaroshenko AY, Potapov PV, and Turubanova SA. 2001. The last intact forest landscapes of Northern European Russia. Moscow, Russia: Greenpeace Russia and Global Forest Watch.

■ Supporting Information

Additional, web-only material may be found in the online version of this article at <http://onlinelibrary.wiley.com/doi/10.1002/fee.2148/supinfo>