



Review

# Proteostasis Disturbances and Inflammation in Neurodegenerative Diseases

Tuuli-Maria Sonninen <sup>1</sup>, Gundars Goldsteins <sup>1</sup>, Nihay Laham-Karam <sup>1</sup> , Jari Koistinaho <sup>1,2</sup> and Šárka Lehtonen <sup>1,2,\*</sup> 

<sup>1</sup> A.I. Virtanen Institute for Molecular Sciences, University of Eastern Finland, Kuopio, Neulaniementie 2, 70211 Kuopio, Finland; tuuli-maria.sonninen@uef.fi (T.-M.S.); gundars.goldsteins@uef.fi (G.G.); nihay.laham-karam@uef.fi (N.L.-K.); jari.koistinaho@helsinki.fi (J.K.)

<sup>2</sup> Neuroscience Center, University of Helsinki, Haartmaninkatu 8, 00014 Helsinki, Finland

\* Correspondence: sarka.lehtonen@uef.fi

Received: 31 August 2020; Accepted: 24 September 2020; Published: 28 September 2020



**Abstract:** Protein homeostasis (proteostasis) disturbances and inflammation are evident in normal aging and some age-related neurodegenerative diseases. While the proteostasis network maintains the integrity of intracellular and extracellular functional proteins, inflammation is a biological response to harmful stimuli. Cellular stress conditions can cause protein damage, thus exacerbating protein misfolding and leading to an eventual overload of the degradation system. The regulation of proteostasis network is particularly important in postmitotic neurons due to their limited regenerative capacity. Therefore, maintaining balanced protein synthesis, handling unfolding, refolding, and degrading misfolded proteins are essential to preserve all cellular functions in the central nervous system. Failing proteostasis may trigger inflammatory responses in glial cells, and the consequent release of inflammatory mediators may lead to disturbances in proteostasis. Here, we review the mechanisms of proteostasis and inflammatory response, emphasizing their role in the pathological hallmarks of neurodegenerative diseases such as Alzheimer’s disease, Parkinson’s disease, and amyotrophic lateral sclerosis. Furthermore, we discuss the interplay between proteostatic stress and excessive immune response that activates inflammation and leads to dysfunctional proteostasis.

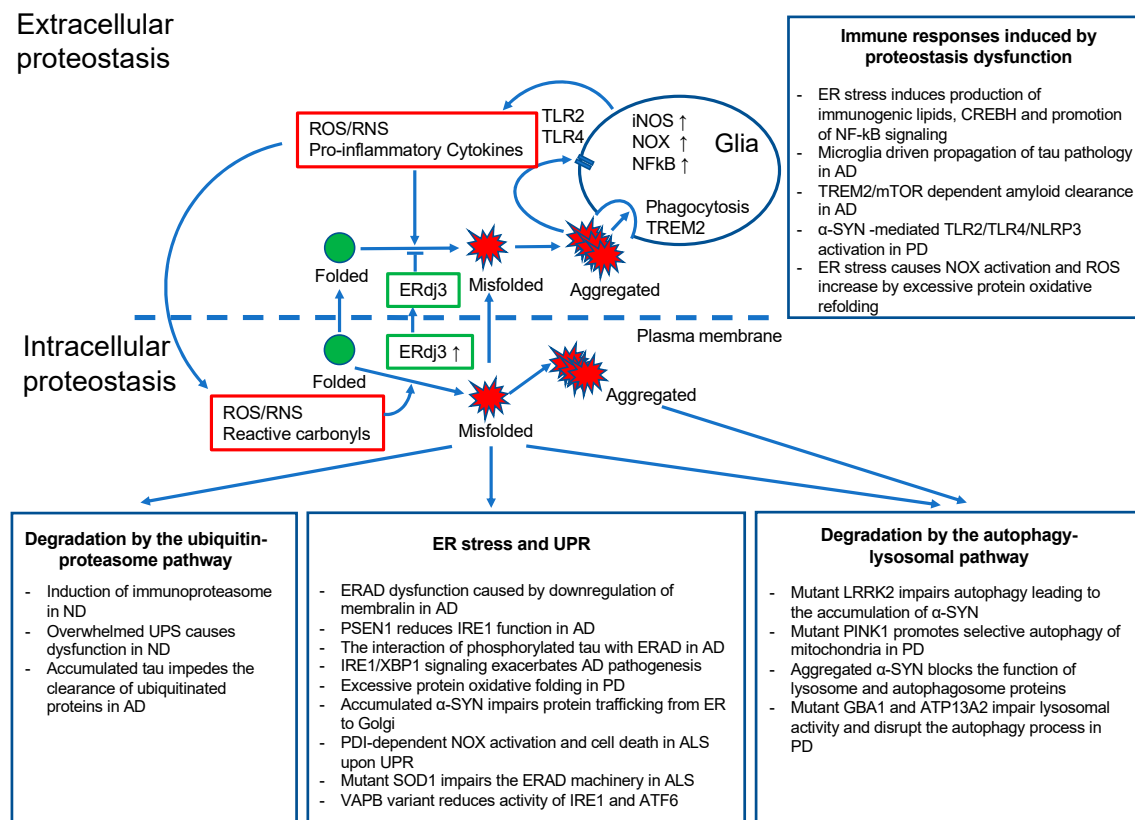
**Keywords:** neuroinflammation; immunoproteasome; ER stress; protein misfolding; ROS; pro-inflammatory cytokines; lipid peroxidation; advanced glycation end-products

## 1. Inflammation Produces Proteostatic Dysfunction

Inflammation and the disruption of proteostasis manifest upon normal aging and in some age-related neurodegenerative diseases. The neuroinflammation is considered as a beneficial physiological response within the brain or spinal cord, promoting the clearance of neuronal debris and assisting in tissue repair. However, uncontrolled and sustained inflammatory signaling can contribute to a variety of chronic inflammatory diseases. In the central nervous system (CNS), brain resident microglia and astrocytes are the primary sources of inflammation. Under pathological conditions, these glial cells facilitate the events that promote a neurotoxic environment [1,2]. Since neurons are primarily non-dividing cells and have a limited regenerative capacity, excessive neuronal death in the CNS has consequences on the motor, cognitive, and memory functions that are typically seen in patients of Parkinson’s disease (PD) and Alzheimer’s disease (AD), respectively. Therefore, inflammation has been considered as a contributor to neurodegeneration, together with glial activation and peripheral immune infiltration [3,4].

Proteostasis i.e., protein homeostasis, is the process of maintaining the intracellular and extracellular functional proteins. Proteostasis ensures the proper folding of newly synthesized proteins by mechanisms including the regulation of protein translation as well as the unfolding, refolding, and degradation of misfolded proteins. This process is essential, as 33–35% of newly synthesized proteins are prone to misfolding [5]. The control of proteostasis in postmitotic neurons becomes especially important with aging when the selection of proteostasis machineries are reduced, causing an accumulation of damaged proteins and organelles [6]. The two main protein degradation systems are the ubiquitin–proteasome system (UPS), which is responsible for the degradation of both functional and dysfunctional short-lived proteins coupled with ubiquitin molecules [7,8], and the autophagy-lysosomal system that degrades long-lived proteins, large aggregates of proteins, cellular components and organelles through the lysosomal compartment [9].

In this part of the review, we describe how inflammation causes proteostasis disturbances through the induction of reactive oxygen species (ROS) or reactive nitrogen species (RNS), leading first to the oxidative modification of proteins followed by protein misfolding. We also describe how subsequent dysregulation in the endoplasmic reticulum (ER), UPS, and autophagy leads to proteostatic dysfunction in neurodegenerative diseases (Figure 1).



**Figure 1.** The extracellular and intracellular proteostasis in neurodegenerative diseases. Scheme representing proteostatic dysfunction in neurodegenerative diseases and the associated link between proteostasis and the inflammatory response. ND, neurodegenerative diseases; NF-κB, nuclear factor kappa-light-chain-enhancer of activated B cells; ERdj3, endoplasmic reticulum DnaJ homologue; TREM2, triggering receptor expressed on myeloid cells 2.

### 1.1. Inflammation Induces Oxidative Stress

Inflammation is a protective response of a multicellular organism to injury. The function of inflammation is to localize, eliminate, and remove harmful stimuli and to recover damaged tissues. There has been evidence that ROS are involved in the initiation and progression of the inflammatory

response [10]. ROS have important physiological functions such as the oxidation of cysteines, which is a necessary step in forming disulfide bonds into proteins [11]. However, excessive ROS production can cause oxidative stress, which is defined as disequilibrium between ROS production and the ability to detoxify the reactive oxygen intermediates. The extreme production and release of ROS have been proposed as a general pathological mechanism in all major chronic neurodegenerative diseases, including AD, PD, amyotrophic lateral sclerosis (ALS), Huntington's disease (HD), and multiple sclerosis (MS). Since oxidative stress can induce cell death and promote inflammation [12], cells have a battery of antioxidizing molecules and enzymes to prevent ROS accumulation. In a healthy state, mediators of oxidative stress and inflammation are in balance with the counteracting detoxifying and anti-inflammatory molecules. This balance is disturbed in some pathological states, and it is shifted toward the oxidative stress and pro-inflammatory direction, leading to DNA and protein damage, inflammation, and neuronal cell death. The accumulation of ROS under oxidative stress conditions results in the induction of protein oxidative modifications, including lipid peroxidation and glycoxidation reactions.

## 1.2. ROS and RNS Cause Protein Oxidative Modification Leading to Protein Misfolding

### 1.2.1. Lipid Peroxidation

ROS can cause protein oxidative modification and lipid peroxidation at the cellular level, resulting in the generation of 4-hydroxy-2-nenotal (HNE). Due to its high reactivity, HNE forms protein adducts that cause protein misfolding and disturbances in the protein function. Moreover, HNE can induce carbonyl stress and deplete the antioxidant capacity of the cells. Evidence for lipid peroxidation has been found in AD, PD, ALS, and HD. In AD, elevated levels of HNE have been confirmed in patients [13] and found to target multiple proteins and enzymes. HNE affects the enzymes involved in the elimination of amyloid  $\beta$ -protein ( $A\beta$ ), which are key enzymes of energy metabolism including aldolase, enolase, aconitase, and ATP synthase [14], as well as enzymes involved in antioxidant defense, such as superoxide dismutase, heme oxygenase, and peroxiredoxins [15]. In PD, the formation of HNE-alpha-synuclein adduct increases the oligomerization potential, thus triggering alpha-synuclein ( $\alpha$ -SYN) aggregation [16]. Also, Lewy bodies (LB) stain positively for HNE in PD brains [17]. Besides the direct effect with  $\alpha$ -SYN, HNE binds to the dopamine transporter and inhibits dopamine uptake, enhancing the progression of PD [18]. HNE levels are elevated in the cerebrospinal fluid of patients with ALS [19]. HNE was also found to colocalize with huntingtin inclusions in the striatal neurons, and HNE adducts are present in the caudate and putamen of HD brains [20].

### 1.2.2. Advanced Glycation End-Products

The elevated ROS production can also lead to the formation of advanced glycation end-products (AGEs). Protein glycation is a process in which monosaccharides modify free amino groups of proteins. During this reaction, various intermediate compounds and eventually AGEs are formed. In AD, glycation plays a key role in the formation of amyloid protein, and high levels of AGEs have been observed in fractions of brain plaques. Furthermore, immunohistochemical stainings have demonstrated the presence of AGEs in neurofibrillary tangles and senile plaques [21]. In PD, the glycation of  $\alpha$ -SYN is one of the important factors leading to aggregation and LB formation [22]. AGEs are colocalized with  $\alpha$ -SYN and accelerate the aggregation process [23]. Glycation was also detected in the spinal cord and brain of ALS patients, and further related to ALS, increased levels of AGEs have been found in the presence of the copper-zinc superoxide dismutase (Cu, Zn-SOD-1) mutation that causes ALS [24]. These results suggest that glycation is responsible for the oxidative stress that culminates in neurodegenerative diseases.

### 1.2.3. Reactive Nitrogen Species

In addition to ROS, reactive nitrogen species (RNS) are able to contribute to oxidative stress. RNS is derived from nitric oxide ( $\bullet\text{NO}$ ) and superoxide ( $\text{O}_2\bullet^-$ ) produced via the enzymatic activity of inducible nitric oxide synthase 2 (NOS2) and NADPH oxidase. RNS acts together with ROS to damage the cells and cause nitrosative stress. Among the RNS, especially the highly reactive peroxynitrite, ( $\text{ONOO}^-$ ) is known to induce lipid peroxidation and cause DNA damage [25]. RNS generation also modifies cysteine residues in proteins through S-nitrosylation or nitrotyrosination. The latter has been described in several neurodegenerative diseases linked to oxidative stress. NO production has been directly associated with neuroinflammation, especially with the inflammatory glial response (either astrocyte or microglia) [26]. NO-induced glial activation has a detrimental effect on neurons in AD, PD, and MS [27]. Susceptibility to NO and  $\text{ONOO}^-$  depends on the intracellular antioxidants and stress resistance signaling pathways. High levels of NO metabolites were also detected in post-mortem brains from patients with ALS along with protein damage caused by oxidation [28,29].

### 1.3. Misfolded Proteins Promote ER Stress

One of the typical pathological hallmarks of many neurodegenerative diseases is the accumulation of misfolded proteins within the ER of neurons and glia. ER serves many functions, including folding and correcting the folding of newly synthesized proteins, the disposal of misfolded proteins, and trafficking proteins to the Golgi apparatus. The disturbance and imbalance between the load on the ER functions and its capacity lead to ER stress. ER stress triggers the unfolded protein response (UPR) in the ER in order to return the ER to its normal physiological balance [30]. The activation of UPR turns on a mechanism that allows cells to deal with the accumulated unfolded proteins [31]. While moderate stress enhances cellular protection by altering the transcriptome and proteome of the cell, prolonged ER stress disrupts the protective mechanism of the UPR [32]. Then, the inability to restore ER functions induces cell death via apoptosis and exacerbates neuroinflammation.

Recent research indicates a profound interplay between the ER and oxidative stress, which is mediated by ROS and derived reactive carbonyls, converging at the redox imbalance between a reducing environment in the cytosol and an oxidative ER, respectively [33,34]. ER stress may be both a trigger and a consequence of chronic inflammation. Chronic inflammation is often associated with diseases that arise because of primary misfolding mutations and ER stress. Similarly, ER stress and activation of the UPR are features of many chronic inflammatory and autoimmune diseases [35–37]. Next, we describe how dysregulation in the ER, UPS, and autophagy leads to proteostatic deficit in neurodegenerative diseases.

### 1.4. Dysfunction of Cellular Proteostasis in Neurodegenerative Diseases

ER is a key contributor to proteostasis and UPR controls proteostasis. The UPR and ER-associated degradation (ERAD) interacts in a coordinated manner with the UPS and autophagy–lysosomal system to alleviate protein misfolding or its consequences. It is generally accepted that proteostasis deficits are linked to various neurodegenerative diseases, including AD, PD, and ALS disorders that are characterized by neuronal loss in different regions of the CNS. Even though all these diseases have different clinical outcomes, they all feature the accumulation of protease-resistant misfolded and aggregated pathological proteins.

#### 1.4.1. Proteostasis in Alzheimer's Disease

AD is the most common cause of dementia characterized by progressive cognitive and memory decline. The neuropathology includes the extracellular deposition of  $\text{A}\beta$  in the hippocampus and cortex as well as the formation of intracellular neurofibrillary tangles consisting of hyperphosphorylated tau protein. The  $\text{A}\beta$  peptides are derived from the amyloid precursor protein (APP) cleaved by beta-secretase and gamma-secretase to yield  $\text{A}\beta$ . Mutations in *APP* and *PSEN 1* and *2* genes account

for about 5% of all AD cases, while the remaining cases are sporadic. For these patients, the risk is determined by a combination of genetic and environmental risk factors as well as aging.

Typically, the production of A $\beta$  is counterbalanced by its elimination via processes including proteolytic degradation, cell-mediated clearance, or clearance from the brain into the peripheral blood circulation through passive and active transport. Several enzymes including neprilysin, insulin-degrading enzyme (IDE), endothelin-converting enzyme (ECE), and angiotensin-converting enzyme (ACE) have been reported to be capable of degrading A $\beta$  [38,39]. Additionally, the UPS serves as a major regulator of A $\beta$  accumulation in neuronal cells, either by decreasing the production of A $\beta$  or promoting its proteolytic degradation [40]. Therefore, dysregulation in the UPS and/or an inability to clear A $\beta$  deposits completely leads to A $\beta$  accumulation in neurons' cytoplasm, facilitating A $\beta$  plaques formation. Furthermore, the ER protein membralin, which is an essential component of the ERAD complex mediating the degradation of ER luminal and membrane substrates, was shown to be downregulated in AD, suggesting a critical role for ERAD in AD pathogenesis [41]. Moreover, UPR activation has been demonstrated to correlate with the neuropathology (Braak stages) of AD and with the phosphorylation of ER stress transducer inositol-requiring enzyme-1 $\alpha$  (IRE1 $\alpha$ ) [42]. IRE1 controls the expression of transcription factor XBP1. Interestingly, the polymorphism of the XBP1 promoter was suggested to be a risk factor to the development of AD. Furthermore, *PSEN1* inhibits IRE1 $\alpha$  function [43,44]. Tau, another characteristic protein associated with AD, is an ultrastructural protein that can be degraded by both autophagy and UPS based on its conformation; for example, hypoacetylated tau is preferentially degraded by UPS. On the other hand, soluble and phosphorylated tau can interact with ERAD components and result in the activation of the UPR [45]. The accumulated tau impedes the clearance of ubiquitinated proteins from the ER and causes an ER stress response [45].

#### 1.4.2. Proteostasis in Parkinson's Disease

PD is the second most prevalent neurodegenerative disease that mainly affects the motor system. PD is characterized by a gradual loss of dopaminergic (DA) neurons in the substantia nigra pars compacta and the presence of inclusions known as LB and Lewy neurites. Alpha-SYN fibrils are the main component found in these inclusions located either in neuronal cell bodies or neuronal dendrites and axons. The progressive accumulation of  $\alpha$ -SYN can be linked to the disruption of the UPS [46] and different types of autophagy [47,48]. Pathologically,  $\alpha$ -SYN can affect the functions of several organelles, including ER, Golgi, proteasomes, lysosomes, and mitochondria. The aggregated form of  $\alpha$ -SYN can bind to lysosomal membrane proteins and block their function [47]. It can also inhibit certain enzymatic activity domains of proteasomes [46] and the expression of proteins relevant to autophagosome assembly [48]. It leads to the inefficient removal of aggregated proteins due to the impairment in macroautophagy. Mutant  $\alpha$ -SYN accumulates in the ER, where it can impair protein trafficking from ER to Golgi by interaction with Ras-related protein Rab-1A [49].

While both UPS and autophagy can clear  $\alpha$ -SYN, the main pathway for its degradation appears to be lysosomal [50,51].  $\alpha$ -SYN can be degraded by macroautophagy and chaperone-mediated autophagy (CMA) depending on the structure of the aggregate and possible mutations in genes associated with PD [52]. Small soluble forms of  $\alpha$ -SYN are degraded by CMA. Still, in the pathological condition, the burden shifts to macroautophagy. Yet, both pathways can compensate for each other. Misfolded  $\alpha$ -SYN undergoes alternatively refolding in the ER. However, excessive refolding upregulates protein disulfide isomerase (PDI) reduction. PDI is a chaperone that assists oxidative refolding by forming disulfide bonds in proteins [53]. The re-oxidation of PDI is linked to an increase of hydrogen peroxide (H<sub>2</sub>O<sub>2</sub>), causing the release of cytoplasmic calcium from the ER through the dysregulation of inositol trisphosphate receptor. Released calcium may activate calpain and eventually lead to apoptosis. We have previously shown that PDI's pharmacological inhibition by bacitracin prevents ER redox imbalance and downstream pro-apoptotic events [34]. Importantly, with age, lysosomal functionality is found to be dramatically impaired, and this could be one of the contributing factors to  $\alpha$ -SYN pathology.

Several genes relevant for the onset of PD are involved in or interact with the autophagy–lysosomal system, including mutations in the *GBA1* and *ATP13A2* (*PARK9*) genes [54]. *GBA1* encodes the lysosomal hydrolase Gcase and *PARK9* encodes the lysosomal ATPase. When these genes are mutated, they impair lysosomal activity and disrupt the autophagy process. In addition to the mutations in genes coding for lysosomal components, other PD-associated mutations have been implicated in the process of autophagy. Among those are mutations in the gene encoding vacuolar protein sorting-associated protein 35 (*VPS35*) responsible for endosomal–lysosomal trafficking and mutations in Parkin (*PARK2*), *PINK1* (*PARK6*), *DJ-1* (*PARK7*), and *Fbxo7* (*PARK15*), which have been linked to the process of mitophagy involving the degradation of dysfunctional mitochondria by autophagy [54,55]. *PINK1* interacts with Parkin and promotes the selective autophagy of damaged mitochondria [55]. Moreover, mutated *LRRK2* (*PARK8*) impairs CMA, leading to the accumulation of  $\alpha$ -*SYN* [56] as well as an increased phosphorylation of leucyl-tRNA synthetase impairing autophagy [57].

#### 1.4.3. Proteostasis in Amyotrophic Lateral Sclerosis

ALS is characterized by the progressive damage of motor neurons, causing loss of muscle control. Pathologically, the nuclear TAR DNA-binding protein 43 (*TDP-43*) was identified as a key component of the insoluble and ubiquitinated inclusions in ALS patients' brains [58,59]. *TDP-43* protein deposition in cytoplasm occurs concomitantly with the depletion of its native form from the nucleus [58]. The cytosolic aggregates are known to be toxic. In addition, they can recruit nuclear *TDP-43* and thus contribute to nuclear loss-of-function. As a consequence of the combination of the nuclear loss-of-function and cytosolic gain-of-function of *TDP-43*, motor neurons gradually degenerate in the brain and the spinal cord of patients with ALS. The accumulation of cytosolic *TDP-43* is turned over mainly by UPS even though both degradation pathways—UPS and the autophagy–lysosomal system—are active. The crosstalk exists between the two clearance systems [60], and the inhibition of one clearance pathway renders the remaining one more effective [61]. Furthermore, many mutations associated with ALS affect genes involved in UPS or autophagy-mediated degradation [40].

The ubiquitinated inclusions of *TDP-43* are the major features of pathological *TDP-43*. The E3 ubiquitin ligase (Parkin) ubiquitinates *TDP-43* via the ubiquitin lysines, K-48 and K-63 [62]. While K-48-linked polyubiquitin chains of *TDP-43* are degraded by UPS, K-63-linked polyubiquitin chains of *TDP-43* undergo autophagic removal. As suggested by recent data [63], autophagy can have a dual role in *TDP-43*-associated toxicity; it can either accelerate or slow down the disease progression. The vacuolar fusion machinery and the endo-lysosomal pathways are essential for the *TDP-43* clearance and cell survival. Defective endocytosis caused by abnormal levels of *TDP-43* has been detected in the frontal cortex tissue of an ALS patient [64]. Impaired endocytosis leads to an increase in *TDP-43* aggregation, whereas enhancing endocytosis can reverse *TDP-43* toxicity and spare motor neurons [64].

ALS patients with mutations in superoxide dismutase 1 (*SOD1*) or RNA-binding protein *FUS* (*FUS*) are negative for ubiquitinated inclusions of *TDP-43* but immunoreactive for mutant aggregated Cu/Zn *SOD1* and fused in sarcoma protein (*FUS*), respectively [65,66]. Likewise, *TDP-43*, mutant *FUS* demonstrates abnormal cytoplasmic redistribution and aggregation [65]. In *C9orf72*-related ALS, *TDP-43* proteinopathy is present, but additional inclusions devoid of *TDP-43* are p62/sequestosome-1 and ubiquitin-positive [67].

As already mentioned, *PDI* assists protein refolding in PD. In ALS, *PDI* has been reported to be upregulated in the spinal cords of sporadic ALS patients [68]. Furthermore, *PDI* co-localizes together with *TDP-43* [69] and *SOD1* [68]. *PDI* is usually seen as a beneficial molecule. Nevertheless, recent studies have demonstrated that misfolded protein accumulation increases *PDI* levels, promoting the cell death cascade [34,70]. Concomitantly with these findings, our lab has shown that UPR may lead to the activation of *PDI*-dependent NADPH oxidase (*NOX*) and thus contribute to neurotoxicity in ALS [71]. The accumulated mutant *SOD1* can also impair the ERAD machinery by interacting with ERAD components and, therefore, induce ER stress by altering protein trafficking [72]. ER stress can also be induced by the interaction of ALS-linked vesicle-associated membrane protein (*VAMPB*) variant

with either IRE1 $\alpha$ /XBP1 [73,74] or activating transcription factor 6 (ATF6) [75]. Both IRE1 $\alpha$ /XBP1 and ATF6 are ER stress sensor proteins, and their activities are reduced upon the interaction of VAP protein with the ER stress signaling system.

## 2. Immune Responses Induced by Dysfunctional Proteostasis in Neurodegenerative Diseases

The cellular stress response is a major regulator of the proteostasis network in various scenarios of induced imbalance in proteostasis. A growing body of evidence indicates that immune reactions are induced by proteostatic stress, and excessive inflammation may contribute to dysfunctional proteostasis [76]. Here, we review the interplay between the immune response and proteostasis, particularly in the context of neurodegenerative diseases.

Tight crosstalk between ER stress and immune responses has been demonstrated in several studies. First of all, immunogenic lipids are produced upon ER stress in antigen-presenting cells (APC) that cause the activation of natural killer T-cells (NKT cells) [77]. The indispensable factors here are UPR mediators, IRE1 $\alpha$ , and protein kinase R-like ER kinase (PERK). Secondly, ER stress may trigger an acute inflammatory response through regulated intramembrane proteolysis of ER membrane-anchored transcription factor cyclic adenosine monophosphate-responsive element-binding protein H (CREBH), which is required for the activation of acute-phase response genes [78]. Moreover, a key regulator of the inflammatory response, nuclear factor kappa-light-chain-enhancer of activated B cells (NF- $\kappa$ B), becomes activated upon ER stress through the interaction of IRE1 $\alpha$  with TNF receptor associated factor 2 (TRAF2) [79,80]. In parallel, the ER stress-induced PERK-translation initiation factor 2 $\alpha$  (eIF2 $\alpha$ ) signaling pathway suppresses protein synthesis, which results in an increased ratio of NF- $\kappa$ B to I $\kappa$ B (inhibitor of nuclear factor kappa B) and the promotion of NF- $\kappa$ B-dependent transcription [81]. On the other hand, dysfunctional proteostasis affects cells involved in both innate and adaptive immunity. The resulting misfolded protein accumulation may promote increased pro-inflammatory cytokine production [82] as well as contribute to the development of immune senescence [83].

### 2.1. Immune Response in Alzheimer's Disease

In AD, the hallmark of dysfunctional extracellular proteostasis is A $\beta$  deposition. The A $\beta$  plaques cause microglial inflammatory activation, migration, and phagocytosis [84,85]. While the primary immune response results in the clearance of A $\beta$ , sustained microglial activation produces reactive microgliosis, causing the exacerbation of AD pathology. This is associated with the decreased microglial capability to phagocytose A $\beta$  and pro-inflammatory cytokine release [86]. Another hallmark of AD pathology, tauopathy, has been demonstrated to spread between the brain cells by direct secretion, ectosomal, and exosomal mechanisms [87]. In tauopathy, a key role is played by microglia, which may propagate tau-related pathology through exosome release [88].

Among multiple factors supporting microglial fitness to maintain extracellular proteostasis, a remarkable role is played by the triggering receptor expressed on myeloid cell 2 (TREM2). TREM2 signaling is essential for microglial activation and survival, particularly for A $\beta$  deposition determined responses [89]. Recently, a link between TREM2 signaling and microglia metabolic activity relying on mammalian target of rapamycin (mTOR) signaling was described, indicating the importance of balanced energy metabolism in proper microglial function.

### 2.2. Immune Response in Parkinson's Disease

Alpha-SYN mediated neuroinflammation is evident in PD neurodegeneration [90]. The formation of  $\alpha$ -SYN fibrils that is facilitated by mutations results in the deposition of protein inclusions and consecutive microglial activation [91]. Remarkably, the inoculation of preformed  $\alpha$ -SYN fibrils leads to LB pathology due to spreading through intercellular transmission [92]. The fibrillar form  $\alpha$ -SYN that is produced and released by neuronal cells binds Toll-like receptor 2 (TLR2) and activates microglial inflammatory responses [93], leading to neurotoxicity. Besides activated TLR2-induced inflammation, activation of the NLR family pyrin domain containing 3 (NLRP3) has been demonstrated to result in

the formation of inflammasome [94]. Altogether, these findings suggest that non-cell-autonomous neurotoxic effects of  $\alpha$ -SYN are mediated primarily by glial pro-inflammatory activation [95].

It has also been demonstrated that  $\alpha$ -SYN-induced phagocytic activity releases pro-inflammatory cytokines and ROS in microglia by activating TLR4 receptor [96]. However, astrocytic  $\alpha$ -SYN uptake was not dependent on TLR4 expression. Pro-inflammatory factors released from activated microglia induce also neuronal major histocompatibility complex class-I (MHC-I) expression, which may trigger the antigenic response and DA neuron death mediated by cytotoxic T cells [97].

### 2.3. Immune Response in Amyotrophic Lateral Sclerosis

In the mutant SOD1-expressing rodent models of ALS and in patients with sporadic ALS, UPR-related molecules such as stress sensor kinases, chaperones, and apoptotic mediators are induced at disease onset and end stage, which indicates the presence of disturbed proteostasis in the disease [71].

In an ALS rat model, SOD1 carrying G93A mutation is destabilized and aggregates, causing mitochondrial dysfunction and increased ROS production. The disulfide-reduced SOD1 is increased with the course of the disease. In contrast, the ER-resident chaperone PDI, which is capable of re-oxidizing disulfide bonds between cysteine residues of SOD1, increases upon progression of the disease [98].

Importantly, the early upregulation of PDI in the microglia of transgenic mutant SOD1 mice coincides with the expression of a UPR marker: growth arrest and DNA damage-inducible protein (GADD34) in the spinal cord glia [72]. The impact of the UPR-induced upregulation of PDI during the ER stress still remains a controversial matter, since, besides the adaptive function of increased protein refolding, PDI may also generate the production of ROS through NOX activation or contribute to hydroperoxide generation [34,99]. The ROS species released in turn provide support for the neurotoxic and inflammatory activation of microglia.

### 2.4. NLRP3 Inflammasome in Neurodegenerative Diseases

Inflammasomes are multiprotein complexes normally located in the CNS [100]. They are expressed in neurons, microglia, astrocytes, macrophages, and endothelial cells. Inflammasomes are part of the innate immune system and recognize pathogen-associated molecular patterns (PAMPs) and danger-associated molecular patterns (DAMPs) [101]. The assembly of the inflammasome results in the activation of caspase-1 and the subsequent release of pro-inflammatory cytokines IL-1 $\beta$  and IL-18 as well as the induction of pyroptosis [102]. The activation of inflammasomes has been reported in several neurodegenerative diseases, especially the nucleotide-binding oligomerization domain leucine-rich repeat and pyrin domaincontaining (NLRP) 3 inflammasome is now widely investigated. Activation of the NLRP3 inflammasome is a two-step process. The first step primes the inflammasome and requires activation of the the NF- $\kappa$ B pathway to upregulate the expression of NLRP3, caspase-1, and prointerleukin-1 $\beta$  (pro-IL-1 $\beta$ ) through the stimulation of TLRs [103,104]. After priming, several stimuli such as ionic flux, extracellular ATP, ROS, and lysosomal rupture can activate the NLRP3 complex [105].

The role and activation of inflammasomes have been studied in several neurodegenerative diseases, including AD, PD, and ALS. Human and animal studies have shown that abnormal protein aggregation of A $\beta$ ,  $\alpha$ -SYN, or SOD1 can activate microglia, induce IL-1 $\beta$  release, and activate the NLRP3 pathway (reviewed in [106,107]). In AD, A $\beta$  can activate the NLRP3 in microglia to produce IL-1 $\beta$  through TLR4 [108]. Additionally, higher levels of NLRP3, caspase-1, IL-1 $\beta$ , and IL-18 were detected in peripheral blood mononuclear cells (PBMCs) from AD patients [109]. In AD transgenic mice, A $\beta$  treatment induced a high level of caspase-1 and IL-1 $\beta$  in the brain tissue [110–112], whereas the inhibition of either NLRP3 or caspase-1 in an AD mouse model increased the clearance of A $\beta$  by microglia, reduced the A $\beta$  deposition, and improved cognitive impairment [112,113]. The dysfunction of the blood–brain barrier and the release of pro-inflammatory cytokines from endothelial cells are linked to AD. Recently, a study showed that A $\beta$  can activate the NLRP3 inflammasome and the



production of IL-1 $\beta$  and IL-18 in endothelial cells [114]. Furthermore, inhibition of the NLRP3 increased the endothelial properties and survival, suggesting a role of NLRP3 in blood–brain barrier dysfunction in AD.

NLRP3, caspase-1, and IL-1 $\beta$  were increased in PD patients' PBMCs and plasma when compared to age-matched healthy controls [115–117]. In addition, increased levels of IL-1 $\beta$  and IL-18 levels have been detected in the cerebrospinal fluid of PD patients [118]. High mRNA and protein expression levels of NLRP3 inflammasome components were found in several PD animal models [119,120]. Several studies have now linked the  $\alpha$ -SYN and NLRP3 inflammasome activation in PD. Increased plasma levels of  $\alpha$ -SYN and IL-1 $\beta$  in PD patients have been shown to correlate with the motor severity in PD patients [115]. Moreover, the fibrillar form of  $\alpha$ -SYN induced NLRP3–caspase-1 complex activation and the release of IL-1 $\beta$  in PBMCs, monocytes, microglia, and astrocytes [117,121]. Recently, the role of  $\alpha$ -SYN and NLRP3 activation in astrocytes was demonstrated [121]. Mouse astrocytes treated with oligomerized  $\alpha$ -SYN increased the expression levels of NLRP3, caspase-1, and IL-1 $\beta$ , indicating an important role for astrocytes in NLRP3-related neuroinflammation in PD.

The activation of the inflammasome and upregulation of NLRP3 and its components, caspase-1 and IL-1 $\beta$ , have been reported in ALS patients and ALS mouse models, suggesting a role of inflammasomes in ALS [122–125]. In the mouse SOD1G93A model, higher levels of caspase-1 and IL-1 $\beta$  in microglia contributed to the disease progression [126]. Additionally, lipopolysaccharide (LPS) can activate caspase-1 and lead to an increased release of IL-1 $\beta$  in SOD1G93A mice [126]. In addition to microglia, studies suggest a critical role of astrocyte NLRP3 inflammasomes in ALS. Increased levels of NLRP3, ASC, caspase-1, and IL-18 were found in post-mortem spinal cord tissue, and astrocytes were identified as the main NLRP3 inflammasome-expressing cell type [127].

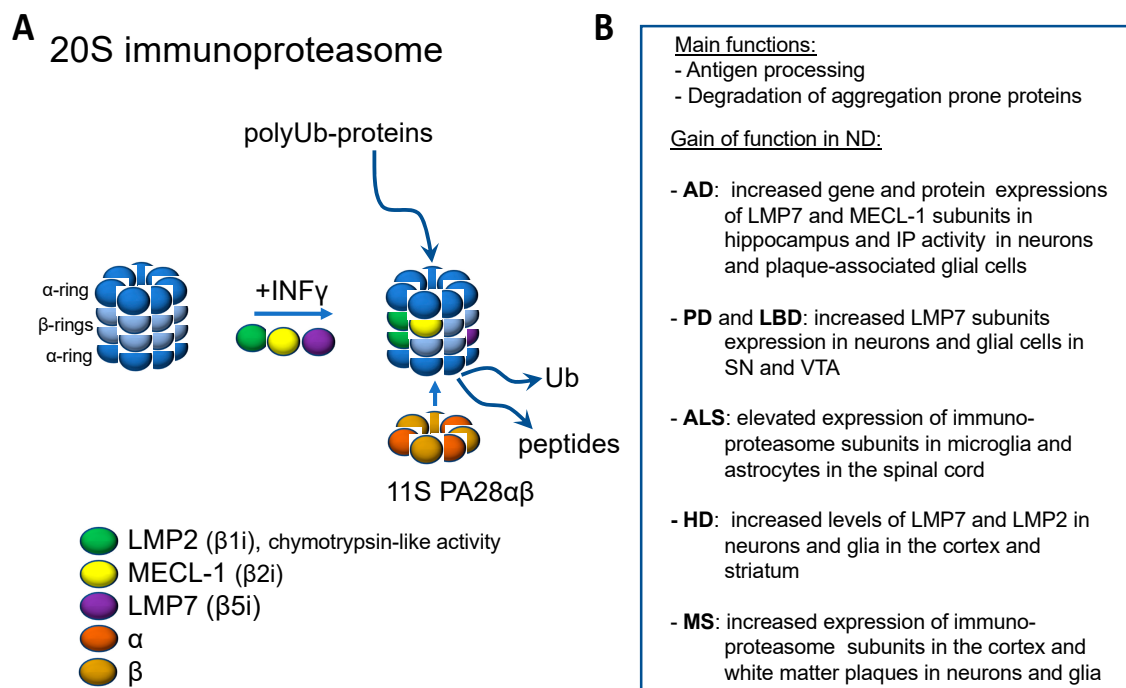
### 3. Immunoproteasome and Neuroinflammation in Neurodegenerative Diseases

#### 3.1. Structure and Function of Immunoproteasome

Proper protein turnover, including protein translation and degradation, is crucial for cell signaling and especially for removing damaged, misfolded, or oxidized proteins. The autophagy–lysosomal pathway and UPS degrade proteins. The degradation of proteins through UPS is divided into two distinct steps. In the first step, the target protein is conjugated to multiple ubiquitin units by the coordinated activation of ubiquitin-activating (E1), conjugating (E2), and ligase (E3) enzymes, in an ATP-dependent manner. In the second part, the 26S proteasome complex recognizes the polyubiquitin chain and degrades the protein into peptides. The recognition is carried out by the regulatory 19S complex, which also aids the substrate entry to the proteolytic site by binding, deubiquitylating, and unfolding ubiquitylated proteins [128]. The catalytic 20S complex is hollow, cylindrical, and composed of two outer and inner rings [129]. The outer rings are composed of seven  $\alpha$ -subunits that bind and aid the substrate translocation into the catalytic core. The proteolytic site is located in the inner rings. The standard proteasome has seven unique  $\beta$ -subunits, and three of these have catalytic activity. They include  $\beta$ 1,  $\beta$ 2, and  $\beta$ 5 subunits with caspase-like, trypsin-like, or chymotrypsin-like activity, respectively. In addition to the 19S complex, other regulatory proteasome activators (PA) exist, including 11S (PA28), PA31, and PA200, which can alter and enhance the proteasome function.

Interferon  $\gamma$  (INF $\gamma$ ) or environmental factors, such as conditions that trigger oxidized stress, can induce an alternative assembly of the 20S proteasome, which is commonly named immunoproteasome (IP; Figure 2A) [130]. The standard subunits  $\beta$ 1,  $\beta$ 2, and  $\beta$ 5 are replaced by the inducible subunits LMP2 (i $\beta$ 1), MECL-1 (i $\beta$ 2), and LMP7 (i $\beta$ 5). The catalytic activities of MECL-1 and LMP7 are similar to  $\beta$ 2 and  $\beta$ 5 subunits in the standard proteasome. However, the LMP2 subunit exhibits a chymotrypsin-like activity instead of the caspase activity in the standard  $\beta$ 1 subunit [131]. The standard proteasome is expressed constitutively in nearly all mammalian cells, whereas the IP expression is low at basal conditions, except in the immune cells. However, INF $\gamma$  or environmental

factors can drastically increase the assembly of IP also in nonimmune cells. Additionally,  $\text{INF}\gamma$  can induce  $\text{PA28}\alpha\beta$  expression, which increases the activities of the beta subunits.



**Figure 2.** Immunoproteasome and its function in neurodegenerative diseases. (A) Immunoproteasome is formed from the constitutive proteasome upon inflammatory stimuli by the incorporation of specific  $\beta$  subunits and the co-production of proteasomal activator 11S  $\text{PA28}\alpha\beta$ . (B) Evidence for the increased function of immunoproteasome in neurodegenerative diseases.

The most studied function of the IP is related to the immune function and antigen presentation. IP is capable of generating antigen peptides, which are first complexed to MHC-I in the ER and then exposed on the plasma membrane to be presented to  $\text{CD8}^+$  T lymphocytes [132]. The changes in the  $\beta$  subunits in the IP lead to increased overall chymotrypsin activity, which aids the generation of antigen peptides with hydrophobic C-termini and improves their fit into the groove of MHC-I molecules [133–135]. This increases the repertoire of peptides generated for MHC presentation. The assembly of IP in response to  $\text{INF}\gamma$  is faster than in a standard proteasome, which helps expanding the peptide pool needed for efficient immune responses [136]. The halftime of IP is shorter, which prevents persistent immune activation.

In addition to the role in immune functions, the IP has a role in responding to various stress factors. During oxidative stress, the IP is efficient, and in some cases, it is even better in selectively degrading oxidized proteins than the standard proteasome [137,138]. Both the selectivity and activity of the IP can be increased by binding with the 11S ( $\text{PA28}$ ) regulator. Increased levels of  $\text{H}_2\text{O}_2$  cause protein oxidation, while increased levels of  $\text{H}_2\text{O}_2$  cause protein oxidation, but the IP and the 11S regulator together with the standard proteasome help maintain the homeostasis during  $\text{H}_2\text{O}_2$ -induced oxidative stress. Even low levels of  $\text{H}_2\text{O}_2$  without any protein damage have been shown to increase the synthesis of IP, 11S, and standard proteasome [137–141]. This may help the cells to preadapt to a potential increase in oxidative stress and be more prepared to degrade higher levels of oxidized proteins. A low level of nitric oxide is an essential factor in regulating the vascular tone, but, again, high concentrations can cause oxidative damage [142]. High levels of nitric oxide upregulate IP and help cells cope with increased protein damage [143–145]. Cells that are naturally exposed to higher levels of nitric oxide, including endothelial cells, express correspondingly higher levels of IP. IP's expression and activity are essential for cell survival in the environment with high NO levels.

### 3.2. Immunoproteasome Function in CNS

Previously, the CNS has been seen as an immune-privileged area because of the immunosuppressive environment and the absence of dendritic cells. However, currently, the evidence supports the idea that the CNS is not isolated but is actively communicating with the immune system. Nowadays, neuroinflammation is seen as a complex interplay between the CNS and systemic cells. In the CNS, neurons and glia (microglia, astrocytes, and oligodendrocytes) continuously express low amounts of IP, which suggests that IP has a role in maintaining homeostasis in the CNS [146,147]. In addition, pro-inflammatory cytokines, including  $\text{INF}\gamma$  and  $\text{TNF}\alpha$ , or oxidative stress generally induce the expression of the IP and the disassembly of the standard proteasome [148–151]. This is thought to enhance protein degradation and allow the cells to cope with the protein overload. The IP can degrade aggregation-prone proteins at the same or even higher rate and efficacy than the standard proteasome [152,153]. The expression of MHC-I in the CNS has functions beyond antigen presentation. MHC-I expression in neurons has been linked to early neuronal development, synaptic plasticity, axonal regeneration, memory, and reward [154–157]. Nevertheless, neurons and glia can act as professional APC and thereby prolong inflammation/oxidized stress. Consequently, the increased IP may make the CNS cells more vulnerable to auto-immune damage [147].

### 3.3. The Role of Immunoproteasome in Neurodegenerative Diseases

Several studies have shown increased IP activity in various neurodegenerative diseases, including AD, PD, ALS, HD, and MS (Figure 2B). The increased expression and activity of the IP might be beneficial in the early stages of neurodegeneration by compensating for the protein overload and decreased function of the standard proteasome. However, the persistent overactivity of the IP can enhance the neuroinflammation and lead to neuronal cell death.

#### 3.3.1. Immunoproteasome in Alzheimer Disease

Several human post-mortem studies and experimental models have shown changes in the IP function and activity in AD. Decreased gene expression of standard  $\beta 5$  subunit and increased gene and protein expressions of LMP7 ( $\beta 5i$ ) and MECL-1 subunits have been observed in the hippocampus of AD brains [158,159]. In addition, the activities of the IP subunits LMP7 ( $\beta 5i$ ), MECL-1 ( $\beta 2i$ ), and LMP2 ( $\beta 1i$ ) are increased in the hippocampus of AD brains, which also correlates with the tau pathology [158]. Overall, the expression of IP in AD patients has been reported to be elevated compared to non-demented elderly, while in the young brain, the expression may be barely detectable [160].

Increased IP expression has also been detected in several AD animal models. The IP activity was primarily raised in the AD mice cortex and amplified gene and protein expressions in neurons and glia surrounding the amyloid-beta plaques [158]. Decreased levels of standard  $\beta 5$  subunit and increased LMP2 ( $\beta 1i$ ) and MECL-1 ( $\beta 2i$ ) levels and trypsin activity were detected in AD mice [161]. The increased gene and protein expressions of LMP7 ( $\beta 5i$ ) and LMP2 ( $\beta 1i$ ) subunits also correlated with age and amyloid-beta pathology in AD mice [162].

#### 3.3.2. Immunoproteasome in Parkinson's Disease

Increased levels and activity of LMP7 ( $\beta 5i$ ) subunits were found from post-mortem brains of PD and dementia with LB patients. Notably, the increase was detected in both neurons and glial cells in the substantia nigra area. In contrast, the increase was seen only in glial cells in the less vulnerable ventral tegmental area [163]. Increased activity of the LMP7 ( $\beta 5i$ ) subunit was also demonstrated in an experimental model using 6-hydroxydopamine (6-OHDA). The neurotoxin, 6-OHDA, upregulated the LMP7 subunit in DA neurons, both in vitro and in vivo studies [164].

### 3.3.3. Immunoproteasome in Amyotrophic Lateral Sclerosis

Although evidence of the relation between the IP and ALS is missing from human studies, several experimental animal models of ALS have shown increased IP function. Proteasome activity was raised in the spinal cord of SOD1 G93A transgenic mice. The standard proteasome subunits 7 and 5 were expressed constitutively, but a marked increase in IP subunits LMP2 ( $\beta$ 1i), MECL-1 ( $\beta$ 2i), and LMP7 ( $\beta$ 5i) were found. Additionally, the induction of IP subunits occurred mainly in microglia and astrocytes [165]. Other studies have also shown similar induction of the IP in the spinal cord with SOD1 G93A transgenic mice, although the standard proteasome activity was found decreased. [166,167]. A study by Puttapparthi et al. showed increased proteasome activity and induction of the IP in the spinal cord of SOD1 G93A transgenic mice. Additionally, mice lacking the LMP2 (G93A SOD1/LMP2 $^{-/-}$ ) subunit did not exhibit a change in the motor function decline, suggesting that IP function does not alter the SOD1-induced behavioral phenotype [168].

### 3.3.4. Immunoproteasome in Huntington Disease

Increased levels of LMP7 ( $\beta$ 5i) and LMP2 ( $\beta$ 1i) were detected in the cortex and the striatum of HD patients' brain compared to age-matched controls [169]. The increase was related to decreased levels of the corresponding subunits of the standard proteasome. Moreover, the induction of the IP subunits in neurons was associated with neurodegeneration. Similarly, the IP subunits LMP7 ( $\beta$ 5i) and LMP2 ( $\beta$ 1i) were increased in neurons and glia in the striatum and cortex of HD mice [169].

### 3.3.5. Immunoproteasome in Multiple Sclerosis

The IP and PA28ab regulator's expression was detected in MS patients but was not seen in young controls. In addition, LMP2 ( $\beta$ 1i) and PA28 $\alpha\beta$  were detected in the cortex and the white matter plaques in neurons and glia [170]. In the experimental model of MS, MOG-EAE mice (myelin oligodendrocyte glycoprotein experimental autoimmune encephalomyelitis), overall peptidase proteasome activity during the acute phase of EAE correlated with increased levels of LMP2 ( $\beta$ 1i), MECL-1 ( $\beta$ 2i), and LMP7 ( $\beta$ 5i) subunits in neurons and glia. These findings were opposite in the chronic phase [171,172]. Similarly, the amount and activity of the IP subunits were increased in MOG-EAE rats [173]. In myelin Basic Peptide (MBP)-EAE mice, LMP2 ( $\beta$ 1i) and LMP7 ( $\beta$ 5i) subunits were increased, and LMP2 ( $\beta$ 1i) was dominantly expressed in oligodendrocytes, whereas LMP7 ( $\beta$ 5i) was mainly in brain-infiltrating lymphocytes [174].

## 3.4. Immunoproteasome Inhibitors in Neurodegenerative Diseases

The increasing evidence of the role of IP in inflammation and neurodegenerative diseases has raised the interest to target the IP for therapy. Several IP inhibitors have been developed for autoimmune diseases and some cancers [175]. Currently, KZR-616 inhibitor from Kezar Life Sciences is being tested in a clinical trial for Systemic Lupus Erythematosus with and without Nephritis (ClinicalTrials.gov Identifier: NCT03393013). While the IP inhibitors have beneficial effects in immune-related diseases, the preclinical results from neurodegenerative diseases have been contradictory. The impact of IP inhibition seems to be disease and context-dependent. While for AD and MS, the inhibition could be beneficial based on the current findings, for PD and ALS, the obtained results from animal models showed the opposite.

In the AD mice models, IP inhibition improved mainly cognitive functions. Transgenic APP-PS1 mice crossed with mice deficient for the IP subunit LMP7 ( $\beta$ 5i) resulted in impaired IP function. These LMP7 ( $\beta$ 5i)-deficient mice did not show significant A $\beta$  pathology; however, microglia showed altered cytokine responses. The altered cytokine profile was associated with improved A $\beta$ -associated cognitive deficits typically observed in APP-PS1 mice [165]. In another study, dual inhibition of IP subunits LMP2 ( $\beta$ 1i) and cP catalytic subunit Y with YU102 ameliorated the cognitive effects in the

AD mouse model [176]. The inhibition did not affect the A $\beta$  deposition but suppressed the cytokine secretion from microglia cells.

In different experimental models of MS, proteasome inhibitors proved to be efficient to some extent [173,177]. The impact of IP inhibitor ONX 0914 was studied in two different mouse models of MS. ONX 0914 attenuated the disease progression in MOG<sub>35–55</sub> and PLP<sub>139–151</sub>-induced-EAE [178]. The isolation of lymphocytes from the spinal cord revealed a substantial reduction of cytokine-producing CD4 cells in treated mice. These results suggest that IP inhibitors may have a potential for treating MS patients.

However, the fact that the IP inhibition could also have adverse effects was demonstrated in PD and ALS rodent models. While 6-OHDA upregulated the LMP7 ( $\beta$ 5i) subunit in DA neurons, inhibition of the IP increased 6-OHDA-induced neurotoxicity both in vitro and in vivo [164]. A similar effect was seen in SH-SY5Y cells exposed to rotenone [179]. Knockdown of the *ib1* subunit resulted in increased  $\alpha$ -SYN accumulation, the degradation of tyrosine hydroxylase, the release of ROS, an increased level of malondialdehyde, and a decreased level of glutathione, and it also promoted apoptosis in SH-SY5Y cells after rotenone treatment. On the other hand, Oxyphylla A, the LMP7 ( $\beta$ 5i) subunit activator, promoted  $\alpha$ -SYN degradation in the cellular PD model [180]. Altogether, these results demonstrate the potential neuroprotective role of the IP in PD.

Our laboratory studies have shown a potential neuroprotective effect of the IP in ALS when treating G93A-SOD1 transgenic mice with pyrrolidine dithiocarbamate (PDTC), which is an inhibitor of NF- $\kappa$ B [181]. The PDTC treatment completely blocked the IP expression and significantly decreased the survival of the mice. The exposure did not affect the standard proteasome. These results suggested that the IP may help the nervous system to cope with the harmful effects of SOD1-G93A mutation.

#### 4. Conclusions

Cellular viability and functions are dependent on not only adequate protein production but also an efficient degradation of excess, damaged, and misfolded proteins. Thus, disturbances in cellular protein homeostasis or proteostasis can be detrimental to the cell. Here, we have reviewed the current research related to the relationship between proteostasis disturbances and inflammatory response in neurodegenerative diseases. A growing body of evidence shows that protein misfolding, aggregation, and aberrant modifications can lead to excessive immune responses causing neuroinflammation, which is associated with neurodegenerative diseases.

On the other hand, reactive glial cells in the CNS play an important role in deleterious non-cell-autonomous mechanisms leading to the loss of proteostasis. This vicious feed-forward loop may have a critical impact on neuronal viability. Particularly, failures in the clearance of aggregated proteins have been associated with aging and neurodegenerative diseases such as AD, PD, and ALS, especially in gene mutations connected with cellular proteostasis. Furthermore, excessive immune responses that initiate inflammation and lead to dysfunctional proteostasis are evident in AD, PD, and ALS. Further elucidation of the individual steps of proteostasis and inflammation, especially in human-based models, will provide a better understanding of the cellular processes and open a window/the way for the development of novel pharmacological strategies for neurodegenerative diseases.

**Funding:** This work was funded through grants to S.L. and J.K. from the Finnish Parkinson Foundation (S.L.), Joint Programme for Neurodegenerative Disease (JPND) research co-funded by the EU Research, Innovation Programme Horizon 2020 through the ERA-NET co-fund scheme (J.K.) and by The Olav Thon Foundation (J.K.).

**Conflicts of Interest:** The authors declare no conflict of interest. The funders had no role in the design of the study; in the collection, analyses, or interpretation of data; in the writing of the manuscript, or in the decision to publish the results.

## References

1. Sofroniew, M.V. Astrocyte barriers to neurotoxic inflammation. *Nat. Rev. Neurosci.* **2015**, *16*, 249–263. [[CrossRef](#)] [[PubMed](#)]
2. Prinz, M.; Priller, J. Microglia and brain macrophages in the molecular age: From origin to neuropsychiatric disease. *Nat. Rev. Neurosci.* **2014**, *15*, 300–312. [[CrossRef](#)] [[PubMed](#)]
3. DiSabato, D.J.; Quan, N.; Godbout, J.P. Neuroinflammation: The devil is in the details. *J. Neurochem.* **2016**, *139*, 136–153. [[CrossRef](#)] [[PubMed](#)]
4. Lee, K.M.; MacLean, A.G. New advances on glial activation in health and disease. *World J. Virol.* **2015**, *4*, 42–55. [[CrossRef](#)]
5. Mymrikov, E.V.; Daake, M.; Richter, B.; Haslbeck, M.; Buchner, J. The Chaperone Activity and Substrate Spectrum of Human Small Heat Shock Proteins. *J. Biol. Chem.* **2017**, *292*, 672–684. [[CrossRef](#)]
6. Labbadia, J.; Morimoto, R.I. The Biology of Proteostasis in Aging and Disease. *Annu. Rev. Biochem.* **2015**, *84*, 435–464. [[CrossRef](#)]
7. Pickart, C.M. Mechanisms underlying ubiquitination. *Annu. Rev. Biochem.* **2001**, *70*, 503–533. [[CrossRef](#)]
8. Glickman, M.H.; Ciechanover, A. The ubiquitin-proteasome proteolytic pathway: Destruction for the sake of construction. *Physiol. Rev.* **2002**, *82*, 373–428. [[CrossRef](#)]
9. Parzych, K.R.; Klionsky, D.J. An overview of autophagy: Morphology, mechanism, and regulation. *Antioxid. Redox Signal.* **2014**, *20*, 460–473. [[CrossRef](#)]
10. Chelombitko, M.A. Role of Reactive Oxygen Species in Inflammation: A Minireview. *Mosc. Univ. Biol. Sci. Bull.* **2018**, *73*, 199–202. [[CrossRef](#)]
11. Hsieh, H.-L.; Yang, C.-M. Role of Redox Signaling in Neuroinflammation and Neurodegenerative Diseases. *BioMed Res. Int.* **2013**. [[CrossRef](#)] [[PubMed](#)]
12. Haddad, J.J. Oxygen-sensitive pro-inflammatory cytokines, apoptosis signaling and redox-responsive transcription factors in development and pathophysiology. *Cytokines Cell. Mol. Ther.* **2002**, *7*, 1–14. [[CrossRef](#)] [[PubMed](#)]
13. Markesbery, W.R.; Lovell, M.A. Four-hydroxynonenal, a product of lipid peroxidation, is increased in the brain in Alzheimer's disease. *Neurobiol. Aging* **1998**, *19*, 33–36. [[CrossRef](#)]
14. Sultana, R.; Boyd-Kimball, D.; Cai, J.; Pierce, W.M.; Klein, J.B.; Merchant, M.; Butterfield, D.A. Proteomics analysis of the Alzheimer's disease hippocampal proteome. *J. Alzheimer's Dis.* **2007**, *11*, 153–164. [[CrossRef](#)] [[PubMed](#)]
15. Sultana, R.; Perluigi, M.; Butterfield, D.A. Lipid peroxidation triggers neurodegeneration: A redox proteomics view into the Alzheimer disease brain. *Free Radic. Biol. Med.* **2013**, *62*, 157–169. [[CrossRef](#)] [[PubMed](#)]
16. Xiang, W.; Schlachetzki, J.C.M.; Helling, S.; Bussmann, J.C.; Berlinghof, M.; Schäffer, T.E.; Marcus, K.; Winkler, J.; Klucken, J.; Becker, C.-M. Oxidative stress-induced posttranslational modifications of alpha-synuclein: Specific modification of alpha-synuclein by 4-hydroxy-2-nonenal increases dopaminergic toxicity. *Mol. Cell. Neurosci.* **2013**, *54*, 71–83. [[CrossRef](#)]
17. Anderson, G.; Maes, M. Neurodegeneration in Parkinson's disease: Interactions of oxidative stress, tryptophan catabolites and depression with mitochondria and sirtuins. *Mol. Neurobiol.* **2014**, *49*, 771–783. [[CrossRef](#)]
18. Morel, P.; Tallineau, C.; Pontcharraud, R.; Piriou, A.; Huguet, F. Effects of 4-hydroxynonenal, a lipid peroxidation product, on dopamine transport and Na<sup>+</sup>/K<sup>+</sup> ATPase in rat striatal synaptosomes. *Neurochem. Int.* **1998**, *33*, 531–540. [[CrossRef](#)]
19. Zarkovic, K. 4-hydroxynonenal and neurodegenerative diseases. *Mol. Asp. Med.* **2003**, *24*, 293–303. [[CrossRef](#)]
20. Lee, J.; Kosaras, B.; Del Signore, S.J.; Cormier, K.; McKee, A.; Ratan, R.R.; Kowall, N.W.; Ryu, H. Modulation of lipid peroxidation and mitochondrial function improves neuropathology in Huntington's disease mice. *Acta Neuropathol.* **2011**, *121*, 487–498. [[CrossRef](#)]
21. Vitek, M.P.; Bhattacharya, K.; Glendening, J.M.; Stopa, E.; Vlassara, H.; Bucala, R.; Manogue, K.; Cerami, A. Advanced glycation end products contribute to amyloidosis in Alzheimer disease. *Proc. Natl. Acad. Sci. USA* **1994**, *91*, 4766–4770. [[CrossRef](#)] [[PubMed](#)]

22. Guerrero, E.; Vasudevaraju, P.; Hegde, M.L.; Britton, G.B.; Rao, K.S. Recent advances in  $\alpha$ -synuclein functions, advanced glycation, and toxicity: Implications for Parkinson's disease. *Mol. Neurobiol.* **2013**, *47*, 525–536. [[CrossRef](#)] [[PubMed](#)]
23. Padmaraju, V.; Bhaskar, J.J.; Prasada Rao, U.J.S.; Salimath, P.V.; Rao, K.S. Role of advanced glycation on aggregation and DNA binding properties of  $\alpha$ -synuclein. *J. Alzheimer's Dis.* **2011**, *24*, 211–221. [[CrossRef](#)] [[PubMed](#)]
24. Shibata, N.; Hirano, A.; Hedley-Whyte, E.T.; Dal Canto, M.C.; Nagai, R.; Uchida, K.; Horiuchi, S.; Kawaguchi, M.; Yamamoto, T.; Kobayashi, M. Selective formation of certain advanced glycation end products in spinal cord astrocytes of humans and mice with superoxide dismutase-1 mutation. *Acta Neuropathol.* **2002**, *104*, 171–178. [[CrossRef](#)] [[PubMed](#)]
25. Ischiropoulos, H.; Beckman, J.S. Oxidative stress and nitration in neurodegeneration: Cause, effect, or association? *J. Clin. Investig.* **2003**, *111*, 163–169. [[CrossRef](#)]
26. Jekabsone, A.; Neher, J.J.; Borutaite, V.; Brown, G.C. Nitric oxide from neuronal nitric oxide synthase sensitises neurons to hypoxia-induced death via competitive inhibition of cytochrome oxidase. *J. Neurochem.* **2007**, *103*, 346–356. [[CrossRef](#)]
27. Duncan, A.J.; Heales, S.J.R. Nitric oxide and neurological disorders. *Mol. Asp. Med.* **2005**, *26*, 67–96. [[CrossRef](#)]
28. Boll, M.-C.; Alcaraz-Zubeldia, M.; Montes, S.; Murillo-Bonilla, L.; Rios, C. Raised nitrate concentration and low SOD activity in the CSF of sporadic ALS patients. *Neurochem. Res.* **2003**, *28*, 699–703. [[CrossRef](#)]
29. Agar, J.; Durham, H. Relevance of oxidative injury in the pathogenesis of motor neuron diseases. *Amyotroph. Lateral Scler. Other Mot. Neuron Disord.* **2003**, *4*, 232–242. [[CrossRef](#)]
30. Kaufman, R.J. Stress signaling from the lumen of the endoplasmic reticulum: Coordination of gene transcriptional and translational controls. *Genes Dev.* **1999**, *13*, 1211–1233. [[CrossRef](#)]
31. Doyle, K.M.; Kennedy, D.; Gorman, A.M.; Gupta, S.; Healy, S.J.M.; Samali, A. Unfolded proteins and endoplasmic reticulum stress in neurodegenerative disorders. *J. Cell. Mol. Med.* **2011**, *15*, 2025–2039. [[CrossRef](#)] [[PubMed](#)]
32. Hetz, C.; Mollereau, B. Disturbance of endoplasmic reticulum proteostasis in neurodegenerative diseases. *Nat. Rev. Neurosci.* **2014**, *15*, 233–249. [[CrossRef](#)] [[PubMed](#)]
33. Cao, S.S.; Kaufman, R.J. Endoplasmic reticulum stress and oxidative stress in cell fate decision and human disease. *Antioxid. Redox Signal.* **2014**, *21*, 396–413. [[CrossRef](#)] [[PubMed](#)]
34. Lehtonen, Š.; Jaronen, M.; Vehviläinen, P.; Lakso, M.; Rudgalvyte, M.; Keksa-Goldsteine, V.; Wong, G.; Courtney, M.J.; Koistinaho, J.; Goldsteins, G. Inhibition of Excessive Oxidative Protein Folding Is Protective in MPP+ Toxicity-Induced Parkinson's Disease Models. *Antioxid. Redox Signal.* **2016**, *25*, 485–497. [[CrossRef](#)]
35. Hotamisligil, G.S. Endoplasmic reticulum stress and the inflammatory basis of metabolic disease. *Cell* **2010**, *140*, 900–917. [[CrossRef](#)]
36. Matus, S.; Glimcher, L.H.; Hetz, C. Protein folding stress in neurodegenerative diseases: A glimpse into the ER. *Curr. Opin. Cell Biol.* **2011**, *23*, 239–252. [[CrossRef](#)]
37. McGuckin, M.A.; Eri, R.D.; Das, I.; Lourie, R.; Florin, T.H. ER stress and the unfolded protein response in intestinal inflammation. *Am. J. Physiol. Gastrointest. Liver Physiol.* **2010**, *298*, G820–G832. [[CrossRef](#)]
38. Pivovarova, O.; Höhn, A.; Grune, T.; Pfeiffer, A.F.H.; Rudovich, N. Insulin-degrading enzyme: New therapeutic target for diabetes and Alzheimer's disease? *Ann. Med.* **2016**, *48*, 614–624. [[CrossRef](#)]
39. Eckman, E.A.; Reed, D.K.; Eckman, C.B. Degradation of the Alzheimer's Amyloid  $\beta$  Peptide by Endothelin-converting Enzyme. *J. Biol. Chem.* **2001**, *276*, 24540–24548. [[CrossRef](#)]
40. Cirulli, E.T.; Lasseigne, B.N.; Petrovski, S.; Sapp, P.C.; Dion, P.A.; Leblond, C.S.; Couthouis, J.; Lu, Y.-F.; Wang, Q.; Krueger, B.J.; et al. Exome sequencing in amyotrophic lateral sclerosis identifies risk genes and pathways. *Science* **2015**, *347*, 1436–1441. [[CrossRef](#)]
41. Zhu, B.; Jiang, L.; Huang, T.; Zhao, Y.; Liu, T.; Zhong, Y.; Li, X.; Campos, A.; Pomeroy, K.; Masliah, E.; et al. ER-associated degradation regulates Alzheimer's amyloid pathology and memory function by modulating  $\gamma$ -secretase activity. *Nat. Commun.* **2017**, *8*, 1472. [[CrossRef](#)] [[PubMed](#)]
42. Duran-Aniotz, C.; Cornejo, V.H.; Espinoza, S.; Ardiles, Á.O.; Medinas, D.B.; Salazar, C.; Foley, A.; Gajardo, I.; Thielen, P.; Iwawaki, T.; et al. IRE1 signaling exacerbates Alzheimer's disease pathogenesis. *Acta Neuropathol.* **2017**, *134*, 489–506. [[CrossRef](#)] [[PubMed](#)]

43. Katayama, T.; Imaizumi, K.; Sato, N.; Miyoshi, K.; Kudo, T.; Hitomi, J.; Morihara, T.; Yoneda, T.; Gomi, F.; Mori, Y.; et al. Presenilin-1 mutations downregulate the signalling pathway of the unfolded-protein response. *Nat. Cell Biol.* **1999**, *1*, 479–485. [[CrossRef](#)] [[PubMed](#)]
44. Niwa, M.; Sidrauski, C.; Kaufman, R.J.; Walter, P. A Role for Presenilin-1 in Nuclear Accumulation of Ire1 Fragments and Induction of the Mammalian Unfolded Protein Response. *Cell.* **1999**, *99*, 691–702. [[CrossRef](#)]
45. Abisambra, J.F.; Jinwal, U.K.; Blair, L.J.; O’Leary, J.C.; Li, Q.; Brady, S.; Wang, L.; Guidi, C.E.; Zhang, B.; Nordhues, B.A.; et al. Tau accumulation activates the unfolded protein response by impairing endoplasmic reticulum-associated degradation. *J. Neurosci.* **2013**, *33*, 9498–9507. [[CrossRef](#)]
46. Lindersson, E.; Beedholm, R.; Højrup, P.; Moos, T.; Gai, W.; Hendil, K.B.; Jensen, P.H. Proteasomal inhibition by alpha-synuclein filaments and oligomers. *J. Biol. Chem.* **2004**, *279*, 12924–12934. [[CrossRef](#)]
47. Malkus, K.A.; Ischiropoulos, H. Regional deficiencies in chaperone-mediated autophagy underlie  $\alpha$ -synuclein aggregation and neurodegeneration. *Neurobiol. Dis.* **2012**, *46*, 732–744. [[CrossRef](#)] [[PubMed](#)]
48. Winslow, A.R.; Chen, C.-W.; Corrochano, S.; Acevedo-Arozena, A.; Gordon, D.E.; Peden, A.A.; Lichtenberg, M.; Menzies, F.M.; Ravikumar, B.; Imarisio, S.; et al.  $\alpha$ -Synuclein impairs macroautophagy: Implications for Parkinson’s disease. *J. Cell Biol.* **2010**, *190*, 1023–1037. [[CrossRef](#)]
49. Cooper, A.A.; Gitler, A.D.; Cashikar, A.; Haynes, C.M.; Hill, K.J.; Bhullar, B.; Liu, K.; Xu, K.; Strathearn, K.E.; Liu, F.; et al. Alpha-synuclein blocks ER-Golgi traffic and Rab1 rescues neuron loss in Parkinson’s models. *Science* **2006**, *313*, 324–328. [[CrossRef](#)]
50. Vogiatzi, T.; Xilouri, M.; Vekrellis, K.; Stefanis, L. Wild type alpha-synuclein is degraded by chaperone-mediated autophagy and macroautophagy in neuronal cells. *J. Biol. Chem.* **2008**, *283*, 23542–23556. [[CrossRef](#)]
51. Webb, J.L.; Ravikumar, B.; Atkins, J.; Skepper, J.N.; Rubinsztein, D.C. Alpha-Synuclein is degraded by both autophagy and the proteasome. *J. Biol. Chem.* **2003**, *278*, 25009–25013. [[CrossRef](#)] [[PubMed](#)]
52. Lehtonen, Š.; Sonninen, T.-M.; Wojciechowski, S.; Goldsteins, G.; Koistinaho, J. Dysfunction of Cellular Proteostasis in Parkinson’s Disease. *Front. Neurosci.* **2019**, *13*, 457. [[CrossRef](#)] [[PubMed](#)]
53. Rao, R.V.; Bredesen, D.E. Misfolded proteins, endoplasmic reticulum stress and neurodegeneration. *Curr. Opin. Cell Biol.* **2004**, *16*, 653–662. [[CrossRef](#)] [[PubMed](#)]
54. Gan-Or, Z.; Dion, P.A.; Rouleau, G.A. Genetic perspective on the role of the autophagy-lysosome pathway in Parkinson disease. *Autophagy* **2015**, *11*, 1443–1457. [[CrossRef](#)]
55. Burchell, V.S.; Nelson, D.E.; Sanchez-Martinez, A.; Delgado-Camprubi, M.; Ivatt, R.M.; Pogson, J.H.; Randle, S.J.; Wray, S.; Lewis, P.A.; Houlden, H.; et al. The Parkinson’s disease-linked proteins Fbxo7 and Parkin interact to mediate mitophagy. *Nat. Neurosci.* **2013**, *16*, 1257–1265. [[CrossRef](#)]
56. Orenstein, S.J.; Kuo, S.-H.; Tasset, I.; Arias, E.; Koga, H.; Fernandez-Carasa, I.; Cortes, E.; Honig, L.S.; Dauer, W.; Consiglio, A.; et al. Interplay of LRRK2 with chaperone-mediated autophagy. *Nat. Neurosci.* **2013**, *16*, 394–406. [[CrossRef](#)]
57. Ho, D.H.; Kim, H.; Nam, D.; Sim, H.; Kim, J.; Kim, H.G.; Son, I.; Seol, W. LRRK2 impairs autophagy by mediating phosphorylation of leucyl-tRNA synthetase. *Cell Biochem. Funct.* **2018**, *36*, 431–442. [[CrossRef](#)]
58. Neumann, M.; Sampathu, D.M.; Kwong, L.K.; Truax, A.C.; Micsenyi, M.C.; Chou, T.T.; Bruce, J.; Schuck, T.; Grossman, M.; Clark, C.M.; et al. Ubiquitinated TDP-43 in frontotemporal lobar degeneration and amyotrophic lateral sclerosis. *Science* **2006**, *314*, 130–133. [[CrossRef](#)]
59. Arai, T.; Hasegawa, M.; Akiyama, H.; Ikeda, K.; Nonaka, T.; Mori, H.; Mann, D.; Tsuchiya, K.; Yoshida, M.; Hashizume, Y.; et al. TDP-43 is a component of ubiquitin-positive tau-negative inclusions in frontotemporal lobar degeneration and amyotrophic lateral sclerosis. *Biochem. Biophys. Res. Commun.* **2006**, *351*, 602–611. [[CrossRef](#)]
60. Cascella, R.; Fani, G.; Capitini, C.; Rusmini, P.; Poletti, A.; Cecchi, C.; Chiti, F. Quantitative assessment of the degradation of aggregated TDP-43 mediated by the ubiquitin proteasome system and macroautophagy. *FASEB J.* **2017**, *31*, 5609–5624. [[CrossRef](#)]
61. Wang, X.J.; Yu, J.; Wong, S.H.; Cheng, A.S.L.; Chan, F.K.L.; Ng, S.S.M.; Cho, C.H.; Sung, J.J.Y.; Wu, W.K.K. A novel crosstalk between two major protein degradation systems: Regulation of proteasomal activity by autophagy. *Autophagy* **2013**, *9*, 1500–1508. [[CrossRef](#)] [[PubMed](#)]
62. Scotter, E.L.; Vance, C.; Nishimura, A.L.; Lee, Y.-B.; Chen, H.-J.; Urwin, H.; Sardone, V.; Mitchell, J.C.; Rogelj, B.; Rubinsztein, D.C.; et al. Differential roles of the ubiquitin proteasome system and autophagy in the clearance of soluble and aggregated TDP-43 species. *J. Cell Sci.* **2014**, *127*, 1263–1278. [[CrossRef](#)] [[PubMed](#)]



63. Barmada, S.J.; Serio, A.; Arjun, A.; Bilican, B.; Daub, A.; Ando, D.M.; Tsvetkov, A.; Pleiss, M.; Li, X.; Peisach, D.; et al. Autophagy induction enhances TDP43 turnover and survival in neuronal ALS models. *Nat. Chem. Biol.* **2014**, *10*, 677–685. [[CrossRef](#)] [[PubMed](#)]
64. Liu, G.; Coyne, A.N.; Pei, F.; Vaughan, S.; Chaung, M.; Zarnescu, D.C.; Buchan, J.R. Endocytosis regulates TDP-43 toxicity and turnover. *Nat. Commun.* **2017**, *8*, 2092. [[CrossRef](#)] [[PubMed](#)]
65. Kwiatkowski, T.J.; Bosco, D.A.; Leclerc, A.L.; Tamrazian, E.; Vanderburg, C.R.; Russ, C.; Davis, A.; Gilchrist, J.; Kasarskis, E.J.; Munsat, T.; et al. Mutations in the FUS/TLS gene on chromosome 16 cause familial amyotrophic lateral sclerosis. *Science* **2009**, *323*, 1205–1208. [[CrossRef](#)] [[PubMed](#)]
66. Mackenzie, I.R.A.; Bigio, E.H.; Ince, P.G.; Geser, F.; Neumann, M.; Cairns, N.J.; Kwong, L.K.; Forman, M.S.; Ravits, J.; Stewart, H.; et al. Pathological TDP-43 distinguishes sporadic amyotrophic lateral sclerosis from amyotrophic lateral sclerosis with SOD1 mutations. *Ann. Neurol.* **2007**, *61*, 427–434. [[CrossRef](#)]
67. Al-Sarraj, S.; King, A.; Troakes, C.; Smith, B.; Maekawa, S.; Bodi, I.; Rogelj, B.; Al-Chalabi, A.; Hortobágyi, T.; Shaw, C.E. p62 positive, TDP-43 negative, neuronal cytoplasmic and intranuclear inclusions in the cerebellum and hippocampus define the pathology of C9orf72-linked FTL and MND/ALS. *Acta Neuropathol.* **2011**, *122*, 691–702. [[CrossRef](#)]
68. Atkin, J.D.; Farg, M.A.; Walker, A.K.; McLean, C.; Tomas, D.; Horne, M.K. Endoplasmic reticulum stress and induction of the unfolded protein response in human sporadic amyotrophic lateral sclerosis. *Neurobiol. Dis.* **2008**, *30*, 400–407. [[CrossRef](#)]
69. Honjo, Y.; Kaneko, S.; Ito, H.; Horibe, T.; Nagashima, M.; Nakamura, M.; Fujita, K.; Takahashi, R.; Kusaka, H.; Kawakami, K. Protein disulfide isomerase-immunopositive inclusions in patients with amyotrophic lateral sclerosis. *Amyotroph. Lateral Scler.* **2011**, *12*, 444–450. [[CrossRef](#)]
70. Hoffstrom, B.G.; Kaplan, A.; Letso, R.; Schmid, R.S.; Turmel, G.J.; Lo, D.C.; Stockwell, B.R. Inhibitors of protein disulfide isomerase suppress apoptosis induced by misfolded proteins. *Nat. Chem. Biol.* **2010**, *6*, 900–906. [[CrossRef](#)]
71. Jaronen, M.; Vehviläinen, P.; Malm, T.; Keksa-Goldsteine, V.; Pollari, E.; Valonen, P.; Koistinaho, J.; Goldsteins, G. Protein disulfide isomerase in ALS mouse glia links protein misfolding with NADPH oxidase-catalyzed superoxide production. *Hum. Mol. Genet.* **2013**, *22*, 646–655. [[CrossRef](#)] [[PubMed](#)]
72. Nishitoh, H.; Kadowaki, H.; Nagai, A.; Maruyama, T.; Yokota, T.; Fukutomi, H.; Noguchi, T.; Matsuzawa, A.; Takeda, K.; Ichijo, H. ALS-linked mutant SOD1 induces ER stress- and ASK1-dependent motor neuron death by targeting Derlin-1. *Genes Dev.* **2008**, *22*, 1451–1464. [[CrossRef](#)] [[PubMed](#)]
73. Kanekura, K.; Nishimoto, I.; Aiso, S.; Matsuoka, M. Characterization of amyotrophic lateral sclerosis-linked P56S mutation of vesicle-associated membrane protein-associated protein B (VAPB/ALS8). *J. Biol. Chem.* **2006**, *281*, 30223–30233. [[CrossRef](#)] [[PubMed](#)]
74. Suzuki, H.; Kanekura, K.; Levine, T.P.; Kohno, K.; Oikkonen, V.M.; Aiso, S.; Matsuoka, M. ALS-linked P56S-VAPB, an aggregated loss-of-function mutant of VAPB, predisposes motor neurons to ER stress-related death by inducing aggregation of co-expressed wild-type VAPB. *J. Neurochem.* **2009**, *108*, 973–985. [[CrossRef](#)] [[PubMed](#)]
75. Gkogkas, C.; Middleton, S.; Kremer, A.M.; Wardrope, C.; Hannah, M.; Gillingwater, T.H.; Skehel, P. VAPB interacts with and modulates the activity of ATF6. *Hum. Mol. Genet.* **2008**, *17*, 1517–1526. [[CrossRef](#)]
76. Miles, J.; Scherz-Shouval, R.; van Oosten-Hawle, P. Expanding the Organismal Proteostasis Network: Linking Systemic Stress Signaling with the Innate Immune Response. *Trends Biochem. Sci.* **2019**, *44*, 927–942. [[CrossRef](#)]
77. Govindarajan, S.; Verheugen, E.; Venken, K.; Gaublomme, D.; Maelegheer, M.; Cloots, E.; Gysens, F.; De Geest, B.G.; Cheng, T.; Moody, D.B.; et al. ER stress in antigen-presenting cells promotes NKT cell activation through endogenous neutral lipids. *EMBO Rep.* **2020**, *21*, e48927. [[CrossRef](#)]
78. Zhang, K. Endoplasmic reticulum stress activates cleavage of CREBH to induce a systemic inflammatory response. *Cell* **2006**, *124*, 587–599. [[CrossRef](#)]
79. Hu, P.; Han, Z.; Couvillon, A.D.; Kaufman, R.J.; Exton, J.H. Autocrine Tumor Necrosis Factor Alpha Links Endoplasmic Reticulum Stress to the Membrane Death Receptor Pathway through IRE1 $\alpha$ -Mediated NF- $\kappa$ B Activation and Down-Regulation of TRAF2 Expression. *Mol. Cell. Biol.* **2006**, *26*, 3071–3084. [[CrossRef](#)]
80. Grootjans, J.; Kaser, A.; Kaufman, R.J.; Blumberg, R.S. The unfolded protein response in immunity and inflammation. *Nat. Rev. Immunol.* **2016**, *16*, 469–484. [[CrossRef](#)]

81. Tam, A.B.; Mercado, E.L.; Hoffmann, A.; Niwa, M. ER Stress Activates NF- $\kappa$ B by Integrating Functions of Basal IKK Activity, IRE1 and PERK. *PLoS ONE* **2012**, *7*, e45078. [[CrossRef](#)] [[PubMed](#)]
82. Smith, J.A. Regulation of cytokine production by the unfolded protein response; Implications for infection and autoimmunity. *Front. Immunol.* **2018**, *9*, 422. [[CrossRef](#)] [[PubMed](#)]
83. Ponnappan, S.; Ponnappan, U. Aging and immune function: Molecular mechanisms to interventions. *Antioxid. Redox Signal.* **2011**, *14*, 1551–1585. [[CrossRef](#)] [[PubMed](#)]
84. Simard, A.R.; Soulet, D.; Gowing, G.; Julien, J.P.; Rivest, S. Bone marrow-derived microglia play a critical role in restricting senile plaque formation in Alzheimer's disease. *Neuron* **2006**, *49*, 489–502. [[CrossRef](#)] [[PubMed](#)]
85. Malm, T.M.; Koistinaho, M.; Pärepallo, M.; Vatanen, T.; Ooka, A.; Karlsson, S.; Koistinaho, J. Bone-marrow-derived cells contribute to the recruitment of microglial cells in response to  $\beta$ -amyloid deposition in APP/PS1 double transgenic Alzheimer mice. *Neurobiol. Dis.* **2005**, *18*, 134–142. [[CrossRef](#)]
86. Hickman, S.E.; Allison, E.K.; El Khoury, J. Microglial dysfunction and defective  $\beta$ -amyloid clearance pathways in aging Alzheimer's disease mice. *J. Neurosci.* **2008**, *28*, 8354–8360. [[CrossRef](#)]
87. Brunello, C.A.; Merezko, M.; Uronen, R.L.; Huttunen, H.J. Mechanisms of secretion and spreading of pathological tau protein. *Cell. Mol. Life Sci.* **2020**, *77*, 1721–1744. [[CrossRef](#)]
88. Asai, H.; Ikezu, S.; Tsunoda, S.; Medalla, M.; Luebke, J.; Haydar, T.; Wolozin, B.; Butovsky, O.; Kügler, S.; Ikezu, T. Depletion of microglia and inhibition of exosome synthesis halt tau propagation. *Nat. Neurosci.* **2015**, *18*, 1584–1593. [[CrossRef](#)]
89. Zhou, Y.; Ulland, T.K.; Colonna, M. TREM2-dependent effects on microglia in Alzheimer's Disease. *Front. Aging Neurosci.* **2018**, *10*, 202. [[CrossRef](#)]
90. Gelders, G.; Baekelandt, V.; Van der Perren, A. Linking neuroinflammation and neurodegeneration in Parkinson's disease. *J. Immunol. Res.* **2018**, *2018*. [[CrossRef](#)]
91. Harms, A.S.; Delic, V.; Thome, A.D.; Bryant, N.; Liu, Z.; Chandra, S.; Jurkuvenaite, A.; West, A.B.  $\alpha$ -Synuclein fibrils recruit peripheral immune cells in the rat brain prior to neurodegeneration. *Acta Neuropathol. Commun.* **2017**, *5*, 85. [[CrossRef](#)] [[PubMed](#)]
92. Luk, K.C.; Kehm, V.; Carroll, J.; Zhang, B.; O'Brien, P.; Trojanowski, J.Q.; Lee, V.M.Y. Pathological  $\alpha$ -synuclein transmission initiates Parkinson-like neurodegeneration in nontransgenic mice. *Science* **2012**, *338*, 949–953. [[CrossRef](#)] [[PubMed](#)]
93. Kim, C.; Ho, D.H.; Suk, J.E.; You, S.; Michael, S.; Kang, J.; Lee, S.J.; Masliah, E.; Hwang, D.; Lee, H.J.; et al. Neuron-released oligomeric  $\alpha$ -synuclein is an endogenous agonist of TLR2 for paracrine activation of microglia. *Nat. Commun.* **2013**, *4*, 1–12. [[CrossRef](#)]
94. Gustot, A.; Gallea, J.I.; Sarroukh, R.; Celej, M.S.; Ruysschaert, J.M.; Raussens, V. Amyloid fibrils are the molecular trigger of inflammation in Parkinson's disease. *Biochem. J.* **2015**, *471*, 323–333. [[CrossRef](#)] [[PubMed](#)]
95. Kim, C.; Lee, H.J.; Masliah, E.; Lee, S.J. Non-cell-autonomous Neurotoxicity of  $\alpha$ -synuclein through microglial toll-like receptor 2. *Exp. Neurobiol.* **2016**, *25*, 113–119. [[CrossRef](#)] [[PubMed](#)]
96. Fellner, L.; Irschick, R.; Schanda, K.; Reindl, M.; Klimaschewski, L.; Poewe, W.; Wenning, G.K.; Stefanova, N. Toll-like receptor 4 is required for  $\alpha$ -synuclein dependent activation of microglia and astroglia. *GLIA* **2013**, *61*, 349–360. [[CrossRef](#)] [[PubMed](#)]
97. Cebrián, C.; Zucca, F.A.; Mauri, P.; Steinbeck, J.A.; Studer, L.; Scherzer, C.R.; Kanter, E.; Budhu, S.; Mandelbaum, J.; Vonsattel, J.P.; et al. MHC-I expression renders catecholaminergic neurons susceptible to T-cell-mediated degeneration. *Nat. Commun.* **2014**, *5*, 1–14. [[CrossRef](#)] [[PubMed](#)]
98. Ahtoniemi, T.; Jaronen, M.; Keksa-Goldsteine, V.; Goldsteins, G.; Koistinaho, J. Mutant SOD1 from spinal cord of G93A rats is destabilized and binds to inner mitochondrial membrane. *Neurobiol. Dis.* **2008**, *32*, 479–485. [[CrossRef](#)]
99. Jaronen, M.; Goldsteins, G.; Koistinaho, J. ER stress and unfolded protein response in amyotrophic lateral sclerosis—a controversial role of protein disulphide isomerase. *Front. Cell. Neurosci.* **2014**, *8*, 402. [[CrossRef](#)]
100. Heneka, M.T.; McManus, R.M.; Latz, E. Inflammasome signalling in brain function and neurodegenerative disease. *Nat. Rev. Neurosci.* **2018**, *19*, 610–621. [[CrossRef](#)]
101. Martinon, F.; Burns, K.; Tschopp, J. The inflammasome: A molecular platform triggering activation of inflammatory caspases and processing of proIL-beta. *Cell* **2002**, *10*, 417–426.
102. Broz, P.; Dixit, V.M. Inflammasomes: Mechanism of assembly, regulation and signalling. *Nat. Rev. Immunol.* **2016**, *16*, 407–420. [[CrossRef](#)] [[PubMed](#)]

103. Qiao, Y.; Wang, P.; Qi, J.; Zhang, L.; Gao, C. TLR-induced NF- $\kappa$ B activation regulates NLRP3 expression in murine macrophages. *FEBS Lett.* **2012**, *586*, 1022–1026. [[CrossRef](#)] [[PubMed](#)]
104. Toma, C.; Higa, N.; Koizumi, Y.; Nakasone, N.; Ogura, Y.; McCoy, A.J.; Franchi, L.; Uematsu, S.; Sagara, J.; Taniguchi, S.; et al. Pathogenic *Vibrio* activate NLRP3 inflammasome via cytotoxins and TLR/nucleotide-binding oligomerization domain-mediated NF-kappa B signaling. *J. Immunol.* **2010**, *184*, 5287–5297. [[CrossRef](#)]
105. Kelley, N.; Jeltema, D.; Duan, Y.; He, Y. The NLRP3 Inflammasome: An Overview of Mechanisms of Activation and Regulation. *Int. J. Mol. Sci.* **2019**, *20*, 3328. [[CrossRef](#)]
106. Voet, S.; Srinivasan, S.; Lamkanfi, M.; van Loo, G. Inflammasomes in neuroinflammatory and neurodegenerative diseases. *Embo Mol. Med.* **2019**, *11*, e10248. [[CrossRef](#)]
107. Guan, Y.; Han, F. Key Mechanisms and Potential Targets of the NLRP3 Inflammasome in Neurodegenerative Diseases. *Neuroscience* **2020**, *14*, 37.
108. Liu, Y.; Dai, Y.; Li, Q.; Chen, C.; Chen, H.; Song, Y.; Hua, F.; Zhang, Z. Beta-amyloid activates NLRP3 inflammasome via TLR4 in mouse microglia. *Neurosci. Lett.* **2020**, *736*, 135279. [[CrossRef](#)]
109. Saresella, M.; La Rosa, F.; Piancone, F.; Zoppis, M.; Marventano, I.; Calabrese, E.; Rainone, V.; Nemni, R.; Mancuso, R.; Clerici, M. The NLRP3 and NLRP1 inflammasomes are activated in Alzheimer's disease. *Mol. Neurodegener.* **2016**, *11*, 23. [[CrossRef](#)]
110. Lue, L.F.; Rydel, R.; Brigham, E.F.; Yang, L.B.; Hampel, H.; Murphy, G.M.; Brachova, L.; Yan, S.D.; Walker, D.G.; Shen, Y.; et al. Inflammatory repertoire of Alzheimer's disease and nondemented elderly microglia in vitro. *Glia* **2001**, *35*, 72–79. [[CrossRef](#)]
111. Halle, A.; Hornung, V.; Petzold, G.C.; Stewart, C.R.; Monks, B.G.; Reinheckel, T.; Fitzgerald, K.A.; Latz, E.; Moore, K.J.; Golenbock, D.T. The NALP3 inflammasome is involved in the innate immune response to amyloid-beta. *Nat. Immunol.* **2008**, *9*, 857–865. [[CrossRef](#)] [[PubMed](#)]
112. Heneka, M.T.; Kummer, M.P.; Stutz, A.; Delekate, A.; Schwartz, S.; Vieira-Saecker, A.; Griep, A.; Axt, D.; Remus, A.; Tzeng, T.-C.; et al. NLRP3 is activated in Alzheimer's disease and contributes to pathology in APP/PS1 mice. *Nature* **2013**, *493*, 674–678. [[CrossRef](#)] [[PubMed](#)]
113. Dempsey, C.; Rubio Araiz, A.; Bryson, K.J.; Finucane, O.; Larkin, C.; Mills, E.L.; Robertson, A.B.; Cooper, M.A.; O'Neill, L.J.; Lynch, M.A. Inhibiting the NLRP3 inflammasome with MCC950 promotes non-phlogistic clearance of amyloid- $\beta$  and cognitive function in APP/PS1 mice. *Brain. Behav. Immun.* **2017**, *61*, 306–316. [[CrossRef](#)] [[PubMed](#)]
114. Xiong, R.; Zhou, X.-G.; Tang, Y.; Wu, J.-M.; Sun, Y.-S.; Teng, J.-F.; Pan, R.; Law, B.Y.-K.; Zhao, Y.; Qiu, W.-Q.; et al. Lychee seed polyphenol protects the blood-brain barrier through inhibiting A $\beta$ (25-35)-induced NLRP3 inflammasome activation via the AMPK/mTOR/ULK1-mediated autophagy in bEnd.3 cells and APP/PS1 mice. *Phytother. Res. Ptr* **2020**. [[CrossRef](#)]
115. Fan, Z.; Pan, Y.-T.; Zhang, Z.-Y.; Yang, H.; Yu, S.-Y.; Zheng, Y.; Ma, J.-H.; Wang, X.-M. Systemic activation of NLRP3 inflammasome and plasma  $\alpha$ -synuclein levels are correlated with motor severity and progression in Parkinson's disease. *J. Neuroinflammation* **2020**, *17*, 11. [[CrossRef](#)]
116. Zhou, Y.; Lu, M.; Du, R.-H.; Qiao, C.; Jiang, C.-Y.; Zhang, K.-Z.; Ding, J.-H.; Hu, G. MicroRNA-7 targets Nod-like receptor protein 3 inflammasome to modulate neuroinflammation in the pathogenesis of Parkinson's disease. *Mol. Neurodegener.* **2016**, *11*, 28. [[CrossRef](#)]
117. Chatterjee, K.; Roy, A.; Banerjee, R.; Choudhury, S.; Mondal, B.; Halder, S.; Basu, P.; Shubham, S.; Dey, S.; Kumar, H. Inflammasome and  $\alpha$ -synuclein in Parkinson's disease: A cross-sectional study. *J. Neuroimmunol.* **2020**, *338*, 577089. [[CrossRef](#)]
118. Zhang, P.; Shao, X.-Y.; Qi, G.-J.; Chen, Q.; Bu, L.-L.; Chen, L.-J.; Shi, J.; Ming, J.; Tian, B. Cdk5-Dependent Activation of Neuronal Inflammasomes in Parkinson's Disease. *Mov. Disord. Off. Movement Disorders.* **2016**, *31*, 366–376. [[CrossRef](#)]
119. Mao, Z.; Liu, C.; Ji, S.; Yang, Q.; Ye, H.; Han, H.; Xue, Z. The NLRP3 Inflammasome is Involved in the Pathogenesis of Parkinson's Disease in Rats. *Neurochem. Res.* **2017**, *42*, 1104–1115. [[CrossRef](#)]
120. Qiao, C.; Zhang, Q.; Jiang, Q.; Zhang, T.; Chen, M.; Fan, Y.; Ding, J.; Lu, M.; Hu, G. Inhibition of the hepatic Nlrp3 protects dopaminergic neurons via attenuating systemic inflammation in a MPTP/p mouse model of Parkinson's disease. *J. Neuroinflammation.* **2018**, *15*, 193. [[CrossRef](#)]

121. Wang, X.; Chi, J.; Huang, D.; Ding, L.; Zhao, X.; Jiang, L.; Yu, Y.; Gao, F.  $\alpha$ -synuclein promotes progression of Parkinson's disease by upregulating autophagy signaling pathway to activate NLRP3 inflammasome. *Exp. Ther. Med.* **2020**, *19*, 931–938. [[CrossRef](#)] [[PubMed](#)]
122. Hzecka, J.; Stelmasiak, Z.; Dobosz, B. Interleukin-1beta converting enzyme/Caspase-1 (ICE/Caspase-1) and soluble APO-1/Fas/CD 95 receptor in amyotrophic lateral sclerosis patients. *Acta Neurol. Scand.* **2001**, *103*, 255–258. [[CrossRef](#)] [[PubMed](#)]
123. Meissner, F.; Molawi, K.; Zychlinsky, A. Mutant superoxide dismutase 1-induced IL-1beta accelerates ALS pathogenesis. *Proc. Natl. Acad. Sci. USA* **2010**, *107*, 13046–13050. [[CrossRef](#)] [[PubMed](#)]
124. Bellezza, I.; Grottelli, S.; Costanzi, E.; Scarpelli, P.; Pigna, E.; Morozzi, G.; Mezzasoma, L.; Peirce, M.J.; Moresi, V.; Adamo, S.; et al. Peroxynitrite Activates the NLRP3 Inflammasome Cascade in SOD1(G93A) Mouse Model of Amyotrophic Lateral Sclerosis. *Mol. Neurobiol.* **2018**, *55*, 2350–2361. [[CrossRef](#)] [[PubMed](#)]
125. Deora, V.; Lee, J.D.; Albornoz, E.A.; McAlary, L.; Jagaraj, C.J.; Robertson, A.A.B.; Atkin, J.D.; Cooper, M.A.; Schroder, K.; Yerbury, J.J.; et al. The microglial NLRP3 inflammasome is activated by amyotrophic lateral sclerosis proteins. *Glia* **2020**, *68*, 407–421. [[CrossRef](#)]
126. Alexianu, M.E.; Kozovska, M.; Appel, S.H. Immune reactivity in a mouse model of familial ALS correlates with disease progression. *Neurology* **2001**, *57*, 1282–1289. [[CrossRef](#)] [[PubMed](#)]
127. Johann, S.; Heitzer, M.; Kanagaratnam, M.; Goswami, A.; Rizo, T.; Weis, J.; Troost, D.; Beyer, C. NLRP3 inflammasome is expressed by astrocytes in the SOD1 mouse model of ALS and in human sporadic ALS patients. *Glia* **2015**, *63*, 2260–2273. [[CrossRef](#)]
128. Liu, C.-W.; Jacobson, A.D. Functions of the 19S complex in proteasomal degradation. *Trends Biochem. Sci.* **2013**, *38*, 103–110. [[CrossRef](#)]
129. Raynes, R.; Pomatto, L.C.D.; Davies, K.J.A. Degradation of oxidized proteins by the proteasome: Distinguishing between the 20S, 26S, and immunoproteasome proteolytic pathways. *Mol. Asp. Med.* **2016**, *50*, 41–55. [[CrossRef](#)]
130. Griffin, T.A.; Nandi, D.; Cruz, M.; Fehling, H.J.; Kaer, L.V.; Monaco, J.J.; Colbert, R.A. Immunoproteasome assembly: Cooperative incorporation of interferon gamma (IFN-gamma)-inducible subunits. *J. Exp. Med.* **1998**, *187*, 97–104. [[CrossRef](#)]
131. Ferrington, D.A.; Gregerson, D.S. Immunoproteasomes: Structure, Function, and Antigen Presentation. *Prog. Mol. Biol. Transl. Sci.* **2012**, *109*, 75–112. [[PubMed](#)]
132. Rock, K.L.; York, I.A.; Saric, T.; Goldberg, A.L. Protein degradation and the generation of MHC class I-presented peptides. *Adv. Immunol.* **2002**, *80*, 1–70. [[PubMed](#)]
133. Cardozo, C.; Kohanski, R.A. Altered Properties of the Branched Chain Amino Acid-preferring Activity Contribute to Increased Cleavages after Branched Chain Residues by the “Immunoproteasome”. *J. Biol. Chem.* **1998**, *273*, 16764–16770. [[CrossRef](#)] [[PubMed](#)]
134. Lei, B.; Abdul Hameed, M.D.M.; Hamza, A.; Wehenkel, M.; Muzyka, J.L.; Yao, X.-J.; Kim, K.-B.; Zhan, C.-G. Molecular basis of the selectivity of the immunoproteasome catalytic subunit LMP2-specific inhibitor revealed by molecular modeling and dynamics simulations. *J. Phys. Chem. B.* **2010**, *114*, 12333–12339. [[CrossRef](#)]
135. Driscoll, J.; Brown, M.G.; Finley, D.; Monaco, J.J. MHC-linked LMP gene products specifically alter peptidase activities of the proteasome. *Nature* **1993**, *365*, 262–264. [[CrossRef](#)]
136. Heink, S.; Ludwig, D.; Kloetzel, P.-M.; Krüger, E. IFN-gamma-induced immune adaptation of the proteasome system is an accelerated and transient response. *Proc. Natl. Acad. Sci. USA* **2005**, *102*, 9241–9246. [[CrossRef](#)] [[PubMed](#)]
137. Pickering, A.M.; Koop, A.L.; Teoh, C.Y.; Ermak, G.; Grune, T.; Davies, K.J.A. The immunoproteasome, the 20S proteasome and the PA28 $\alpha\beta$  proteasome regulator are oxidative-stress-adaptive proteolytic complexes. *Biochem. J.* **2010**, *432*, 585–594. [[CrossRef](#)]
138. Pickering, A.M.; Davies, K.J.A. Differential Roles of Proteasome and Immunoproteasome Regulators Pa28 $\alpha\beta$ , Pa28 $\gamma$  and Pa200 in the Degradation of Oxidized Proteins. *Arch. Biochem. Biophys* **2012**, *523*, 181–190. [[CrossRef](#)]
139. Pickering, A.M.; Linder, R.A.; Zhang, H.; Forman, H.J.; Davies, K.J.A. Nrf2-dependent Induction of Proteasome and Pa28 $\alpha\beta$  Regulator Are Required for Adaptation to Oxidative Stress. *J. Biol. Chem.* **2012**, *287*, 10021–10031. [[CrossRef](#)]

140. Pickering, A.M.; Staab, T.A.; Tower, J.; Sieburth, D.; Davies, K.J.A. A conserved role for the 20S proteasome and Nrf2 transcription factor in oxidative stress adaptation in mammals, *Caenorhabditis elegans* and *Drosophila melanogaster*. *J. Exp. Biol.* **2013**, *216*, 543–553. [[CrossRef](#)]
141. Pickering, A.M.; Vojtovich, L.; Tower, J.A.; Davies, K.J. Oxidative stress adaptation with acute, chronic, and repeated stress. *Free Radic. Biol. Med.* **2013**, *55*, 109–118. [[CrossRef](#)] [[PubMed](#)]
142. PACHER, P.; BECKMAN, J.S.; LIAUDET, L. Nitric Oxide and Peroxynitrite in Health and Disease. *Physiol. Rev.* **2007**, *87*, 315–424. [[CrossRef](#)] [[PubMed](#)]
143. Thomas, S.; Kotamraju, S.; Zielonka, J.; Harder, D.R.; Kalyanaraman, B. Hydrogen peroxide induces nitric oxide and proteasome activity in endothelial cells: A bell-shaped signaling response. *Free Radic. Biol. Med.* **2007**, *42*, 1049–1061. [[CrossRef](#)] [[PubMed](#)]
144. Kotamraju, S.; Matalon, S.; Matsunaga, T.; Shang, T.; Hickman-Davis, J.M.; Kalyanaraman, B. Upregulation of immunoproteasomes by nitric oxide: Potential antioxidative mechanism in endothelial cells. *Free Radic. Biol. Med.* **2006**, *40*, 1034–1044. [[CrossRef](#)]
145. Kotamraju, S.; Kalivendi, S.; Shang, T.; Kalyanaraman, B. Nitric oxide, proteasomal function, and iron homeostasis—implications in aging and neurodegenerative diseases. *Methods Enzymol.* **2005**, *396*, 526–534.
146. Piccinini, M.; Mostert, M.; Croce, S.; Baldovino, S.; Papotti, M.; Rinaudo, M.T. Interferon- $\gamma$ -inducible subunits are incorporated in human brain 20S proteasome. *J. Neuroimmunol.* **2003**, *135*, 135–140. [[CrossRef](#)]
147. Limanaqi, F.; Biagioni, F.; Gaglione, A.; Busceti, C.L.; Fornai, F.A. Sentinel in the Crosstalk Between the Nervous and Immune System: The (Immuno)-Proteasome. *Front. Immunol.* **2019**, *10*, 628. [[CrossRef](#)]
148. Kimura, H.; Caturegli, P.; Takahashi, M.; Suzuki, K. New Insights into the Function of the Immunoproteasome in Immune and Nonimmune. *Cells* **2015**, *2015*, 541984. [[CrossRef](#)]
149. Krüger, E.; Kloetzel, P.-M. Immunoproteasomes at the interface of innate and adaptive immune responses: Two faces of one enzyme. *Curr. Opin. Immunol.* **2012**, *24*, 77–83. [[CrossRef](#)]
150. Huber, E.M.; Basler, M.; Schwab, R.; Heinemeyer, W.; Kirk, C.J.; Groettrup, M.; Groll, M. Immuno- and Constitutive Proteasome Crystal Structures Reveal Differences in Substrate and Inhibitor Specificity. *Cell* **2012**, *148*, 727–738. [[CrossRef](#)]
151. Hallermalm, K.; Seki, K.; Wei, C.; Castelli, C.; Rivoltini, L.; Kiessling, R.; Levitskaya, J. Tumor necrosis factor- $\alpha$  induces coordinated changes in major histocompatibility class I presentation pathway, resulting in increased stability of class I complexes at the cell surface. *Blood* **2001**, *98*, 1108–1115. [[CrossRef](#)] [[PubMed](#)]
152. Seifert, U.; Bialy, L.P.; Ebstein, F.; Bech-Otschir, D.; Voigt, A.; Schröter, F.; Prozorovski, T.; Lange, N.; Steffen, J.; Rieger, M.; et al. Immunoproteasomes preserve protein homeostasis upon interferon-induced oxidative stress. *Cell* **2010**, *142*, 613–624. [[CrossRef](#)] [[PubMed](#)]
153. Nathan, J.A.; Spinnenhirn, V.; Schmidtke, G.; Basler, M.; Groettrup, M.; Goldberg, A.L. Immuno- and constitutive proteasomes do not differ in their abilities to degrade ubiquitinated proteins. *Cell* **2013**, *152*, 1184–1194. [[CrossRef](#)] [[PubMed](#)]
154. Cebrián, C.; Loike, J.D.; Sulzer, D. Neuronal MHC-I expression and its implications in synaptic function, axonal regeneration and Parkinson’s and other brain diseases. *Front. Neuroanatomy.* **2014**, *8*, 114. [[CrossRef](#)] [[PubMed](#)]
155. Lazarczyk, M.J.; Kemmler, J.E.; Eyford, B.A.; Short, J.A.; Varghese, M.; Sowa, A.; Dickstein, D.R.; Yuk, F.J.; Puri, R.; Biron, K.E.; et al. Major Histocompatibility Complex. class I proteins are critical for maintaining neuronal structural complexity in the aging brain. *Sci. Rep.* **2016**, *6*, 26199. [[CrossRef](#)] [[PubMed](#)]
156. Edamura, M.; Murakami, G.; Meng, H.; Itakura, M.; Shigemoto, R.; Fukuda, A.; Nakahara, D. Functional Deficiency of MHC Class I Enhances LTP and Abolishes LTD in the Nucleus Accumbens of Mice. *PLoS ONE* **2014**, *9*. [[CrossRef](#)]
157. Murakami, G.; Edamura, M.; Furukawa, T.; Kawasaki, H.; Kosugi, I.; Fukuda, A.; Iwashita, T.; Nakahara, D. MHC class I in dopaminergic neurons suppresses relapse to reward seeking. *Sci. Adv.* **2018**, *4*, eaap7388. [[CrossRef](#)]
158. Orre, M.; Kamphuis, W.; Dooves, S.; Kooijman, L.; Chan, E.T.; Kirk, C.J.; Dimayuga Smith, V.; Koot, S.; Mamber, C.; Jansen, A.H.; et al. Reactive glia show increased immunoproteasome activity in Alzheimer’s disease. *Brain.* **2013**, *136*, 1415–1431. [[CrossRef](#)]
159. Nijholt, D.T.; de Graaf, T.R.; van Haastert, E.S.; Oliveira, A.O.; Berkers, C.R.; Zwart, R.; Ovaa, H.; Baas, F.; Hoozemans, J.J.M.; Scheper, W. Endoplasmic reticulum stress activates autophagy but not the proteasome in neuronal cells: Implications for Alzheimer’s disease. *Cell Death Differ.* **2011**, *18*, 1071–1081. [[CrossRef](#)]

160. Mishto, M.; Bellavista, E.; Santoro, A.; Stolzing, A.; Ligorio, C.; Nacmias, B.; Spazzafumo, L.; Chiappelli, M.; Licastro, F.; Sorbi, S.; et al. Immunoproteasome and LMP2 polymorphism in aged and Alzheimer's disease brains. *Neurobiol. Aging* **2006**, *27*, 54–66. [[CrossRef](#)]
161. Aso, E.; Lomoio, S.; López-González, I.; Joda, L.; Carmona, M.; Fernández-Yagüe, N.; Moreno, J.; Juvés, S.; Pujol, A.; Pamplona, R.; et al. Amyloid generation and dysfunctional immunoproteasome activation with disease progression in animal model of familial Alzheimer's disease. *Brain Pathol.* **2012**, *22*, 636–653. [[CrossRef](#)] [[PubMed](#)]
162. Wagner, L.K.; Gilling, K.E.; Schormann, E.; Kloetzel, P.M.; Heppner, F.L.; Krüger, E.; Prokop, S. Immunoproteasome deficiency alters microglial cytokine response and improves cognitive deficits in Alzheimer's disease-like APPPS1 mice. *Acta Neuropathol. Commun.* **2017**, *5*, 52. [[CrossRef](#)] [[PubMed](#)]
163. Ugras, S.; Daniels, M.J.; Fazelinia, H.; Gould, N.S.; Yocum, A.K.; Luk, K.C.; Luna, E.; Ding, H.; McKennan, C.; Seeholzer, S.; et al. Induction of the Immunoproteasome Subunit Lmp7 Links Proteostasis and Immunity in  $\alpha$ -Synuclein Aggregation Disorders. *EBioMedicine* **2018**, *31*, 307–319. [[CrossRef](#)] [[PubMed](#)]
164. Mo, M.-S.; Li, G.-H.; Sun, C.-C.; Huang, S.-X.; Wei, L.; Zhang, L.-M.; Zhou, M.-M.; Wu, Z.-H.; Guo, W.-Y.; Yang, X.-L.; et al. Dopaminergic neurons show increased low-molecular-mass protein 7 activity induced by 6-hydroxydopamine in vitro and in vivo. *Transl. Neurodegener.* **2018**, *7*, 19. [[CrossRef](#)] [[PubMed](#)]
165. Puttapparthi, K.; Elliott, J.L. Non-neuronal induction of immunoproteasome subunits in an ALS model: Possible mediation by cytokines. *Exp. Neurol.* **2005**, *196*, 441–451. [[CrossRef](#)]
166. Cheroni, C.; Peviani, M.; Cascio, P.; Debiassi, S.; Monti, C.; Bendotti, C. Accumulation of human SOD1 and ubiquitinated deposits in the spinal cord of SOD1G93A mice during motor neuron disease progression correlates with a decrease of proteasome. *Neurobiol. Dis.* **2005**, *18*, 509–522. [[CrossRef](#)]
167. Cheroni, C.; Marino, M.; Tortarolo, M.; Veglianesi, P.; De Biasi, S.; Fontana, E.; Zuccarello, L.V.; Maynard, C.J.; Dantuma, N.P.; Bendotti, C. Functional alterations of the ubiquitin-proteasome system in motor neurons of a mouse model of familial amyotrophic lateral sclerosis. *Hum. Mol. Genet.* **2009**, *18*, 82–96. [[CrossRef](#)]
168. Puttapparthi, K.; Van Kaer, L.; Elliott, J.L. Assessing the role of immuno-proteasomes in a mouse model of familial. *ALS. Exp. Neurol.* **2007**, *206*, 53–58. [[CrossRef](#)]
169. Díaz-Hernández, M.; Hernández, F.; Martín-Aparicio, E.; Gómez-Ramos, P.; Morán, M.A.; Castaño, J.G.; Ferrer, I.; Avila, J.; Lucas, J.J. Neuronal induction of the immunoproteasome in Huntington's disease. *Neuroscience.* **2003**, *23*, 11653–11661. [[CrossRef](#)]
170. Mishto, M.; Bellavista, E.; Ligorio, C.; Textoris-Taube, K.; Santoro, A.; Giordano, M.; D'Alfonso, S.; Listi, F.; Nacmias, B.; Cellini, E.; et al. Immunoproteasome LMP2 60HH variant alters MBP epitope generation and reduces the risk to develop multiple sclerosis in Italian female population. *PLoS ONE* **2010**, *5*, e9287. [[CrossRef](#)]
171. Zheng, J.; Bizzozero, O.A. Reduced proteasomal activity contributes to the accumulation of carbonylated proteins in chronic experimental autoimmune encephalomyelitis. *J. Neurochem.* **2010**, *115*, 1556–1567. [[CrossRef](#)] [[PubMed](#)]
172. Zheng, J.; Dasgupta, A.; Bizzozero, O.A. Changes in 20S subunit composition are largely responsible for altered proteasomal activities in experimental autoimmune encephalomyelitis. *J. Neurochem.* **2012**, *121*, 486–494. [[CrossRef](#)]
173. Fissolo, N.; Kraus, M.; Reich, M.; Ayturan, M.; Overkleeft, H.; Driessen, C.; Weissert, R. Dual inhibition of proteasomal and lysosomal proteolysis ameliorates autoimmune central nervous system inflammation. *Eur. J. Immunol.* **2008**, *38*, 2401–2411. [[CrossRef](#)] [[PubMed](#)]
174. Belogurov, A.; Kuzina, E.; Kudriaeva, A.; Kononikhin, A.; Kovalchuk, S.; Surina, Y.; Smirnov, I.; Lomakin, Y.; Bacheva, A.; Stepanov, A.; et al. Ubiquitin-independent proteasomal degradation of myelin basic protein contributes to development of neurodegenerative autoimmunity. *FASEB J.* **2015**, *29*, 1901–1913. [[PubMed](#)]
175. Xi, J.; Zhuang, R.; Kong, L.; He, R.; Zhu, H.; Zhang, J. Immunoproteasome-selective inhibitors: An overview of recent developments as potential drugs for hematologic malignancies and autoimmune diseases. *Eur. J. Med. Chem.* **2019**, *182*, 111646. [[CrossRef](#)]
176. Yeo, I.J.; Lee, M.J.; Baek, A.; Miller, Z.; Bhattarai, D.; Baek, Y.M.; Jeong, H.J.; Kim, Y.K.; Kim, D.-E.; Hong, J.T.; et al. A dual inhibitor of the proteasome catalytic subunits LMP2 and Y attenuates disease progression in mouse models of Alzheimer's disease. *Sci. Rep.* **2019**, *9*, 18393. [[CrossRef](#)]

177. Vanderlugt, C.L.; Rahbe, S.M.; Elliott, P.J.; Dal Canto, M.C.; Miller, S.D. Treatment of Established Relapsing Experimental Autoimmune Encephalomyelitis with the Proteasome Inhibitor PS-5191. *J. Autoimmun.* **2000**, *14*, 205–211. [[CrossRef](#)]
178. Basler, M.; Mundt, S.; Muchamuel, T.; Moll, C.; Jiang, J.; Groettrup, M.; Kirk, C.J. Inhibition of the immunoproteasome ameliorates experimental autoimmune encephalomyelitis. *EMBO Mol. Med.* **2014**, *6*, 226–238. [[CrossRef](#)]
179. Sun, C.; Mo, M.; Wang, Y.; Yu, W.; Song, C.; Wang, X.; Chen, S.; Liu, Y. Activation of the immunoproteasome protects SH-SY5Y cells from the toxicity of rotenone. *Neurotoxicology* **2019**, *73*, 112–119. [[CrossRef](#)]
180. Zhou, H.; Li, S.; Li, C.; Yang, X.; Li, H.; Zhong, H.; Lu, J.-H.; Lee, S.M.-Y. Oxyphylla A Promotes Degradation of  $\alpha$ -Synuclein for Neuroprotection via Activation of Immunoproteasome. *Aging Dis.* **2019**, *11*, 559–574. [[CrossRef](#)]
181. Ahtoniemi, T.; Goldsteins, G.; Keksa-Goldsteine, V.; Malm, T.; Kanninen, K.; Salminen, A.; Koistinaho, J. Pyrrolidine dithiocarbamate inhibits induction of immunoproteasome and decreases survival in a rat model of amyotrophic lateral sclerosis. *Mol. Pharmacol.* **2007**, *71*, 30–37. [[CrossRef](#)] [[PubMed](#)]



© 2020 by the authors. Licensee MDPI, Basel, Switzerland. This article is an open access article distributed under the terms and conditions of the Creative Commons Attribution (CC BY) license (<http://creativecommons.org/licenses/by/4.0/>).