



UNIVERSITY OF HELSINKI



<https://helda.helsinki.fi>

Helda

---

## Fields of a thousand shimmers: canopy architecture determines high-frequency light fluctuations

Durand, Maxime

Wiley Blackwell

2023-06

---

Durand, M & Robson, T M 2023, 'Fields of a thousand shimmers: canopy architecture determines high-frequency light fluctuations', *New Phytologist*, vol. 238, no. 5, pp. 2000-2015. <https://doi.org/10.1111/nph.18822>

---

<http://hdl.handle.net/10138/563108>

10.1111/nph.18822

---

cc\_by

publishedVersion

---

*Downloaded from Helda, University of Helsinki institutional repository.*

*This is an electronic reprint of the original article.*

*This reprint may differ from the original in pagination and typographic detail.*

*Please cite the original version.*

# Fields of a thousand shimmers: canopy architecture determines high-frequency light fluctuations

Maxime Durand<sup>1</sup>  and T. Matthew Robson<sup>1,2</sup> 

<sup>1</sup>Organismal and Evolutionary Biology (OEB), Viikki Plant Science Centre (ViPS), Faculty of Biological and Environmental Sciences, University of Helsinki, Helsinki 00014, Finland;

<sup>2</sup>National Forestry School, University of Cumbria, Ambleside, LA22 9BB, UK

Author for correspondence:

Maxime Durand

Email: [maxime.durand@helsinki.fi](mailto:maxime.durand@helsinki.fi)

Received: 9 November 2022

Accepted: 15 February 2023

*New Phytologist* (2023) **238**: 2000–2015

doi: 10.1111/nph.18822

**Key words:** canopy architecture, crops, forests, light quality, shade, solar radiation, spectral composition, sunfleck.

## Summary

- Wind-induced movement in the canopy produces rapid fluctuations in irradiance, called 'windflecks'. They create a dynamic environment for photosynthesis that bears little resemblance to the stable controlled conditions under which plants are typically measured.
- We recorded time series of irradiance to assess the diversity of windfleck properties (intensity, duration, frequency, clustering, and spectral composition) in canopies of four crops and five tree species. We also measured traits associated with leaf morphology and canopy architecture, which could be associated with canopy-specific differences in windflecks.
- Distinct features of windfleck properties were identified both between and among crop and tree canopy. Windflecks in crops were generally more intense and longer, and baseline irradiance was much higher than even the peak irradiance during a windfleck in a forest. The change in spectral composition during a windfleck was species-specific. Overall, irradiance fluctuations were less frequent and less intense in tall canopies and with increased depth from the canopy.
- Our systematic exploration of how canopy structure dictates light dynamics provides new insight into windfleck creation. Coupled with progress in elucidation of the mechanisms of photosynthetic induction, this knowledge should improve our capacity to model canopy eco-physiology and understand light use efficiency in shade.

## Introduction

Plants canopies are ever-changing environments where steady conditions are an exception rather than the norm (Kaiser *et al.*, 2018; Murchie & Ruban, 2020; Durand *et al.*, 2022). Even under a clear sky at the very top of a canopy, a light breeze will cause leaves to move and change the relative angle of incidence of sunlight, affecting the irradiance they receive and the leaf boundary-layer conductance. In such conditions, those plants that can respond faster to fluctuations in the environment may have an advantage in terms of maximizing carbon gain (Kromdijk *et al.*, 2016; Hubbart *et al.*, 2018). Improving plant performance by accelerating the response of photosynthesis to light fluctuations has received increasing interest in recent years (Murchie *et al.*, 2009; Kaiser *et al.*, 2018; Slattery *et al.*, 2018; Long *et al.*, 2022). This is regarded as a way to, in principle, mitigate climate-related declines in agricultural plant productivity (Asseng *et al.*, 2014), and the rising worldwide demand for food (Ort *et al.*, 2015). Better models that account for the dynamic response of photosynthesis to fluctuating environments will also allow us to predict canopy net carbon assimilation more accurately and how it is impacted by global changes.

Multiple physiological processes, operating at different time scales, in plant canopies are affected by changes in irradiance

(Way & Pearcy, 2012). Patterns of light fluctuations, in terms of frequency, duration, and intensity, determine the activation state of Rubisco (Taylor *et al.*, 2022), Ribulose 1,5-bisphosphate regeneration (Sassenrath-Cole & Pearcy, 1994), stomatal opening (Allen & Pearcy, 2000), and the rate of nonphotochemical quenching (Murchie & Ruban, 2020). These limitations control the efficiency at which the subsequent period of high light can be used. Even brief light fluctuations will affect these relatively slow (15–45 min duration) processes, dictating the induction state of the photosynthetic machinery, and ultimately determining photosynthetic rates. For instance, rapid light fluctuations will maintain Rubisco activation (Tanaka *et al.*, 2019) and keep stomata open (Zeiger *et al.*, 1985), and the frequent intermittent brief occurrence of shade may prevent the accumulation of photoprotection. Over a shorter time scale (< 1 min), the efficiency at which photosynthesis can use brief light fluctuations (its momentary induction state), such as those induced by wind, will depend on several processes. First, the build-up of Ribulose 1,5-bisphosphate reaches a nonlimiting state 1–2 min after illumination (Sassenrath-Cole & Pearcy, 1992). Second, CO<sub>2</sub> assimilation is sustained for several seconds postillumination due to residual photosynthetic metabolic pools (McAlister, 1939; Laisk *et al.*, 1984). Third, pools of photorespiratory metabolites can induce a CO<sub>2</sub> burst after illumination, which can offset the

overall CO<sub>2</sub> assimilated (Vines *et al.*, 1983; Pearcy, 1990). These processes are often neglected in models, and yet the degree to which they affect long-term photosynthetic rates in fluctuating light environments will depend on the duration, frequency, and intensity of light fluctuations (Pons & Pearcy, 1992; Roden & Pearcy, 1993b; Kaiser *et al.*, 2015). Only by characterizing the dynamics of light in natural environments, and associated changes in spectral composition, can we hope to understand how these photosynthetic processes alter plant productivity under realistic light fluctuations (Murchie *et al.*, 2018).

To date, exploration of the probable links between canopy structure and the properties of light fluctuations has received little attention (Way & Pearcy, 2012; Smith & Berry, 2013). Yet, we know that light distribution in the canopy is shaped by its constituent species and their morphological, architectural, and mechanical traits, which interact with environmental factors such as the sun position, clouds, and the wind. For example, a higher leaf area in the upper canopy will intercept more light, thus creating a darker lower canopy (Lang, 1986). Among others, canopy height, stand density, and branching patterns, as well as leaf shape, size, and orientation (Falster & Westoby, 2003), create the 3D canopy architecture determining the penetration of light through the canopy and thus its interception by leaves (Burgess *et al.*, 2017). In recent years, there has been increasing recognition of the effect of wind on plant productivity, especially in crops, creating movement in the canopy that depends on the mechanical properties of stems and leaves (de Langre, 2008; Burgess *et al.*, 2016). By contrast, the lignified stems of trees present a stronger resistance to wind, meaning that wind-induced movements will be stronger around the petiole axis (Roden & Pearcy, 1993a). Forest canopies, being taller than crop canopies, also generate more penumbra (or partial shade; Smith *et al.*, 1989). Therefore, the arrangement of species that compose the canopy will likely affect the light fluctuations found therein, impacting the light environment in the understory.

Historically, most research on light fluctuations, where brief periods of high irradiance are often called sunflecks, has been focused on solar-induced movements (e.g. helio- and phototropisms) in understory species in forests (Atkins & Poole, 1937; Evans, 1956; Pearcy, 1990; Chazdon & Pearcy, 1991). Light fluctuations were much more rarely examined in crops (Pearcy *et al.*, 1990; Barradas *et al.*, 1998). More recently, light fluctuations induced by wind have been dubbed 'windflecks' (Burgess *et al.*, 2021), as a sub-category of sunflecks, to distinguish them from those induced by sun and clouds (generally longer than 30 s). Sunflecks are notorious for being hard to define and are often characterized as periods of irradiance above an arbitrary threshold contingent on the surrounding shade (e.g. 50  $\mu\text{mol m}^{-2} \text{s}^{-1}$  in Miyashita *et al.*, 2012; 300  $\mu\text{mol m}^{-2} \text{s}^{-1}$  in Roden & Pearcy, 1993a, 70% of the irradiance at the top of the canopy in Barradas *et al.*, 1998). This makes comparison between studies and canopies difficult, as for example 50  $\mu\text{mol m}^{-2} \text{s}^{-1}$  could correspond to a shade environment in one canopy but the peak of a sunfleck in another. We recently devised a method of tracking light fluctuations that provides a more generic and repeatable means to define sunflecks as brief periods of high

irradiance relative to the background shade environment, based on motifs in time series of irradiance (Durand *et al.*, 2021a). This allows us to describe key features of windflecks, consistently in any canopy.

We recorded time series of irradiance at very high frequency to describe with appropriate resolution the rapid wind-induced light fluctuations in four crop and five tree canopies. To allow for their direct comparison, measurements were done within a short period of time, confined to similar environmental conditions (cloudless sky and similar solar angle), and phenological stages. Using our published method, we then characterized the properties of these light fluctuations, hereafter called windflecks. We also recorded longer light fluctuations (> 1 min) hereafter defined as sunflecks by analyzing hemispherical pictures. We explored the potential relationships of windflecks and sunflecks with leaf morphological and canopy architectural traits. We aimed to: characterize windfleck properties in both crop and tree canopies; examine how the spectral composition is modified during a windfleck; and identify the main canopy architectural traits that drive the patterns of light fluctuations.

## Materials and Methods

### Study site and plant material measured in 2021

We conducted this experiment at the University of Helsinki, Finland (60.227°N, 25.018°E, 10 m above sea level), at Viikki Experimental Farm and Viikki Field Plots for the crop species, and at Viikki Arboretum for the tree stands. We measured separate cultivated fields of oats (*Avena sativa*, L.), rapeseed (*Brassica napus*, L.), barley (*Hordeum vulgare*, L.), and broad bean (*Vicia faba*, L.), as well as pure stands of Norway maple (*Acer platanoides*, L.), silver birch (*Betula pendula*, Roth.), Norway spruce (*Picea abies*, L.), and grey alder (*Alnus incana*, L.). Information on the growing conditions of the crops can be found in Table 1. We also measured in an experimental European beech stand (*Fagus sylvatica*, L.) planted in 2010. The stand is composed of trees from four provenances: Blavikslarna southern Sweden, Eichelberg and Rindelholz in Germany, and Montejo de la Sierra, in Spain. The plot was thinned by removing half of the trees in May 2020 (for more information, see Durand *et al.*, 2022).

### Light measurements

We measured spectral irradiance with a CCD array spectroradiometer Maya 2000 Pro (Ocean insights, Dunedin, FL, USA) using a cosine diffuser (D7-H-SMA; Bentham Instruments Ltd, Reading, UK) attached to a fiber-optic cable (FC-UV400–2400  $\mu\text{m}$ ; Avantes, Leatherhead, UK). The Finnish Radiation and Nuclear Safety Authority calibrated the spectrometer in April 2021 (STUK; Ylianttila *et al.*, 2007). With the diffuser in the horizontal position, we recorded sets of contiguous 10 000 scans, each scan comprised of 1377 wavelengths in the range 280–898 nm measured simultaneously, with an integration time of 10 ms. Each set thus made up a 100 s-long time series. We used

**Table 1** Information on growing conditions for field crops: barley (*Hordeum vulgare*), broad bean (*Vicia faba*), oats (*Avena sativa*), and rapeseed (*Brassica napus*).

Crop species	Variety	Day of planting	Row spacing (cm)	Plant spacing (cm)	Density (plants m <sup>-2</sup> )	Soil type	Fertilizer	Fertilizer application
<i>Avena sativa</i>	Meeri	June 2	12.5	1.6	500	Clay loam	Belor Premium N27	300 kg ha <sup>-1</sup>
<i>Brassica napus</i>	Synneva	May 16	12.5	2.6	300	Clay loam	Belor Premium N27	350 kg ha <sup>-1</sup>
<i>Hordeum vulgare</i>	Alvari	May 14	12.5	1.6	500	Silt loam	Belor Premium N27 + manure (May 4)	280 kg ha <sup>-1</sup> + 25 m <sup>3</sup> ha <sup>-1</sup>
<i>Vicia faba</i>	Louhi	May 12	12.5	1.6	>70	Clay loam	YaraMila Y1	100 kg ha <sup>-1</sup>

Values are means ± SD.

the ‘high-speed acquisition’ routine of the SPECTRASUITE software (v.2.0.162; Ocean insights), that captures raw data without processing it, to prevent delays between detection by the sensor and communication between the software and the operating system. All time series were recorded from June 30 to July 14, 2021 ( $n = 8-16$ ), after heading but before anthesis of the oat and barley. Rapeseed was measured first and beans last, both during their early flowering stages. Measurements were recorded at mid-canopy depth in the crops, and at 50-cm above the ground in forest stands. In the beech stand, we also recorded at every meter from 0 to 4 m in canopy height (the top of the canopy being at 6 m). The diffuser is a small flat cylinder (4.2 × 1.8 cm) which can be placed inside dense canopies, equidistant from stems, on a small tripod without affecting the canopy structure. After each time series was recorded, we took two additional control recordings to correct for stray light and dark signal. The first recorded the baseline noise, which was subtracted from the measurements, by placing a darkening cap over the diffuser to block all UV and visible radiation. The second record was to correct for stray light in the UV region, made by placing a polycarbonate cap (blocking 280–400 nm radiation) over the diffuser (Aphalo & Ylianttila, 2022). We recorded all data within 3 h of solar noon (at *c.* 13:30 h) from 10:30 h to 15:30 h, local time in the absence of clouds. Above-canopy measurements were recorded between one and three times per day, above the crop fields, or in the open outside of the forest stand. We used OOACQUIRE and PHOTOBIOLOGY R packages (Aphalo, 2015; Aphalo & Ylianttila, 2022) to process the raw spectroradiometer counts into irradiance values, and implement the corrections mentioned above.

### Windfleck detection and properties

The method used to detect and measure windfleck properties is detailed in Durand *et al.* (2021a). Briefly, we calculated the rate of change between two time points along the measured time series of PAR irradiance (400–700 nm,  $\Delta_{\text{PAR}}$ ), for each point  $n$  at time  $t$  in the time series and its following measurement  $n + 1$  as:

$$\Delta_{\text{PAR}} = \frac{\text{PPFD}_{n+1} - \text{PPFD}_n}{t_{n+1} - t_n} \quad \text{Eqn 1}$$

$\Delta_{\text{PAR}}$  has the property of crossing 0 when PAR irradiance switches from decreasing to increasing, and likewise in reverse.

This allowed us to pinpoint the start, peak, and end of a windfleck and associated PAR irradiances. Potential windflecks corresponded with an increase in PAR irradiance larger than 5  $\mu\text{mol m}^{-2} \text{s}^{-1}$  or represented an increase in PAR irradiance between the peak and the baseline of > 5%. This was done to exclude natural noisy oscillations in the irradiance.

We calculated windfleck duration as the time between the start and end of a windfleck, and its intensity as the difference in PAR irradiance between the peak and the baseline, taken as the lowest PAR irradiance at either the start or end of the windfleck. This approach avoids potential inaccuracies caused by asymmetry. We calculated a median time between windflecks ( $T$ ) as the time between the end of a windfleck and the start of the next windfleck, and the overall frequency ( $F$ ) as the total number of windflecks recorded divided by the combined duration of all time series. We also calculated an index of windfleck clustering as  $(F^{-1} - T)/F^{-1}$ , which varies between 0 (least clustered) and 1 (most clustered). The integrated increase in PAR irradiance caused by the windfleck was calculated as the total integrated PAR irradiance during the windfleck, from which the residual PAR irradiance (the linearly interpolated PAR irradiance between the start and end of a windfleck) was subtracted. To assess windfleck spectral composition, UV-A : PAR, blue : red (B : R), blue : green (B : G), and red : far-red (R : FR) spectral photon ratios were calculated (UV-A: 315–400 nm; PAR: 400–700 nm; blue: 420–490 nm; green: 500–570 nm; red: 620–680 nm; far-red: 700–750 nm).

### Canopy architecture

We took hemispherical photographs at 10 measurement points for crops species, and five for forest stands, using a Canon Eos 800D (Canon Inc., Tokyo, Japan) camera with a CMOS 24 MP image sensor combined with a circular fisheye lens (Sigma 4.5 mm f2.8 EX DC HSM; Sigma Corp. of America, Kanagawa, Japan). All photographs were taken in RAW format, at 10 cm above the ground using a tripod under overcast sky. ISO was fixed at 100 and aperture at F22, varying only shutter speed to adjust exposure. We produced a sharpened gamma-corrected and contrast-stretched blue channel 8-bit jpeg from the RAW files following Macfarlane *et al.* (2014). Photographs were analyzed with the HEMISFER software (Schleppi *et al.*, 2007) following the weighted ellipsoidal method from Thimonier *et al.* (2010) and

using the nonlinearity and canopy clumping corrections (Chen & Cihlar, 1995; Schleppi *et al.*, 2007). This allowed us to estimate mean tilt angle of the leaves, plant area index (PAI, i.e. leaf area index without corrections to remove stems), and canopy light transmission. Hereafter, we designate as sunflecks the period for which the sensor experienced direct sunlight, in contrast to the spectrometer method described above to record windflecks. The distribution of sunfleck duration can be calculated by plotting a time course of the sun using the same hemispherical photographs with the GAP LIGHT ANALYSER software (Simon Fraser University, BC, Canada). We considered the period June 30 to July 14, the same as for the light measurements, and used an automatic thresholding according to Nobis & Hunziker (2005). Finally, we also measured plant height ( $n = 10$ ), as well as leaf width, and length ( $n = 50$ ) in all canopies sample at mid-canopy height (crops) or green freshly fallen (trees).

### Statistical analysis

We used Type II ANOVA to test for significant differences between canopy species in light fluctuations and canopy architectural traits. Normality and homoscedasticity were checked graphically. We performed *post hoc* pairwise contrast analyses to test for differences among factor levels, and adjusted  $P$ -values to control the false discovery rate. Significant differences were considered at  $P < 0.05$  for all tests. These tests were made using R 4.2.1 (R Core Team, 2022) with the packages CAR (Fox & Weisberg, 2019), EMMEANS (Searle *et al.*, 1980), and MULTCOMP (Hothorn *et al.*, 2008). Windfleck properties cannot be directly paired with canopy architecture at the individual measurement level, thus to test for a correlation we had to use species means. This had the effect of reducing our statistical power, as each species is considered as a single replicate even though it is informed by a large number of observations. To address this problem, we randomly paired windfleck properties and canopy architecture at the species level 100 000 times (similar to a bootstrap with replacement), and calculated a value ' $b$ ' representing the percentage of random pairings that gave a  $P$ -value  $< 0.05$ , following Durand *et al.* (2020). If two variables are uncorrelated, it would be expected that 5% of the random pairings would result in a correlation with a  $P$ -value  $< 0.05$ , thus only  $b$ -values higher than 5% would provide evidence of a possible correlation between the two variables. Data used for statistical analyses is available in Supporting Information Table S1.

## Results

### Variability of canopy architecture at the species level

There were generally large differences between the canopy architecture of trees and crops (Fig. 1), albeit a single genotype per species was examined. PAI was 1.75 times higher in the tree species than in the crops, with an average canopy light transmission of 63% in the crops but only 8.2% in the tree stands. Leaves were generally erectophile in the crops ( $72.2 \pm 1.9^\circ$ ) but more planophile in the tree stands ( $32.4 \pm 2.6^\circ$ , Fig. 1e). Among the crop

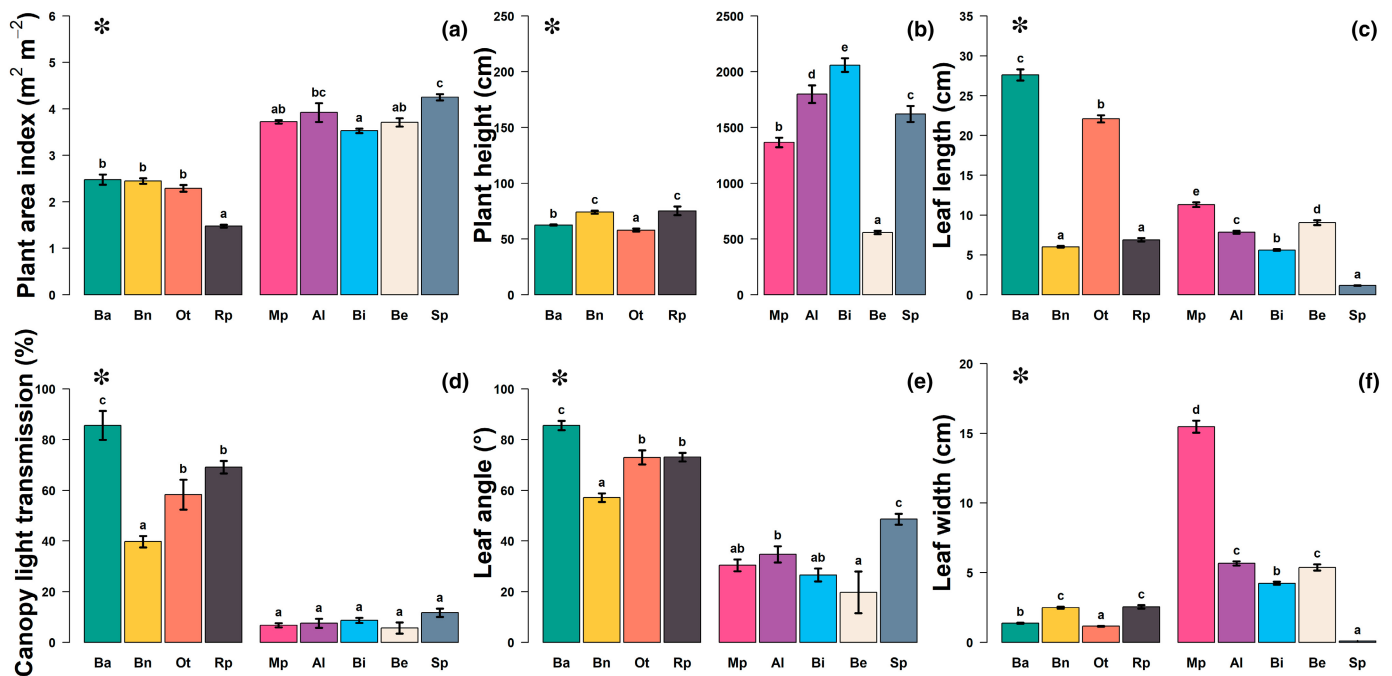
species, only the rapeseed canopy showed a PAI significantly lower (by 39%) than the other three canopies (Fig. 1a). This was despite rapeseed being the tallest crop canopy ( $75.3 \pm 3.9$  cm, Fig. 1b). The bean canopy had the most planophile leaves ( $57.1 \pm 1.7^\circ$ ) and barley the most erectophile ones ( $85.6 \pm 1.8^\circ$ ), which resulted in beans having the lowest ( $39.7 \pm 2.2\%$ ) and barley highest ( $85.6 \pm 5.7\%$ ) canopy light transmission among crops (Fig. 1d). Barley had very long leaves (Fig. 1c), 1.25, 4.6, and 4.0 times longer than oat, bean, and rapeseed, respectively, which had wider leaves (Fig. 1f).

Among the trees, PAI was much more similar across stands, with only the spruce stand having a PAI 16% higher than the maple, birch, and beech stand ( $P < 0.007$ , Fig. 1a). We could not detect significant differences in canopy light transmission ( $P = 0.08$ ), but spruce leaves were the most erectophile ( $48.6 \pm 2.1^\circ$ ) and beech leaves the most planophile ( $19.8 \pm 8.2^\circ$ ). The beech stand being the youngest, it was also the shortest ( $5.6 \pm 1.4$  m), followed by the maple, spruce, alder, and birch as the tallest stand ( $20.6 \pm 6.0$  m, Fig. 1b). The maple leaves were the widest ( $> 2.7$  times wider than the other trees), the longest, and the only ones that were wider than long (Fig. 1c–f). On the contrary, the spruce leaves were the smallest, both in length and width, but had the higher length-to-width ratio (11.7).

### Species-specific windfleck properties

Overall, the baseline and peak irradiance was 7.0 and 6.4 times higher in the crops than in the tree stands (respectively, Table 2). This resulted in windflecks being much more intense, by 5.3 times, in the crop (on average  $266.4 \pm 3.2 \mu\text{mol m}^{-2} \text{s}^{-1}$ ) than in the tree canopies ( $60.6 \pm 1.0 \mu\text{mol m}^{-2} \text{s}^{-1}$ ,  $P < 0.001$ ). Windfleck duration was on average longer in the crop ( $206.4 \pm 0.2$  ms) than in the tree stands ( $132.3 \pm 0.1$  ms,  $P < 0.001$ ), although this was species dependent. This led to an integrated PAR increase of  $34.6 \pm 0.7 \mu\text{mol m}^{-2}$  per windfleck on average in the crops, compared with only  $5.6 \pm 0.2 \mu\text{mol m}^{-2}$  per windfleck in the tree stands. Differences in time interval between windfleck, windfleck frequency, and clustering was strongly species-specific, rather than being arranged according to the crop/tree distinction (Table 2). As for longer sunflecks, between June 30 and July 14 we found them to be 3.9 times more numerous in the crop canopies than in the tree stands for those lasting  $< 10$  min, and 7.4 times as numerous when considering those lasting  $> 10$  min.

Among crop canopies, barley had the highest baseline irradiance, twice as high as in the bean canopy, and 47 and 9% higher than the oat and rapeseed canopies, respectively (Fig. 2). There was a similar trend for the peak irradiance of the windflecks. This led to windflecks being 2.3, 1.7, and 1.5 times more intense in the barley canopy compared with bean, oat, and rapeseed, respectively (Fig. 2a). Due to a smaller difference in windfleck duration than intensity between canopies, the average integrated PAR increase per windfleck followed a similar pattern (Table 2). Windfleck duration was shortest in the rapeseed canopy, by 28, 18, and 50% compared with the barley, bean, and oat. Along with the lowest average time between windflecks, this resulted in



**Fig. 1** Canopy architectural traits measured in crop fields (Ba, barley, *Hordeum vulgare*; Bn, bean, *Vicia faba*; Ot, oat, *Avena sativa*; Rp, rapeseed, *Brassica napus*) and tree stands (Mp, *Acer platanoides*; Al, *Alnus incana*; Bi, *Betula pendula*; Be, *Fagus sylvatica*; Sp, *Picea abies*) in Helsinki. Traits measured included plant area index (a), plant height (b), leaf length (c), canopy light transmission (d), leaf angle (e), and width (f). Note the different scales of plant height for crops and trees. Values are means  $\pm$  SE ( $n = 10\text{--}50$ ). The asterisk on the top left shows for each trait when an analysis of variance concluded to a significant difference between crop and tree species. Letters represent statistically significant differences between groups (crops and trees were tested separately) tested by *post hoc* pairwise comparisons ( $P < 0.05$ ).

a windfleck frequency in rapeseed that was 1.5, 2.5, and 2.4 times lower than in the barley, bean, and oat canopy, respectively (Fig. 2c). Overall, windflecks in the bean and oat canopies tended to be more clustered together than in the other canopies (Table 2). For longer sunflecks, we found that those lasting  $< 10$  min occurred most often in the rapeseed canopy, but those lasting  $> 10$  min were more frequent in the barley.

The ranking among tree species was the same for both baseline and peak irradiance during windflecks, with the highest irradiance in beech followed by birch, spruce, maple, and alder stands (Fig. 3). Yet, irradiance increased by 82.2% during a windfleck in the alder stand, but only by 37.2% in the spruce stand, resulting in a similar windfleck intensity in the maple, alder, and spruce stand, but still on average 2.3 times lower than that of birch or beech stands (Fig. 3a). Maple had one of the least intense windflecks, but they were also the longest, 2.6 times as long as the shortest windflecks of the alder stand. This led to maple and beech stands having the highest average integrated PAR increase per windfleck, the former due to longer windflecks, and the latter due to more intense ones (Table 2). The maple stand also had the least frequent windflecks, with an average time between windflecks being at least 2.6 times as long as in the other stands. This pattern was in part due to a higher degree of windfleck clustering in the maple stand, while the least clustering was found in the birch stand where windflecks were shortest and most frequent. Some long sunflecks were present in the forest stands, unlike the crops canopies. The maple stand had the most sunflecks shorter

than 10 min, and the spruce stand the least (Fig. S1). For sunflecks longer than 10 min, the intragroup variability was too high to detect significant differences between tree stands.

### Changes of spectral composition during a windfleck

The ratio of UV-A to PAR generally decreased from the baseline to the peak of the windfleck, by as much as 22% in the barley canopy, whereas in the beech and spruce canopy, UV-A : PAR was lowest, and increased by 6% and 30% during windflecks. The lowest baseline B : G ratio was also in the beech stand, where it increased by 14% on average during a windfleck, while other canopies had either a similar or lower B : G ratio during a windfleck. For all canopies, the average B : R ratio decreased by 10% and the R : FR ratio increased by 31% during a windfleck. In general, a smaller baseline ratio was correlated with a larger increase (or a smaller decrease) during the windfleck ( $P < 0.002$ ; Fig. S1).

In barley, UV-A radiation and blue light did not increase as much as green or red light, and there was a modest increase of R : FR in a windfleck (Table 3, Fig. 4). The other crops showed a similar trend, with rapeseed having the smallest proportional change in spectral composition overall. In maple, while the short-wave part of the spectrum showed small changes in spectral composition, there was a large increase in red light, leading to a large reduction in B : R and increase in R : FR in a windfleck. In alder and birch, this increase extended to the green light as well, cause

**Table 2** Summary of windfleck properties in crop fields (*Hordeum vulgare*, *Vicia faba*, *Avena sativa*, and *Brassica napus*) and tree stands (*Acer platanoides*, *Alnus incana*, *Betula pendula*, *Fagus sylvatica*, and *Picea abies*) in Helsinki.

Species	Baseline irradiance ( $\mu\text{mol m}^{-2} \text{s}^{-1}$ )	Peak irradiance ( $\mu\text{mol m}^{-2} \text{s}^{-1}$ )	Windfleck intensity ( $\mu\text{mol m}^{-2} \text{s}^{-1}$ )	Windfleck duration (ms)	Windfleck time interval (s)	Windfleck frequency ( $\text{s}^{-1}$ )	Windfleck clustering (au)	Integrated PAR increase ( $\mu\text{mol m}^{-2}$ )	No. of sunfleck < 10 min	No. of sunfleck > 10 min
<i>Hordeum vulgare</i>	708.5 ± 9.7 g	1088.3 ± 10.5 h	379.8 ± 8.5 f	227.1 ± 3.3 d	0.61 ± 0.04 c	1.61	0.4	51.3 ± 1.7 g	437.8 ± 41.1 d	52.8 ± 9.2 c
<i>Vicia faba</i>	350.9 ± 5.9 d	514.2 ± 9.4 e	163.3 ± 7.0 c	208.3 ± 4.0 c	1.04 ± 0.09 d	0.77	0.65	22.2 ± 1.4 d	383.4 ± 23.3 cd	41.5 ± 6.1 c
<i>Avena sativa</i>	481.8 ± 8.1 e	711.6 ± 10.6 f	229.8 ± 6.8 d	265.1 ± 6.0 e	1.00 ± 0.07 d	0.92	0.65	38.7 ± 1.9 f	634.5 ± 43.5 e	17.7 ± 5 ab
<i>Brassica napus</i>	646.3 ± 4.2 f	902.2 ± 6.4 g	255.8 ± 3.8 e	176.3 ± 2.3 b	0.41 ± 0.01 b	2.23	0.49	29.4 ± 0.7 e	1413.0 ± 35.0 f	35.2 ± 7.4 bc
<i>Acer platanoides</i>	57.5 ± 7.6 ab	90.1 ± 8.8 ab	32.6 ± 4.1 a	296.4 ± 23.8 f	4.29 ± 0.79 f	0.15	0.87	10.1 ± 3.3 bc	269.8 ± 71.1 bc	2.4 ± 1.2 a
<i>Alnus incana</i>	41.1 ± 1.7 a	74.9 ± 2.3 a	33.8 ± 1.3 a	114.4 ± 2.1 a	0.55 ± 0.06 c	1.68	0.72	2.2 ± 0.1 a	123.2 ± 16.4 ab	1.2 ± 0.9 a
<i>Betula pendula</i>	100.8 ± 1.3 c	170.5 ± 2.3 c	69.7 ± 1.4 b	115.0 ± 1.1 a	0.30 ± 0.02 a	3.24	0.51	5.3 ± 0.2 b	260.4 ± 11.5 bc	9.4 ± 6.1 a
<i>Fagus sylvatica</i>	113.0 ± 5.3 c	190.7 ± 7.7 d	77.7 ± 4.1 b	205.6 ± 5.8 c	1.14 ± 0.14 d	0.53	0.81	12.8 ± 1.5 c	141.8 ± 47.4 ab	0.2 ± 0.2 a
<i>Picea abies</i>	76.0 ± 3.7 b	104.3 ± 4.8 b	28.4 ± 2.3 a	177.3 ± 7.3 b	1.67 ± 0.13 e	0.46	0.69	5.1 ± 1.0 ab	101.0 ± 15.4 a	10.0 ± 6.3 a

Windfleck frequency and clustering were calculated over the whole measurement period, as such they could not be included in statistical analyses, all other properties differed significantly among stands. Values are means ± SE of sets of 10 000 measurements at different locations within each stand/field ( $n = 8-16$ ). Distribution of durations given in Supporting Information Fig. S1. Letters represent statistically significant differences between groups tested by *post hoc* pairwise comparisons ( $P < 0.05$ ).

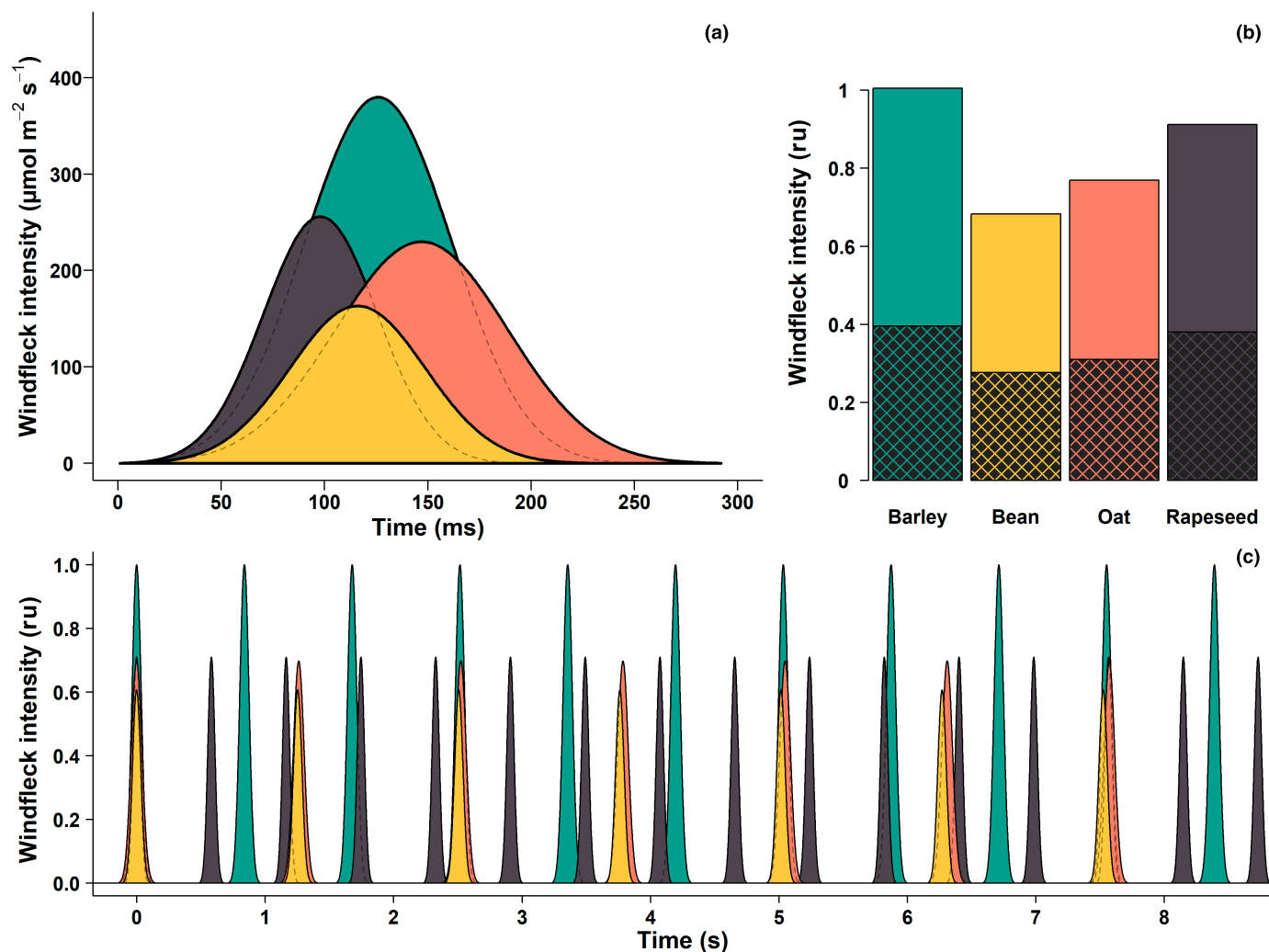
a reduced B : G during the windfleck, unlike in maple (Table 3). We recorded the largest relative increase in both blue and red, compared with green, in the beech canopy, while in the spruce, there was a relative increase in UV-A radiation but minor changes in the blue, green, and red regions.

### A gradient of windfleck properties with canopy height

We recorded a large number of windflecks at each canopy height, allowing high statistical power, even when correlations are relatively weak. For example, there was a minor reduction in windfleck duration compared with their distribution, from  $0.89 \pm 0.01$  s at the ground level to  $0.64 \pm 0.02$  s at 4 m (Fig. 5a). Yet, the range of windfleck durations was large, with 50% of windflecks either longer than 1.2 s or shorter than 0.5 s at ground level. While at 4 m, 50% of windflecks were either longer than 0.8 s or shorter than 0.4 s. The correlation was also weak, although statistically significant, for the average time interval between windflecks, which had a Pearson's coefficient of correlation ( $R$ ) of  $-0.06$ . Still, a stronger correlation was found with windfleck intensity ( $R = 0.42$ , Fig. 5c), which increased from  $102.3 \pm 4.4 \mu\text{mol m}^{-2} \text{s}^{-1}$  at ground level to  $480.0 \pm 17.6 \mu\text{mol m}^{-2} \text{s}^{-1}$  at 4 m. This led to a similar, albeit weaker, positive correlation between the integrated PAR increase per windfleck and canopy height ( $R = 0.25$ ). In general, with height in the beech canopy, windflecks tended to be shorter, more frequent, and much more intense (Fig. 5).

### Relationships between canopy architecture and the properties of light fluctuations therein

The architecture of the canopy was generally well correlated with the properties of windflecks, even though our statistical power was reduced by using species means. We found PAI to be negatively correlated with the number of sunflecks longer than 10 min over a period of 16 d ( $R = -0.77$ ,  $P = 0.02$ , Fig. 6a), the intensity of windflecks ( $R = -0.83$ ,  $P = 0.005$ , Fig. 6b), and the integrated increase in PAR per windfleck ( $R = -0.78$ ,  $P = 0.013$ , Fig. 6d). Both canopy light transmission and the average PAR irradiance were positively correlated with the number of sunflecks longer than 10 min ( $R > 0.88$ ;  $P < 0.002$ , Fig. 6c-i), windfleck intensity ( $R > 0.98$ ,  $P < 0.001$ , Fig. 6g-k), and the integrated increase in PAR per windfleck ( $R > 0.93$ ,  $P < 0.001$ , Fig. 6h-l). Windfleck duration was neither correlated with PAI, canopy light transmission, nor the average PAR irradiance ( $P > 0.46$ , Fig. 6b-j) or sunfleck frequency (data not shown). In general, denser canopies produce fewer long sunflecks than sparser canopies, and less intense windflecks, but of similar duration and frequency to sparser canopies. Some correlations could only be detected in either the crops or the tree canopies but not both. For example, average leaf angle was positively correlated with windfleck intensity in the crops ( $R = 0.96$ ,  $P = 0.04$ , Fig. 7a), but only a relatively weak negative tendency was found in the forest stands ( $R = -0.82$ ,  $P = 0.09$ , Fig. 7b). Sunfleck clustering produced a negative trend with leaf angle ( $R = -0.8$ ,  $P = 0.21$ ) and canopy light transmission



**Fig. 2** Typical windfleck properties recorded in the four crop fields (Ba, barley in green, *Hordeum vulgare*; Bn, bean in yellow, *Vicia faba*; Ot, oat in orange, *Avena sativa*; Rp, rapeseed in black, *Brassica napus*) in Helsinki. (a) Typical windfleck calculated using average windfleck duration and intensity for each species ( $n = 828\text{--}2675$ ). The shape of the windfleck followed a normal density distribution. (b) Average windfleck intensity relative to the irradiance at the top of the canopy. Crossed areas show the relative baseline irradiance. (c) Reconstructed time series of typical windflecks accounting for sunfleck duration and average time interval between windfleck. Windfleck intensities were normalized to the most intense windfleck (in barley).

( $R = -0.91$ ,  $P = 0.09$ ) in the crops, but not among the tree species ( $P > 0.37$ , Fig. 7c–f).

We found correlations between windfleck properties and architecture in the crop fields. Among the crop canopies, plant height was negatively correlated with windfleck duration ( $R = -0.93$ ,  $P = 0.07$ , Fig. 8a). The significance of this correlation ( $P$ -value) was marginally above the threshold of 0.05. Yet,  $> 21\%$  of random pairings between plant height and windfleck duration had a  $P < 0.05$ , providing more evidence of a possible link between the two variables. This pattern was repeated but with a weaker trend for plant height and the integrated increase in PAR per windfleck (Fig. 8c). Windfleck intensity was neither correlated with plant height, leaf length nor width ( $P > 0.25$ ), but leaf length was positively related to the integrated increase in PAR per windfleck ( $R = 0.96$ ,  $P = 0.044$ , Fig. 8f), due to similar positive trends with windfleck duration and intensity (Fig. 8d,e). By contrast, there was a negative trend between leaf width and both

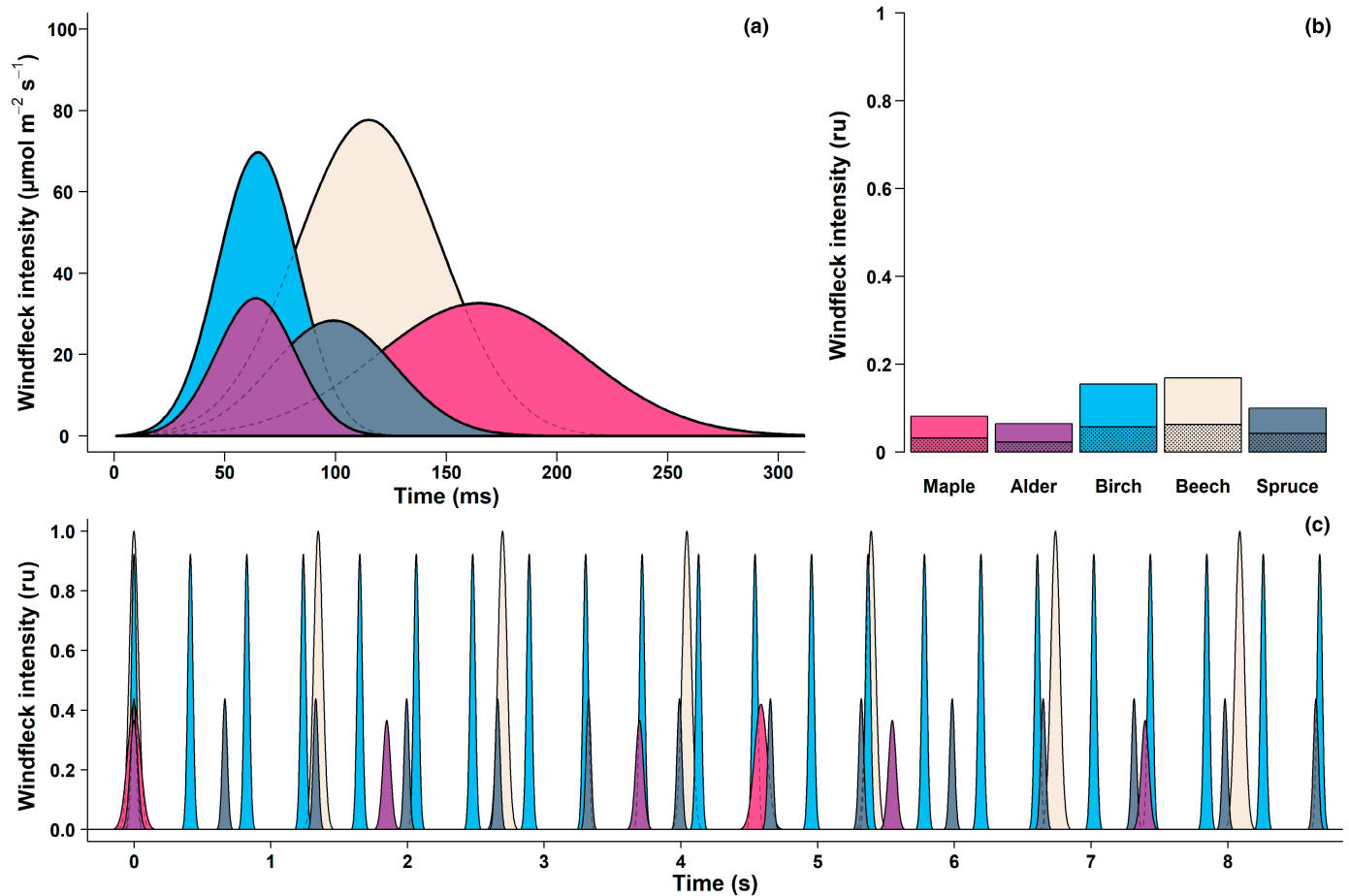
windfleck duration ( $R = -0.89$ , Fig. 8g) and the integrated increase in PAR per windfleck ( $R = -0.82$ , Fig. 8i). Overall, both the increase in plant height and wider leaves were associated with shorter windflecks.

Those relationships across the tree stands were weaker than in field crops, and often driven by a single species (e.g. the much shorter tree height of the beeches, or the much larger leaf width of the maples), which we decided not to consider in detail (see Fig. S1 for a corresponding Fig. 8 in the tree species).

## Discussion

Considerable disparity between light fluctuations in crops and forests

One of the striking differences we found regarding windflecks was that their intensity in forests was considerably lower than that



**Fig. 3** Typical windfleck properties recorded in the five forest stands (Mp, *Acer platanoides* in pink; Al, *Alnus incana* in purple; Bi, *Betula pendula* in blue; Be, *Fagus sylvatica* in white; Sp, *Picea abies* in grey) in Helsinki. (a) Typical windfleck calculated using average windfleck duration and intensity for each species ( $n = 149\text{--}4858$ ). The shape of the windfleck followed a normal density distribution. (b) Average windfleck intensity relative to the irradiance at the top of the canopy. Crossed areas show the relative baseline irradiance. (c) Reconstructed time series of typical windflecks accounting for sunfleck duration and average time interval between windfleck. Windfleck intensities were normalized to the most intense windfleck (in *F. sylvatica*).

in crops. The windfleck peak was often lower in tree canopies than the baseline irradiance in the crops (Figs 2b, 3b). Penumbra effects amplify as the distance between a gap in the canopy and ground increase; therefore, they are much more prevalent in tall forests canopies than in crops (Smith *et al.*, 1989; Pearcy, 1990). Indeed, the least intense windflecks were recorded in the spruce canopy which is highly clumped, and less susceptible to wind, with its more rigid needle-shaped leaves (Table 2). While this result has been predicted, from measurements in a soybean (*Glycine max*, L.) canopy (Percy *et al.*, 1990), to our knowledge, our study is the first systematic examination and quantification of this pattern. It should be noted that our measurements in crops were performed within the canopy, but further below in the trees. We could expect higher windfleck intensity when measuring within the tree canopy (Fig. 6). Percy *et al.* (1990) also found windflecks in soybean canopies to be shorter and more frequent than those in forest understories. Here, we showed that this pattern is not consistent among field crops, rather windfleck duration, and frequency seem to be species-specific (Table 2), although an assessment of genotypic variation is needed before a definitive

conclusion can be reached. This finding is somewhat unexpected, as the woody stems of trees make them more resistant to wind. Instead, the biomechanics of the petioles in trees seem to play as much of a role as the stems of crops, in determining duration and frequency of light fluctuations.

There is a dearth of studies investigating the diversity of light fluctuation patterns in plant canopies. Kaiser *et al.* (2018) found 10 times more sunflecks in Durum wheat (*Triticum durum*, Desf.) than in white mustard (*Sinapis alba*, L.) during the same time period: these sunflecks were also longer and more intense. A comparison of sunflower (*Helianthus annuus*, L.), wheat (*Triticum aestivum*, L.), and maize (*Zea mays*, L.) canopies detected only marginal differences (Peressotti *et al.*, 2001). There are some differences between those windfleck properties among oat, barley and broad bean canopies reported here, and in our previous study (Durand *et al.*, 2021a), yet we used the same method to detect windflecks in both studies. In summer 2020, we found windflecks in the barley canopy to be more intense, shorter, and less frequent than in the oat canopy, similar to our current results. However, while in 2020 the broad bean canopy generated

**Table 3** Summary of windfleck spectral composition in crop fields (*Hordeum vulgare*, *Vicia faba*, *Avena sativa*, and *Brassica napus*) and tree stands (*Acer platanoides*, *Alnus incana*, *Betula pendula*, *Fagus sylvatica*, and *Picea abies*) in Helsinki.

Species	UV-A : PAR			Blue : Green			Blue : Red			Red : Far-red		
	Baseline	Peak	P	Baseline	Peak	P	Baseline	Peak	P	Baseline	Peak	P
	<i>Hordeum vulgare</i>	0.158 ± 0.001 f	0.123 ± 0.001 d	< 0.001	0.996 ± 0.002 h	0.940 ± 0.001 h	< 0.001	1.559 ± 0.009 e	1.309 ± 0.005 e	< 0.001	1.037 ± 0.005 f	1.208 ± 0.003 h
<i>Vicia faba</i>	0.138 ± 0.001 e	0.123 ± 0.001 d	< 0.001	0.909 ± 0.001 e	0.897 ± 0.001 e	< 0.001	1.451 ± 0.005 d	1.325 ± 0.004 d	< 0.001	0.757 ± 0.005 d	0.907 ± 0.005 d	< 0.001
<i>Avena sativa</i>	0.130 ± 0.001 d	0.109 ± 0.001 b	< 0.001	0.917 ± 0.001 f	0.892 ± 0.001 e	< 0.001	1.384 ± 0.008 c	1.237 ± 0.006 bc	< 0.001	0.907 ± 0.009 e	1.075 ± 0.007 f	< 0.001
<i>Brassica napus</i>	0.123 ± 0.000 c	0.112 ± 0.000 c	< 0.001	0.875 ± 0.000 c	0.877 ± 0.000 c	0.058	1.285 ± 0.002 b	1.233 ± 0.001 b	< 0.001	0.895 ± 0.003 e	1.020 ± 0.003 e	< 0.001
<i>Acer platanoides</i>	0.127 ± 0.003 cd	0.117 ± 0.002 c	<b>0.012</b>	0.832 ± 0.003 b	0.846 ± 0.002 b	<b>0.021</b>	1.468 ± 0.023 d	1.247 ± 0.012 bc	< 0.001	0.918 ± 0.136 e	1.287 ± 0.173 i	< 0.001
<i>Alnus incana</i>	0.160 ± 0.001 f	0.138 ± 0.001 e	< 0.001	0.900 ± 0.001 d	0.888 ± 0.001 d	< 0.001	1.732 ± 0.010 g	1.399 ± 0.006 e	< 0.001	0.283 ± 0.005 a	0.478 ± 0.006 a	< 0.001
<i>Betula pendula</i>	0.174 ± 0.001 g	0.149 ± 0.001 f	< 0.001	0.937 ± 0.001 g	0.921 ± 0.001 g	< 0.001	1.660 ± 0.005 f	1.440 ± 0.004 f	< 0.001	0.468 ± 0.003 b	0.652 ± 0.004 b	< 0.001
<i>Fagus sylvatica</i>	0.067 ± 0.001 a	0.087 ± 0.001 a	< 0.001	0.715 ± 0.006 a	0.816 ± 0.003 a	< 0.001	1.181 ± 0.008 a	1.138 ± 0.004 a	< 0.001	0.491 ± 0.014 c	0.759 ± 0.013 c	< 0.001
<i>Picea abies</i>	0.085 ± 0.001 b	0.090 ± 0.001 a	<b>0.022</b>	0.915 ± 0.002 f	0.905 ± 0.002 f	<b>0.002</b>	1.289 ± 0.009 b	1.258 ± 0.015 c	<b>0.033</b>	1.031 ± 0.011 f	1.130 ± 0.010 g	< 0.001

Values for windfleck peaks and baselines are given (means ± SD), as the statistical significance of changes in spectral composition between the baseline and the peak of the windfleck for each species (P). Letters represent statistically significant differences between species tested by *post hoc* pairwise comparisons (P < 0.05). P values are given, in bold when significant. UV-A, 315–400 nm; PAR, 400–700 nm; blue, 420–490 nm; green, 500–570 nm; red, 620–680 nm; far-red, 700–750 nm.

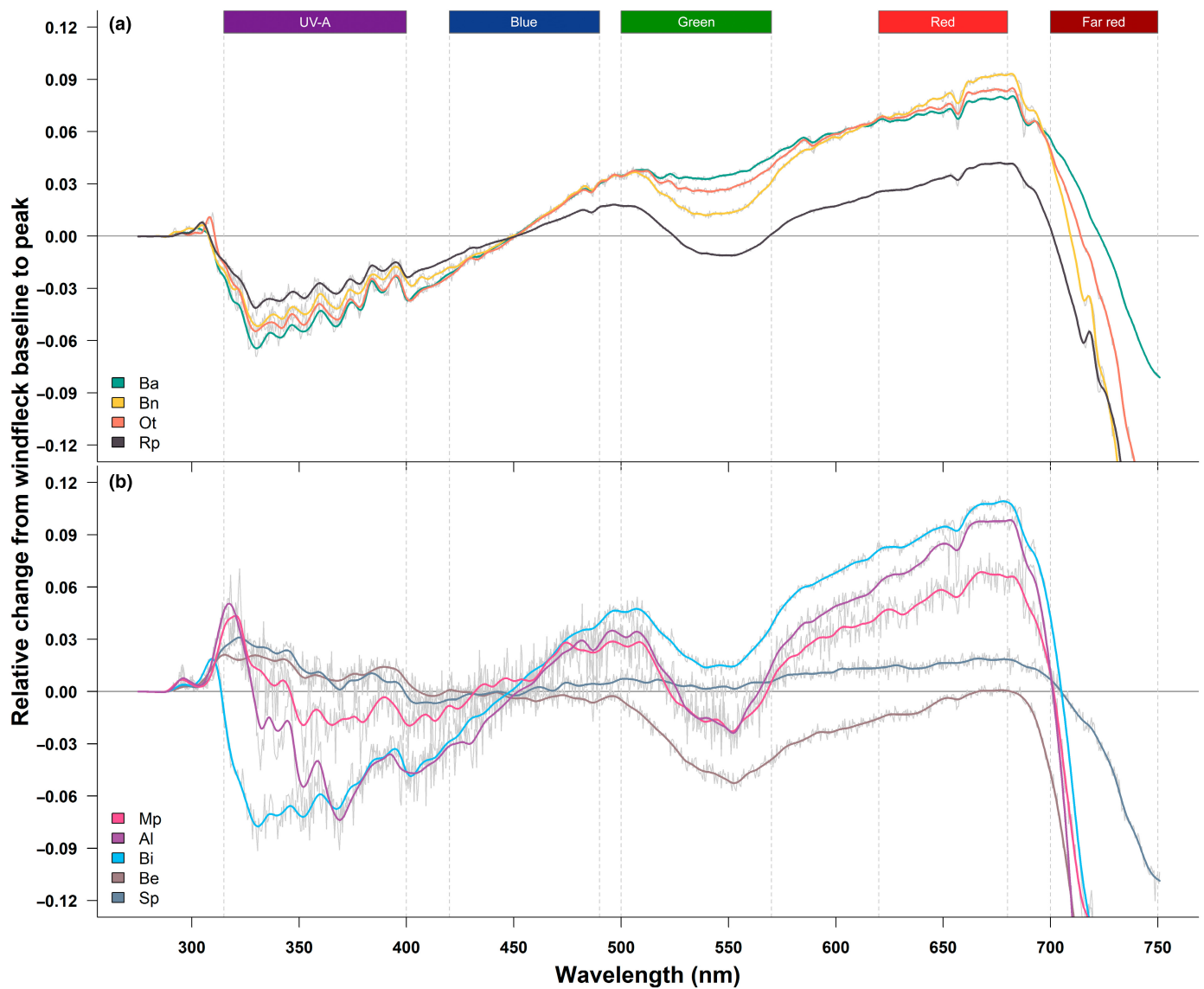
windflecks with the highest intensity, duration, and frequency, measurements from 2021 found broad beans to have the lowest intensity, duration, and frequency (Table 2, Durand *et al.*, 2021a). Differences in the stage of canopy development at the time of measurement may be partially responsible for the inconsistency between the measurements in the two consecutive years, as the barley and oats canopies were planted 6 and 8 d later, respectively, but the beans were planted 15 d earlier, in 2021 than in 2020. This meant that at the time of measurement the bean canopy was nearly 20 cm taller, switching from the shortest crop in 2020, to the tallest crop in 2021. A time course of measurements in a common bean (*Phaseolus vulgaris*, L.) canopy found windflecks to become shorter as the canopy grew taller (Barradas *et al.*, 1998). Across a vertical gradient mimicking an increase in canopy height, we found a similar pattern of windflecks becoming less intense, and less frequent further away from the top of the canopy (see Fig. 5). A better understanding of the impact of plant height and depth in the canopy on the property of light flecks would be gained if future studies focus on genotypic variability in plant height, and developmental stages.

### Canopy-dependent changes in spectral irradiance of windflecks

Since a full record of spectral irradiance can be accessed for each time-point of the time series we used to detect windflecks, we could specifically examine the change in spectral composition during a windfleck. Comparison of regions of the spectrum allowed for smaller, but more precise, differences between the baseline and the peak of the windfleck to be identified, than was possible from comparing only the spectral integral, that is, PAR (e.g. as in Durand *et al.*, 2021a).

Spectral composition of solar radiation in the canopy can be highly variable (Hartikainen *et al.*, 2018; Hovi & Rautiainen, 2020). In part, this depends not only on the structural and biochemical composition of the leaves affecting their optical properties (Gates, 1965), but also on canopy properties such as leaf area and angle (Asner, 1998). These features partly explain the diversity of spectral composition we found between canopies. The B : R and R : FR spectral photon ratios we recorded were higher than those reported in Hertel *et al.* (2011), although in both studies, the ratios were higher in the spruce than in the beech canopy. While generally windflecks provide disproportionately more blue and red light within canopies as shade is depleted in these wavelengths, we found that changes in spectral composition during a windfleck were characteristic to each canopy type. This means that differences in spectral composition, resulting from overstorey structure and species with different leaf optical properties, could be detected during a windfleck. This could differentially affect those understory species that are thought to exploit the brief fluctuating irradiances provided by windflecks for photosynthesis, with the efficiency of this process depending on spectral composition (Brodersen & Vogelmann, 2010; Smith *et al.*, 2017).

Our results support our assertion that light fluctuations in natural environments should be considered along with variations in

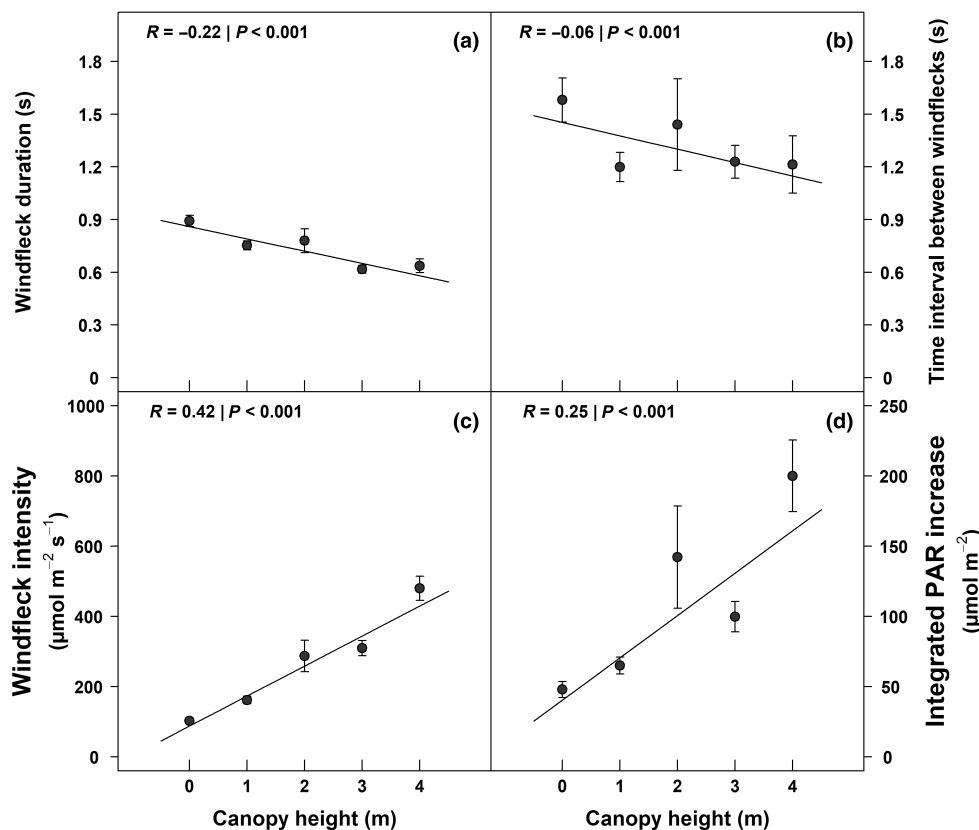


**Fig. 4** Relative change in spectral composition during a windfleck in four crop fields (a; Ba, barley in green, *Hordeum vulgare*; Bn, bean in yellow, *Vicia faba*; Ot, oat in orange, *Avena sativa*; Rp, rapeseed in black, *Brassica napus*) and five forest stands (b; Mp, *Acer platanoides* in pink; Al, *Alnus incana* in purple; Bi, *Betula pendula* in blue; Be, *Fagus sylvatica* in brown; Sp, *Picea abies* in grey) measured in Helsinki. Peak and baseline spectral irradiance were normalized to 450 nm (wavelength where irradiance was highest) to highlight differences in spectral composition rather than the amount of radiation. The curve shown here is the difference between the peak and baseline of normalized spectral irradiance. Positive values reflect an increase at each wavelength during a windfleck, whereas negative values reflect a decrease. We applied a smoothing spline (in color) to each curve (in grey) to emphasize general trends. The wavebands used to calculate spectral ratios in the main text are shown at the top of the figure.

spectral composition. While the potential physiological effects these changes have on photosynthesis remain to be determined. To our knowledge, there is no study that investigates whether diffuse light, coming from all directions and enriched in green and far-red light, penetrates as deeply in the mesophyll than (mostly unidirectional) direct solar radiation enriched in blue and red light. The pertinence of this question also depends on the location and alignment of chloroplasts which will condition the potential to use light at various depth in the mesophyll. These differences in spectral composition may also more generally affect their phenology and development (Wang *et al.*, 2020; Brelsford

*et al.*, 2022); factors which ultimately limit species' spatial distribution. Combinations of species in agroforestry systems, where one plant grows under the shade of another, may also benefit from a specific coupling of overstorey/canopy species that, through their leaf traits and canopy architecture, creates a better light environment that provides favorable conditions for particular under-canopy species.

Generally, UV-A : PAR was lower during the peak of a windfleck than at the baseline, except in the beech and spruce canopies. This general decline is in agreement with evidence of lower UV-B to PAR ratio in sunflecks compared with shade (Flint &



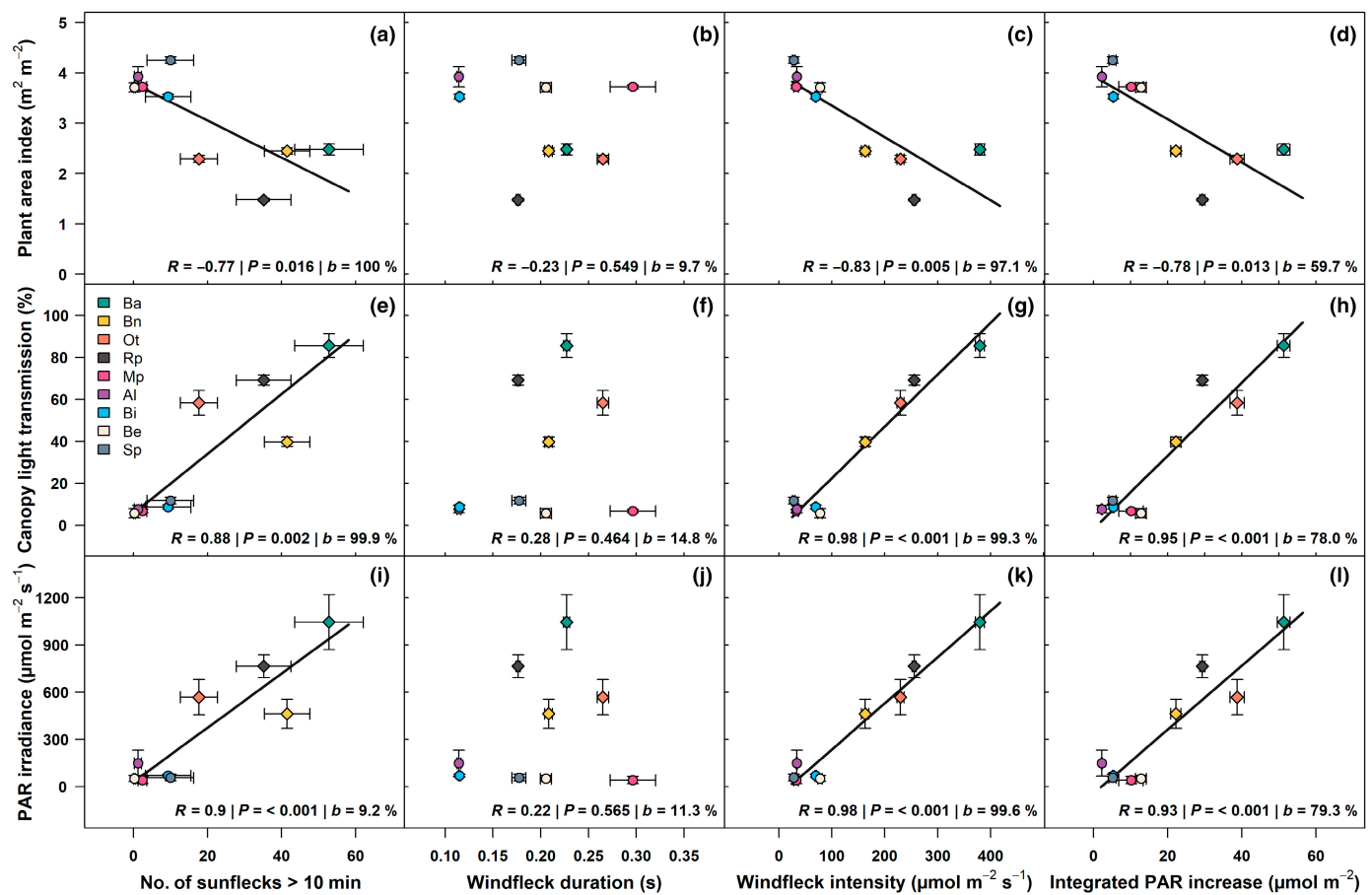
**Fig. 5** Windfleck properties along a vertical gradient recorded in a *Fagus sylvatica* stand in Helsinki. Windfleck duration (a) average time interval (b), intensity (c), and integrated increase in PAR irradiance due to the windfleck (d) were recorded at every meter from the ground to 4 m high. Values are means  $\pm$  SE of measurements at seven locations in the stand. Pearson correlation coefficient and  $P$ -values are reported.

Caldwell, 2002; Hartikainen *et al.*, 2018; Burgess *et al.*, 2021; Durand *et al.*, 2021a). Moreover, the ratio of UV over PAR commonly increases with height in the canopy (Yang *et al.*, 1993; Grant, 1997; Deckmyn *et al.*, 2001; Burgess *et al.*, 2021). This could be partly attributable to a higher relative absorption of UV radiation than PAR by leaves, leading to a larger increase in UV than PAR with height in the canopy (Day *et al.*, 1994; Grant *et al.*, 2003). This would mean that the effect of a sunfleck on UV : PAR would be different at the top and bottom of a canopy. A higher scattering probability of shortwave radiation (e.g. UV-B, UV-A, and blue light) in the atmosphere (Durand *et al.*, 2021b), results in diffuse light that is enriched in UV radiation compared with direct light (Flint & Caldwell, 2002). At the top of the canopy, the direct and diffuse radiation incident on leaves is mainly scattered by the atmosphere, and coming from all directions of the sky. This results in relatively high UV : PAR. By contrast, the light incident on leaves during a windfleck at the bottom of a canopy mainly originates from a direction close to the solar disc, where UV radiation is comparatively depleted. In all the canopies, we measured, B : R always decreased during a windfleck (Table 3), but increase with height (Hertel *et al.*, 2011), suggesting a similar impact of differential scattering. This can have meaningful consequences for the functional traits, survival, and thus community composition of understory and

overstorey vegetation. A large array of leaf traits are regulated by UV and blue light (Siipola *et al.*, 2015; Wang *et al.*, 2020), via photoreceptors such as phototropins, cryptochromes, and UVR8 (Rai *et al.*, 2019), and may impact cross-tolerance to stress (Jansen *et al.*, 2019), and even affect flowers and fruit visibility to animals (Endler, 1993).

#### How canopy architecture shapes the light fluctuations within

As a canopy gets denser and darker, sunflecks become less frequent, and windflecks intensity fades (Fig. 1). This diminishes the potential photosynthetic gains from light fluctuations, because a higher proportion of the total available light will come in the form of shade, rather than transient patches of high light. This is especially the case at the bottom of a canopy, where windfleck intensity is reduced compared with the upper layers (Fig. 5). Because they are acclimated to shade, leaves in the lower tree canopy also tend to become light saturated more readily under high light (Boardman, 1977; Earles *et al.*, 2017). Their acclimation to low irradiance involves a physiological trade-off that leaves them slower to react to a change in light conditions (Durand *et al.*, 2022). These factors reduce their capacity to use flecks of light efficiently. Yet, shade light is of lower spectral



**Fig. 6** Correlations between canopy architectural traits and windfleck properties in four crop fields (Ba, barley in green, *Hordeum vulgare*; Bn, bean in yellow, *Vicia faba*; Ot, oat in orange, *Avena sativa*; Rp, rapeseed in black, *Brassica napus*) and five forest stands (Mp, *Acer platanoides* in pink; Al, *Alnus incana* in purple; Bi, *Betula pendula* in blue; Be, *Fagus sylvatica* in white; Sp, *Picea abies* in grey) measured in Helsinki. Plant area index (a–d), canopy light transmission (e–h), and median PAR irradiance (i–l) were correlated with the number of sunfleck longer than 10 min (a, e, i), windfleck duration (b, f, j), intensity (c, g, k) and integrated increase in PAR irradiance due to the windfleck (d, h, l). Values are means  $\pm$  SE. Pearson correlation coefficient,  $P$ -values, and the percent of  $P$ -values  $<$  0.05 in the bootstrap analysis ( $b$ -value) are reported.

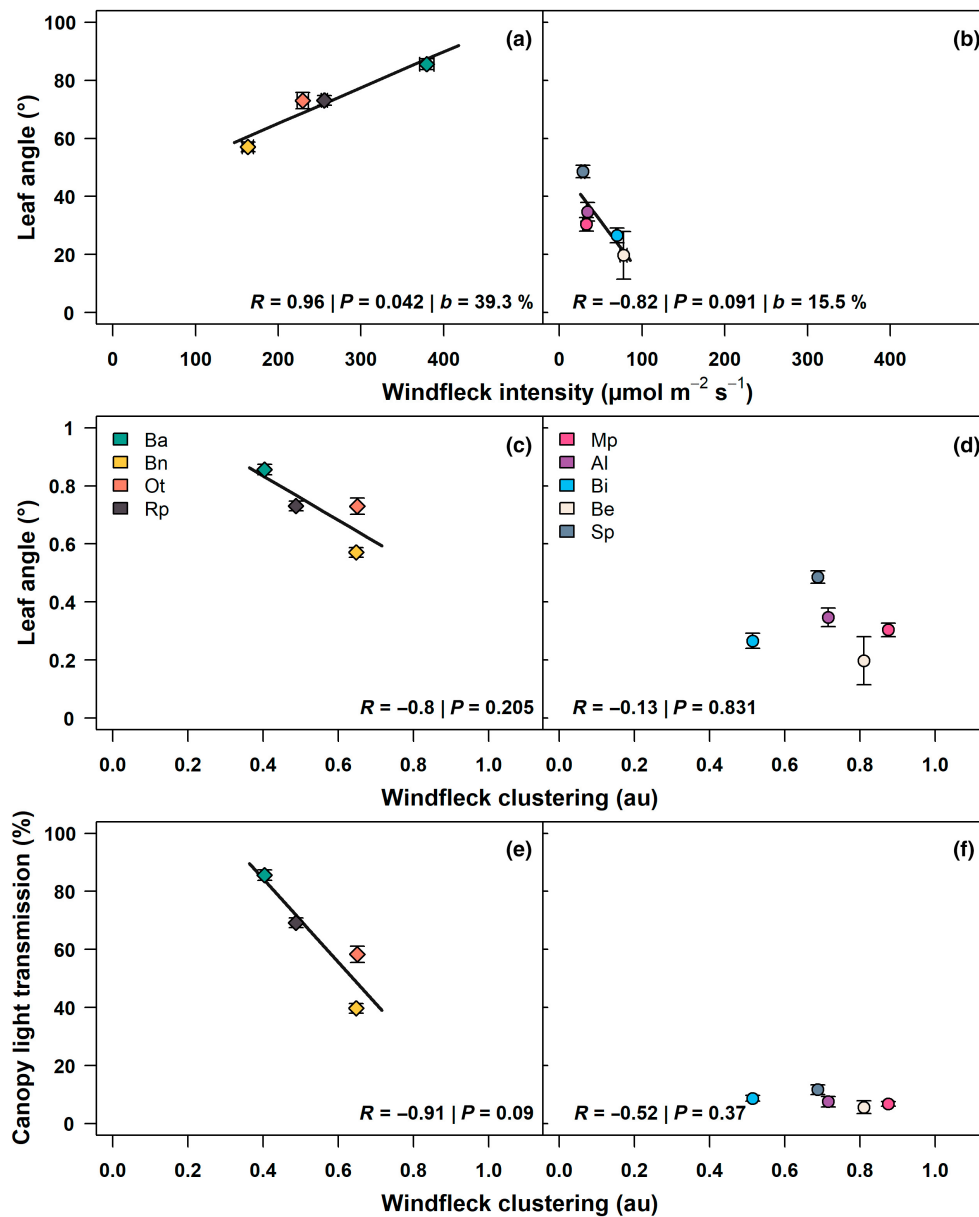
quality as well as lower irradiance level, because it is enriched in green and far-red wavelengths that are absorbed less efficiently by chlorophylls (Terashima *et al.*, 2009), and it is more diffuse, thus penetrates the mesophyll less deeply than direct light (Cui *et al.*, 1991; Gorton *et al.*, 2010). As an example, blue gum (*Eucalyptus tereticornis*, Sm.) trees often have a sparse canopy, which allows lower leaves to maintain an induced photosynthetic machinery and benefit from sunflecks (Campany *et al.*, 2016), whereas the lower leaves of beech trees, acclimated to deep shade, have a reduced photosynthetic capacity and are slower to respond to an increase of irradiance compared with sun leaves (Durand *et al.*, 2022). Whether leaves prioritize temporary bursts of high light, or the more reliable but lower quality shade light will likely depend on the species' physiology contingent on its functional strategy, and its canopy architecture which creates the spatial light fluctuations in the first place.

A greater leaf width in the crops was related to shorter windflecks. We know that greater leverage is gained when a force is exerted at a longer distance from a fulcrum (the support about which a lever turns, see the law of levers; Davidovits, 2008).

Therefore, it is possible that wider leaves flutter more rapidly around the midrib, creating faster fluctuations of irradiance. In crops, canopies with a larger leaf angle were associated with more intense windflecks, but in contrast this trait in tree canopies led to windflecks of reduced intensity. The larger leaf angles of crop canopies would lead to larger gaps in the canopy, increasing the penetration of direct light (Falster & Westoby, 2003). Such an effect may not occur in canopies with a more planophile leaf orientation (such as our tree canopies), and where an increase in leaf angle may tilt the leaves in the direction of the sun, actually reducing canopy gaps (van Zanten *et al.*, 2010).

## Conclusion

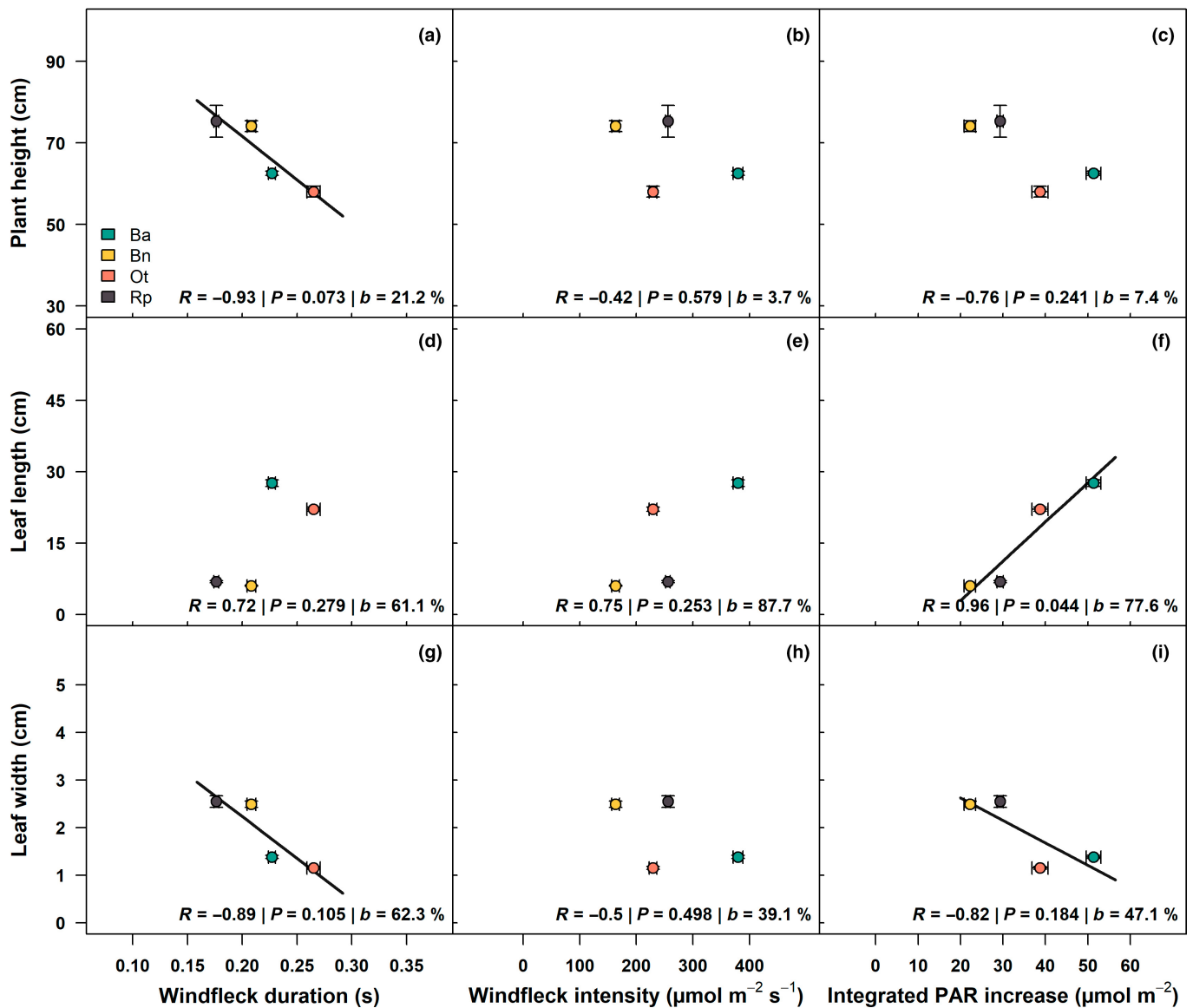
Most studies of photosynthesis are done under steady light conditions, especially those in controlled environments. This means that we lack knowledge of natural patterns of light fluctuations, how canopy architecture affects them, and related plant responses. This research is needed if we want to better apply laboratory findings to the field, and find ways to improve canopy



**Fig. 7** Canopy-specific correlations between architectural traits and windfleck properties in four crop fields (a, c, e; Ba, barley in green, *Hordeum vulgare*; Bn, bean in yellow, *Vicia faba*; Ot, oat in orange, *Avena sativa*; Rp, rapeseed in black, *Brassica napus*) and five forest stands (b, d, f; Mp, *Acer platanoides* in pink; Al, *Alnus incana* in purple; Bi, *Betula pendula* in blue; Be, *Fagus sylvatica* in white; Sp, *Picea abies* in grey) measured in Helsinki. Leaf angle (a–d) and canopy light transmission (e, f) were correlated with windfleck intensity (a, b) and clustering (c–f). Values are means  $\pm$  SE Pearson correlation coefficient,  $P$ -values, and the percent of  $P$ -values  $< 0.05$  in the bootstrap analysis ( $b$ -value) are reported. Windfleck clustering was calculated over the whole measurement period, as such they could not be included in bootstrap analyses.

photosynthesis. In this study, we described the diversity of light fluctuation occurring in plant canopies, and outlined major differences between crops and forest windflecks. While this study considered only one genotype per species, there is some evidence of intraspecific variability (Burgess *et al.*, 2021), but further research is needed to assess its extent. We found that the change in spectral composition during a windfleck is dependent on the species that forms the canopy, and that canopy density and architecture affect the properties of light fluctuations. Leaf morphology seemed to play an important role in creating different types of light fluctuations.

Although this study found that short fluctuations are omnipresent in all types of canopies, one should not consider inconsequential those longer changes in light ( $> 1$  min), that may stimulate other processes such as stomatal movements. Fluctuations in light have a certain fractal quality whereby rapid fluctuations are nested within longer changes, each driving different processes that affect the overall dynamics of photosynthesis. Still, the ubiquitous nature of windflecks provides a strong incentive to better understand the biomechanics of wind-induced leaf movements, and their consequence for photosynthesis. This will require a combined approach, to



**Fig. 8** Crop-specific correlations between architectural traits and windfleck properties (Ba, barley in green, *Hordeum vulgare*; Bn, bean in yellow, *Vicia faba*; Ot, oat in orange, *Avena sativa*; Rp, rapeseed in black, *Brassica napus*) measured in Helsinki. Plant height (a–c), leaf length (d–f) and width (g–i) were correlated with windfleck duration (a, d, g), intensity (b, e, h), and integrated increase in PAR irradiance due to the windfleck (c, f, i). Values are means  $\pm$  SE. Pearson correlation coefficient,  $P$ -values, and the percent of  $P$ -values  $<$  0.05 in the bootstrap analysis ( $b$ -value) are reported.

disentangle the complex interaction between wind patterns, the biomechanics of plant movements, and the resulting the light fluctuations in plant canopies, to grasp the benefits of them dancing in the wind.

### Acknowledgements

The authors would like to acknowledge the Viikki Experimental Farm, and Viikki Greenhouse and Field Trials for providing planting and maintaining the fields for this experiment. We would like to thank Baiba Matule for their technical help, and Anna Lintunen for reviewing a previous version of this manuscript. This research was funded by Academy of Finland decision nos. 351008 and 324555.

### Competing interests

None declared.

### Author contributions

MD and TMR contributed to the data collection, experimental design, the data analysis, and interpretation. Both authors contributed to the writing of the manuscript.

### ORCID

Maxime Durand  <https://orcid.org/0000-0002-8991-3601>  
T. Matthew Robson  <https://orcid.org/0000-0002-8631-796X>

## Data availability

The data that support the findings of this study are available in the [Supporting Information](#) of this article. More information is available upon request.

## References

- Allen MT, Percy RW. 2000. Stomatal versus biochemical limitations to dynamic photosynthetic performance in four tropical rainforest shrub species. *Oecologia* 122: 479–486.
- Aphalo PJ. 2015. The r4photobiology suite. *UV4Plants Bulletin* 2015: 21–29.
- Aphalo PJ, Ylianttila L. 2022. R package: oacquire: acquire data from OO Spectrometers. [WWW document] URL <https://docs.r4photobiology.info/oacquire/>, <https://github.com/aphalo/oacquire> [accessed 27 February 2023].
- Asner GP. 1998. Biophysical and biochemical sources of variability in canopy reflectance. *Remote Sensing of Environment* 64: 234–253.
- Asseng S, Ewert F, Martre P, Rötter RP, Lobell DB, Cammarano D, Kimball BA, Ottman MJ, Wall GW, White JW *et al.* 2014. Rising temperatures reduce global wheat production. *Nature Climate Change* 5: 143–147.
- Atkins WRG, Poole HH. 1937. The measurement of the intensity and the colour of light in woods by means of emission and rectifier photoelectric cells. *Proceedings of the Royal Society B: Biological Sciences* 121: 427–450.
- Barradas VL, Jones HG, Clark JA. 1998. Sunfleck dynamics and canopy structure in a *Phaseolus vulgaris* L. canopy. *International Journal of Biometeorology* 42: 34–43.
- Boardman NK. 1977. Comparative photosynthesis of sun and shade plants. *Annual Review of Plant Physiology* 28: 355–377.
- Brelsford CC, Trasser M, Paris T, Hartikainen SM, Robson TM. 2022. Understorey light quality affects leaf pigments and leaf phenology in different plant functional types. *Physiologia Plantarum* 174: e13723.
- Broderson CR, Vogelmann TC. 2010. Do changes in light direction affect absorption profiles in leaves? *Functional Plant Biology* 37: 403.
- Burgess AJ, Durand M, Gibbs JA, Retkute R, Robson TM, Murchie EH. 2021. The effect of canopy architecture on the patterning of "windflecks" within a wheat canopy. *Plant, Cell & Environment* 44: 3524–3537.
- Burgess AJ, Retkute R, Herman T, Murchie EH. 2017. Exploring relationships between canopy architecture, light distribution, and photosynthesis in contrasting rice genotypes using 3D canopy reconstruction. *Frontiers in Plant Science* 8: 734.
- Burgess AJ, Retkute R, Preston SP, Jensen OE, Pound MP, Pridmore TP, Murchie EH. 2016. The 4-dimensional plant: effects of wind-induced canopy movement on light fluctuations and photosynthesis. *Frontiers in Plant Science* 7: 1392.
- Campany CE, Tjoelker MG, von Caemmerer S, Duursma RA. 2016. Coupled response of stomatal and mesophyll conductance to light enhances photosynthesis of shade leaves under sunflecks. *Plant, Cell & Environment* 39: 2762–2773.
- Chazdon RL, Percy RW. 1991. The importance of sunflecks for forest understory plants. *Bioscience* 41: 760–766.
- Chen JM, Cihlar J. 1995. Quantifying the effect of canopy architecture on optical measurements of leaf area index using two gap size analysis methods. *IEEE Transactions on Geoscience and Remote Sensing* 33: 777–787.
- Cui M, Vogelmann TC, Smith WK. 1991. Chlorophyll and light gradients in sun and shade leaves of *Spinacia oleracea*. *Plant, Cell & Environment* 14: 493–500.
- Davidovits P. 2008. *Physics in biology and medicine*. London, UK: Academic Press.
- Day TA, Howells BW, Rice WJ. 1994. Ultraviolet absorption and epidermal-transmittance spectra in foliage. *Physiologia Plantarum* 92: 207–218.
- Deckmyn G, Cayenberghs E, Ceulemans R. 2001. UV-B and PAR in single and mixed canopies grown under different UV-B exclusions in the field. *Plant Ecology* 154: 123–133.
- Durand M, Brendel O, Buré C, Courtois P, Lily J-B, Granier A, Thiec DL. 2020. Impacts of a partial rainfall exclusion in the field on growth and transpiration: consequences for leaf-level and whole-plant water-use efficiency compared to controlled conditions. *Agricultural and Forest Meteorology* 282–283: 107873.
- Durand M, Matule B, Burgess AJ, Robson TM. 2021a. Sunfleck properties from time series of fluctuating light. *Agricultural and Forest Meteorology* 308–309: 108554.
- Durand M, Murchie EH, Lindfors AV, Urban O, Aphalo PJ, Robson TM. 2021b. Diffuse solar radiation and canopy photosynthesis in a changing environment. *Agricultural and Forest Meteorology* 311: 108684.
- Durand M, Stangl ZR, Salmon Y, Burgess AJ, Murchie EH, Robson TM. 2022. Sunflecks in the upper canopy: dynamics of light-use efficiency in sun and shade leaves of *Fagus sylvatica*. *New Phytologist* 235: 1365–1378.
- Earles JM, Theroux-Rancourt G, Gilbert ME, McElrone AJ, Brodersen CR. 2017. Excess diffuse light absorption in upper mesophyll limits CO<sub>2</sub> drawdown and depresses photosynthesis. *Plant Physiology* 174: 1082–1096.
- Ender JA. 1993. The color of light in forests and its implications. *Ecological Monographs* 63: 1–27.
- Evans GC. 1956. An area survey method of investigating the distribution of light intensity in woodlands, with particular reference to sunflecks. *Journal of Ecology* 44: 391–428.
- Falster DS, Westoby M. 2003. Leaf size and angle vary widely across species: what consequences for light interception? *New Phytologist* 158: 509–525.
- Flint SD, Caldwell MM. 2002. Solar UV-B and visible radiation in tropical forest gaps: measurements partitioning direct and diffuse radiation. *Global Change Biology* 4: 863–870.
- Fox J, Weisberg S. 2019. *An R companion to applied regression*. Thousand Oaks, CA, USA: Sage.
- Gates DM. 1965. Spectral properties of plants. *Applied Optics* 4: 11–20.
- Gorton HL, Brodersen CR, Williams WE, Vogelmann TC. 2010. Measurement of the optical properties of leaves under diffuse light. *Photochemistry and Photobiology* 86: 1076–1083.
- Grant RH. 1997. Partitioning of biologically active radiation in plant canopies. *International Journal of Biometeorology* 40: 26–40.
- Grant RH, Heisler GM, Gao W, Jenks M. 2003. Ultraviolet leaf reflectance of common urban trees and the prediction of reflectance from leaf surface characteristics. *Agricultural and Forest Meteorology* 120: 127–139.
- Hartikainen SM, Jach A, Grane A, Robson TM. 2018. Assessing scale-wise similarity of curves with a thick pen: as illustrated through comparisons of spectral irradiance. *Ecology and Evolution* 8: 10206–10218.
- Hertel C, Leuchner M, Menzel A. 2011. Vertical variability of spectral ratios in a mature mixed forest stand. *Agricultural and Forest Meteorology* 151: 1096–1105.
- Hothorn T, Bretz F, Westfall P. 2008. Simultaneous inference in general parametric models. *Biometrical Journal* 50: 346–363.
- Hovi A, Rautiainen M. 2020. Spectral composition of shortwave radiation transmitted by forest canopies. *Trees* 34: 1499–1506.
- Hubbart S, Smillie IRA, Heatley M, Swarup R, Foo CC, Zhao L, Murchie EH. 2018. Enhanced thylakoid photoprotection can increase yield and canopy radiation use efficiency in rice. *Communications Biology* 1: 22.
- Jansen MAK, Bilger W, Hideg E, Strid A, Participants UVPW, Urban O. 2019. Editorial: interactive effects of UV-B radiation in a complex environment. *Plant Physiology and Biochemistry* 134: 1–8.
- Kaiser E, Morales A, Harbinson J. 2018. Fluctuating light takes crop photosynthesis on a rollercoaster ride. *Plant Physiology* 176: 977–989.
- Kaiser E, Morales A, Harbinson J, Kromdijk J, Heuvelink E, Marcelis LF. 2015. Dynamic photosynthesis in different environmental conditions. *Journal of Experimental Botany* 66: 2415–2426.
- Kromdijk J, Glowacka K, Leonelli L, Gabilly ST, Iwai M, Niyogi KK, Long SP. 2016. Improving photosynthesis and crop productivity by accelerating recovery from photoprotection. *Science* 354: 857–861.
- Laisk A, Kiirats O, Oja V. 1984. Assimilatory power (post-illumination CO<sub>2</sub> uptake) in leaves: measurement, environmental dependencies, and kinetic properties. *Plant Physiology* 76: 723–729.
- Lang A. 1986. Estimation of leaf area index from transmission of direct sunlight in discontinuous canopies. *Agricultural and Forest Meteorology* 37: 229–243.
- de Langre E. 2008. Effects of wind on plants. *Annual Review of Fluid Mechanics* 40: 141–168.

- Long SP, Taylor SH, Burgess SJ, Carmo-Silva E, Lawson T, De Souza AP, Leonelli L, Wang Y. 2022. Into the shadows and back into sunlight: photosynthesis in fluctuating light. *Annual Review of Plant Biology* 73: 617–648.
- Macfarlane C, Ryu Y, Ogden GN, Sonnentag O. 2014. Digital canopy photography: exposed and in the raw. *Agricultural and Forest Meteorology* 197: 244–253.
- McAlister ED. 1939. The chlorophyll-carbon dioxide ratio during photosynthesis. *Journal of General Physiology* 22: 613–636.
- Miyashita A, Sugiura D, Sawakami K, Ichihashi R, Tani T, Tateno M. 2012. Long-term, short-interval measurements of the frequency distributions of the photosynthetically active photon flux density and net assimilation rate of leaves in a cool-temperate forest. *Agricultural and Forest Meteorology* 152: 1–10.
- Murchie EH, Kefauver S, Araus JL, Muller O, Rascher U, Flood PJ, Lawson T. 2018. Measuring the dynamic photosynthetic. *Annals of Botany* 122: 207–220.
- Murchie EH, Pinto M, Horton P. 2009. Agriculture and the new challenges for photosynthesis research. *New Phytologist* 181: 532–552.
- Murchie EH, Ruban AV. 2020. Dynamic non-photochemical quenching in plants: from molecular mechanism to productivity. *The Plant Journal* 101: 885–896.
- Nobis M, Hunziker U. 2005. Automatic thresholding for hemispherical canopy-photographs based on edge detection. *Agricultural and Forest Meteorology* 128: 243–250.
- Ort DR, Merchant SS, Alric J, Barkan A, Blankenship RE, Bock R, Croce R, Hanson MR, Hibberd JM, Long SP *et al.* 2015. Redesigning photosynthesis to sustainably meet global food and bioenergy demand. *Proceedings of the National Academy of Science, USA* 112: 8529–8536.
- Pearcy RW. 1990. Sunflecks and photosynthesis in plant canopies. *Annual Review of Plant Physiology and Plant Molecular Biology* 41: 421–453.
- Pearcy RW, Roden JS, Gamon JA. 1990. Sunfleck dynamics in relation to canopy structure in a soybean (*Glycine max* (L.) Merr.) canopy. *Agricultural and Forest Meteorology* 52: 359–372.
- Peressotti A, Marchiol L, Zerbi G. 2001. Photosynthetic photon flux density and sunfleck regime within canopies of wheat, sunflower and maize in different wind conditions. *Italian Journal of Agronomy* 4: 87–92.
- Pons TL, Pearcy RW. 1992. Photosynthesis in flashing light in soybean leaves grown in different conditions. II. Lightfleck utilization efficiency. *Plant, Cell & Environment* 15: 577–584.
- R Core Team. 2022. *R: a language and environment for statistical computing*. Vienna, Austria: R Foundation for Statistical Computing. [WWW document] URL <https://www.R-project.org/> [accessed 8 March 2023].
- Rai N, Neugart S, Yan Y, Wang F, Siipola SM, Lindfors AV, Winkler JB, Albert A, Brosche M, Lehto T *et al.* 2019. How do cryptochromes and UVR8 interact in natural and simulated sunlight? *Journal of Experimental Botany* 70: 4975–4990.
- Roden JS, Pearcy RW. 1993a. Effect of leaf flutter on the light environment of poplars. *Oecologia* 93: 201–207.
- Roden JS, Pearcy RW. 1993b. Photosynthetic gas exchange response of poplars to steady-state and dynamic light environments. *Oecologia* 93: 208–214.
- Sassenrath-Cole GF, Pearcy RW. 1992. The role of ribulose-1,5-bisphosphate regeneration in the induction requirement of photosynthetic CO<sub>2</sub> exchange under transient light conditions. *Plant Physiology* 99: 227–234.
- Sassenrath-Cole GF, Pearcy RW. 1994. Regulation of photosynthetic induction state by the magnitude and duration of low light exposure. *Plant Physiology* 105: 1115–1123.
- Schleppi P, Conedera M, Sedivy I, Thimonier A. 2007. Correcting non-linearity and slope effects in the estimation of the leaf area index of forests from hemispherical photographs. *Agricultural and Forest Meteorology* 144: 236–242.
- Searle SR, Speed FM, Milliken GA. 1980. Population marginal means in the linear model: an alternative to least squares means. *The American Statistician* 34: 216–221.
- Siipola SM, Kotilainen T, Sipari N, Morales LO, Lindfors AV, Robson TM, Aphalo PJ. 2015. Epidermal UV-A absorbance and whole-leaf flavonoid composition in pea respond more to solar blue light than to solar UV radiation. *Plant, Cell & Environment* 38: 941–952.
- Slattery RA, Walker BJ, Weber APM, Ort DR. 2018. The impacts of fluctuating light on crop performance. *Plant Physiology* 176: 990–1003.
- Smith HL, McAusland L, Murchie EH. 2017. Don't ignore the green light: exploring diverse roles in plant processes. *Journal of Experimental Botany* 68: 2099–2110.
- Smith WK, Berry ZC. 2013. Sunflecks? *Tree Physiology* 33: 233–237.
- Smith WK, Knapp AK, Reiners WA. 1989. Penumbra effects on sunlight penetration in plant communities. *Ecology* 70: 1603–1609.
- Tanaka Y, Adachi S, Yamori W. 2019. Natural genetic variation of the photosynthetic induction response to fluctuating light environment. *Current Opinion in Plant Biology* 49: 52–59.
- Taylor SH, Gonzalez-Escobar E, Page R, Parry MAJ, Long SP, Carmo-Silva E. 2022. Faster than expected Rubisco deactivation in shade reduces cowpea photosynthetic potential in variable light conditions. *Nature Plants* 8: 118–124.
- Terashima I, Fujita T, Inoue T, Chow WS, Oguchi R. 2009. Green light drives leaf photosynthesis more efficiently than red light in strong white light: revisiting the enigmatic question of why leaves are green. *Plant & Cell Physiology* 50: 684–697.
- Thimonier A, Sedivy I, Schleppi P. 2010. Estimating leaf area index in different types of mature forest stands in Switzerland: a comparison of methods. *European Journal of Forest Research* 129: 543–562.
- Vines HM, Tu ZP, Armitage AM, Chen SS, Black CC. 1983. Environmental responses of the post-lower illumination CO<sub>2</sub> burst as related to leaf photorespiration. *Plant Physiology* 73: 25–30.
- Wang QW, Robson TM, Pieristè M, Oguro M, Oguchi R, Murai Y, Kurokawa H, Cao KF. 2020. Testing trait plasticity over the range of spectral composition of sunlight in forb species differing in shade tolerance. *Journal of Ecology* 108: 1923–1940.
- Way DA, Pearcy RW. 2012. Sunflecks in trees and forests: from photosynthetic physiology to global change biology. *Tree Physiology* 32: 1066–1081.
- Yang X, Miller DR, Montgomery ME. 1993. Vertical distributions of canopy foliage and biologically active radiation in a defoliated/refoliated hardwood forest. *Agricultural and Forest Meteorology* 67: 129–146.
- Ylianttila L, Visuri R, Huurto L, Jokela K. 2007. Evaluation of a single-monochromator diode array spectroradiometer for sunbed UV-radiation measurements. *Photochemistry and Photobiology* 81: 333–341.
- van Zanten M, Pons TL, Janssen JAM, Voeselek LACJ, Peeters AJM. 2010. On the relevance and control of leaf angle. *Critical Reviews in Plant Sciences* 29: 300–316.
- Zeiger E, Iino M, Ogawa T. 1985. The blue light response of stomata: pulse kinetics and some mechanistic implications. *Photochemistry and Photobiology* 42: 759–763.

## Supporting Information

Additional Supporting Information may be found online in the Supporting Information section at the end of the article.

**Fig. S1** Correlations between the baseline spectral ratios before a windfleck and the percent change in the spectral ratio between the peak and the baseline of a windfleck.

**Fig. S2** Tree-specific correlations between architectural traits and windfleck properties.

**Fig. S3** Distribution of sunfleck durations per species.

**Table S1** Dataset used for statistical analysis.

Please note: Wiley is not responsible for the content or functionality of any Supporting Information supplied by the authors. Any queries (other than missing material) should be directed to the *New Phytologist* Central Office.