



<https://helda.helsinki.fi>

Helda

The developing wing crossvein of *Drosophila melanogaster* : a fascinating model for signaling and morphogenesis

Antson, Hanna

Landes Bioscience

2022-12-31

Antson, H, Tonisoo, T & Shimmi, O 2022, 'The developing wing crossvein of *Drosophila melanogaster* : a fascinating model for signaling and morphogenesis', *Fly*, vol. 16, no. 1, pp. 118-127. <https://doi.org/10.1080/19336934.2022.2040316>

<http://hdl.handle.net/10138/342443>

10.1080/19336934.2022.2040316

cc_by

publishedVersion

Downloaded from Helda, University of Helsinki institutional repository.

This is an electronic reprint of the original article.

This reprint may differ from the original in pagination and typographic detail.

Please cite the original version.



Fly

ISSN: (Print) (Online) Journal homepage: <https://www.tandfonline.com/loi/kfly20>

The developing wing crossvein of *Drosophila melanogaster*: a fascinating model for signaling and morphogenesis

Hanna Antson, Tambet Tõnissoo & Osamu Shimmi

To cite this article: Hanna Antson, Tambet Tõnissoo & Osamu Shimmi (2022) The developing wing crossvein of *Drosophila melanogaster*: a fascinating model for signaling and morphogenesis, *Fly*, 16:1, 118-127, DOI: [10.1080/19336934.2022.2040316](https://doi.org/10.1080/19336934.2022.2040316)

To link to this article: <https://doi.org/10.1080/19336934.2022.2040316>



© 2022 The Author(s). Published by Informa UK Limited, trading as Taylor & Francis Group.



Published online: 18 Mar 2022.



Submit your article to this journal [↗](#)



Article views: 237



View related articles [↗](#)



View Crossmark data [↗](#)

The developing wing crossvein of *Drosophila melanogaster*: a fascinating model for signaling and morphogenesis

Hanna Antson^a, Tambet Tõnissoo^a, and Osamu Shimmi ^{a,b}

^aInstitute of Molecular and Cell Biology, University of Tartu, Tartu, Estonia; ^bInstitute of Biotechnology, University of Helsinki, Helsinki, Finland

ABSTRACT

The *Drosophila* wing has been used as a model for studying tissue growth, morphogenesis and pattern formation. The wing veins of *Drosophila* are composed of two distinct structures, longitudinal veins and crossveins. Although positional information of longitudinal veins is largely defined in the wing imaginal disc during the larval stage, crossvein primordial cells appear to be naive until the early pupal stage. Here, we first review how wing crossveins have been investigated in the past. Then, the developmental mechanisms underlying crossvein formation are summarized. This review focuses on how a conserved trafficking mechanism of BMP ligands is utilized for crossvein formation, and how various co-factors play roles in sustaining BMP signalling. Recent findings further reveal that crossvein development serves as an excellent model to address how BMP signal and dynamic cellular processes are coupled. This comprehensive review illustrates the uniqueness, scientific value and future perspectives of wing crossvein development as a model.

ARTICLE HISTORY

Received 1 November 2021
Revised 2 February 2022
Accepted 3 February 2022
Published online

KEYWORDS

BMP; pattern formation; BMP binding protein; short gastrulation; crossveinless; epithelial cells; posterior crossvein

Introduction

Wing vein patterning and morphogenesis of *Drosophila* serve as an excellent model to investigate the interactions between signalling pathways during development [1,2]. In addition, due to its visibility and non-requirement for viability, the *Drosophila* wing has served as an exceptional model for phenotypic analysis [3]. In the context of wing crossvein development, Calvin Bridges reported that the *crossveinless* (*cv*) mutant is an X-linked (sex-linked) recessive allele [4]. Since then, the *cv* mutant has been used as a convenient recessive marker.

The process of crossvein development was elucidated by Conrad Waddington in 1940 [5]. Detailed observations of wing vein development indicate that the position of the posterior crossvein (PCV) is determined during the pre-pupal stage and affected by the formation of longitudinal veins (LVs). Furthermore, Waddington utilized crossveinless phenotypes to elucidate the effects of environmental perturbations [6]. Due to its convenient phenotypic analysis, crossveinless phenotypes were actively used for natural variation and

the effects of environmental perturbations during the 1960s [7–14]. However, the gene responsible for crossveinless alleles remained to be elucidated until 2000.

According to ‘*The Genome of Drosophila melanogaster*’, eight crossveinless alleles have been described, including *crossveinless* (*cv*), *crossveinless-2* (*cv-2*), *crossveinless-b* (*cv-b*), *crossveinless-c* (*cv-c*), *crossveinless-d* (*cv-d*), *crossveinless effect* (*cve*), *crossveinless like 5* (*cvl-5*), and *crossveinless like 6* (*cvl-6*) [15]. Among these, the molecular mechanisms of *cv*, *cv-2*, *cv-c*, and *cv-d* have been characterized to date, and have contributed to enhance our knowledge of how crossvein development is regulated. In the following, we review molecular mechanisms behind crossvein development.

1. The development of wing longitudinal veins

The *Drosophila* wing is composed of two different types of veins, the LVs (LV1-5) and the crossveins (anterior crossvein (ACV) and PCV) [1,5]. During

the early stage of wing development, the pattern of LVs emerges during the mid- to late third instar larval stage [1,5]. At the beginning of metamorphosis, the wing imaginal disc, a single-layered epithelial sheet, undergoes disc eversion to become a pupal wing composed of two epithelial cell layers [16,17]. During the first day of pupal development, wing formation can be divided into three distinct stages. They include the first apposition, the inflation, and the second apposition stages [4]. During the first apposition, from the start of pupariation until 10 h after pupariation (AP), proveins of LVs are formed as broad gaps between dorsal and ventral epithelia [1,5]. The provein gaps are lost during the following inflation stage between 10 h and 20 h AP, during which separation of the two wing epithelia occurs. In the course of the second apposition, starting around 20 h AP, dorsal and ventral epithelia re-appose and definitive veins become evident (Figure 1) [1,5].

In the course of wing vein formation, LVs are dependent on various highly conserved signalling pathways. They include the Notch-Delta, the Epidermal growth factor receptor (Egfr), the Bone Morphogenetic Protein (BMP), and the Rho GTPase signalling pathways [1,2,18]. They interact with and feed back into each other to

initially define vein and intervein regions in the larval wing imaginal disc and refine vein patterning during pupal stages [1,19,20].

Egfr signalling is crucial for the initial specification of the LV proveins [21,22]. The pathway is vital for stimulating vein formation and impacts Notch signalling by activating the expression of *Delta* and by repressing the expression of *Notch* [23], which specifies the vein and intervein regions. The latter in turn represses the activity of Egfr signalling. Continued Egfr signalling within LVs is required to maintain vein cell fate, and later on to activate BMP signalling within the LVs by inducing the expression of the BMP-type ligand *decapentaplegic* (*dpp*) [21,24,25]. *Dpp* is secreted either as a homodimer (Dpp:Dpp) or as a heterodimer with another BMP-type ligand, Glass bottom boat (Gbb) (Dpp:Gbb) [26–28]. The ligands bind to BMP type I receptor Thickveins (Tkv) and type II receptor Punt, leading to phosphorylation of the transcription factor Mothers against *dpp* (Mad) [17,27,29]. Phosphorylated Mad (pMad) is then able to bind to Medea, a co-Smad, and translocates into the nucleus to regulate the transcription of various targetgenes (Table 1) [30]. BMP signalling

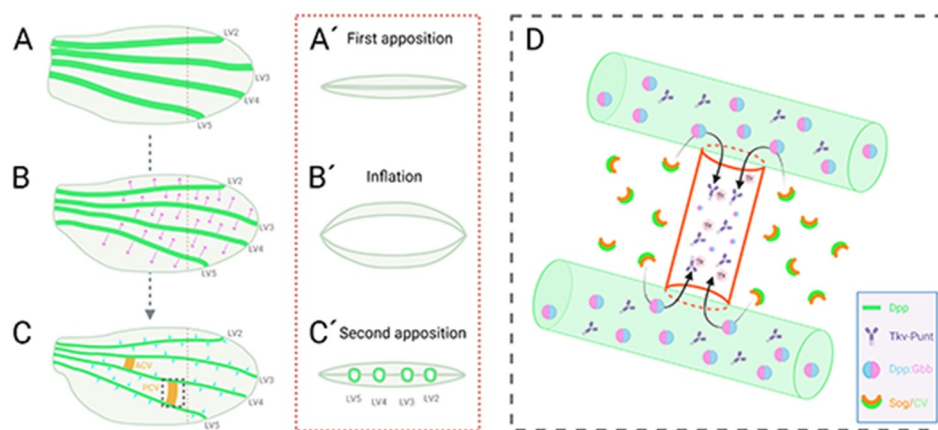


Figure 1. Posterior crossvein development of the *Drosophila* pupal wing. (A, A') During the first apposition of the wing epithelia, around 8 h after pupariation (AP), *dpp* (green) is expressed in the longitudinal veins 2–5 (LV2–5). (B, B') In the course of the inflation stage (10 h – 20 h AP), *Dpp* diffuses laterally to maintain a long-range BMP signal (magenta arrows). (C, C') During the second apposition stage (20 h AP or later), posterior crossvein (PCV) progenitor cells are first detectable. At this stage, *Dpp* maintains a short-range BMP signal in the LVs (blue arrows). A long-range BMP signal is needed for PCV formation. (D) A schematic of long-range BMP signal into PCV. *Sog/Cv* complex facilitates *Dpp:Gbb* heterodimer trafficking from LVs into the PCV region. *Sog* is then cleaved by protease *Tlr* enabling the release of *Dpp:Gbb* heterodimers, which subsequently activates the *Tkv-Punt* receptor in the PCV region. Dorsal view of the pupal wing (A, B, C). Cross-section of the area shown in A, B, C with red dashed line (dorsal at the top and ventral at the bottom) (A', B', C'). Zoomed view of the PCV region shown in C with black dashed box (D). Created with BioRender.com.

Table 1. Molecular factors involved in the PCV development of the *Drosophila* pupal wing and their human orthologs.

	<i>Drosophila</i>	Human	Similarity
BMP-type ligand	<i>decapentaplegic (dpp)</i>	<i>BMP2/4</i>	54% (<i>BMP2</i>) 57% (<i>BMP4</i>)
BMP-type ligand	<i>glass bottom boast (gbb)</i>	<i>BMP5/6/7/8a/8b</i>	52% (<i>BMP7</i>)
BMP-type I receptor	<i>thick veins (tkv)</i>	<i>BMPR1</i>	63% (<i>BMPR1</i>)
BMP-type II receptor	<i>punt (punt)</i>	<i>BMPR2</i>	54% (<i>BMPR2</i>)
BMP receptor regulated protein (R-Smad)	<i>Mothers against dpp (Mad)</i>	<i>SMAD1, 5, 8</i>	82% (<i>SMAD1</i>)
Common mediator Smad (Co-Smad)	<i>Medea (Med)</i>	<i>SMAD4</i>	55% (<i>SMAD4</i>)
BMP binding protein	<i>short gastrulation (sog)</i>	<i>CHRD</i>	40% (<i>CHRD</i>)
BMP binding protein	<i>crossveinless (cv)</i>	<i>TWSG1</i>	54% (<i>TWSG1</i>)
Protease	<i>tolloid-related (tlr)</i>	<i>BMP1</i>	66% (<i>BMP1</i>)
BMP binding protein	<i>crossveinless-2 (cv-2)</i>	<i>BMPER</i>	47% (<i>BMPER</i>)
BMP binding protein	<i>crossveinless (cv-d)</i>	ND	–
Rho GTPase-activating protein (RhoGAP)	<i>crossveinless-c (cv-c)</i>	<i>DLC1</i>	46% (<i>DLC1</i>)
Component of DAPC	<i>Dystrophin (Dys)</i>	<i>DMD</i>	47% (<i>DMD</i>)
Apicobasal polarity determinant	<i>scribbled (scrib)</i>	<i>SCRIB</i>	45% (<i>SCRIB</i>)
Rho family GTPase	<i>Cdc42</i>	<i>CDC42</i>	95% (<i>CDC42</i>)

The degree of similarity is based on protein alignment between two genes (DRSC integrative ortholog prediction tool (DIOPT) by Harvard Medical School). ND: not determined.

pathway is required to maintain Egfr signalling for the continuous development of the LVs, and plays a critical role in vein specification during wing development [19,20].

2. The development of wing crossveins

Definitive crossveins are formed after the initial specification of LVs, during the second apposition [5]. Here, we focus on mechanisms underlying PCV development, as previous studies mainly used PCV as a model. Immediately prior to the second apposition stage, PCV between L4 and L5 first becomes detectable around 18 h AP as a broad zone of crossvein progenitor cells [5,21,25]. As PCV development progresses between 20 h and 28 h AP, the broad zone of the PCV field starts to constrict, leading to the formation of a narrow, refined and well-defined PCV [21,31,32].

The specification of the PCV has been shown to be regulated by induction of BMP signalling [21,25,33]. During the pupal stage, *dpp* is expressed in the LVs but not PCV prior to 28 h AP. However, BMP signal is detectable in all wing progenitor cells, including crossveins, at 18 h AP or later, indicating that long-range BMP signalling is required for PCV formation until *dpp* itself is expressed in the PCV (Figure 1C) [21,26]. Visualizing functional GFP-tagged Dpp in the pupal wing reveals that Dpp-GFP moves from

the LVs into the PCV field [26]. In contrast, most Dpp-GFP is immobilized near the LVs to maintain a short-range signalling (Figure 1C, D) [26]. These data indicate that both short-range BMP signalling in LVs and long-range BMP signalling towards the PCV are required for wing vein patterning.

One group of *dpp* mutant alleles called *shortvein (shv)* contains mutations in the enhancer region responsible for *dpp* transcription during the pupal stage [34,35]. Since *dpp^{shv}* mutant flies display a loss of wing veins distally, Dpp has been considered to serve as a wing vein determinant during the pupal stage. Recent studies, however, reveal that BMP signalling coordinates both tissue growth and vein patterning during pupal wing development [16]. This is evidenced by the fact that a conditional knockout of *dpp* in the pupal wing leads to smaller wing size and loss of vein formation. Dpp forms a long-range BMP signal by maintaining lateral trafficking of ligands during the inflation stage at the time when active proliferation occurs (Figure 1B, B') [16]. Then BMP signal switches over to short-range signalling around the period of the second apposition (~18 h AP) to function as a wing vein determinant (Figure 1C, C'). The change in BMP signalling range coincides with changes in the three-dimensional wing structure [16]. Interestingly, when the dorsal and ventral wing epithelia re-appose, BMP laterally signals over a short range, but also maintains active vertical communication

between the two epithelial layers. This may help the final refinement of wing vein patterning. Thus, the long-range BMP signal in the PCV region starts taking place when the wing structure changes from inflation to the second apposition stages.

3. Long-range BMP signalling during PCV development

How is a long-range BMP signal generated in the PCV field, even though the BMP signal changes to short-range in the LVs? The existence of a class of genes needed for crossvein formation in *the Drosophila* wing provides clues to understand the mechanisms. Genetic analysis has revealed that several components are required for BMP signalling in the PCV region. These include two BMP-type ligands, Dpp and Gbb, and two BMP binding proteins, short gastrulation (Sog) and crossveinless (Cv) (Table 1).

In addition to Dpp, Gbb is required for PCV formation [25,27,28,36]. Both Dpp and Gbb ligands move from LVs into the PCV region from 18 h to 28 h AP [21,26,27]. The spatial distribution of BMP ligands is tightly regulated at the extracellular level. Since a short-range BMP signal is observed in LVs during this period, mechanisms that move ligands into PCV are needed.

Two BMP binding proteins, Sog and Cv, play such a role by forming a complex with and facilitating the long-range directional transport of Dpp and Gbb from the LVs towards the PCV field (Figure 1D) [26,27]. Sog, an ortholog of Chordin in vertebrates, was originally identified as a secreted BMP binding protein needed for dorsoventral axis formation in the early embryo [37,38]. Later, Sog was also found to be needed for BMP signalling in the PCV field of the pupal wing [21,39]. Sog inhibits BMP signalling by binding to and sequestering BMP ligands, preventing the activation of receptors (Figure 2) [39,40]. Interestingly, the absence of *sog* transcription appears to prepattern the PCV position [21,26]. During 18 h to 20 h AP, *sog* expression is repressed in the PCV field in a BMP signal-independent manner to provide the positional information of the BMP signal. At later stages of

PCV development, continuous BMP signal is needed for maintaining the repression of *sog* transcription by forming a feedback loop (Figure 2) [26]. It remains to be addressed how BMP signal-independent *sog* expression is regulated during PCV development.

Secreted protein Crossveinless (Cv) is functionally equivalent to Twisted gastrulation (Tsg), another dorsoventral determinant in the embryo [27,41,42]. Cv was originally named Tsg2 but later identified to encode the gene product of the *cv* allele. A Sog-Tsg complex leads to facilitated transport of a BMP heterodimer comprising Dpp and Screw, another BMP type ligand, for BMP morphogen gradient formation in the embryo [43,44]. Tolloid (Tld) protease is then needed for BMP ligand binding to the receptors through releasing ligands from the Sog-Tsg complex after cleavage of Sog [45]. During pupal wing development, Tolloid related (Tlr), a paralog to Tld, plays such a role [46]. Similar to Sog, Tlr is expressed in the intervein regions of developing wings, indicating its role in the arrangement and refinement of vein formation. As *tlr* mutants exhibit a PCV-less adult wing phenotype, the protease is shown to play a role in the specification of the PCV. Moreover, Tlr is needed to ensure localized and high levels of BMP signalling during PCV specification by cleaving and inactivating the BMP binding protein Sog [46]. This leads to the release of ligands to activate the receptors in the PCV to accomplish restricted patterns of signalling in the pupal wing [33,46]. Thus, PCV formation needs a facilitated transport mechanism of BMP ligands, in which Dpp:Gbb heterodimer produced in the LVs is moved into the PCV field by a Sog-Cv complex, and then Dpp:Gbb ligands are released from the Sog-Cv complex via the activity of Tlr to bind to the BMP-type receptors Tkv and Punt for signalling (Figure 1D).

The expression of BMP type I receptor Tkv in the LVs is crucial for maintaining vein width by regulating the BMP signalling range in the LVs [21,24]. Dpp ligands are actively retained in the LVs by Tkv-ligand interactions and a feedback mechanism [26,47]. Since ectopic expression of a constitutive active form of Tkv (Tkv^{QD}) in the LVs leads to loss of BMP signal in the PCV field, a feedback mechanism appears to be crucial for

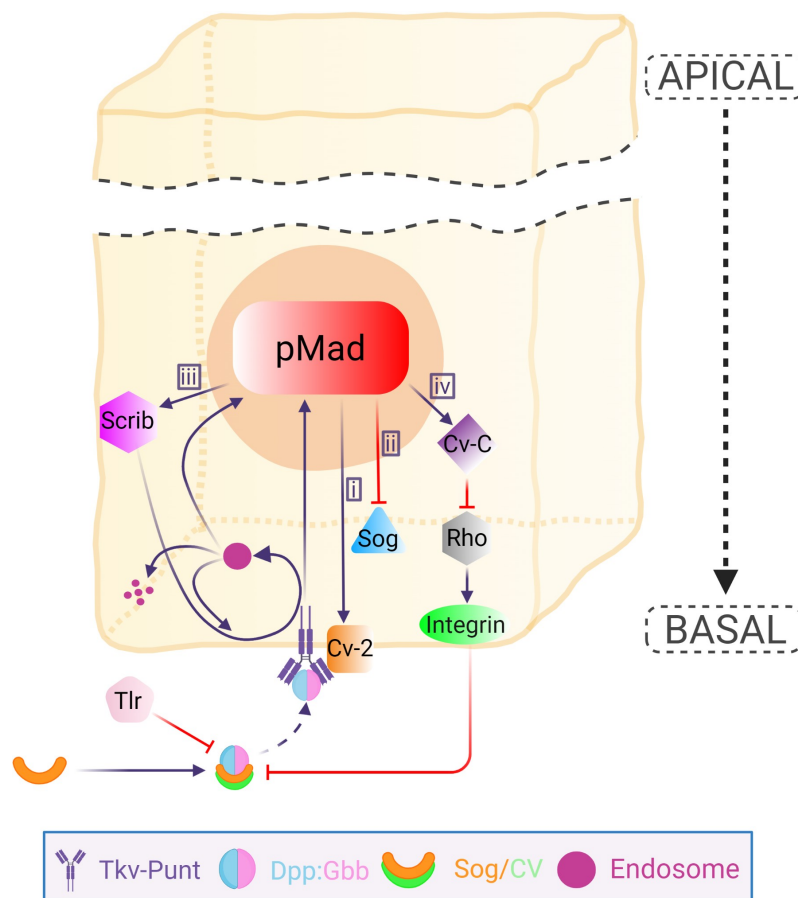


Figure 2. Schematic overview of BMP signalling regulatory system in the PCV cell. The Dpp:Gbb heterodimer is trafficked basally with BMP binding proteins Sog/Cv to bind Tkv-Punt receptor. The release of the ligands requires protease Tlr that is responsible for the cleavage of Sog. The release of the heterodimers leads to the activation of the receptor prompting BMP signalling highlighted by pMad expression. BMP signal regulates various co-factors that form a feedback or feedforward mechanism to further sustain BMP signal in the PCV field. i) Cv-2 is upregulated by BMP signal. Cv-2 is a secreted BMP-binding protein that promotes BMP signalling by facilitating receptor-ligand binding. ii) BMP signal represses *sog* expression which is needed for continuous PCV formation. iii) BMP signal is needed for up-regulating Scrib expression, which in turn optimizes the BMP signalling by regulating the localization of Tkv and by facilitating Tkv internalization to Rab5 endosomes enabling the receptor signalling. The endosomes can either enter into the receptor recycling or go to degradation. iv) BMP signal induces *cv-c* expression, which is responsible for inactivating Rho-type small GTPases, leading to the downregulation of β -integrins. Low levels of β -integrins provide optimal extracellular environment to maintain ligand trafficking into the PCV region. Apical portion of the epithelial cell is abbreviated. Created with BioRender.com.

PCV development as well [26]. As Dpp:Gbb heterodimers are intrinsically retained in the LVs by Tkv, the Sog-Cv-mediated transport is thought to liberate Dpp:Gbb heterodimers from the positive feedback mediated retention in the LVs, thus enabling PCV formation (Figure 1D) [26,27,33]. Precise molecular mechanisms of the feedback loop remain to be identified.

4. Co-factors involved in PCV development

During early PCV development, Dpp ligand observed in the PCV field is limited, even though

pMad signal, a readout of the BMP signal, is robust [16,26] (Vi Tran et al., unpublished data). Therefore, co-factors may play a crucial role in sustaining BMP signalling in the PCV field. Next, we review co-factors responsible for regulating BMP signalling in the PCV field (Table 1).

Crossveinless-2

Crossveinless-2 (Cv-2) is required for boosting BMP signal in the PCV region [48]. Cv-2 is composed of two domains: an N-terminal cysteine-rich

domain and a C-terminal von Willebrand Factor domain [25]. Cv-2 is a secreted BMP-binding protein that enhances or inhibits BMP signalling in a context-dependent manner and loss of Cv-2 function leads to a PCV-less phenotype [25,48]. *cv-2* expression in the PCV region is regulated by BMP signalling, and thus Cv-2 is a part of a positive feedback loop (Figure 2). It is highly expressed in the PCV and serves to promote high levels of BMP signalling in the area through facilitating receptor-ligand binding [25,48].

Crossveinless-d

One of the co-factors needed for proper BMP signalling during PCV morphogenesis is Crossveinless-d (Cv-d) [49]. It is a vitellogenin-like lipoprotein produced in fat bodies and other tissues and is able to diffuse into the pupal wing via the hemolymph [47]. Cv-d binds BMP ligands Dpp and Gbb through its Vg domain. As BMP binding to Vg domain is necessary but not sufficient for Cv-d activity, lipid binding is also proposed to be necessary for Cv-d function. Cv-d accumulation and PCV development require Heparan Sulphate Proteoglycans (HSPGs) [49]. As Cv-d acts over a long range, it has been suggested that Cv-d affects the range of BMP movement in the pupal wing, probably as part of a lipid-BMP-lipoprotein complex. As more severe PCV defects can be observed at later pupal stages, Cv-d is also important for maintaining BMP signalling in addition to its extracellular role in regulating BMP signalling in the PCV during initial stages of PCV development [49].

Dystrophin

Dystrophin and Dystroglycan are two central components of the Dystrophin Associated Protein Complex (DAPC) [50]. In *Drosophila*, *Dystrophin* (*Dys*) encodes the ortholog of human Dystrophin, and the mutations of *Dys*^{det} lead to variable defects in the formation of PCV, ranging from mild to severe [15,31]. As null mutations in Dystroglycan (*Dg*) produce a phenotype similar to that of *Dys*^{det}, a link between the molecular function of the DAPC and its involvement in the PCV specification has been suggested [31]. A model has been

proposed by which during the early stage of PCV development, BMP signal activates the DAPC in the PCV region. DAPC then downregulates Notch signalling to antagonize BMP signalling, where the diffusion of Dpp:Gbb heterodimers is disrupted into the presumptive PCV region from LV4 and LV5 [31].

5. Co-factors coupling BMP signal and wing morphogenesis in the PCV region

When BMP signal instructs vein fate in the PCV field, wing vein morphogenesis represented by apical constriction and lumen formation takes place [32,33]. Due to its relatively simple structure and well-defined molecular mechanisms, PCV development serves as an excellent model to address how extrinsic cues and tissue morphogenesis are coordinated during dynamic tissue development [51]. In the following section, we review in greater detail how cellular signal is required for PCV development and how BMP signal and wing morphogenesis are coupled.

Crossveinless-C

Crossveinless-C (Cv-C), originally found in 1934 [15], was shown to encode the Rho GTPase-activating protein RhoGAP88C [52]. Cv-C is the key molecule coordinating BMP ligand trafficking and PCV morphogenesis. Cv-C is induced at PCV primordial cells by BMP signalling, where it cell-autonomously inactivates signalling from several Rho-type small GTPases, including Cdc42, Rac1, Rac2 and Rho1. This leads to cell-autonomous downregulation of Rho GTPase targets, such as integrins [33]. Cv-C is also required for BMP ligand trafficking into the PCV region in a non-autonomous manner. The downregulation of integrins in the basal compartment of the PCV field provides an optimal extracellular environment for BMP ligand trafficking. The cellular distribution of integrins is a key regulator for extracellular BMP ligand movement [53]. BMP ligands then preferentially accumulate on the basal side of the PCV region [26]. Therefore, these cellular mechanisms mediate a feed-forward loop that coordinates BMP ligand trafficking and PCV morphogenesis (Figure 2) [33]. These

mechanisms not only play a role in achieving precise tissue morphogenesis but also may be used for producing variations of crossveins. Ectopic crossvein formations are often observed in mutant alleles of *Cdc42* [54]. Loss of *Cdc42* causes ectopic BMP signal in the intervein regions during the early pupal stages, resulting in ectopic crossvein formation [33]. Thus, loss of Rho-type GTPase signal has an instructive role in generating crossveins.

Scribble

The Scribble complex is one of the key molecules responsible for establishing apicobasal polarity in epithelial cells and plays a crucial role in tissue homeostasis [55–57]. The complex is composed of Scribble (Scrib), Discs large 1 (DLG1), and Lethal giant larvae (LGL) proteins [56]. The complex has been identified to be required for PCV development as well since knockdown of *scrib*, *dlg1*, or *lgl* leads to defects in PCV formation [32]. Scrib is needed for optimizing BMP signal in the PCV region in a cell-autonomous manner. Scrib and BMP signal form a positive feedback loop to maintain BMP signals during the PCV morphogenesis in the pupal wing (Figure 2) [32]. BMP signal increases the Scrib levels for further polarization, which then facilitates basal accumulation of the BMP type I receptor Tkv where BMP ligand trafficking takes place (Figure 2) [33]. Scrib also facilitates Tkv internalization to the Rab5 endosomes that plays an important role in BMP signal transduction. Thereby, Scrib is needed not only for sustaining epithelial polarity but also for maintaining BMP signalling during PCV morphogenesis. These findings illustrate how BMP signal and cellular mechanisms are coordinated in PCV development.

6. Perspectives

Here, we summarized current knowledge about how wing crossveins have been studied in the past, and how the analysis of classical mutant alleles led to the unveiling of molecular mechanisms of PCV development. One of the classical alleles *cv* has been used as a recessive marker [4], however it remained unknown what molecular

mechanisms are required for crossvein formation. Interestingly, after finding one of the dorsal patterning genes *tsg* [58], a Tsg paralog was identified and named Tsg2 [41]. Since *tsg2* proved to be allelic to the *cv* allele and Tsg2 can rescue *cv* mutants, *cv* encodes this Tsg-like protein [27,42]. Due to the similarity of components needed for dorsal patterning in the embryo and PCV formation in the pupal wing, a trafficking mechanism of BMP ligands has been proposed for PCV formation [27,42]. Since the deep homology of conserved Chordin/Sog-mediated BMP trafficking has been hypothesized [59], the system that mobilizes BMP ligands by Sog complex appears to be co-opted for PCV development. A trafficking mechanism is not only used for PCV formation of the *Drosophila* wing but also in wing vein development in other insect species as well [60–62].

Studies of PCV development highlight the roles of unique co-factors required for BMP signalling in the PCV development (Table 1). Although the molecular mechanisms behind PCV formation have been thoroughly investigated, questions remain that need to be addressed in the future.

First, understanding the pre-pattern information of crossveins is important. Previous studies revealed that loss of *sog* transcription in the PCV field instructs where BMP signal is induced [26]. However, how *sog* transcription is regulated prior to BMP signal induction is unknown. One intriguing observation relevant to this question is that weak alleles of *cdc42* often lead to ectopic crossveins by inducing Sog-mediated BMP signal [26]. Transcriptional control of RhoGTPase regulators, e.g. Rho guanine nucleotide exchange factors (RhoGEFs), may be involved in pre-pattern information. Ectopic crossvein phenotypes are also observed in other contexts, e.g. ectopic expression of transglutaminases [63,64].

Second, further elucidation of the feedback mechanism found in the LVs is crucial. The ectopic expression of constitutively active Tkv in the LVs disrupts BMP signal in the PCV field [26]. This may suggest that BMP ligands become immobilized and are unable to move into the PCV field. Contrary to this, ligands in the LVs acquire the mobility to generate a wider range of signal when the feedback mechanism is disrupted, leading to

failure of proper wing vein patterning [26]. As the molecular components involved in the feedback mechanism are largely uncharacterized, future studies will be needed to understand how short- and long-range signals are regulated for wing vein patterning.

Finally, previous studies revealed that the PCV serves as an excellent model to address how BMP signal and tissue morphogenesis are coupled [32,33]. To further understand how BMP signal and dynamic cellular changes are coordinated, employing *in vivo* live imaging may play a key role. Recent studies reported a live imaging protocol to observe PCV morphogenesis *in vivo* [65]. Extension of this line of research will be important in the future.

Acknowledgments

We are grateful to Martti Montanari for thoughtful comments on the manuscript. We thank N. Vi Tran for sharing unpublished results. O.S. was supported by Grant from the Sigrid Juselius Foundation and Grant MOBERC33 from the Estonian Research Council.

Disclosure statement

No potential conflict of interest was reported by the author(s).

Funding

This work was supported by the Sigrid Juséliuksen Säätiö [SJVT]; Eesti Teadusagentuur [Eesti Teadusagentuur MOBERC33].

Author contributions

Hanna Antson: Writing - draft; visualization. Tambet Tõnissoo: writing - draft. Osamu Shimmi: Writing - draft.

ORCID

Osamu Shimmi  <http://orcid.org/0000-0001-6341-9130>

References

- [1] Blair SS. Wing vein patterning in *Drosophila* and the analysis of intercellular signaling. *Annu Rev Cell Dev Biol.* 2007;23(293–319):293–319.
- [2] De Celis JF. Pattern formation in the *Drosophila* wing: the development of the veins. *Bioessays.* 2003;25(443–451):443–451.
- [3] Matamoro-Vidal A, Salazar-Ciudad I, Houle D. Making quantitative morphological variation from basic developmental processes: where are we? the case of the *Drosophila* wing. *Dev Dyn.* 2015;244(1058–1073):1058–1073.
- [4] Bridges CB. The mutant *crossveinless* in *Drosophila melanogaster*. *Proc Natl Acad Sci U S A.* 1920;6(660–663):660–663.
- [5] Waddington CH. The genetic control of wing development in *Drosophila*. *J. Genet.* 1940;41(75–139):75–113.
- [6] Waddington CH. Genetic assimilation of an acquired character. *Evolution.* 1953;7(118–126):118–126.
- [7] Thompson SR. The effect of temperature on *crossveinless* formation in *crossveinless*-like strains of *drosophila melanogaster*. *Genetics.* 1967;56(13–22):13–22.
- [8] Mohler JD. Preliminary genetic analysis of *crossveinless*-like strains of *drosophila melanogaster*. *Genetics.* 1965;51(641–651):641–651.
- [9] Mohler JD. The influence of some *crossveinless*-like genes on the *crossveinless* phenocopy sensitivity in *drosophila melanogaster*. *Genetics.* 1965;51(329–340):329–340.
- [10] Milkman RD. The genetic basis of natural variation. VI. selection of a *crossveinless* strain of *Drosophila* by phenocopying at high temperature. *Genetics.* 1965;51:87–96.
- [11] Mohler JD, Swedberg GS. Wing vein development in *crossveinless*-like strains of *drosophila melanogaster*. *Genetics.* 1964;50(1403–1419):1403–1419.
- [12] Milkman RD. The genetic basis of natural variation. V. selection for *crossveinless* polygenes in new wild strains of *Drosophila melanogaster*. *Genetics.* 1964;50:625–632.
- [13] Mohler JD. Some interactions of *crossveinless*-like genes in *drosophila melanogaster*. *Genetics.* 1967;57(65–77):65–77.
- [14] Marcus JM. The development and evolution of *crossveins* in insect wings. *J Anat.* 2001;199(211–216):211–216.
- [15] Lindsley DL, Zimm GG. The genome of *Drosophila melanogaster*. Academic Press; 1992.
- [16] Gui J, Huang Y, Montanari M, *et al.* Coupling between dynamic 3D tissue architecture and BMP morphogen signaling during *Drosophila* wing morphogenesis. *Proc Natl Acad Sci U S A.* 2019;116(4352–4361). DOI:10.1073/pnas.1815427116.
- [17] Montanari MP, Tran NV, Shimmi O. Regulation of spatial distribution of BMP ligands for pattern formation. *Dev Dyn.* 2022;251(198–212):178–192.
- [18] Shimmi O, Newfeld SJ. New insights into extracellular and post-translational regulation of TGF-beta family signalling pathways. *J Biochem.* 2013;154(11–19):11–19.
- [19] Yan SJ, Zartman JJ, Zhang M, *et al.* Bistability coordinates activation of the EGFR and DPP pathways in

- Drosophila* vein differentiation. *Mol Syst Biol.* 2009;5 (278). DOI:10.1038/msb.2009.35.
- [20] Martín-Blanco E, Roch F, Noll E, *et al.* A temporal switch in DER signaling controls the specification and differentiation of veins and interveins in the *Drosophila* wing. *Development.* 1999;126(5739–5747). DOI:10.1242/dev.126.24.5739.
- [21] Ralston A, Blair SS. Long-range Dpp signaling is regulated to restrict BMP signaling to a crossvein competent zone. *Dev Biol.* 2005;280(187–200):187–200.
- [22] Diaz-Benjumea FJ, Garcia-Bellido A. Behaviour of cells mutant for an EGF receptor homologue of *Drosophila* in genetic mosaics. *Proc Biol Sci.* 1990;242:36–44.
- [23] de Celis JF, Bray S, Garcia-Bellido A. Notch signalling regulates veinlet expression and establishes boundaries between veins and interveins in the *Drosophila* wing. *Development.* 1997;124(1919–1928):1919–1928.
- [24] de Celis JF. Expression and function of decapentaplegic and thick veins during the differentiation of the veins in the *Drosophila* wing. *Development.* 1997;124(1007–1018):1007–1018.
- [25] Conley CA, Silburn R, Singer MA, *et al.* Crossveinless 2 contains cysteine-rich domains and is required for high levels of BMP-like activity during the formation of the cross veins in *Drosophila*. *Development.* 2000;127(3947–3959). DOI:10.1242/dev.127.18.3947.
- [26] Matsuda S, Shimmi O. Directional transport and active retention of Dpp/BMP create wing vein patterns in *Drosophila*. *Dev Biol.* 2012;366:153–162.
- [27] Shimmi O, Ralston A, Blair SS, *et al.* The crossveinless gene encodes a new member of the Twisted gastrulation family of BMP-binding proteins which, with short gastrulation, promotes BMP signaling in the crossveins of the *Drosophila* wing. *Dev Biol.* 2005;282:70–83.
- [28] Ray RP, Wharton KA. Context-dependent relationships between the BMPs *gbb* and *dpp* during development of the *Drosophila* wing imaginal disk. *Development.* 2001;128(3913–3925):3913–3925.
- [29] Padgett RW, Wozney JM, Gelbart WM. Human BMP sequences can confer normal dorsal-ventral patterning in the *Drosophila* embryo. *Proc Natl Acad Sci U S A.* 1993;90(2905–2909):2905–2909.
- [30] Shimmi O, Newfeld SJ. New insights into extracellular and post-translational regulation of TGF- β family signalling pathways. *J Biochem.* 2013;154(11–19):11–19.
- [31] Christoforou CP, Greer CE, Challoner BR, *et al.* The detached locus encodes *Drosophila* dystrophin, which acts with other components of the dystrophin associated protein complex to influence intercellular signalling in developing wing veins. *Dev Biol.* 2008;313:519–532.
- [32] Gui J, Huang Y, Shimmi O. Scribbled optimizes BMP signaling through its receptor internalization to the Rab5 endosome and promote robust epithelial morphogenesis. *PLoS Genet.* 2016;12 (e1006424):1006424.
- [33] Matsuda S, Blanco J, Shimmi O. A feed-forward loop coupling extracellular BMP transport and morphogenesis in *Drosophila* wing. *PLoS Genet.* 2013;9(e1003403):1003403.
- [34] St Johnston RD, Hoffmann FM, Blackman RK, *et al.* Molecular organization of the decapentaplegic gene in *Drosophila melanogaster*. *Genes Dev.* 1990;4(1114–1127):1114–1127.
- [35] Segal D, Gelbart WM. Shortvein, a new component of the decapentaplegic gene complex in *Drosophila melanogaster*. *Genetics.* 1985;109:119–143.
- [36] Khalsa O, Yoon JW, Torres-Schumann S, *et al.* TGF-beta/BMP superfamily members, *Gbb-60A* and *Dpp*, cooperate to provide pattern information and establish cell identity in the *Drosophila* wing. *Development.* 1998;125:2723–2734.
- [37] Francois V, Solloway M, O'Neill JW, *et al.* Dorsal-ventral patterning of the *Drosophila* embryo depends on a putative negative growth factor encoded by the short gastrulation gene. *Genes Dev.* 1994;8(2602–2616):2602–2616.
- [38] Holley SA, Jackson PD, Sasai Y, *et al.* A conserved system for dorsal-ventral patterning in insects and vertebrates involving *sog* and *chordin*. *Nature.* 1995;376(249–253). DOI:10.1038/376249a0.
- [39] Yu K, Sturtevant MA, Biehs B, *et al.* The *Drosophila* decapentaplegic and short gastrulation genes function antagonistically during adult wing vein development. *Development.* 1996;122(4033–4044). DOI:10.1242/dev.122.12.4033.
- [40] Yu K, Srinivasan S, Shimmi O, *et al.* Processing of the *Drosophila* *sog* protein creates a novel BMP inhibitory activity. *Development.* 2000;127(2143–2154). DOI:10.1242/dev.127.10.2143.
- [41] Ross JJ, Shimmi O, Vilmos P, *et al.* Twisted gastrulation is a conserved extracellular BMP antagonist. *Nature.* 2001;410(479–483). DOI:10.1038/35068578.
- [42] Vilmos P, Sousa-Neves R, Lukacsovich T, *et al.* Marsh, crossveinless defines a new family of twisted-gastrulation-like modulators of bone morphogenetic protein signalling. *EMBO Rep.* 2005;6:262–267.
- [43] Shimmi O, Umulis D, Othmer H, *et al.* Facilitated transport of a Dpp/Scw heterodimer by Sog/Tsg leads to robust patterning of the *Drosophila* blastoderm embryo. *Cell.* 2005;120(873–886):873–886.
- [44] Umulis DM, Shimmi O, O'Connor MB, *et al.* Organism-scale modeling of early *Drosophila* patterning via bone morphogenetic proteins. *Dev Cell.* 2010;18(260–274):260–274.
- [45] Shimmi O, O'Connor MB. Physical properties of Tld, Sog, Tsg and Dpp protein interactions are predicted to help create a sharp boundary in Bmp signals during dorsoventral patterning of the *Drosophila* embryo. *Development.* 2003;130:4673–4682.
- [46] Serpe M, Ralston A, Blair SS, *et al.* Matching catalytic activity to developmental function: tolloid-related processes Sog in order to help specify the posterior crossvein in the *Drosophila* wing. *Development.* 2005;132(2645–2656):2645–2656.

- [47] Lecuit T, Cohen SM. Dpp receptor levels contribute to shaping the Dpp morphogen gradient in the *Drosophila* wing imaginal disc. *Development*. [1998](#);125(4901–4907):4901–4907.
- [48] Serpe M, Umulis D, Ralston A, *et al.* The BMP-binding protein *crossveinless 2* is a short-range, concentration-dependent, biphasic modulator of BMP signaling in *Drosophila*. *Dev Cell*. [2008](#);14:940–953.
- [49] Chen J, Honeyager SM, Schleede J, *et al.* *Crossveinless d* is a vitellogenin-like lipoprotein that binds BMPs and HSPGs, and is required for normal BMP signaling in the *Drosophila* wing. *Development*. [2012](#);139:2170–2176.
- [50] Michele DE, Campbell KP. Dystrophin-glycoprotein complex: post-translational processing and dystroglycan function. *J Biol Chem*. [2003](#);278(15457–15460):15457–15460.
- [51] Gilmour D, Rembold M, Leptin M. From morphogen to morphogenesis and back. *Nature*. [2017](#);541(311–320):311–320.
- [52] Denholm B, Brown S, Ray RP, *et al.* *crossveinless-c* is a RhoGAP required for actin reorganisation during morphogenesis. *Development*. [2005](#);132(2389–2400). DOI:[10.1242/dev.01829](#).
- [53] Araujo H, Negreiros E, Bier E. Integrins modulate *sog* activity in the *Drosophila* wing. *Development*. [2003](#);130(3851–3864):3851–3864.
- [54] Genova JL, Jong S, Camp JT, *et al.* Functional analysis of *Cdc42* in actin filament assembly, epithelial morphogenesis, and cell signaling during *Drosophila* development. *Dev Biol*. [2000](#);221:181–194.
- [55] Bilder D, Perrimon N. Localization of apical epithelial determinants by the basolateral PDZ protein *scribble*. *Nature*. [2000](#);403(676–680):676–680.
- [56] Bilder D. Epithelial polarity and proliferation control: links from the *Drosophila* neoplastic tumor suppressors. *Genes Dev*. [2004](#);18(1909–1925):1909–1925.
- [57] Bonello TT, Peifer M. *Scribble*: a master scaffold in polarity, adhesion, synaptogenesis, and proliferation. *J Cell Biol*. [2019](#);218:742–756.
- [58] Mason ED, Konrad KD, Webb CD, *et al.* Dorsal midline fate in *Drosophila* embryos requires twisted gastrulation, a gene encoding a secreted protein related to human connective tissue growth factor. *Genes Dev*. [1994](#);8:1489–1501.
- [59] Bier E, De Robertis EM. EMBRYO DEVELOPMENT. BMP gradients: a paradigm for morphogen-mediated developmental patterning. *Science*. [2015](#);348:5838.
- [60] Matsuda S, Yoshiyama N, Künnapuu-Vulli J, *et al.* Dpp/BMP transport mechanism is required for wing venation in the sawfly *athalia rosae*. *Insect Biochem Mol Biol*. [2013](#);43(466–473):466–473.
- [61] Shimmi O, Matsuda S, Hatakeyama M. Insights into the molecular mechanisms underlying diversified wing venation among insects. *Proc Biol Sci*. [2014](#);281(20140264).
- [62] Huang Y, Hatakeyama M, Shimmi O. Wing vein development in the sawfly *athalia rosae* is regulated by spatial transcription of Dpp/BMP signaling components. *Arthropod Struct Dev*. [2018](#);47(408–415):408–415.
- [63] Ichikawa A, Kotaki M, Sahashi R, *et al.* Targeted overexpression of *drosophila* transglutaminase-b induced characteristic phenotypes in a manner similar to transglutaminase-A. *Biosci Biotechnol Biochem*. [2011](#);75(1402–1404):1402–1404.
- [64] Ichikawa A, Yamada A, Sakamoto H, *et al.* Overexpression of transglutaminase in the *drosophila* wing imaginal disc induced an extra wing crossvein phenotype. *Biosci Biotechnol Biochem*. [2010](#);74(2494–2496):2494–2496.
- [65] Toddie-Moore DJ, Montanari MP, Tran NV, *et al.* Mechano-chemical feedback mediated competition for BMP signalling leads to pattern formation. *Dev Biol*. [2022](#);481(43–51). DOI:[10.1016/j.ydbio.2021.09.006](#).