



UNIVERSITY OF HELSINKI

<https://helda.helsinki.fi>

Maturation in Atlantic salmon (*Salmo salar*, Salmonidae) : a synthesis of ecological, genetic, and molecular processes

Mobley, Kenyon B.; Aykanat, Tutku; Czorlich, Yann; House, Andrew; Kurko, Johanna ...

2021-09

Springer Science and Business Media Deutschland GmbH

<http://hdl.handle.net/10138/333165>

Mobley, K B, Aykanat, T, Czorlich, Y, House, A, Kurko, J, Miettinen, A, Moustakas-Verho, J, Salgado, A, Sinclair-Waters, M, Verta, J-P & Primmer, C R 2021, 'Maturation in Atlantic salmon (*Salmo salar*, Salmonidae) : a synthesis of ecological, genetic, and molecular processes', *Reviews in Fish Biology and Fisheries*, vol. 31, no. 3, pp. 523-571. <https://doi.org/10.1007/s11160-021-09656-w>

Downloaded from Helda, University of Helsinki institutional repository. <https://helda.helsinki.fi>
This is an electronic reprint of the original article.
This reprint may differ from the original in pagination and typographic detail.
Please cite the original version.



Maturation in Atlantic salmon (*Salmo salar*, Salmonidae): a synthesis of ecological, genetic, and molecular processes

Kenyon B. Mobley · Tutku Aykanat · Yann Czorlich · Andrew House ·
Johanna Kurko · Antti Miettinen · Jacqueline Moustakas-Verho ·
Andrés Salgado · Marion Sinclair-Waters · Jukka-Pekka Verta ·
Craig R. Primmer

Received: 10 November 2020 / Accepted: 19 April 2021 / Published online: 7 June 2021
© The Author(s) 2021

Abstract Over the past decades, Atlantic salmon (*Salmo salar*, Salmonidae) has emerged as a model system for sexual maturation research, owing to the high diversity of life history strategies, knowledge of trait genetic architecture, and their high economic value. The aim of this synthesis is to summarize the current state of knowledge concerning maturation in Atlantic salmon, outline knowledge gaps, and provide a roadmap for future work. We summarize the current state of knowledge: 1) maturation in Atlantic salmon

takes place over the entire life cycle, starting as early as embryo development, 2) variation in the timing of maturation promotes diversity in life history strategies, 3) ecological and genetic factors influence maturation, 4) maturation processes are sex-specific and may have fitness consequences for each sex, 5) genomic studies have identified large-effect loci that influence maturation, 6) the brain-pituitary–gonadal axis regulates molecular and physiological processes of maturation, 7) maturation is a key component of fisheries, aquaculture, conservation, and management, and 8) climate change, fishing pressure, and other anthropogenic stressors likely have major effects on salmon maturation. In the future, maturation research should focus on a broader diversity of life history stages, including early embryonic development, the marine phase and return migration. We recommend studies combining ecological and genetic approaches will help disentangle the relative contributions of effects in different life history stages to maturation. Functional validation of large-effect loci should reveal how these genes influence maturation. Finally, continued research in maturation will improve our predictions concerning how salmon may adapt to fisheries, climate change, and other future challenges.

Tutku Aykanat, Yann Czorlich, Andrew House, Johanna Kurko, Antti Miettinen, Jacqueline Moustakas-Verho, Andrés Salgado, Marion Sinclair-Waters, Jukka-Pekka Verta are listed alphabetically

K. B. Mobley (✉) · T. Aykanat · Y. Czorlich ·
A. House · J. Kurko · A. Miettinen ·
J. Moustakas-Verho · A. Salgado ·
M. Sinclair-Waters · J.-P. Verta · C. R. Primmer
Organismal and Evolutionary Biology Research Program,
Faculty of Biological and Environmental Sciences,
University of Helsinki, PO Box 56, 00014 Helsinki,
Finland
e-mail: kenyon.mobley@helsinki.fi

Y. Czorlich
Norwegian Institute for Nature Research (NINA),
NO-7485 Trondheim, Norway

C. R. Primmer
Institute of Biotechnology, Helsinki Institute of Life
Science (HiLIFE), University of Helsinki, Helsinki,
Finland

Keywords Brain-pituitary–gonadal axis · Genome-wide association mapping · Life history stage · Life history traits · Puberty · Reproduction

Introduction

Sexual maturation (hereto forward maturation) is a key process necessary for reproduction. Maturation encompasses a variety of developmental, physiological, and behavioral processes ultimately leading to reproductive capacity. Maturation processes are energetically costly, and therefore maturation involves trade-offs with other fitness components such as growth and survival (Bernardo 1993; Roff 1993; Stearns 1992). It is well known that various environmental factors can influence maturation and some, such as dietary requirements for normal reproductive development, are ubiquitous. Recent research has revealed how maturation is shaped by the underlying genetic architecture demonstrating that key molecular pathways are shared among a variety of vertebrate species (Barson et al. 2015; Laan et al. 2002; Perry et al. 2014). Currently, maturation research is flourishing and a variety of studies aimed at understanding the relative contributions of ecological and genetic factors on maturation processes are underway.

The timing of maturation contributes to the remarkable variation in the life history strategies of organisms (Healy et al. 2019) and is highly variable both within and among fishes (He and Stewart 2001). Time from birth to maturity can be as short as three weeks in turquoise killifish, *Nothobranchius furzeri* (Vrtilek et al. 2018), while spiny dogfish, *Squalus acanthias*, can take over 35 years for half of the adults to mature (Saunders and McFarlane 1993). Maturation may be highly variable within and among populations due to various ecological and genetic influences (e.g., Reznick et al. 2006) and the presence of alternative reproductive strategies (Gross 1996; Taborsky 2008). Salmonids, in particular, exhibit high variation in the timing of maturation within species and this variation is responsible for the remarkable life history diversity in this family of fishes (Stearns 1992).

Atlantic salmon, (*Salmo salar* L. 1759, Salmonidae) is an emerging model system for vertebrate maturation research (Fig. 1). Salmonids have slow development times, long lifespans, and reproduce later in life, and therefore offer a natural contrast to species that occupy the fast-end of the pace-of-life continuum (Damsgård et al. 2019; Healy et al. 2019) Ample genomic resources, including a high-quality genome assembly (Lien et al. 2016), and the identification of shared molecular pathways for vertebrate maturation

make inquiries concerning the genetic basis of maturation possible (Barson et al. 2015; Laan et al. 2002; Perry et al. 2014). The timing of maturation in Atlantic salmon is under strong selection and can aid our understanding of evolutionary processes such as the genetic architecture of adaptive traits, local adaptation, and sexual conflict (Mank 2017; Mobley et al. 2019; Oomen et al. 2020). Further, salmon embryos are larger and develop slower than current model fishes (Gorodilov 1996, 2010) making specific embryonic developmental endpoints easier to target for developmental biology.

Life history traits vary widely across populations and latitudes and are particularly variable in land-locked populations (Hutchings et al. 2019). Atlantic salmon exhibit high diversity in life history strategies due, in part, to considerable variation in the timing of maturation and the number of reproductive episodes (iteroparity vs. semelparity) and the potential for males to participate in reproduction at the parr stage (Einum et al. 2002; Erkinaro et al. 2019; Hutchings et al. 2019; Jonsson and Jonsson 1993, 2011; Thorpe 2007). For example, up to 120 different life histories have been reported among anadromous Atlantic salmon in a single river across a 40 year time series (Erkinaro et al. 2019). Maturation in Atlantic salmon is strongly influenced by ecological and genetic factors that affect the duration of particular life stages (Barson et al. 2015; Good and Davidson 2016; Jonsson and Jonsson 2011). Combined, these features make Atlantic salmon an excellent system for addressing questions concerning the causes and consequences of variation in maturation (Barson et al. 2015; Dodson et al. 2013; Jonsson and Jonsson 2011; Stearns 1992).

Atlantic salmon have additional key features that make them an appealing species for maturation research. For instance, their economic importance means that hatchery facilities for common-garden rearing and controlled treatments are abundant (Fleming et al. 1996; Skaala et al. 2019). There are also numerous well-monitored natural systems that provide detailed long-term data on maturation strategies and/or reproductive success over their distribution range (Bacon et al. 2015; Chaput et al. 2018; Erkinaro et al. 2019; Jonsson et al. 1990; McGinnity et al. 2003). Further, genomic resources for this species are well-advanced, with a high quality genome assembly (Lien et al. 2016), commercially-available single nucleotide polymorphism (SNP) arrays (Barson et al. 2015), and



Fig. 1 Atlantic salmon in maturation research. A) Slow development times and large embryo size make Atlantic salmon a good model system for developmental biology. Pictured an Atlantic salmon embryo from the eyed-egg stage stained for the expression of the gene *notch1b*, which is seen in the developing central nervous system (white arrow indicates to eye, black arrow indicates pectoral fin). Image by J. Moustakas-Verho. B) Atlantic salmon show remarkable life history variation. Two year-old male mature parr (top two) represent an alternative reproductive strategy and are smaller than mature post-smolt

males (bottom three) of the same age reared in common-garden conditions. Image by A. House. C) Maturation affects a variety of life history traits including body size and reproduction. Long-term monitoring of natural populations can aid conservation and management programs. Image by M. Ellmen. D) Atlantic salmon are an economically important species. Maturation research may help to increase sustainability of exploited fish stocks and yield in commercial aquaculture. Image by K. B. Mobley

ongoing initiatives to improve functional genome annotation (Macqueen et al. 2017). Historical scale archives containing up to hundreds of thousands of samples are available for a number of populations. These scale archives provide access to historical composition of life history variation as well as genetic material (Czorlich et al. 2018; Erkinaro et al. 2019; Johnston et al. 2013; Nielsen and Hansen 2008; Perrier et al. 2013)(Fig. 2).

Understanding maturation in Atlantic salmon has a number of practical benefits. Atlantic salmon aquaculture is a multi-billion dollar industry where early maturation in cultivation results in significant economic losses (Good and Davidson 2016). Further, wild populations have significant socio-economic

importance: they are an important component of indigenous cultures and artisanal fisheries (COSEWIC 2010; Lam and Borch 2011). Atlantic salmon are also a primary target of recreational and commercial fisheries that brings significant income to remote regions (Pokki et al. 2018). For example, the annual value of recreational fishing trips to a single remote Atlantic salmon river system ranges from € 2.6 to 3.7 million (Pokki et al. 2018). Moreover, information concerning the timing of maturation is needed for developing accurate models for sustainable recreational and commercial fisheries (Kuparinen and Hutchings 2017, 2019; Kuparinen and Merilä 2007; Oomen et al. 2020) and for predicting evolutionary

change as a result of exploitation and climate change (de Roos et al. 2006).

In this synthesis, we review recent advances in the study of maturation in Atlantic salmon. We first provide an overview of maturation at different life history stages. We then summarize the current state of knowledge of the ecological factors, genetic architecture, and molecular and physiological processes that direct maturation. We also provide a guide to practical considerations of maturation to use in conservation, management, and aquaculture efforts. Looking forward, we outline key fields for future research to help fill critical knowledge gaps. We conclude with recommendations to solve outstanding questions concerning maturation.

Definitions

Alevin Recently hatched juveniles that still retain a yolk sac.

Condition factor The relationship between body length and somatic mass used as a proxy for nutritional status and health.

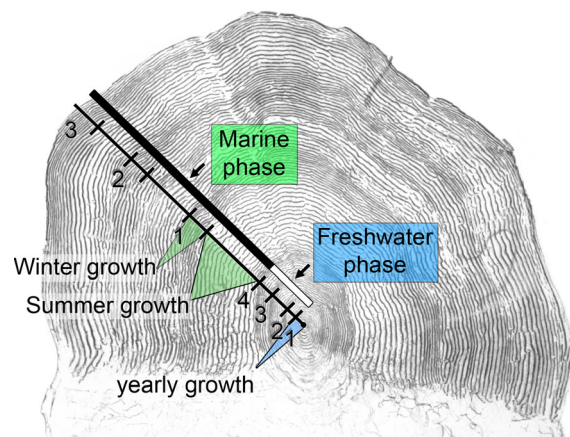


Fig. 2 Salmon scale samples contain important life history information. Time spent in the freshwater phase (freshwater age) and marine phase (sea age) can be accurately calculated based on scale growth rings (circuli). Repeat spawning (iteroparous) individuals can also be identified by scale samples. Location, weight, body size, and sex of the individual are often recorded at the time of collection. DNA of sufficient quality for genetic analyses can be extracted from scales (Johnston et al. 2013). This adult spent four years in the freshwater phase (blue), and three years in the marine phase (green), before it was collected on the spawning ground. Image of scale, Natural Resources Institute Finland (Luke)

Maturation Developmental, physiological, morphological, and behavioral processes leading to reproductive capacity.

Freshwater age The amount of time an individual spends in fresh water prior to smoltification, measured in years. Also known as river age or smolt age.

Fry Free-swimming juveniles that have absorbed their yolk sac and have begun to feed independently.

Genome-wide association study (GWAS) Study using a set of molecular markers (most often SNPs) covering the entire genome aiming to identify genetic variant(s) associated with a phenotypic trait.

Grilse Adult that has returned to fresh water to spawn after spending one winter at sea.

Kelt An adult individual that has recently spawned, often in poor condition.

Mature male parr Male parr with mature gonads capable of reproduction. Also known as precocious parr.

Parr Juveniles that are independently feeding in fresh water. Commonly identified by vertical stripes and colored spots.

Post-smolt A marine-phase pre-adult that has spent less than one winter in the marine environment.

Puberty Development of mature gonads and gametes and other secondary sexual characteristics.

Quantitative trait locus (QTL) A locus that correlates with phenotypic trait variation in a population.

Repeat-spawn Marine-phase adults that spawn in two or more years. Also known as previous-spawner or iteroparous adults.

Return migration Returning from the marine environment to fresh water to spawn after a variable number of years at sea. Also known as spawning migration.

Sea age The amount of time an individual spends in the marine environment prior to returning to fresh water to spawn, commonly measured in sea winters (SW). Also known as sea age at maturity. Individuals that spend a portion of their life at sea before returning to spawn are called anadromous adults.

Single nucleotide polymorphism (SNP) A molecular marker representing variation in a single base-pair of DNA. Currently the most commonly used type of molecular marker.

Smolt A parr that has undergone smoltification to migrate from fresh water to the marine environment.

Smoltification The physiological, morphological, and behavioral processes enabling transition from fresh water to the marine environment.

Spermiation Late stage of spermatogenesis when mature sperm are released from Sertoli cells.

Timing of maturation Age at which an individual reaches reproductive capacity. Also known as age at first reproduction.

Maturation in life history stages

Maturation in Atlantic salmon takes place over several distinct phases of their life cycle. The traditional view was that maturation begins at puberty. This transition involves the development of functional gonads, the production of viable gametes and the development of secondary sexual traits related to reproduction. However, it is now recognized that developmental processes initiated during embryonic development can also influence maturation via sex-specific gene expression and maternal effects (e.g., Jonsson and Jonsson 2018; Thorpe 1994; von Schalburg et al. 2011). Moreover, Atlantic salmon have the ability to reproduce at different times throughout the life cycle and may renew this ability annually as an adult (Thorpe 2007). Based on these observations, we take an inclusive view of maturation and include maturation processes that begin after fertilization, through puberty until reproductive capacity, and these processes may be renewed cyclically until reproductive senescence or death.

Life cycle of Atlantic salmon

Atlantic salmon have a complex life cycle consisting of distinct juvenile, adult, and reproductive life history stages (Fig. 3). Atlantic salmon are generally anadromous, although populations of non-anadromous (i.e., ‘landlocked’) salmon that spend their entire life cycle in fresh water occur in northern Europe and eastern North America (reviewed in Hutchings et al. 2019). Sexually mature anadromous adults reproduce in fresh water during the fall and winter months. Fertilization of eggs takes place externally in gravel nests (redds) excavated by females in river beds (Fleming and Einum 2011; Jonsson and Jonsson 2011). Developing embryos spend a variable amount of time in the gravel bed before hatching the following spring as alevins.

Post-hatching, alevins continue to gain nutrition from the yolk sac for several weeks and remain in the relative safety of the redd. Once the yolk sac is fully absorbed several weeks to months after hatching, alevins ‘swim-up’ from the redd, becoming fry, and commence feeding. Fry then develop into parr, shifting from a diet of microscopic invertebrates to larger invertebrate prey (Jonsson and Jonsson 2011). Parr remain in fresh water for a variable number of years before transitioning to the marine phase. The morphological, physiological, and behavioral transformation to migrate from the fresh water to the marine phase is known as smoltification (Jonsson and Jonsson 2003, 2011; McCormick et al. 1998). However, some males may develop mature gonads and participate in reproduction at the parr stage, prior to smoltification (Fleming and Reynolds 2004; Fleming 1996). These mature male parr represent an alternative male reproductive strategy (Gross, 1996; Myers 1984). Females initiate maturation during or after smoltification (Fjellidal et al. 2018) but typically do not obtain reproductive capacity until after several months at sea. In the marine phase, salmon spend a number of years feeding and growing at an accelerated rate compared to the freshwater phase (Friedland and Haas 1996; Nieceza and Braña 1993; Salminen 1997). The most common maturation strategy is to obtain sexual maturity after a return migration to fresh water after a varying number of years (1–5 SW) spent in the marine environment (Erkinaro et al. 2019; Jonsson and Jonsson 2011). Atlantic salmon can repeat-spawn and a small portion of Atlantic salmon may return to spawn over multiple years (Fleming and Einum 2011; Hutchings and Morris 1985; Jonsson and Jonsson 2011).

Freshwater phase

The freshwater phase is characterized by embryonic development, hatching, and growth until smoltification. Several aspects of growth and development in the freshwater phase have strong effects on maturation. For example, larger eggs develop faster and hatch earlier than smaller eggs (Einum 2003; Gilbey et al. 2005). Earlier hatching times give rise to larger alevins and fry that can be more dominant and have a competitive fitness advantage (Einum 2003; Gilbey et al. 2005; Metcalfe and Thorpe 1992). For example, it has been shown that a difference of less than one

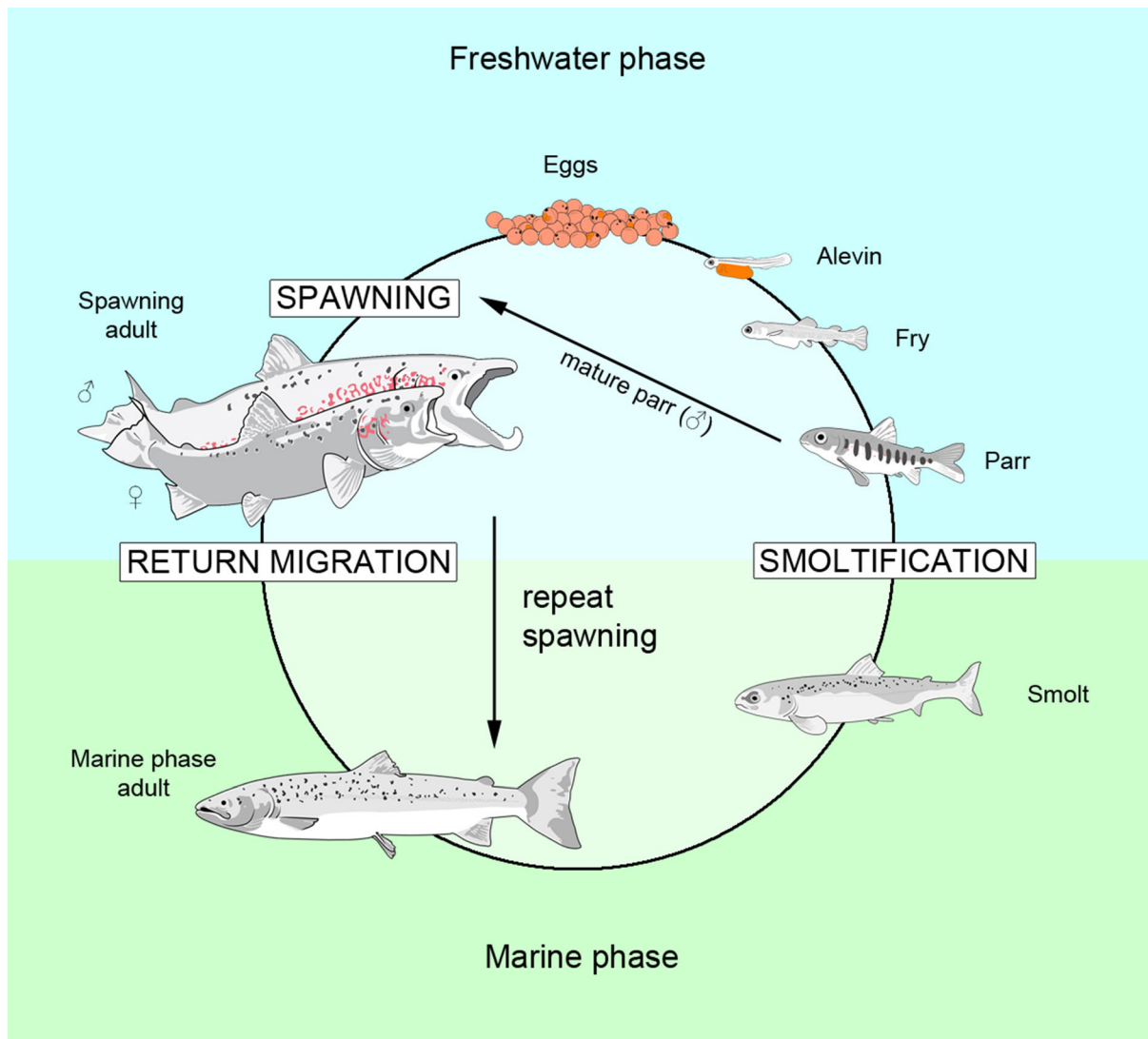


Fig. 3 Atlantic salmon life cycle

week in commencement of first feeding can spell the difference between smolting in the natal year or spending two summers in fresh water (Metcalf and Thorpe 1992). Maternal effects may contribute to this phenomenon as larger and older females generally have larger eggs (Heinimaa and Heinimaa 2004; Kazakov 1981; Van Leeuwen et al. 2016) and higher offspring survivorship (Einum and Fleming 2000). Paternal effects on egg size may also play a role in maturation (Houde et al. 2010; Pakkasmaa et al. 2001) and influence juvenile growth (Garant et al. 2002; Van Leeuwen et al. 2016).

Freshwater age is highly variable within and among populations, ranging from one to eight years after hatching (Erkinaro et al. 2019; Friedland and Haas 1996; Økland et al. 1993). In general, freshwater age increases with latitude due to a shorter growing season (Metcalf and Thorpe 1990). Freshwater age is largely determined by growth in the freshwater phase and affects maturation by influencing growth in the marine phase (Jonsson and Jonsson 2007; Metcalfe 1998; Thorpe 1986). For example, faster growth in the freshwater phase increases the chance of an earlier transition to the marine environment (Metcalf 1998; Thorpe 1986) and a higher chance of male parr

maturation (Aubin-Horth and Dodson 2004; Thorpe 1986). Smaller smolt size, in turn, can result in faster growth in the marine phase (Jonsson and Jonsson 2007).

Mature male parr

During the freshwater phase, male parr may become sexually mature prior to the annual spawning season (reviewed in Fleming 1996; Hutchings and Myers 1994). The percentage of mature male parr in different populations varies widely, ranging from completely absent to all individuals sampled (Heinimaa and Erkinaro 2004; Myers 1984, 1986). The cause for variation in parr maturation is likely a combination of population-specific ecological and genetic factors influencing growth. Faster growth and larger size at hatching increases the potential for males to mature at the parr stage (Aubin-Horth and Dodson 2004; Thorpe 1986). However, once males start to mature as parr, growth is decreased by two fold compared to immature parr (Thorpe 1986; Whalen and Parrish 1999) presumably because they are allocating resources to reproduction rather than growth. Male parr maturation is costly in the wild and reduces the probability of the male surviving and smolting the following year by as much as 44% (Letcher et al. 2002; Myers 1984; Whalen and Parrish 1999). This lowered probability of survival is also likely a result of investment into reproduction. However, a number of experimental studies have not found an association with male parr maturation and the probability of smolting (Debes et al. 2020; Duston and Saunders 1997) suggesting that these two processes may be decoupled.

Mature male parr participate in reproduction (Bacles et al. 2018; Richard et al. 2013; Saura et al. 2008; Taggart et al. 2001; Tenteliet al. 2016; Weir et al. 2010). The reproductive contributions of male mature parr can vary greatly among different populations. On the high end of the spectrum, mature male parr sired up to 87% of offspring in the Nivelles River, France (Grimardias et al. 2010). However, the individual contributions of mature male parr tend to be smaller than anadromous adult males, on average. For example, compared to mature male parr, anadromous males successfully mated four times and sired 12 times more offspring in the same Nivelles River population (Tenteliet al. 2016). Similarly, anadromous males were estimated to have sired 8–10 fold more offspring than

mature male parr in an experiment with wild caught Canadian fish (Jones and Hutchings 2002). Body size may play a role in mature male parr reproduction. For instance, a strong positive correlation between parr body size and reproductive success was reported in at least one breeding experiment (Thomaz et al. 1997). However, other studies have found no relationship (Jones and Hutchings 2002) or a negative relationship (Tenteliet al. 2016) between parr body size and reproductive success. We are now beginning to understand the genetic factors responsible for mature male parr maturation (Lepais et al. 2017; Verta et al. 2020) and detailed information from multi-generational pedigrees and longitudinal studies may help shed light on this topic in the future.

Smoltification

Smoltification is an important stage in salmon life history demarcating the transition from freshwater to marine phases in anadromous salmon. The age at smoltification is a function of growth and body size obtained in the freshwater phase and ecological and genetic factors. During smoltification, juveniles undergo morphological, physiological, and behavioral changes to enable the transition to the marine environment. Smolts take on a silvery coloration and become more streamlined (Jonsson and Jonsson 2011). Physiological transformation includes changes in lipid storage and ion-regulation enabling physiological adaptation to higher salinity (Sheridan 1989). Hormones such as prolactin, growth hormone (Gh), insulin-like growth factor (Igf), and cortisol, increase during smoltification (Sheridan 1989). Smolts lose their positive rheotactic behavior (facing upstream) in order to migrate to sea (Specker et al. 2000; Veselov et al. 1998). In some instances, the process of smolting is reversed (i.e., desmoltification) and these fish remain in the freshwater phase until conditions are met for resmoltification (Fraser et al. 2019; Hansen et al. 1989; Thorpe 1994).

The age at smoltification is likely determined by physiological trade-offs in the freshwater environment associated with growth-resource availability. Previous studies have shown that time spent in the freshwater phase is similar between the sexes and larger, faster growing parr tend to smolt earlier than smaller, slower growing parr (Jonsson and Jonsson 2011; Thorpe 1986, 1994; Thorpe et al. 1998). However, smolt size

is positively correlated with freshwater age; fast growing parr smolt at an earlier age and therefore smaller size in Norwegian salmon (Einum et al. 2002; Økland et al. 1993). Thorpe et al. (1998) proposed that a suite of developmental thresholds and growth parameters such as weight and lipid levels determine smolt timing. Juveniles that have sufficient overwinter lipid stores will smolt the following spring, while those that do not postpone smoltification (Metcalf 1998; Thorpe et al. 1998).

Among anadromous salmon, females generally mature in the marine phase after the smolting process. Males, on the other hand, can mature before or after smolting. Mature male parr do not appear to smolt in the same year (Thorpe and Morgan 1980). This observation suggests that males do not have enough energy to support maturation and smolting within the same year. However, males that smolt can mature at sea within the same year (Thorpe and Morgan 1980).

The age at smoltification has direct effects on sea age and reproductive fitness. Earlier smolting individuals tend to spend more time at sea before returning to rivers to spawn (Erkinaro et al. 2019; Jonsson and Jonsson 2011; Salminen 1997) and have higher reproductive fitness due to generally achieving larger size (Mobley et al. 2020). However, smolting early potentially exposes these individuals to higher predation at sea, highlighting a trade-off between smolting and survival (McCormick et al. 1998). There may also be a sex-specific relationship between growth and time spent in fresh water. For example, females that spend more time in fresh water show reduced pre- and post-smolt growth (Einum et al. 2002), and suffer a reduction in reproductive success (Mobley et al. 2020), signifying a sex-specific trade-off between growth at sea, reproductive fitness, and the time spent in fresh water.

Marine phase

The marine phase is associated with rapid growth and fat accumulation that subsequently fuels gonadal development and maturation (O'Connell et al. 2006). Maturation in the marine phase is suggested to be a threshold response that is triggered by body size and/or condition during the spring and fall (Jonsson et al. 2013). Larger body size at the onset of seaward migration and faster post-smolt growth is generally associated with younger sea age (e.g., Chaput et al.

2018; Hutchings and Jones 1998; Jonsson and Jonsson 2007; Salminen 1997). However, in Baltic Atlantic salmon, smaller smolt size is associated with faster growth followed by earlier maturation, suggesting that the relationship between post-smolt size and maturation may be population-specific (Jonsson and Jonsson 2007).

The marine phase is marked by high mortality, which, in turn, may affect the timing of maturation (Olmos et al. 2019). Tagging studies estimate mortalities as high as 70 to 93% (Armstrong et al. 2018; Gregory et al. 2018; Hutchings and Jones 1998; Michielsens et al. 2006; Peyronnet et al. 2008; Strøm et al. 2019; Webb et al. 2007). Marine survival of Atlantic salmon is size- and age-dependent with orders of magnitude higher mortality rates at the post-smolt stage, compared to older and larger adults (Chaput et al. 2003, 2018; Michielsens et al. 2006). High mortality in the marine phase may confer a selective advantage to earlier maturation, such that higher probability of survival before reproduction may offset the advantage of being older and larger at maturity (Hard et al. 2008; Mobley et al. 2020; Thorpe 2007).

Return migration and spawning

During the return migration, Atlantic salmon return to fresh water to spawn, often to their natal rivers. This ability is known as homing (Hendry et al. 2003; Quinn 1993). Atlantic salmon commonly spend one to three years (but up to 5 years) in the marine environment before returning to fresh water to spawn for the first time (Jonsson and Jonsson 2011; Webb et al. 2007). Every additional year in the marine environment results in doubling of individual mass; individuals returning after one year are typically 1–3 kg and 50–65 cm, compared to 10–20 kg and > 100 cm after spending three or more years at sea (Hutchings and Jones 1998; Mobley et al. 2020). The main determinants of return migration timing are not well understood but are likely a mixture of ecological factors, genetics, and physiological status.

Females typically spend more years at sea than males (Barson et al. 2015; Mobley et al. 2020; Niemelä et al. 2006a). This additional time is required as females need approximately six times more energy than males for gonad development and egg production (Fleming 1996; Jonsson et al. 1997). In general, large, multi-seawinter adults arrive earlier on the spawning

grounds (Armstrong et al. 2018; Harvey et al. 2017; Jokikokko et al. 2004; Jonsson et al. 1990; Jutila et al. 2003; Niemelä et al. 2006a; Quinn et al. 2006; Shearer 1990). This may have fitness consequences as early arriving adults may have an advantage in competition for limited spawning sites (Vähä et al. 2011).

Fecundity, the number of offspring (reproductive success) and the number of mating partners (mating success), increases with larger body size and later timing of maturation (Fleming 1998, 1996; Heinimaa and Heinimaa 2004; Mobley et al. 2020, 2019). The timing of maturation in Atlantic salmon represents a classic evolutionary trade-off: individuals that spend more time at sea before returning to fresh water to spawn have higher reproductive success due to their larger size but also have a higher risk of mortality prior to first reproduction (Fleming and Einum 2011; Mobley et al. 2020). Increased reproductive success among older, and therefore larger, individuals is potentially due to their increased competitive ability on the spawning grounds. Differences in competitive ability are likely mediated by size- and age-related differences in aggression and courtship behaviors, gamete competition, and mate choice (Auld et al. 2019; Fleming 1998; Gage et al. 2004; Mjølnerod et al. 1998). For example, body size affects dominance hierarchies, with larger females defending high quality spawning areas [e.g., fast flowing water (Crisp and Carling 1989)] and thus obtaining higher mating and reproductive success (Fleming 1996; Fleming and Einum 2011). Larger males also compete more successfully for access to nesting females (Fleming 1996, 1998; Fleming and Gross 1994). There is also the potential for sex-specific selection and/or sexually antagonistic selection (e.g., sexual conflict) over reproduction to affect maturation in Atlantic salmon (Barson et al. 2015; Mobley et al. 2020).

Repeat spawning and reproductive senescence

In some populations of Atlantic salmon, a proportion of adults may return to spawn in several different years, although the number of these repeat-spawners is generally low (< 10%) (Fleming and Reynolds 2004; Fleming 1996). Individuals that repeat spawn usually overwinter in fresh water following their first spawning event prior to returning to sea and are known as kelts. Currently, reproductive senescence (Lemaître and Gaillard 2017) is unknown in Atlantic salmon and

they are assumed to reproduce throughout their lifetime. For example, one of the oldest recorded Atlantic salmon is a 14-year-old female from the Teno River with four spawning migrations and a total of six years at sea prior to capture (Erkinaro et al. 2019). A 14 year-old individual has also been reported among landlocked salmon (Hutchings et al. 2019).

Alternative reproductive strategies

Males with distinct sexual maturation phenotypes coexist in many salmon populations (Fleming 1996; Hutchings and Myers 1994). This phenotypic diversity can give rise to different male reproductive strategies based on size and maturation at different life-history phases (Aubin-Horth and Dodson 2004; Hutchings and Myers 1994). For example, anadromous males guard and court females, while mature male parr attempt to sneak copulations without investing in courtship and mate defense (Fleming 1998; Gage et al. 1995; Hutchings and Myers 1994). Compared to anadromous males, mature male parr have significantly smaller gonads in terms of absolute size, a greater proportion of motile spermatozoa, and greater sperm adenosine triphosphate (ATP) content (Vladić 2001; Vladić et al. 2002). Thus, mature parr invest relatively more in sperm quality and sperm numbers in relation to body size than anadromous males in order to compete for fertilizations. Evidence supports the adoption of a particular reproductive strategy being a threshold trait and may be genetically determined in different populations (Hutchings 2011; Hutchings and Myers 1994; Piché et al. 2008).

In populations that have polymorphism in sea age, there is a strong positive correlation between sea age, and therefore body size, and reproductive fitness (Mobley et al. 2020). However, smaller anadromous males may be able to obtain some reproductive success by sneaking copulations or mimicking female behaviors allowing them to remain near spawning pairs (Fleming and Einum 2011; Foote et al. 1997). Females do not appear to display alternative reproductive strategies. Females may mature at a small size in some landlocked populations (Gibson et al. 1996; Hutchings et al. 2019), although evidence for females to mature as parr is scant (Bagliniere and Maisse 1985; Power 1958).

Ecological factors affecting maturation

A variety of abiotic and biotic ecological factors influence maturation in Atlantic salmon, and these factors generally reflect the habitats and conditions encountered during different life history phases. Here, we present ecological patterns and processes that have been shown to affect maturation.

Freshwater phase

Numerous environmental factors can influence embryonic development and survival, which in turn can influence maturation processes in later life history stages (Table 1). For example, developing embryos are sensitive to temperature, oxygen levels, and sedimentation (Hamor and Garside 1976; Julien and Bergeron 2006; Peterson et al. 1977). Normal embryonic development takes place within a narrow temperature range with high mortality at low and high extremes (Hamor and Garside 1976). Under experimental conditions, higher incubation temperatures during embryonic development increase growth and performance in juveniles (Burgerhout et al. 2017; Finstad and Jonsson 2012), that in turn may affect reproductive allocation in adults (Finstad and Jonsson 2012; reviewed in Jonsson and Jonsson 2014; 2016; Jonsson et al. 2014). However, faster development comes at a cost to growth, as embryos incubated in warmer water are generally smaller than those raised in lower temperatures (Peterson et al. 1977). Incubation temperature does not appear to influence growth to first feeding (Peterson and Martin-Robichaud 1989). Jonsson and Jonsson (2018) reported that embryos experimentally reared in warmer water temperatures delayed their return spawning migration by two weeks demonstrating that incubation temperature influences maturation in the marine phase.

Temperature continues to be important for growth, physiology, and behavior during the alevin and parr stages (Adams and Thorpe 1989; reviewed in Elliott and Elliott 2010; Koskela et al. 1997). Metabolic processes are sensitive to environmental changes, and food consumption correlates positively with water temperature (Elliott 1991; Koskela et al. 1997; Oligny-Hébert et al. 2015). Higher temperature may also increase male parr maturation (Debes et al. 2019; Fjellidal et al. 2011), although this temperature effect is not found in all studies (Baum et al. 2005).

Water flow rate can also influence juvenile growth (reviewed in Finstad et al. 2011). An increase in water flow generally results in increased food abundance but a decrease in the capture efficiency of prey (Metcalf et al. 1997). Moreover, competition for food resources is intense and salmon fry disperse to alleviate intraspecific competition (Brännäs 1995; Gibson 1993). Juvenile salmon become territorial and individuals compete with each other for optimal habitat (Keenleyside and Yamamoto 1962). Here, the supposition is that individuals that are more competitive occupy better habitat and grow faster than those that do not. Earlier feeding fry are more dominant, and therefore individuals that hatch earlier than others may outcompete and mature earlier than their conspecifics (Metcalf and Thorpe 1992). However, emerging earlier from the redd may come at a cost of higher predation risk (Brännäs 1995).

Smoltification

Photoperiod length, signaling changes in season, is an important cue for smoltification (McCormick et al. 2002, 2007; Metcalf and Thorpe 1990; Saunders and Henderson 1970). Photoperiod affects hormonal levels such as insulin-like growth factor (Igf), and growth hormone that are associated with smoltification (McCormick et al. 2002). Experiments increasing temperature and photoperiod demonstrate that these factors interact to increase growth and maturation during and after smoltification (Fjellidal et al. 2011; Imsland et al. 2014; McCormick et al. 2002, 2007). Food restriction (Thorpe and Metcalf 1998) and reduced water flow (Hosfeld et al. 2008) can also increase the time to smoltification.

A recent common garden study that partitioned genetic and environmental effects found that environmental factors such as water temperature were important for smoltification. However, for a given temperature, genetic factors were more important than environmental effects in predicting smoltification probability (Debes et al. 2020).

Marine phase

Numerous ecological factors may influence salmon maturation during the marine phase (Table 1). However, due to the vast geographical distances that salmon cover at this stage (O'Connell et al. 2006), it is

Table 1 Examples of ecological factors affecting maturation in Atlantic salmon. Studies are listed chronologically according to life history stage and factor with a summary of the major findings

Phase/ Stage	Factor(s)	Summary of findings	References
<i>Freshwater Phase</i>			
Embryo	Temperature, oxygen, water exchange	Increased incubation temperature increased development rate and decreased survival. Developmental rate and survival increase with increasing dissolved oxygen and with increasing rate of water exchange	Hamor and Garside 1976
Embryo	Temperature	Increased incubation temperature decreased size of eyed eggs and alevins	Peterson et al. 1977
Embryo	Temperature	Incubation temperature prior to swimup had no effect on fry growth during initial feeding. Increased temperature at first feeding increased growth of fry	Peterson and Martin-Robichaud 1989
Embryo	Temperature	Parr growth was higher in warmer incubation temperature treatments. Temperature experienced after embryo incubation did not affect growth performance of juveniles	Finstad and Jonsson 2012
Embryo	Temperature	Increased incubation temperature influenced egg size and gonad mass of males and females relative to body size. Incubation temperature did not influence age at maturity or fecundity in either sex	Jonsson et al. 2014
Embryo	Temperature	Increased incubation temperature in the two months prior to hatching increased mass of eggs in next-generation (F1) females	Jonsson and Jonsson 2016
Embryo	Temperature	A 4°C increase in incubation temperature doubled the growth as measured by weight gain in later stages (start feeding—> adult at harvest). Variation in epigenetic methylation patterns may help to explain differences in skeletal muscle growth and thermal plasticity	Burgerhout et al. 2017
Embryo	Temperature	Embryos incubated in warmer temperatures returned to spawn earlier than those incubated in colder temperatures as adults	Jonsson and Jonsson 2018
Embryo	Sedimentation	Increases in fine sediment decreases survival of embryos	Julien and Bergeron 2006
Fry	Interspecific competition	Early immigrating fry are more at risk to predation than later immigrating fry	Brännäs 1995
Fry	Interspecific competition	Earlier-feeding fry are dominant over later immigrating fry. Dominant individuals have a higher growth rate	Metcalf and Thorpe 1992
Parr	Temperature	Increased temperature increased feed intake and growth rate among hatchery-raised 1 + parr. Lipid deposition increased with temperature	Koskela et al. 1997
Parr	Temperature	Increased temperature increases metabolic rate of parr	Oligny-Hébert et al. 2015
Parr	Temperature, photoperiod	Increase in 5°C above ambient temperature increased male maturation and increased oocyte size in females. Advanced photoperiod did not affect maturation	Adams and Thorpe 1989
Parr	Water flow, nighttime light intensity	Optimal foraging efficiency is influenced by an interaction between water velocity and nighttime light intensity. On darker nights, parr prefer slower moving currents and vice versa	Metcalf et al. 1997
Parr	Interspecific competition	Dominant individuals are associated with optimal growth and survival	Keenleyside and Yamamoto 1962
Mature male parr	Temperature	Male parr maturation increases with increased temperature during the first winter in fresh water	Duston and Saunders 1997
Smolt	Photoperiod	Increased photoperiod during the spring increases growth and smoltification	Saunders and Henderson 1970
Smolt	Temperature, photoperiod	Age at smoltification was positively correlated with latitude. 82% of variation in age at smoltification was explained by growth as a function of temperature and photoperiod	Metcalf and Thorpe 1990

Table 1 continued

Phase/ Stage	Factor(s)	Summary of findings	References
Smolt	Temperature, food availability	A 2°C temperature difference increased 1+ parr smoltification probability from 0.42 to 0.76, but a 6 week food restriction the previous autumn did not affect smoltification probability	Debes et al. 2020
Parr, smolt	Temperature, photoperiod	Increased temperature increases growth and osmoregulatory activity. Photoperiod cues hormonal signaling to advance smoltification	McCormick et al. 2002
Parr, smolt	Temperature, photoperiod	Increased photoperiod increases hormones associated with smoltification in smolts but not parr	McCormick et al. 2007
Parr, smolt	Photoperiod, temperature	Higher temperature and continuous light triggers maturation during and after smoltification in male salmon	Fjellidal et al. 2011
Pre, post-smolt	Temperature, photoperiod	Growth and maturation highest in continuous light. Higher proportion of male maturation was greater under higher temperature. Temperature and photoperiod interact to determine maturation	Imslund et al. 2014
Smolt	Food availability	Food-restricted individuals are smaller and had lower survivorship during seawater challenge	Thorpe and Metcalfe 1998
Smolt	Oxygen	Smolts experimentally exposed to high oxygen environments had higher growth and were in better condition in both freshwater and saltwater environments	Hosfeld et al. 2008
<i>Marine phase</i>			
Post-smolt (< 1SW)	Temperature	Post-smolt survival is negatively affected by earlier than normal increases in temperature in nursery areas	Friedland et al. 2003
Post-smolt (< 1SW)	Temperature	Contrasting evidence that post-smolt growth during the first year at sea is negatively or positively correlated with sea surface temperature	Friedland et al. 2005
Post-smolt (< 1SW)	Temperature	Temperature significantly influences post-smolt growth rate, feed intake and feed conversion efficiency and stomach evacuation rate	Handeland et al. 2008
Post-smolt (< 1SW)	Temperature, food quality	Increased temperature and increased food quality (higher lipids to protein ratio) increased growth rate and early male maturation	Jonsson et al. 2013
Grilse (1SW)	Temperature	Enhanced growth and higher survivorship of 1SW fish correlated with higher sea surface temperature	Friedland et al. 2000
Grilse (1SW)	Food availability	Dietary restriction decreased condition factor and maturation of both male and female grilse	Duston and Saunders 1999
Multi-seawinter	Temperature	Increased sea temperature is associated with larger numbers of >1SW fish and fewer grilse (1SW)	Martin and Mitchell 1985
Post-smolt (< 1SW)	Photoperiod	Artificially longer photoperiods increased growth rate and maturation percent and advanced ovulation time of females	Hansen et al. 1992
Adult	Photoperiod	Exposing salmon to constant light in winter reduces male maturation then those exposed to a natural photoperiod	Schulz et al. 2006
Adult	Temperature, prey availability	Increased seawater temperature at smoltification positively increased proportion of returning adults and may be related to diet	Hvidsten et al. 2009

currently difficult to pinpoint the specific ecological factors influencing maturation at sea (Thorpe et al. 1998). Despite this, a variety of methods such as mark-recapture, common garden experiments, and scale analyses (Fig. 2) have provided insights indicating that marine environmental factors including

temperature, diet, photoperiod, and salinity all likely contribute to variation in maturation (reviewed in Good and Davidson 2016; Jonsson and Jonsson 2011).

Temperature is perhaps the best studied marine environmental factor influencing Atlantic salmon maturation (reviewed in Good and Davidson 2016;

Jonsson and Jonsson 2011) (Table 1). In general, higher water temperatures are associated with earlier maturation (reviewed in Jonsson and Jonsson 2011). In the wild, warmer conditions during the post-smolt stage are associated with increased mortality in North American Atlantic salmon (Friedland et al. 2005, 2003). In contrast, higher sea surface temperature (SST) in North European coasts is associated with higher growth and survivorship of 1SW grilse (Friedland et al. 2000). The temperature effect on maturation may also interact with nutrition (Friedland et al. 2005). For example, higher temperatures increase the likelihood of early maturation in conjunction with abundant and high quality (e.g., high lipid content) food (Handeland et al. 2008; Jonsson et al. 2013). On the other hand, increased temperatures may enhance basal metabolic activity and negatively affect growth and/or survival via density-dependent effects (Friedland et al. 2003).

Salmon use seasonal changes in photoperiod as a proximate maturation cue during the marine phase (Bromage et al. 2001; Hansen et al. 1992; Schulz et al. 2006; Taranger et al. 2010; Taranger et al. 1999). Experimentally manipulating photoperiods, such as shortening day length earlier in the growing season, can decrease the proportion of fish reaching puberty, while delaying shortening of photoperiods to later results in more maturation (reviewed in Taranger et al. 2010). Maturation is also affected by the interaction between photoperiod and water temperature (Imslund et al. 2014). Elevated temperature combined with continuous light can trigger male Atlantic salmon to mature during and immediately after smoltification (Fjellidal et al. 2011; Imslund et al. 2014). Atlantic salmon spawning rivers cover a wide range of latitudes, and therefore the use of photoperiod as a maturation cue may be population-specific. For instance, photoperiod-associated responses may be mismatched with other environmental cues of maturation, such as temperature, resulting in maladaptive or mismatching phenotypic expression. Although this possibility has not yet been investigated, it may be an important future consideration in the face of climate change.

In general, the initiation of maturation in salmonids is associated with a higher condition factor and therefore is likely dependent upon nutritional status (reviewed in Jonsson and Jonsson 2011). A study on Atlantic salmon in sea cages showed that low food

resources during winter affected growth and condition, resulting in lower proportions of earlier maturing salmon (Duston and Saunders 1999). During the post-smolt stage, salmon that feed on marine fish larvae and crustaceans show an increase in growth (Hvidsten et al. 2009; Rikardsen et al. 2004; Salminen et al. 2001). This rapid accelerated growth then influences maturation during the first year at sea (Friedland and Haas 1996; Friedland et al. 2009; Jonsson et al. 2012; Jonsson and Jonsson 2003; Nicieza and Braña 1993).

The effect of diet on maturation is less well known in the open sea, due both to the difficulty in tracking individuals as well as analyzing dietary composition. However, post-smolts are known to be generalist feeders and adopt a more piscivorous diet later in life (Jacobsen and Hansen 2001). Salmon post-smolt appear to utilize high-lipid, high-energy forage fish such as capelin, herring and lantern fishes that may influence early maturation (Rikardsen and Dempson 2010). Currently, it is unclear how genetic factors interact with diet to influence maturation. A recent study by Aykanat et al. (2020) quantified the stomach contents of wild adult Atlantic salmon and demonstrated that the *six6* genomic region is linked to gut fullness as well as prey composition, while *vgl3* was marginally linked to prey composition. These results suggest that Atlantic salmon is not only a diet specialist governed by genetic variation in *six6*, but that the genetic basis of diet variation is linked to maturation. Thus, the maturation status of Atlantic salmon populations is likely to have an evolutionary response to alteration in food web structures and changes in resource composition (Bentley et al. 2017; Daufresne et al. 2009; Pershing et al. 2015).

Return migration and spawning

The timing of the return migration and spawning are influenced by ecological cues such as water temperature and flow regimes (Heggberget 1988; Jonsson et al. 1991; Moore et al. 2012; Thorstad et al. 2008; Webb and McLay 1996) as well as genetic factors (Barson et al. 2015; Sinclair-Waters et al. 2020). Yet, little is known concerning how ecological factors affect maturation processes during this critical period. Ecological factors that influence the distance and duration of the return migration likely have an effect on condition that, in turn, may influence reproductive capacity and ultimately reproductive fitness.

Genetics of maturation

Maturation processes during different life history stages were suggested to have a heritable basis over four decades ago (Nævdal et al. 1978). Subsequently, evidence for heritability of maturation processes has accumulated (reviewed in Garcia de Leaniz et al. 2007). For example, the timing of smoltification (Páez et al. 2011), sea age at maturity (Gjerde 1984; Reed et al. 2018; Sinclair-Waters et al. 2020), and male parr maturation (Debes et al. 2019) all have high heritabilities. These results have generated interest in elucidating genomic regions and molecular functions linked to maturation traits. Recently, considerable progress in identifying genes that influence maturation variation in the marine phase have sprung from genome-wide association studies (GWAS) (Ayllon et al. 2015; Barson et al. 2015). However, less is known concerning what genes are responsible for variation in maturation-related processes in other life history stages such as the freshwater phase and smoltification. Likewise, the exact location of genomic polymorphisms within these regions that are causally linked to maturation variation, and the underlying molecular functions are only starting to be unraveled (Verta et al. 2020).

Freshwater phase

Given the heritability of life history traits such as male parr maturation and smoltification timing, there is concerted interest in identifying genetic variation that underlies these traits. Studies examining tens to hundreds of single nucleotide polymorphism (SNP) markers aimed to identify quantitative trait loci (QTLs) associated with the probability of male parr maturation. For instance, Lepais et al. (2017) identified a handful of QTLs associated with male parr maturation (Table 2). One large effect QTL was found on chromosome 25 that explained 20.6% of the variation in male parr maturation threshold values (Lepais et al. 2017). This QTL region spans the *vgll3* gene, which has been previously identified as a large-effect locus for Atlantic salmon sea age (Ayllon et al. 2015; Barson et al. 2015) and its association with male parr maturation has recently been further supported in controlled experiments in several salmon populations (Debes et al. 2019; Verta et al. 2020). This result strongly suggests that the *vgll3* locus plays a key role

in sexual maturity in the freshwater phase. A study by Pedersen et al. (2013) identified multiple QTLs associated with male parr maturation providing further evidence that the trait has a polygenic architecture (Pedersen et al. 2013)(Table 2). However, the mapping of these male parr maturation QTLs is coarse due to low SNP density combined with low recombination rate in male Atlantic salmon (Lien et al. 2011). Pedersen et al. (2013) also identified several genomic regions associated with smoltification timing (Table 2). This included regions containing genes known to undergo expression changes [*sparc* (Seear et al. 2010)] or potentially influence hormonal changes during smoltification [*ghrh* (McCormick et al. 2010)(Table 2)]. Yet, for both male parr maturation and smoltification, an examination of the link between genotype and phenotype using denser marker coverage (e.g., > 10,000 SNP markers) is still lacking. A high density genome scan approach that covers a greater number of haplotype blocks is likely to provide a more detailed understanding of the genetic architecture, underlying traits influencing maturation in the freshwater phase of the Atlantic salmon life cycle.

Marine phase

Early studies aiming to identify the genetic basis of sea age generally lacked statistical power and/or genomic coverage sufficient for giving a clear picture of the genomic regions underlying the trait (Table 2). The age of genomics eliminated these limitations, giving rise to several studies that identified a large-effect locus on chromosome 25 that explains up to 39% of the variation in sea age (Ayllon et al. 2015; Barson et al. 2015)(Fig. 4). The primary candidate gene in the genome region, *vgll3* (*vestigial-like family member 3*), encodes a transcription cofactor involved in cell fate decision in multiple tissues. Verta et al. (2020) found that variation in *vgll3* was associated with gene transcript structure in immature male gonad tissue, suggesting *vgll3* controls testis differentiation. *Vgll3* has been also linked to adipogenesis regulation (Halperin et al. 2013) and therefore also potentially plays a pivotal role in lipid storage and metabolism in Atlantic salmon. The gene is associated with, amongst other things, pubertal timing, growth, and body condition in humans (Cousminer et al. 2013; Elks et al. 2010; Tu et al. 2015). The alternative alleles at the highest associated SNP in the *vgll3* locus conferred

Table 2 Examples of associations between genomic regions and maturation traits in Atlantic salmon. Maturation traits are listed chronologically according to life history stage with a summary of genetic associations found and relevant references.

Positions of genes or loci have the nomenclature “chromosome ID:position” in accordance to the most recent Atlantic salmon genome assembly (ICSASG_v2) (Lien et al. 2016)

Life-history Stage/Trait	Method	Summary of associations between maturation traits and genomic regions	References
<i>Freshwater phase</i>			
Male parr maturation	QTL analysis (100–300 SNPs)	3 QTLs reach genome-wide significance* for male parr maturation: ssa07, ssa12, ssa20. 4 QTLs reach chromosome-wide** significance for male parr maturation: ssa05, ssa09, ssa10, ssa16. (N = 493)	Pedersen et al. 2013
Male parr maturation	QTL analysis (40 SNPs)	1 QTL reaches genome-wide significance for male parr maturation: ssa25. 3 QTLs reach chromosome-wide significance: ssa14, ssa19, ssa25. (N = 142)	Lepais et al. 2017
Male parr maturation	Common garden experiment of parr with known <i>vgll3</i> genotypes	Male parr with the <i>vgll3*EE</i> genotypes reared in common garden conditions had a 10 × higher maturation frequency than males with the <i>vgll3*LL</i> genotype, while <i>vgll3</i> heterozygotes were intermediate (N = 384)	Verta et al. 2020
Early smoltification	QTL analysis (100–300 SNPs)	1 QTL reaches genome-wide significance: ssa23. 3 QTLs reach chromosome-wide significance: ssa05, ssa08, ssa13. (N = 755)	Pedersen et al. 2013
<i>Marine phase</i>			
Early maturation (= 1SW)	QTL analysis (6.5 K SNP array)	1 QTL reaches chromosome-wide significance for male early maturation: ssa21. 1 QTL reaches suggestive significance for male early maturation: ssa10. (N = 81)	Gutierrez et al. 2014
Early maturation (= 1SW)	GWAS (6.5 K SNP array)	5 SNPs reach genome-wide significance for early maturation: ssa10, ssa02, ssa12, ssa13, ssa25. (N = 626)	Gutierrez et al. 2015
Early maturation (= 1SW)	Targeted genotyping of 1 SNP in <i>tead3</i>	Association with <i>tead3</i> (ssa12:79,047,648–79,123,946) and early maturation in males (<i>P</i> -value = 0.046). (N = 79)	Christensen et al. 2017
Early maturation (= 1SW)	GWAS (50 K SNP array)	Polygenic and sex-specific genetic architecture. 13 SNPs reach chromosome-wide significance for freshwater maturation. (N = 1,846) 48 SNPs reach chromosome-wide significance for sea age at maturity. (N = 2,721). No overlap between male and female associations. Two notable candidate loci include <i>magi2</i> (ssa10:60,175,081), <i>picalm</i> (ssa11:81,521,399)	Mohamed et al. 2019
Early maturation (= 1SW)	GWAS (50 K SNP array)	SNPs in <i>vgll3</i> region that are associated with sea age at maturity in European lineages were not associated with early maturation in the North American lineage. However, the early alleles occurred at low frequencies in the study samples 3 SNPs on ssa21 reach genome-wide significance for early maturation (N = 773)	Boulding et al. 2019
Late maturation (≥ 2SW)	QTL analysis (100–300 SNPs)	2 QTLs reach chromosome-wide significance: ssa21 and ssa23. Ssa21 and ssa23 are homologous to chromosomes with maturation QTLs in rainbow trout. (N = 81)	Pedersen et al. 2013
Late maturation (≥ 2SW)	GWAS (6.5 K SNP array)	4 SNPs reach genome-wide significance for late maturation: ssa01, ssa28 6 SNPs reach chromosome-wide significance for late maturation: ssa01, ssa07, ssa16, ssa21. (N = 466)	Gutierrez et al. 2015

Table 2 continued

Life-history Stage/Trait	Method	Summary of associations between maturation traits and genomic regions	References
Late maturation ($\geq 2SW$)	QTL analysis (6.5 K SNP array)	1 QTL reaches chromosome-wide significance for late maturation: <i>ssa18</i> (N = 195)	Gutierrez et al. 2014
Sea age	Isozyme analysis (6 loci)	Non-random distribution of alleles at 1 isozyme locus, MEP-2, in 1SW vs multi-SW individuals. (N = 291–648)	Consuegra et al. 2005
Sea age	GWAS 220 K SNP array	Strong association with <i>vgll3</i> (<i>ssa25</i> :28,654,947–28,659,019) and sea age at maturation. Evidence of sex-dependent dominance at <i>vgll3</i> locus. (N = 1,404)	Barson et al. 2015
Sea age	GWAS pooled sequencing. Targeted sequencing of 2 SNPs in <i>vgll3</i>	Strong association with <i>vgll3</i> (<i>ssa25</i> :28,654,947–28,659,019) and sea age at maturity. 74 significant SNPs (0.1% FDR) outside <i>vgll3</i> region: <i>ssa01-ssa07</i> , <i>ssa09-24</i> , <i>ssa27-29</i> . (N = 20 per pool, 6 pools)	Ayllon et al. 2015
Sea age	Targeted genotyping of 2 SNPs in <i>vgll3</i> region	Correlation between <i>vgll3</i> and probability of maturing after multi-SW versus after 1 SW in three populations in Québec, Canada. Strength of correlation varies across study populations. (N = 1,505)	Kusche et al. 2017
Sea age	Analysis of 2 SNPs genotyped using combination of qPCR and Sequenom MassArray	Association between <i>vgll3</i> and sea age at maturity in males (N = 308), but not females (N = 304), from the <i>Mowi</i> strain of domesticated Atlantic salmon	Ayllon et al. 2019
Iteroparity	Targeted genotyping of 194 SNPs	Individuals homozygous for early allele at <i>vgll3</i> locus are 2.4 times more likely to spawn a second time than individuals homozygous for late allele. (N = 1,135)	Aykanat et al. 2019

*Genome-wide significance level is determined according to a Bonferroni threshold that accounts for the total number of tested SNPs in the entire genome (0.05/# of tested SNPs)

**Chromosome-wide significance level is determined according to a Bonferroni threshold that accounts for only the number of tested SNPs on the focal chromosome (0.05/# of tested SNPs on focal chromosome)

either early (*E*) or late (*L*) sea age (Barson et al. 2015). The *vgll3* locus exhibits incomplete sex-specific dominance that may partially resolve potential sexual conflict in this locus. Furthermore, Christensen et al. (2017) found that after accounting for *vgll3* genotypes, *tead3* (*TEA domain transcription factor 3*) was associated with early maturation. *Tead3* codes for a transcription factor that the *vgll3*-encoded cofactor binds to in order to regulate the Hippo signaling pathway (Figeac et al. 2019; Kjærner-Semb et al. 2018; Kurko et al. 2020; Simon et al. 2017). This indicates that the *tead3* gene may affect early maturation via an interaction with *vgll3*. The effect of *vgll3* on sea age appears to be conserved across all European Atlantic salmon lineages (Atlantic, Barents/White Sea and Baltic Sea lineages), and influences sea age in both

males and females (Barson et al. 2015)(Table 2). Furthermore, a higher proportion of late maturation alleles of *vgll3* are found in late-maturing females than in early-maturing individuals from populations of North American Atlantic salmon suggesting *vgll3* may also be associated with sea age in this lineage (Kusche et al. 2017). Although several GWAS have found a significant association between the *vgll3* region and maturation (Ayllon et al. 2015, 2019; Barson et al. 2015), others examining single North American aquaculture strains have not (Boulding et al. 2019; Mohamed et al. 2019). This discrepancy may be due to different genetic architecture or variable gene-environment interactions among populations/strains. Alternatively, this may be merely due to low genetic variation at the *vgll3* locus in the study samples and/or

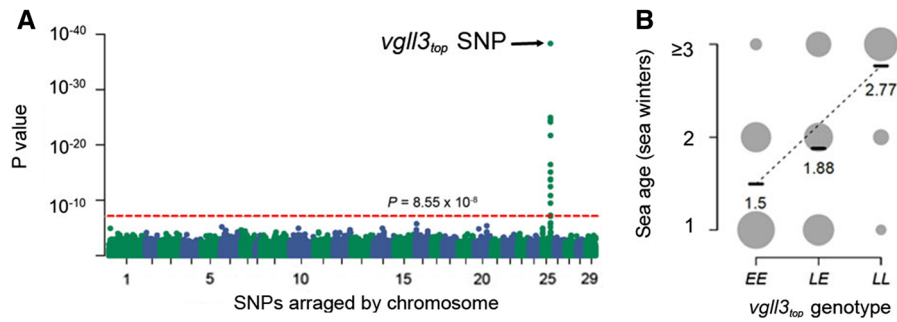


Fig. 4 **a** Genome-wide association plot (Manhattan plot) of 220 k SNPs showing the association between sea age and SNP loci on chromosome 25. Points above the dashed line indicate significant SNPs associated with sea age. The SNP locus with the strongest association, located near the *vgl3* gene, is labelled

vgl3_{top}. **b** Sea age (in seawinters) in relation to *vgl3_{TOP}* genotype. Alleles linked with early and late maturation are labelled *E* and *L*, respectively. Circle areas are proportional to sample size (total $n = 1404$). Black bars indicate mean sea age for each genotype class. Data from Barson et al. (2015)

some studies being underpowered to detect such an association.

A second gene in the genome region significantly associated with sea age on chromosome 25 is the *akap11* gene encoding the A-kinase anchor protein (Barson et al. 2015), that belongs to a family of A-kinases that are expressed throughout spermatogenesis and is important for sperm motility (Reinton et al. 2000). *Akap11* and *vgl3* have recently been shown to have correlated expression in various juvenile life history stages (Kurko et al. 2020). It is therefore possible that *akap11*, along with *vgl3*, may serve important roles in processes leading to maturation.

A number of loci in other genome regions have been linked with sea age at maturity (Table 2). However, these findings are not ubiquitous across studies linking genetics and maturation timing. Higher-powered association studies involving a broad range of populations and aquaculture strains may help to elucidate why such discrepancies are observed. One recent example examining over 11,000 adults from a single aquaculture strain, identified over 100 candidate genes associated with maturation (Sinclair-Waters et al. 2020). These results demonstrate the importance of increasing sample sizes in order to detect genes of smaller effects. Additionally, new evidence suggests that some genes (e.g., *magi2* & *picalm*) may have sex-specific effects on maturation (Mohamed et al. 2019). Studies with large sample sizes and good representation of populations and aquaculture strains including both sexes will be vital to determine the roles of

smaller-effect genes and sex-specific genetic architectures for maturation traits in Atlantic salmon.

Sinclair-Waters et al. (2020) identified another large-effect candidate genome region on chromosome 9, including the gene *six6* (*SIX homeobox 6*), that is strongly associated with maturation. *Six6* encodes a transcription factor of the brain-pituitary–gonadal axis, and is also associated with height and age-at-maturity in humans (Perry et al. 2014) and puberty in cattle (Cánovas et al. 2014). The same region was also strongly associated with maturation in Johnston et al. (2014) and Barson et al. (2015), but following correction for population stratification, the association signal of significance was lost. This may suggest that the region is associated with a correlated trait (e.g., body size or return migration timing) that is also associated with an environmental factor [e.g., river catchment area, (Pritchard et al. 2018)]. The *six6* locus has also been linked with the timing of maturation in several species of Pacific salmon (Waters et al. 2021; Willis et al. 2020) indicating that this genomic region plays a role in maturation and sexual reproduction in other salmonids. The *six6* locus is also associated with variation in return migration timing among Scottish Atlantic salmon populations (Cauwelier et al. 2018). Furthermore, a locus (*Irrc9*) associated with spawning site selection in sockeye salmon, *Oncorhynchus nerka*, is located in the same significant genomic region as *six6* (Pritchard et al. 2018; Veale and Russello 2017).

Sexual conflict and the *vgll3* locus

Atlantic salmon is an interesting model system to investigate questions related to sexual conflict (Barson et al. 2015; Mank 2017). Intra-locus sexual conflict potentially exists at the *vgll3* locus (Barson et al. 2015). Differing phenotypic optima for males and females over the sea age and body size at maturation may result in a genetic “tug-of-war” between the early (*E*) and late (*L*) alleles at the locus (Barson et al. 2015) (Fig. 5). Repeat-spawning is also linked to the *vgll3* locus (Aykanat et al. 2020) and early maturing individuals may recover additional reproductive success if they survive to reproduce again. A survey of 57 populations has shown that *vgll3* alleles are maintained at intermediate frequencies in many populations (Barson et al. 2015), which may be indicative of balancing selection, predicted under intra-locus sexual conflict (Connallon and Clark 2014).

An interesting twist to this scenario is the observation of sex-dependent dominance of the *vgll3* locus, allowing the maintenance of the two allelic forms of *vgll3* in populations of Atlantic salmon (Barson et al. 2015; Kuparinen and Hutchings 2019). Due to the apparent dominance of the *E* allele in males, *EL*, heterozygote males behave like homozygote *EE* males by returning to spawn after 1SW, whereas heterozygote females return to spawn at an intermediate age between both homozygotes (Fig. 5). Potential consequences of sex-specific dominance and additive effects on selection at sea inducing variation in sex-specific allele frequency patterns are supported by simulations and empirical data (Czorlich et al. 2018). Future research should investigate the potential causes and consequences of sexual conflict in this species.

Molecular & physiological processes of maturation

Besides the basic molecular and physiological processes required to maintain normal development, growth, and homeostasis, several regulatory processes are key for maturation in Atlantic salmon. These processes include hormonal control of maturation, gene expression pathways related to maturation processes, and gonadal development. The brain-pituitary–gonadal (BPG) axis is a central player in maturation in vertebrates, including salmon (Taranger et al. 2010). Understanding the molecular and physiological

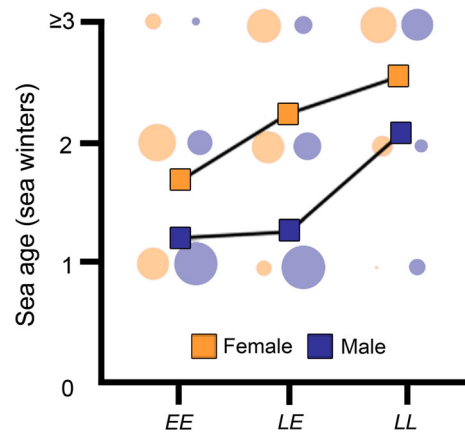


Fig. 5 Sex-specific differences in sea age maturation and incomplete dominance of *vgll3* genotypes. Sea age of females ($n = 693$) and males ($n = 711$) in relation to *vgll3* genotype (*E* = early, *L* = Late). Points indicate predicted average sea age using a logit transformation model (see Barson et al. 2015 for details). Circles are proportional to the number of spawning adults used in the study. Figure based on data from Barson et al. (2015)

processes governing maturation in Atlantic salmon, along with interactions with genetic and ecological factors, helps to pinpoint the key genes and regulatory pathways resulting in maturation variation.

The brain-pituitary–gonadal axis

The BPG axis regulates maturation via neurological and hormonal feedback and is analogous to the hypothalamic-pituitary–gonadal axis in other vertebrates (Ellis 2013). The activation of the BPG axis is induced by different internal and external stimuli, including growth, adiposity, sex hormones, photoperiod, temperature, salinity and social cues (Choi et al. 2014; Gielen et al. 1982; Melo et al. 2014; Taranger et al. 2010). Many of these stimuli are functionally related to growth and/or energy acquisition and storage, which, in turn, affect the rate of lipid acquisition and storage (Jonsson and Jonsson 2003; Rowe et al. 1991; Taranger et al. 2010). The onset of maturation can be modulated by the rate of lipid storage in the body and the specific levels and types of lipids stored, whereby low lipid levels act as a factor limiting early maturity in salmonids (Jenkins et al. 2019; Rowe et al. 1991; Sheridan and Harmon 1994; Silverstein et al. 1997).

Considerable research has been conducted on understanding how the different components of the BPG axis regulate maturation in salmon and related species. We first consider the brain, pituitary and gonad components of the BPG axis separately and summarize gene expression studies related to the maturation process in Atlantic salmon (Table 3). Finally, we consider molecular and physiological factors affecting variation in maturation timing.

Brain

The brain is the first organ in the BPG axis that integrates cues of factors affecting maturation. The main brain hormone that induces this axis is gonadotropin-releasing hormone (GnRH) secreted from the GnRH neurons that form during early embryonic development (Parhar et al. 1995). A key molecular mediator of GnRH release in mammals, the neuropeptide kisspeptin, has been examined recently in fish (Ohga et al. 2018), but its role remains controversial. In Atlantic salmon, co-expression of the kisspeptin receptor gene, *skissr*, and sGnRH3 in the brain indicates that kisspeptin may affect GnRH secretion directly, primarily during at the onset of maturation and later stages of gonad development (Chi et al. 2017). Different internal and external cues are known to induce the BPG axis and GnRH release, including photoperiod changes which are sensed both in the hypothalamus and saccus vasculosus, a special sensor of seasonal changes in day length in the fish brain (Nakane et al. 2013). Long photoperiod increases expression of both *skissr* and *gnrh3* in the hypothalamus and saccus vasculosus in salmon, suggesting that photosensing has a direct effect on the BPG axis via the kisspeptin system (Chi et al. 2017).

The link between energy stores, especially that of lipids, and reproduction is conserved in vertebrates, and the hormone leptin is one of the molecules conveying such metabolic signals to the brain. Although leptin influences Atlantic salmon fat accumulation, its role seems to be something other than adiposity signaling via the BPG axis, as sexual maturation does not directly induce expression changes in the leptin receptor gene, *lepr*, in the brain (Trombley et al. 2014). However, long photoperiods reduce leptin receptor A1 gene, *AsLRa1*, expression levels in both the hypothalamus and saccus

vasculosus, thereby increasing appetite and food intake which, in turn, results in higher growth rate (Chi et al. 2019).

Mature male parr demonstrate an upregulation in genes involved in energy production and homeostasis, metabolism, growth, and feeding, such as pro-opiomelanocortin and melanin-concentrating hormone 2 (Aubin-Horth et al. 2005, 2009; Guiry et al. 2010; Kawauchi 2006; Takahashi et al. 2009), and genes regulating lipid metabolism such as apolipoproteins and glycerol-3-phosphate dehydrogenase (Aubin-Horth et al. 2009)(Table 3). In addition to the upregulation of genes associated with energy status and metabolism in mature male parr, differential gene expression patterns are reported in the brain. Some of these associated genes are involved in spatially and temporally correct navigation, maintenance of osmotic balance, body color modification and coping with mechanical and social stress (Table 3). These results indicate that molecular signals originating from the brain prepare salmon physiologically and behaviorally for maturation. Accordingly, expression changes have been observed in genes encoding prolactin involved in migration and osmoregulation (Whittington and Wilson 2013), Na/K ATPase alpha regulating in osmotic balance of neuronal cells (Vornanen and Paajanen 2006), and pro-opiomelanocortin and melanin-concentrating hormone 2 controlling pigmentation (Kawauchi 2006; Takahashi et al. 2009). Additional genes associated with maturation include ependymin which is essential in long-term memory (Piront and Schmidt 1988), as well as vasotocin and isotocin involved in circadian and seasonal cycles, responses to stress, cardiovascular function, osmoregulation and regulation of social behavior (Balment et al. 2006; Chou et al. 2011; Godwin and Thompson 2012; Kasper et al. 2017)(Table 3). Although the details are not well understood, signals from the brain trigger the production and/or release of hormones in the next component of the BPG-axis, the pituitary.

Pituitary

The pituitary is a key organ translating signals from the brain into endocrine signaling hormones that influence maturation and e.g. regulate gonad and germ cell development. The main pituitary hormones in the BPG axis are two gonadotropins, follicle-stimulating hormone (Fsh) and luteinizing hormone (Lh), which

Table 3 Examples of gene expression studies related to maturation in Atlantic salmon. Gene expression studies are listed according to target tissue and life history stage

Comparison	Method, target tissue	Summary of gene expression patterns during maturation	References
Immature vs. mature male parr	Microarray, qPCR <i>Brain</i>	<i>Prl</i> (prolactin) and <i>pomc</i> (pro-opiomelanocortin), and other genes in biological processes such as circadian rhythm, neural plasticity, reproduction, growth, metabolism, and energy production and feeding are upregulated in mature compared to immature parr	Aubin-Horth et al. 2005
Immature vs. mature male parr	Microarray, qPCR <i>Brain</i>	<i>Hba1</i> and <i>hba4</i> (alpha globin 1 and 4), <i>hbb</i> (beta globin), <i>apoe</i> (apolipoprotein E), <i>ciapin1</i> (anamorsin), <i>ctsd</i> (cathepsin D), isotocin 2, vasotocin 1 and <i>cof2</i> (cofilin 2) genes are downregulated and <i>ctnnbip1</i> (beta-catenin interacting protein 1), <i>mch2</i> (melanin-concentrating hormone 2) and <i>tgfb2</i> (transforming growth factor beta 2) are upregulated among other genes in mature compared to immature parr	Guiry et al. 2010
Immature vs. mature male parr, early male and female migrants (smoltification in present year) vs. late male and female migrants (smoltification next year or later)	Microarray <i>Brain</i>	Globin alpha and beta and retinol binding protein genes are upregulated both in mature parr and early migrants compared to immature parr and late migrants, respectively. Apolipoprotein, cGMP-phosphodiesterase, class III alcohol dehydrogenase, ependymin, glycerol-3-phosphate dehydrogenase, gonadotropin alpha 1, gonadotropin alpha 2, gonadotropin beta (Fsh), Na/K ATPase alpha, prolactin, pro-opiomelanocortin, rod-like opsin, selenoprotein, somatolactin, somatotropine, thr3 and transposase genes are upregulated in mature parr but downregulated in early migrants compared to immature parr and late migrants, respectively	Aubin-Horth et al. 2009
Immature vs. maturing male parr	qPCR <i>Pituitary</i>	<i>Fshb</i> (follicle-stimulating hormone β -subunit) and <i>lhb</i> (lutinizing hormone β -subunit) are upregulated in maturing compared to immature parr. Expression of <i>fshb</i> increases during early spermatogenesis and remains high until late spermatogenesis but slightly decreases at spermiation. <i>Lhb</i> expression slightly increases during early- and mid-spermatogenesis and then highly raises at late spermatogenesis and peaks at spermiation	Maugars and Schmitz 2008a
Immature vs. maturing male parr	qPCR <i>Pituitary</i>	<i>Fshb</i> and <i>lhb</i> are upregulated in maturing compared to immature parr. Expression of <i>fshb</i> declines at late spermatogenesis. <i>Lhb</i> expression gradually increases during spermatogenesis and peaks at spermiation	Trombley et al. 2014
Immature vs. maturing male parr	qPCR <i>Pituitary</i>	<i>Fshb</i> , <i>lhb</i> and <i>gnrhr2bbx</i> are upregulated in maturing compared to immature parr. Expression of <i>gnrhr2bbx</i> increases from early to late spermatogenesis	Ciani et al. 2020

Table 3 continued

Comparison	Method, target tissue	Summary of gene expression patterns during maturation	References
Immature vs. maturing male parr	ddPCR <i>Testes plus 9 other tissues</i>	Temporal analysis of <i>vgll3</i> expression in ten tissues across the first year of salmon development revealed a 66% reduction in testicular <i>vgll3</i> expression in maturing male parr. <i>vgll3*LL</i> genotype was associated with a tendency to delay puberty and also with expression of a rare transcript isoform of <i>vgll3</i> pre-puberty	Verta et al. 2020
Immature vs. maturing male grilse	qPCR <i>Pituitary</i>	<i>Fshb</i> , <i>lhb</i> and <i>gnrhr4</i> (gonadotropin-releasing hormone II receptor) are upregulated in maturing compared to immature grilse. Expression of <i>fshb</i> increases during early- and mid-spermatogenesis but declines at spermiation. <i>Lhb</i> expression slightly increases during early- and mid-spermatogenesis and then peaks at spermiation. Expression level changes during spermatogenesis were modest for <i>gnrhr4</i>	Schulz et al. 2019
Immature vs. maturing male post-smolts	qPCR <i>Pituitary</i>	<i>Fshb</i> , <i>lhb</i> and <i>gnrhr4</i> are upregulated in maturing compared to immature post-smolts. Expression of <i>fshb</i> increases during early and mid-spermatogenesis while decreases until spermiation. <i>Lhb</i> and <i>gnrhr4</i> mRNA levels increase gradually and peak at spermiation	Melo et al. 2014
Immature vs. maturing female post-smolts	qPCR <i>Pituitary</i>	<i>Fshb</i> and <i>lhb</i> are upregulated in maturing compared to immature post-smolts. Expression of <i>fshb</i> gradually increases from oil droplet stage to mid-vitellogenesis with secondary yolk vesicles and maintains at a high level during late vitellogenesis with larger oocytes in tertiary yolk stage. <i>Fshb</i> mRNA level increases again and remains high during ovulation and post ovulation. <i>Lhb</i> expression increases gradually from oil droplet stage to late vitellogenesis and peaks at the onset of ovulation	Andersson et al. 2013
Immature vs. maturing female post-smolts	qPCR <i>Pituitary</i>	<i>Sl alpha</i> and <i>sl beta</i> (somatolactin) are upregulated in maturing compared to immature post-smolts. Expression of <i>sl alpha</i> and <i>sl beta</i> increases during late vitellogenesis and again during ovulation, and decreases post ovulation	Benedet et al. 2008
Immature vs. maturing female post-smolts	qPCR <i>Pituitary</i>	<i>Gh</i> (growth hormone) is upregulated in maturing compared to immature post-smolts. Expression of <i>gh</i> is increased during early and mid-vitellogenesis and decreased during ovulation but raised again post ovulation	Benedet et al. 2010
Immature vs. maturing female post-smolts	qPCR <i>Ovary</i>	<i>Fshr</i> (follicle stimulating hormone receptor) is expressed at relatively stable level during vitellogenesis and maturation but upregulated post ovulation. <i>Lhcgr</i> (luteinizing hormone receptor) is upregulated in maturing compared to immature post-smolts. Expression of <i>lhcg</i> gradually increases from oil droplet stage to late vitellogenesis and ovulation but decreases post ovulation	Andersson et al. 2013

Table 3 continued

Comparison	Method, target tissue	Summary of gene expression patterns during maturation	References
Immature vs. early maturing female post-smolts	qPCR <i>Ovary</i>	<i>Vgll3</i> (vestigial-like family member 3) is upregulated during early vitellogenesis (early maturing) compared to oil drop (maturing) stage in post-smolts	Kjærner-Semb et al. 2018
Immature vs. maturing females	RNA-seq, qPCR <i>Ovary</i>	<i>Inha</i> (protein inhibin alpha chain) is upregulated in maturing (early vitellogenic) compared to immature females	Kleppe et al. 2020
Immature vs. maturing male parr	qPCR <i>Testis</i>	<i>Fshr</i> and <i>lhr</i> are upregulated in maturing compared to immature parr. Expression of <i>fshr</i> and <i>lhr</i> increases during early and mid-spermatogenesis. <i>Fshr</i> mRNA levels peak at spermiogenesis, but <i>lhr</i> mRNA levels continue to rise at spermiation	Maugars and Schmitz 2008a
Immature vs. mature male parr	Microarray, qPCR <i>Testis</i>	<i>Amh</i> (anti-Müllerian hormone), alpha and beta globin, <i>colla2</i> and <i>colla3</i> (collagen 1A2 and 1A3), transferrin and zinc finger protein genes are downregulated and <i>apoe</i> and <i>apoc1</i> (apolipoproteins E and C-1), <i>lpl</i> (lipoprotein lipase), anti-leukoproteinase precursor and <i>six6</i> (SIX homeobox 6) are upregulated among other genes in mature compared to immature parr. <i>Amh</i> is downregulated in mature compared to immature adult	Guiry et al. 2010
Immature vs. maturing male parr	qPCR <i>Testis</i>	<i>Ff1b</i> (FTZ-F1 homolog), <i>3b-HSD</i> (3b-hydroxysteroid dehydrogenase/D5–D4–isomerase), <i>11b-HSD</i> (11b-hydroxysteroid dehydrogenase), <i>StAR</i> (steroidogenic acute regulatory protein), <i>P450scc</i> (cytochrome P450 cholesterol side-chain cleavage enzyme), <i>P450c17</i> (cytochrome P450 17a-hydroxylase/17,20-lyase) and <i>P45011b</i> (cytochrome P450 11b-hydroxylase) are upregulated in maturing compared to immature parr. Expression of <i>3b-HSD</i> , <i>11b-HSD</i> and <i>P450scc</i> gradually increases throughout spermatogenesis. <i>P450scc</i> mRNA levels strongly peak at spermiation. <i>StAR</i> and <i>P450c17</i> expression increases during early spermatogenesis, decreases during mid-spermatogenesis, increases again during spermiogenesis and peaks at spermiation. <i>P45011b</i> mRNA levels increase during spermiogenesis. <i>Amh</i> is downregulated during early to mid-spermatogenesis and further spermiogenesis in maturing compared to immature parr, but reaches its initial level at spermiation	Maugars and Schmitz 2008b
Immature vs. maturing male parr	qPCR <i>Testis</i>	<i>Lepr</i> (leptin receptor) is upregulated in maturing compared to immature parr. Expression of <i>lepr</i> increases throughout mid- to late spermatogenesis	Trombley et al. 2014

Table 3 continued

Comparison	Method, target tissue	Summary of gene expression patterns during maturation	References
Immature vs. maturing male grilse	qPCR <i>Testis</i>	<i>Fshr</i> , <i>lhr</i> , <i>ara1</i> , <i>ara2</i> (androgen receptor type 1 & 2) and <i>amh</i> are downregulated gradually during spermatogenesis in maturing compared to immature grilse. The lowest expression for these genes is seen at spermiogenesis and spermiation. <i>Igf3</i> (insulin-like growth factor 3) is upregulated in maturing compared to immature grilse and high levels were maintained during progress of spermatogenesis	Schulz et al. 2019
Immature vs. maturing male post-smolts	RNA-seq, qPCR <i>Testis</i>	<i>Igf3</i> is upregulated and <i>amh</i> downregulated in maturing testis. Pathways that are enriched in immature compared to maturing testis include fatty acid metabolism, biosynthesis of unsaturated fatty acids, cell cycle, mitophagy, vegf signaling and progesterone-mediated oocyte maturation. Enriched pathways in maturing compared to immature testis include Wnt signaling, insulin signaling, apelin signaling, foxo signaling and autophagy	Skaftnesmo et al. 2017
Immature vs. maturing male post-smolts	Microarray, qPCR <i>Testis</i>	<i>Insl3</i> (insulin-like 3) is upregulated and <i>amh</i> downregulated in maturing compared to immature post-smolts. Genes in metabolic, purine and pyrimidine metabolism, glycerolipid metabolism, regulation of actin cytoskeleton, cell cycle and Wnt signaling pathways are upregulated in maturing compared to immature post-smolts	Crespo et al. 2019
Immature vs. maturing male post-smolts	RNA-seq, qPCR <i>Testis</i>	The Hippo signaling genes such as <i>vgl13</i> , <i>tead3</i> (TEA domain transcription factor 3) and <i>nf2</i> (neurofibromin 2), and <i>amh</i> are downregulated, and <i>pcna</i> (proliferating cell nuclear antigen) is upregulated in maturing compared to immature post-smolts	Kjærner-Semb et al. 2018
Immature vs. mature adult males	RNA-seq, qPCR <i>Testis</i>	<i>Inha</i> is upregulated, while <i>gsdf</i> (gonadal soma-derived growth factor) is downregulated in mature compared to immature adults	Kleppe et al. 2020
Immature vs. maturing male parr	qPCR <i>Liver</i>	<i>Lepa1</i> and <i>lepa2</i> (leptin) are upregulated in maturing compared to immature parr. Expression of <i>lepa1</i> and <i>lepa2</i> increases throughout mid- to late spermatogenesis and peaks at spermiation	Trombley et al. 2014

are secreted from specific gonadotropic cells in the pituitary (Nozaki et al. 1990) in response to GnRH stimulation from the brain (Amano et al. 1997). This hormonal signaling has mainly been studied in other salmonid species, but recent gene expression studies have confirmed these findings in Atlantic salmon (Table 3). Upregulation of the gene paralogs encoding the GnRH receptor [*gnrhr4* (Melo et al. 2014; Schulz

et al. 2019) and *gnrhr2bbα* (Ciani et al. 2020)] is seen in the pituitary of maturing males. Increased expression of *fshb* and *lhb* (coding for Fsh and Lh beta-subunits, respectively) is detected in the pituitaries of both maturing males (Ciani et al. 2020; Maugars and Schmitz 2008a; Melo et al. 2014; Schulz et al. 2019; Trombley et al. 2014) and females (Andersson et al. 2013). These studies found that during gametogenesis,

fshb expression is highest during early and mid-stage of spermatogenesis and oogenesis. In contrast, expression of *lhb* peaks at spermiation (Table 3) and the onset of ovulation.

Environmental cues affect hormonal signaling in the pituitary. Exposure of salmon males to salt water increases *gnrhr4* and *fshb* expression, and induces stronger stimulation of the onset of spermatogenesis compared to fresh water (Melo et al. 2014). Decreasing photoperiod induces more efficient *lhb* expression and, therefore, faster completion of spermatogenesis than longer exposure to light (Melo et al. 2014).

Released gonadotropins circulate in the blood and bind to their corresponding receptors in the developing gonads (testes and ovaries) where they contribute to regulating expression of the gonad-secreted sex hormones (Miwa et al. 1994; Yan et al. 1992). Fsh is mainly required to induce and maintain gonadal growth, as evidenced by increased levels of Fsh in the plasma at the onset of vitellogenesis (yolk formation) and spermatogenesis, while Lh peaks in the plasma during spawning, suggesting that it is required for final gonad maturation (Breton et al. 1998; Gomez et al. 1999; Prat et al. 1996; Suzuki et al. 1988a).

Beyond gonadotropins, additional pituitary hormones affecting gonad development and other processes involved in maturation include the somatotropin hormone family members. For example, genes encoding somatotropin (i.e., growth hormone, Gh) and somatolactin are upregulated in the pituitary of mature females (Benedet et al. 2010, 2008)(Table 3). Both of these hormones are known to influence steroid biosynthesis, gonad development, and spawning (Benedet et al. 2008; Le Gac et al. 1993). More specifically, somatolactin is likely involved in the regulation of body coloration, plasma calcium and phosphate metabolism during vitellogenesis, maturation-induced fasting, and lipid metabolism in oocyte maturation (Benedet et al. 2008).

Gonads

The final phase of maturation in the BPG axis is the development of mature gonads. Gonadal differentiation starts during embryonic development, and ovaries and testes are already distinguishable a few weeks after hatching (von Schalburg et al. 2011). The main inducers of gonad development are sex hormones

stimulated by the pituitary-secreted gonadotropins, Fsh and Lh, which bind to their corresponding receptors in the ovary and testis. In the Atlantic salmon ovary, the Fsh receptor gene, *fshr*, is expressed at a stable basal level during maturation and upregulated only post ovulation (Andersson et al. 2013). In maturing male parr, *fshr* expression is upregulated in testis and peaks during late spermatogenesis (Maugars and Schmitz 2008a)(Table 3). These studies also show that the Lh receptor gene, *lhcr*, is upregulated in both maturing ovaries and testes and peaks at ovulation and spermiation, respectively. In contrast to maturing parr, in grilse testes, both *fshr* and *lhcr* downregulate towards the late stages of spermatogenesis (Schulz et al. 2019) (Table 3).

In male salmonids, 11-ketotestosterone (11KT) is the primary androgen (male sex hormone) (Antonopoulou and Borg 2016). 11KT secretion in testes is induced by Fsh during early spermatogenesis (Maugars and Schmitz 2008a) when it stimulates spermatogonial differentiation with the help of testosterone (T) (Melo et al. 2015). Later in spermiogenesis, the release of 11KT is mediated by Lh instead of Fsh (Maugars and Schmitz 2008a). In addition to spermatogenesis, 11KT is also known to influence secondary male, and also female, sexual characteristics in salmonids (Idler et al. 1961; Kudo et al. 2018). During spermiation, the plasma levels of 11KT and T decline (Baynes and Scott 1985; Planas and Swanson 1995; Sakai et al. 1989) while levels of the main maturation-inducing hormone, Lh-induced $17\alpha,20\beta$ -dihydroxy-4-pregnen-3-one ($17,20P$) increase to finalize sperm maturation (Baynes and Scott 1985; Fitzpatrick et al. 1986; Le Gac and Loir 1988; Planas and Swanson 1995; Sakai et al. 1989; Ueda et al. 1983). $17,20P$ is also suggested to induce sperm motility in the sperm duct (Miura et al. 1992) and be associated with the control of the ionic composition of seminal plasma (Baynes and Scott 1985).

Fish gonads are comprised of both mitotic (males: Sertoli and Leydig cells; females: granulosa cells) as well as meiotic (spermatozoa, ova) cell types that are connected to the endocrine networks regulating maturation. The function of Sertoli cells in males is to support the differentiation of germ cells into functional sperm and phagocytize residual cell bodies (França et al. 2015). In seasonal breeders such as Atlantic salmon, Sertoli cells also phagocytize unejaculated seminal fluid and spermatozoa. The number

and function of Sertoli cells in fish including salmon are dynamic and change as a function of maturation status (França et al. 2015).

The early stages of male maturation involve mitotic proliferation of Sertoli cells, required for increases in undifferentiated spermatogonia (Schulz et al. 2005). Sertoli cell proliferation during maturation is connected to endocrine factors such as estrogens, androgens, progestins, and thyroid hormone (Morais et al. 2013; Schulz et al. 2005). Sertoli cells express key genes that control whether or not male germ cells differentiate, undergo meiosis, and mature into functional sperm (Table 3). Along with Fsh, androgen-regulated Sertoli cell factors Anti-Müllerian hormone, Amh, insulin-like growth factor 3, Igf3 (sometimes also called igf1), and insulin-like 3, Insl3, constitute a core regulatory network that activates the early stages of spermatogenesis before meiosis (spermatogonial phase) (Crespo et al. 2019; Maugars and Schmitz 2008b; Morais et al. 2017; Nóbrega et al. 2015; Sambroni et al. 2013; Schulz et al. 2019; Skaar et al. 2011; Skaftnesmo et al. 2017). Additionally, expression of genes encoding transforming growth factor beta (TGF-beta) factors are associated with maturation in Sertoli cells: *gsdf*, *gonadal soma-derived growth factor*, is downregulated and *inha*, *protein inhibin alpha chain*, upregulated in mature testis (Kleppe et al. 2020)(Table 3).

Early gonadal development in females starts with transformation of primordial germ cells into primary oocytes, after which the oocytes stay quiescent and meiosis is stalled until puberty is reached. Pubertal stages include vitellogenesis (growth) and the completion of meiosis, ending in ovulation (Lubzens et al. 2010). Gene expression changes at different stages of oocyte growth indicate that in addition to Fsh, Amh and Gsdf seem to play a role in regulating the onset of female maturity in coho salmon (Luckenbach et al. 2008). In Atlantic salmon, however, *gsdf* expression has been shown to stay unchanged, but, instead, *inha* is upregulated in granulosa cells of early vitellogenic ovary during puberty (Kleppe et al. 2020)(Table 3).

In female salmonids, Fsh enhances the production of estradiol (E2) (Montserrat et al. 2004; Oppen-Berntsen et al. 1994; Suzuki et al. 1988b), that induces zonagenesis and vitellogenesis (eggshelladiata protein and vitellogenin production, respectively) of maturing oocytes (Celius and Walther 1998; Oppen-Berntsen et al. 1992). When approaching ovulation, the levels of

E2 decrease and, instead, Lh stimulates the production of 17,20P (Suzuki et al. 1988b) to induce the final oocyte maturation and ovulation (Fitzpatrick et al. 1986; Nagahama and Adachi 1985; Nagahama et al. 1983; Scott et al. 1982; Suzuki et al. 1988b; Young et al. 1983).

Molecular factors resulting in variation in maturation

One of the most important molecular processes that controls the timing of maturation is cell fate commitment regulation, the potential for cells to proliferate and differentiate into particular kinds (Plusa and Hadjantonakis 2018). From the maturation perspective, this is a key process as it is linked with decisions related to allocating resources between e.g. growth vs gonadal development (Jonsson and Jonsson 2003). Two key molecular pathways, Hippo and Wnt signaling, are known to be involved in this process. These two pathways interact with each other (Varelas et al. 2010) to regulate body axis patterning and organ size during development by controlling cell proliferation, differentiation and migration, and they are conserved in both vertebrates and invertebrates (Halder and Johnson 2011; Meng et al. 2016; Petersen and Reddien 2009; Teo and Kahn 2010). Studies show that both pathways regulate gonad development in Atlantic salmon (Kjærner-Semb et al. 2018; Skaftnesmo et al. 2017).

In Atlantic salmon post-smolts, downregulation of the Hippo signaling genes *vgll3* and *tead3*, both associated with sea age, and *neurofibromin 2*, *nf2*, is detected in maturing testis compared to that of immature salmon, whereas the same genes are upregulated in regressing testis (Kjærner-Semb et al. 2018)(Table 3). These findings, combined with the localization of *vgll3* expression in testicular Sertoli cells, suggest that Vgll3 and other members of the Hippo signaling pathway may function as inhibitors of Sertoli cell proliferation in immature testis (Kjærner-Semb et al. 2018). Further, differences in *vgll3* transcript expression have been associated with maturation timing in male parr, suggesting that changes in *vgll3* interaction with other transcription factors in the Hippo pathway is at least part of the mechanism translating genetic variation in *vgll3* into different age at maturity phenotypes (Verta et al. 2020). A sex-specific expression pattern is seen in the *vgll3*

paralogs. For example, the sea age-associated paralog on *chm25* is expressed in testis and a second paralog on chromosome 21 is expressed in the ovary (Kurko et al. 2020). In addition to taking part in Sertoli cell proliferation inhibition, is also a central actor in mesenchymal stem cell commitment by inducing chondrocyte and osteocyte differentiation and inhibiting adipocyte maturation as seen in a murine cell line (Halperin et al. 2013). This commitment decision is likely critical to the sexual maturation process of salmon to enable allocation of fat-derived energy for gonad development at the right time. Cell fate commitment regulation by *Vgll3* has been suggested to be conducted via actin cytoskeleton assembly control with assistance from *Akap11* (Kurko et al. 2020), encoded by another gene associated with sea age in Atlantic salmon.

An additional gene associated with maturation, *six6*, encodes a transcription factor that has been shown to regulate maturation of the GnRH neurons and expression of GnRH in the mouse hypothalamus (Larder et al. 2011), as well as transcription of the gonadotropin genes in the gonadotrope cell line in mice (Xie et al. 2015). Its expression has been detected also in the Atlantic salmon brain, including specific expression in the developing pituitary and pineal glands (Moustakas-Verho et al. 2020) and testis (Kurko et al. 2020) and shown to be upregulated in mature parr testis (Guiry et al. 2010), suggesting its importance in the BPG axis of salmon. Genetic variation in *six6* may influence differential timing of the BPG axis activation via the role of *Six6* in regulating neuronal and hormonal development. Moreover, expression of two genes, *slc38a6* and *rtm1*, encoding proteins involved in neuroendocrine secretion in the BPG axis and located in the same genomic region as *six6*, correlates with *six6* expression in several salmon juvenile life history stages (Kurko et al. 2020). This further emphasizes the importance of this genomic region and the BPG axis in the regulation of maturation.

Physiological status and maturation

After embryonic development, Atlantic salmon fry need to initiate feeding as early as possible to allow for adequate lipid storage which affects the timing of maturation (Rowe et al. 1991). In males, there is a positive correlation between storage lipids and

allocation of resources to gonadal development during summer months (Rowe et al. 1991). Fasting during the spring delays maturation because stored lipid reserves are required for maturation the following autumn (Herbinger and Friars 1992; Rowe et al. 1991). If feeding is not sufficient, maturation will be inhibited until the following year (Thorpe 2007).

Leptin has roles in feeding, adiposity, metabolism, and reproduction (Park and Ahima 2015). *Leptin* is thought to affect food intake in many vertebrate taxa and monitor energy reserves to regulate pubertal development in eutherian mammals (Sprent et al. 2012). *Leptin* receptor genes are expressed at low levels in testis of non-maturing male parr during periods of fat accumulation and growth (Trombley et al. 2014). In mature males that have already allocated energy from fat stores to developing gonads, *leptin* is upregulated (Trombley et al. 2014).

Atlantic salmon expend a substantial part of their somatic energy reserves during upstream migration and spawning. For example, the total body lipid content dropped from 11% before upstream migration to less than 2% after spawning (Jonsson et al. 1997). A significant component of this large depletion of lipids goes to gametogenesis and reproductive behavior since feeding is arrested during the return migration (Rowe et al. 1991; Thorpe 1994). During this time, females expend 20–25% of their weight into gonads for egg production, whereas males invest 3–9% of body weight into gonads (Rowe et al. 1991; Thorpe 1994).

Practical applications

Due to the high economic value and significant cultural importance of the species (Houston and Macqueen 2019), we provide an overview of how knowledge of Atlantic salmon maturation may inform conservation and management efforts, commercial and recreational fisheries, and aquaculture.

Conservation of genetic diversity

Life history features of Atlantic salmon such as having a wide diversity in life history strategies and overlapping generations (Chaput et al. 2006; Erkinaro et al. 2019; Hutchings and Jones 1998) can improve the abundance, genetic diversity, and the ability of

populations to adapt to new environmental conditions. The presence of individuals with alternative reproductive strategies in a population also has the potential to reduce inbreeding by increasing the occurrence of matings between individuals from different cohorts. For instance, the contribution of mature male parr to spawning has been shown to increase the genetic diversity of populations and effective population size (N_e), as anadromous females are more likely to be older and from a different cohort than their mature male parr mates (Juanes et al. 2007; Perrier et al. 2014). Jones and Hutchings (2002) estimated the reproductive contributions of mature male parr to moderately increase N_e in a mating experiment with anadromous adults. In wild populations, Perrier et al. (2014) showed a 1.8 fold increase in the effective number of breeders and Saura et al. (2008) a two to three-fold increase in N_e due to mature parr spawning. Perrier et al. (2014) also reported an 11% increase in the number of alleles in progeny due to contributions of mature male parr. They found that relatedness between mature parr and anadromous females was significantly lower than between anadromous adults, suggesting that alternative reproductive strategies may also reduce inbreeding depression at the population level.

Variation in maturation may improve population genetic diversity. For instance, Vähä et al. (2007) reported that the proportion of late maturing (multi-sea winter) females was the best predictor of genetic diversity among four landscape variables and explained $\sim 80\%$ of the observed variation in allelic richness at microsatellite loci in several populations of the Teno River in northern Europe. Life history diversity and overlapping generations may also stabilize variance in genetic diversity (Gaggiotti and Vetter 1999; Vähä et al. 2007) and the abundance of individuals over time via the portfolio effect (see also Anderson et al. 2013; Schindler et al. 2010). Simply stated, the portfolio effect is the diversification of risks, in this case, via diverse life-history strategies, reducing the overall impact of negative effects, e.g. environmental disturbances occurring at particular locations and/or during a limited period of time (Schindler et al. 2015; Tilman et al. 1998). Schindler et al. (2010) also exemplified the commercial significance of life history diversity in sockeye salmon *O. nerka* by calculating that losing population and life

history diversity would result in ten times more frequent fishery closures.

Fisheries management

Understanding maturation processes is central to fisheries as management programs are often based on estimation of the minimum size required for sexual reproduction (Coggins et al. 2007; Erkinaro et al. 2019; Uusi-Heikkilä et al. 2015). This consideration is particularly important as late-maturing salmon are becoming rarer in many wild Atlantic salmon populations (Chaput 2012; Erkinaro et al. 2019).

Fishery management based on body size limits likely select individuals with different maturation strategies within the same population. In salmon, the situation is complicated because individuals are harvested at different life history stages and maturation states. For example, salmon are fished with immature individuals in marine feeding grounds, or with mature or maturing individuals are in coastal waters or in the river. Mixed-stock fisheries may alter the timing of maturation differently in different populations if maturation strategies differ among them. The influence of male parr maturation may also be relevant to fisheries management. For instance, it is estimated that approximately 60% of the adult male salmon production is lost due to male parr maturation in a natural population in southwest Newfoundland (Myers 1984). As a result, fisheries may have different ecological and evolutionary consequences for each population of the mixed stock, unless both the population of origin and the life history composition of each population of the mixed stock are taken into account. Molecular and scale age approaches now enable detailed life history information to be estimated with relatively straightforward approaches (e.g., Johnston et al. 2013, 2014; Vähä et al. 2017). However, the economic loss due to male parr maturation in wild populations remains an open question.

Fishing pressure targeting individuals differently according to their size may play a role in the observed reduction in the frequency of late-maturing Atlantic salmon (Czorlich et al. 2018, 2021). The effect of genetic changes associated with fishing, i.e., fishing-induced evolution (Conover et al. 2005; Reznick and Ghalambor 2005), on salmon sea age may be more difficult to predict and interpret than has been previously assumed based on phenotypic and

ecological data (Kuparinen and Hutchings 2017, 2019). The results of Kuparinen and Hutchings (2017, 2019) and Oomen et al. (2020) demonstrate how the outcomes of size-selective fishing can depend on the genetic architecture behind the trait being selected for, and highlight the unpredictability of the evolutionary outcomes of different fishing strategies.

The timing of the salmon return migration preceding the reproductive season is used to determine the time window of when fishing is permitted in a riverine fishery in northern Finland and Norway (Erkinaro et al. 2019) and also the mixed-stock fishery in the northern Baltic Sea (Suuronen and Jounela 2010). This is because females and large, multi-sea winter, and repeat-spawning salmon tend to return to rivers early in the season (Erkinaro et al. 1997; Jokikokko et al. 2004; Jonsson et al. 1990; Jutila et al. 2003; Miettinen et al. 2021; Niemelä et al. 2006a, b; Quinn et al. 2006; Shearer 1990). Therefore, fishing of individuals returning early in the season may lead to relative over-harvesting of females and later maturing salmon (Erkinaro et al. 2019; Niemelä et al. 2006a). As return migration timing appears to be a highly heritable trait (Stewart et al. 2002), such exploitation may contribute to long-term declines in the abundance of large adult salmon that usually enter rivers early in the season (Quinn et al. 2006). For example, it has been suggested that in some rivers prohibiting fishing in the early season may favor the spawning of multi-sea winter salmon and lead to their proportional increase in the stock (Kallio-Nyberg et al. 2011) and this is being implemented in some systems (Anonymous 2018; Jokikokko and Jutila 2005). Because of these aspects, temporal regulation of fisheries is a valuable tool for protecting maturation-related diversity of salmon stocks.

Restocking

Supplementing natural populations of Atlantic salmon through hatchery restocking programs in a manner that retains biodiversity is challenging (Fraser 2008). Retaining diversity in maturation timing is no exception. Supplementing natural populations of Atlantic salmon through hatchery restocking programs requires thoughtful consideration of maturation. For exploited fish populations to recover from undesired consequences of fishing pressure or other causes of population decline, it is essential that fishing selection has

not eroded population genetic variability in traits such as age at maturity and size (Hard et al., 2008). Knowledge of the *vgll3* locus (Ayllon et al. 2015; Barson et al. 2015) may be used to promote diversity in wild salmon populations and hatchery broodstocks for restocking purposes. Here, targeted assays can rapidly and cost-effectively genotype the genomic region containing the *vgll3* locus in large numbers of fish (Bernatchez et al. 2017; Czorlich et al. 2018). These genotypes may predict the age when stocked adults return to fresh water to spawn, and be used to control the frequency of the late maturation allele in parr and/or smolts that are released into the wild. This approach could help guide breeding programs to produce late maturing individuals of salmon and possibly other exploited fish species if they exhibit similar shifts in the timing of maturation. However, this strategy has the potential to backfire if the environmental conditions selecting against large, late maturing, individuals are not well understood (Kostow 2004). In addition, populations in captive breeding programs may rapidly lose genetic diversity and fitness (reviewed in Fraser 2008). Thus, caution is warranted in applying “gene-targeted” conservation and management planning (Kardos and Shafer 2018; Pearse 2016) by selective breeding and reintroductions of late maturing fish into wild populations.

Recreational angling

Maturation affects size and abundance of Atlantic salmon and the presence of prized large salmon is essential to recreational fisheries to attract anglers (Anderson and Lee 2013; Beardmore et al. 2015). Across the species distribution, recreational fishing is of great economic importance (Myrvoold et al. 2019). A number of country- and river-specific economic assessments support the high economic value of recreational fisheries (e.g., Butler et al. 2009; Gardner 2011; Pohja-Mykrä et al. 2018; Pokki et al. 2018). In total, anglers of wild salmon across the North Atlantic were estimated to spend 300–500 million euros in 2017 in expenditures related to angling (Myrvoold et al. 2019).

The decrease in the frequency of late maturing, large Atlantic salmon in many populations (Chaput 2012) likely impacts recreational fisheries. First, larger adults produce more offspring (Fleming 1998; Mobley et al. 2019, 2020) and are therefore important

for the long-term viability and sustainability of natural salmon populations. Second, the opportunity to catch large salmon is an important draw for recreational fishers, such as tourist anglers who typically prefer larger fish (Anderson and Lee 2013; Beardmore et al. 2015). Because selective harvesting can influence trends in body size and migration timing (Quinn et al. 2006), it is important to carefully consider the sex and age at maturity of salmon harvested by recreational anglers when developing management regulations. The substantial economic benefits provided by regional recreational fisheries may also affect the optimal design of commercial fishing strategies, fishing allocation policies, and international fisheries management of Atlantic salmon stocks on a larger scale (Oinonen et al. 2017). Taken together, efforts to maintain and increase the attractiveness of Atlantic salmon to recreational anglers should take into account variation in age at maturity when selecting optimal fishing strategies and conservation measures aiming to maximize the economic benefits of different fisheries.

Aquaculture

Similar to wild Atlantic salmon populations, aquaculture strains face a trade-off between growth and maturation. However, early maturation in aquaculture is problematic because it decreases size and flesh quality (reviewed in Good and Davidson 2016; Taranger et al. 2010) and represents a large economic loss for the industry (Johnston et al. 2006; McClure et al. 2007). When farmed salmon become sexually mature, their growth rate decreases (Gjerde 1984). This growth decrease occurs because energy stores are primarily used for sexual development (Hendry et al. 1999) and feed consumption is reduced (Kadri et al. 1996) in the period leading up to maturation. For these reasons, fish farms harvest at the onset of maturation (Aksnes et al. 1986; Taranger and Hansen 1993). In aquaculture, timing of maturation is controlled by manipulating environmental parameters such as photoperiod and temperature (Bromage et al. 2001; King and Pankhurst 2007; Mohamed et al. 2019; Pankhurst and Porter 2003). However, these manipulations only partially reduce the problem of early maturation (Taranger et al. 2010) with significant financial losses due to maturation related factors being reported (McClure et al. 2007; Stead et al. 1999). Domesticated

salmon strains exhibited a 3–5 fold decrease in parr maturation probability compared to a wild stock (Debes and Hutchings 2014), suggesting that there is potential for further reduction in this trait via selection, which could potentially be fast-tracked using marker-assisted selection based on the maturation-associated loci described earlier in this synthesis.

Future outlook

Our current understanding of maturation in Atlantic salmon has gained a new perspective due to recent breakthroughs in comprehending the ecological conditions, genetic-based traits, and molecular and physiological processes underlying maturation. Looking toward the future, we provide an overview of research areas that we view as important next steps for maturation research.

Understanding how previous life-history stages affect maturation: the value of technological advances in longitudinal studies

In section Maturation in life history stages, we noted that maturation is a continuous process and that developmental processes initiated during embryonic development may influence maturation. However, we have only fragmented knowledge of how genetics and ecological factors related to specific developmental stages affect maturation during later stages, how these processes interact and/or accumulate during maturation, and how these processes ultimately affect fitness. Progress to date is thanks, in large part, to the ability to monitor maturation of the same individuals at different points in their life-history. For example, longitudinal studies using traditional approaches including common garden studies (Debes et al. 2020; O'Toole et al. 2015; Skaala et al. 2019), tagging (Chaput et al. 2018; Thorpe et al. 1981), inferring life history strategies via scale readings (e.g., Erkinaro et al. 2019; Mobley et al. 2020), or a combination of several of these (Norrgård et al. 2014) have illuminated patterns of maturation in a variety of ecologically relevant settings.

Currently, trade-offs related to the specific methodological approaches limit possibilities to generalize, and often result in a focus on interactions between a limited number of life history stages. For example, common garden studies allow environmental

manipulation, but the environment is generally not reflective of what would be experienced in the wild. Tagging experiments are prone to low sample sizes in later life-history phases due to poor survival and these, but also studies utilizing scale-inferred life-history information, generally have limited scope regarding the specific environmental conditions individuals have experienced, particularly in the poorly understood marine phase.

We view recent and future technological advances in longitudinal studies as playing a pivotal role in linking maturation between different life history stages at the individual level. For example, although cost and size remains prohibitive for use in large numbers and at all life-history stages, satellite tags hold great potential to provide individual-level information about location and environmental conditions in the future (e.g., Strøm et al. 2018). Advances in stable isotope composition analysis can provide more detailed insights into long distance migrations without the need for tagging (Matsubayashi et al. 2020), while decreasing costs for genetic tagging offer opportunities for improving sample sizes via “close-kin mark-recapture” (Bravington et al. 2016). Finally, eDNA techniques may be used to determine kinship, sex ratios, population size, and density, although its application for longitudinal studies at the individual level is unclear based on current practices (Adams et al. 2019; Spear et al. 2020). In the future, studies that incorporate such technological advances should help to reveal how genetic and environmental factors influence maturation over an individual’s lifetime.

Ecological factors affecting maturation: linking life history phases and reproductive fitness

The majority of studies that experimentally test how ecological factors affect maturation have focused on the freshwater phase (Table 1). This is mostly due to practical reasons associated with capturing, rearing, and tracking individuals. Juveniles can be electrofished from streams in high abundance compared to seafaring post-smolts and adults, embryos and parr are much smaller than their post-smolt counterparts and thus do not require as extensive facilities for rearing and monitoring, and mature male parr can be reared within one year. Such studies have provided a wealth of information on the ecological factors affecting maturation during early life stages.

However, knowledge gaps remain concerning later life history stages. For example, gaining a better understanding of ecological factors affecting the less understood female maturation process is particularly important since reproduction is ultimately dependent upon female fecundity (Fleming 1996, 1998; Heinimaa and Heinimaa 2004). A second limitation of the focus on pre-marine migration maturation is that other critical maturation time points, such as the ecological factors that affect maturation during the marine phase, are not well understood.

In the marine phase, factors influencing maturation timing and return migration are partially genetically determined, yet growth and diet still play a role. A better understanding of maturation triggers at sea remain partially obscured by the difficulty of tracking individuals on their return migration from feeding grounds. This could be overcome by combining long-term climate and prey species data along with monitoring of salmon at sea with genetic and diet studies at different times of the year. For example, focusing on the return migrating salmon during the summer and fall may help to understand the physiological changes linked with maturation during these periods.

How maturation at different life history stages influences fitness is not well understood. This can be solved by long-term pedigree studies, breeding experiments and modeling approaches aimed at understanding the ecological factors and underlying genetics of reproductive fitness (e.g., McGinnity et al. 2003; Mobley et al. 2020; O’Sullivan et al. 2019). For example, noting the strong effect of incubation temperature on the growth and timing of the return migration, how incubation temperature affects the reproduction and survivorship of the F1 generation is still unknown. This could be important for adaptation in the face of climate change.

There are also new opportunities for understanding ecological factors linked with maturation thanks to the recent advances in understanding the genetic basis of maturation strategies. Large-effect maturation loci, such as *vgll3*, can be used as ‘markers’ of the likely future life history strategy of individuals already during the earliest developmental stages. Thus integrating genetic information with ecological data may help to disentangle differences in maturation strategies during different life history stages.

Genetics of maturation: functional validation of genes associated with maturation

Functional validation of genes in candidate regions associated with maturation is a logical next step to confirm their role in Atlantic salmon maturation. Validation should include *in vitro* (cell line), *in vivo* (tissue, whole organism) and *in silico* (computational modelling) studies during different developmental life history stages to further our understanding of the roles of these genes. Some achievements have already been accomplished, for example, in functional studies of *vgll3*, *akap11* and *six6* (Kjærner-Semb et al. 2018; Kurko et al. 2020; Moustakas-Verho et al. 2020; Verta et al. 2020), but more research is required to fully understand the molecular roles of these genes, as well as genes they interact with, in the maturation process.

Further research on gene expression at both transcriptional (mRNA) and translational (protein) level, as well as on epigenetic modifications, will be necessary to determine the potentially complex molecular pathways that candidate genes with different genotypes take part in, ultimately leading to phenotypic variation directly in maturation or maturation-related processes. Molecular functions of target genes can be studied in a detailed manner at the cellular level by examining, for example, mRNA expression by single-cell qPCR and RNAseq or cellular location of mRNA and protein using *in situ* hybridization and antigen labelling techniques, respectively. Further, techniques to study protein–protein interactions can reveal novel information on potential binding partners of candidate genes. In the case of *vgll3* and *six6* encoding transcription factors, chromatin immunoprecipitation assay (ChIP-Seq) would provide relevant knowledge about the transcriptional targets of these proteins. Additionally, reporter assays enabling studying promoter activity could shed light on whether noncoding regions with SNPs associated with sea age [e.g., the noncoding region between *vgll3* and *akap11*, (Barson et al. 2015)] are regulatory and whether genetic variation in these regions affects regulation of the target gene expression.

An exciting new way to study the functional importance of candidate genes is to use genome editing techniques. CRISPR-Cas9 technology is being increasingly used to knock-out or edit genes, whereas RNA interference (RNAi) can be used to knock down

expression at the organismal or cellular level to examine the effect on the phenotype and downstream molecular pathways. The CRISPR-Cas9 technique has already been successfully implemented in Atlantic salmon (Datsomor et al. 2019). Gene editing by the CRISPR-Cas9 system would allow for converting a certain genotype to another. For example, modifying a *vgll3 EE* genotype into an *LL* genotype and *vice-versa* in a fertilized egg would demonstrate if an artificial *vgll3* genotype has the same influence on phenotypic variation as a natural *vgll3* genotype. Provided appropriate experimental and ethical safeguards are in place, experiments such as this would allow a deeper understanding of the regulatory pathways controlling maturation.

Maturation candidate genes identified via QTL and genetic studies differ across studies. Determining the reasons why these differences are observed is key for understanding the genetic architecture of Atlantic salmon maturation. Lack of power in some studies may have given rise to such differences. However, it remains unknown whether these differences could instead be a result of differences in the effect of these genes among populations or lineages. Future work on identifying candidate genes should aim to survey a wide range of populations representing all lineages of Atlantic salmon. Additionally, examining population-specific gene-by-environment effects may help to elucidate whether differences in gene effects may occur due to differences in life history traits and ecological factors experienced in different populations. Furthermore, sex-dependent dominance at the *vgll3* was observed in European wild populations (Barson et al. 2015), but no dominance pattern was observed in males from a Norwegian aquaculture strain (Sinclair-Waters et al. 2020). This raises the question whether sex-dependent dominance at the *vgll3* locus exists in all populations and if there are specific conditions in the wild that give rise to this dominance effect (e.g. limited food availability). Lastly, future work should investigate whether sex-specific maturation gene effects exist.

Molecular and physiological mechanisms of maturation: incorporating a greater diversity of life history stages and molecular approaches

Beyond the functional validation of genes associated with maturation is the need for a systemic approach

that integrates molecular and physiological communication across the organism. The function of each part of the BPG axis is well known with regards to maturation and its timing in salmonids. Still obscure is the causality between activation of the BPG axis and initiation of the maturation process, and whether inter-individual variation in the elements of the BPG axis can explain variation in maturation.

Currently, it is unclear how genetic variation in life history genomic regions interacts with the BPG axis, though it is likely that *six6* is involved in neuronal development and hormonal regulation of this axis, as suggested by its expression in Atlantic salmon (Kurko et al. 2020; Moustakas-Verho et al. 2020). Genetic variation in *six6* (Barson et al. 2015; Sinclair-Waters et al. 2020) and other genomic regions may explain differences in the timing of BPG axis activation, and, therefore, maturation. The molecular role of *six6* and the link between its genetic variation and functional outcome in the BPG axis should be examined in more detail in salmon. Future studies need to address the evolution of the BPG axis in populations with known genetic backgrounds and maturation status.

How ecological factors, such as changes in photoperiod, temperature, salinity, interspecific competition, and diet, affect gene expression, hormonal regulation, and lipid metabolism have been extensively studied with respect to maturation. Future research would benefit not only from the addition of genetic background information and population structure, but also from more extensive application of “big data” approaches such as metabolomics and lipidomics (broad-scale analyses of hundreds or thousands of metabolites and lipid species, respectively) to provide a broader profile of the molecules involved in the maturation process as well as their associations and interactions.

Climate change and other anthropogenic issues affecting maturation: can salmon adapt?

Given the close relationship of salmon maturation with several environmental factors including temperature, it is no surprise that range-wide rapid decline in salmon stocks has been linked to global climate change (Lehnert et al. 2019; Mills et al. 2013). In particular, declines of large, later maturing individuals of up to 88% have been observed in regions across the Atlantic salmon range (Chaput 2012). How well

Atlantic salmon can adapt to a changing climate may be limited, in part, by the species’ evolutionary response to selection (Radchuk et al. 2019). Therefore, a major goal of future research should be to investigate how predicted increases in temperature will affect the timing of maturation, reproductive fitness of different life history strategies, and the long-term persistence of natural salmon populations (Cline et al. 2019; Hedger et al. 2013; Sundt-Hansen et al. 2018). This will require better knowledge of how temperature at different stages of life history (e.g., freshwater vs. marine phases) influences maturation trajectories, as well as how temperature interacts with genetic factors (Debes et al. 2020).

Climate change can also be expected to have a number of indirect effects of significance for salmon maturation. For example, altered climatic conditions in the marine environment, either directly due to temperature increase, or altered oceanic current patterns, may affect the abundance and distribution of key prey species of salmon (Todd et al. 2008). This can have knock-on effects altering growth and adiposity, and thereby, maturation. Such changes can be predicted to affect alternative life history strategies differently. For example, the negative effects of reduced marine prey abundance may be greater for individuals spending multiple years at sea before reproduction (Czorlich et al. 2018). In the event of reduced rainfall, decreased river flow can decrease oxygen saturation levels, which in turn can affect metabolism, feeding rates, and growth rates (Hosfeld et al. 2008) thereby affecting maturation. Decreased water flow can also decrease the ability of large, late-maturing, individuals to reach spawning areas that were previously accessible in higher flow conditions.

Besides climate change, a variety of pernicious anthropogenic threats may influence salmon maturation in unpredictable ways. Pollution from industrial waste and pharmaceuticals, particularly those that alter behavior (Klaminder et al. 2019) or interfere with normal hormonal regulation such as endocrine disrupting compounds, may alter development and maturation (Björnsson et al. 2011; Duffy et al. 2014; McCormick et al. 2005). More generally, any anthropogenic factor that can affect growth or survival has the potential to alter maturation trajectories of individuals.

Fishing and aquaculture: potential benefits of utilizing recent discoveries

The long-term success of fisheries is highly dependent on the potential of fish stocks to adapt to changing environments. However, how salmon respond to selection has rarely been considered in fishing policies (Hard et al. 2008). This may change in the future as we gain a better understanding of the ecological and genetic factors influencing maturation in Atlantic salmon (Barson et al. 2015; Czorlich et al. 2018; Sinclair-Waters et al. 2020).

Knowledge of the genetic control of the timing of maturation is critical for understanding and predicting the evolutionary impact of fishing (Kuparinen and Hutchings 2017; Kuparinen and Merilä 2007). Monitoring population allele frequency changes over time on known maturation genes will help to elucidate how maturation timing may change under different kinds of harvesting pressure. For instance, the timing and locality of fishing, and gear used, may select for individuals with differing maturation strategies. Current models predicting the effects of fishing on maturation have considered a polygenic genetic architecture (i.e., many small-effect genes) and a single large-effect locus without sexual selection (Kuparinen and Hutchings 2017). Future models should aim to incorporate knowledge of estimated effect sizes for known candidate genes. Additionally, one should consider how linkage disequilibrium patterns within the genome may modify the effects that fishing has on maturation (see Oomen et al. 2020). Thus, integrating new information of maturation genes will help inform management strategies aimed at maintaining variability in the timing of maturation in salmon populations.

Knowledge of maturation genes has potential value for selection aimed at optimizing the timing of maturation in aquaculture strains. For example, new genetic knowledge could help reduce the frequency of mature male parr via marker-assisted selection, and thus decrease the amount of resources and individuals with undesirable maturation strategies. In addition, understanding how maturation is genetically correlated with other traits can help define limits of artificial selection on the timing of maturation.

Conclusions and recommendations

The ever-increasing research on Atlantic salmon maturation consolidates the species as a tractable vertebrate model system for studying various aspects of maturation (Chakradhar 2018). Our goal for this synthesis is to provide a current overview of research on maturation in Atlantic salmon with the express purpose to identify major themes where information is lacking and thus highlight potential areas for future research. Here, we proffer our major conclusions and recommendations for the field as it moves forward.

1. *Maturation occurs throughout the life cycle, starting from embryonic development and throughout each distinct life history stage.* However, our knowledge of maturation during some life history stages is incomplete. For example, ecological investigations mostly focus on freshwater life-history stages, whereas less is known about maturation in the marine phase. In contrast, few genomic studies investigating maturation-related traits have been conducted on early embryonic and juvenile phenotypic traits of importance during the freshwater phase. Moreover, gene expression studies overwhelmingly focus on maturation in male parr, whereas much less is known concerning gene expression patterns prior to the return migration and in maturing females. Finally, we still lack basic knowledge concerning how ecological and genetic factors influence embryonic development. Future research should address these gaps in our knowledge in order to identify critical developmental time points and life history phases that are key to maturation in this species.
2. *Variation in the timing of maturation promotes diversity in life history strategies.* We now have an understanding that the timing of maturation during different life history phases drives the exceptionally high life history diversity within this species. However, many questions remain. For example, what is the genetic architecture of male parr maturation and iteroparity? How does development in one life history phase affect maturation in later stages? What are the relative fitnesses of different life history strategies in different environments? A combination of common garden experiments, wild pedigrees, longitudinal studies,

and modeling approaches may help to answer these questions in the future.

3. *Ecological and genetic factors influence maturation.* A range of ecological factors, most notably temperature and photoperiod, affect maturation at different life history stages while several genetic factors including large-effect loci influence maturation during the marine phase. However, research on these factors is not yet sufficiently integrated. For example, although there is considerable knowledge of i) how ecological factors influence maturation and ii) the molecular processes of maturation, our understanding of how i) affects ii) and vice versa is more limited. Studies that combine ecological and molecular approaches, e.g., common garden experiments, may help to disentangle the relative contributions of each of these factors to the maturation process.
4. *Maturation processes are sex-specific and may have fitness consequences for each sex.* Males and females mature at different ages and have different physiological and metabolic requirements for reproduction. These differences in the timing of maturation between the sexes may start as early as embryonic development and drive intra-locus sexual conflict at large-effect loci related to maturation. Moreover, the maintenance of alternative mating strategies and the relative contribution of male mature parr to reproductive fitness is not well understood in nature. Future studies investigating differences between the sexes in traits and gene expression patterns and how these differences translate into reproductive fitness during different life stages and alternative reproductive strategies will help to illuminate sex-specific maturation processes.
5. *Molecular and physiological maturation pathways are affected by large-effect loci.* Maturation during the marine phase is affected by large-effect loci suggesting a relatively simple genetic architecture, yet the details of how this is achieved are not well understood. Future research should take advantage of this simplified genetic architecture to identify the causal genes within the identified large-effect genomic regions associated with maturation and identify the role(s) of these genes using functional validation techniques.
6. *The brain-pituitary–gonadal axis is a central player that regulates molecular and physiological processes of maturation in Atlantic salmon.* While we are beginning to unravel the intricacies of the BPG axis, it is unclear how variation in large-effect loci controlling maturation processes and ecological factors interacts with the BPG axis. In addition, how downstream physiological and metabolic processes, such as lipid metabolism and storage, are regulated by the BPG axis in salmon are not well understood. Future research should focus on feedback between external ecological factors, the genetic architecture, and the internal physiological processes to better understand how maturation occurs at the molecular level.
7. *Knowledge of maturation is a key component of conservation and management programs in many populations and stocks.* Variation in maturation timing has positive consequences for population genetic diversity. Therefore the preservation of phenotypic variation linked with maturation should increase the adaptive potential of populations. Moreover, genetic markers linked to large-effect maturation loci offer new avenues to further develop management and conservation tools for preserving variation in life history strategies.
8. *Climate change, fishing pressure, and other anthropogenic stressors likely have major effects on salmon maturation.* Due to their direct and indirect effects on growth and survival, various anthropogenic factors have been shown to have significant effects on maturation trajectories. Such knowledge can improve predictions concerning how populations may respond to different harvest regimes or fishing restrictions. However, considering the combined effects of harvesting and other anthropogenic factors on life-history diversity, as well as incorporating knowledge of maturation trait genetic architecture into forecasts, has rarely been achieved. This would be an ambitious, yet worthy, goal for future population management.

Acknowledgements We would like to thank Cano Arias for salmon images and Jaakko Erkinaro and the Natural Resources Institute Finland (Luke) for the scale image. We would also like to thank J. Hutchings, C. Bouchard, and three anonymous reviewers for their constructive comments on previous manuscript versions. The research group received funding from the European Research Council (ERC) under the European Union’s Horizon 2020 research and innovation programme (Grant agreement No. 742312), from the Academy of Finland

Grants 307593, 302873 and 284941 and from the University of Helsinki.

Author contributions K.B.M. initiated the review and all authors drafted the manuscript.

Funding Open access funding provided by University of Helsinki including Helsinki University Central Hospital.

Declarations

Conflict of interest The authors declare no conflict of interest.

Open Access This article is licensed under a Creative Commons Attribution 4.0 International License, which permits use, sharing, adaptation, distribution and reproduction in any medium or format, as long as you give appropriate credit to the original author(s) and the source, provide a link to the Creative Commons licence, and indicate if changes were made. The images or other third party material in this article are included in the article's Creative Commons licence, unless indicated otherwise in a credit line to the material. If material is not included in the article's Creative Commons licence and your intended use is not permitted by statutory regulation or exceeds the permitted use, you will need to obtain permission directly from the copyright holder. To view a copy of this licence, visit <http://creativecommons.org/licenses/by/4.0/>.

References

- Adams CE, Thorpe JE (1989) Photoperiod and temperature effects on early development and reproductive investment in Atlantic salmon (*Salmo salar* *Salmo salar* L.). *Aquaculture* 79:403–409. [https://doi.org/10.1016/0044-8486\(89\)90483-3](https://doi.org/10.1016/0044-8486(89)90483-3)
- Adams CI, Knapp M, Gemmill NJ, Jeunen G-J, Bunce M, Lamare MD, Taylor HR (2019) Beyond biodiversity: can Environmental DNA (eDNA) cut it as a population genetics tool? *Genes* 10:192. <https://doi.org/10.3390/genes10030192>
- Aksnes A, Gjerde B, Roald SO (1986) Biological, chemical and organoleptic changes during maturation of farmed Atlantic salmon. *Salmo salar*. *Aquacult* 53:7–20. [https://doi.org/10.1016/0044-8486\(86\)90295-4](https://doi.org/10.1016/0044-8486(86)90295-4)
- Amano M, Urano A, Aida K (1997) Distribution and function of gonadotropin-releasing hormone (GnRH) in the teleost brain. *Zoolog Sci* 14:1–11. <https://doi.org/10.2108/zsj.14.1>
- Anderson LE, Lee ST (2013) Untangling the recreational value of wild and hatchery salmon. *Mar Resour Econ* 28:175–197. <https://doi.org/10.5950/0738-1360-28.2.175>
- Anderson SC, Cooper AB, Dulvy NK (2013) Ecological prophets: quantifying metapopulation portfolio effects. *Methods Ecol Evol* 4:971–981. <https://doi.org/10.1111/2041-210X.12093>
- Andersson E et al (2013) Pituitary gonadotropin and ovarian gonadotropin receptor transcript levels: seasonal and photoperiod-induced changes in the reproductive physiology of female Atlantic salmon (*Salmo salar*). *Gen Comp Endocrinol* 191:247–258. <https://doi.org/10.1016/j.ygcen.2013.07.001>
- Anonymous (2018) Status of the Tana/Teno River salmon populations in 2017. Report from the Tana Monitoring and Research Group nr 1/2018. <https://www.luke.fi/wp-content/uploads/2018/03/Tana-status-report-1-2018-final.pdf>
- Antonopoulou E, Borg B (2016) The brain-pituitary-gonad axis in the Atlantic salmon. In: Petersson E (ed) Vladić TV Evolutionary biology of the Atlantic Salmon. CRC Press, Boca Raton, pp 108–123
- Armstrong JD, McKelvey S, Smith GW, Rycroft P, Fryer RJ (2018) Effects of individual variation in length, condition and run-time on return rates of wild-reared Atlantic salmon *Salmo salar* smolts. *J Fish Biol* 92:569–578. <https://doi.org/10.1111/jfb.13548>
- Aubin-Horth N, Dodson JJ (2004) Influence of individual body size and variable thresholds on the incidence of a sneaker male reproductive tactic in Atlantic salmon. *Evolution* 58:136–144. <https://doi.org/10.1111/j.0014-3820.2004.tb01580.x>
- Aubin-Horth N, Landry CR, Letcher BH, Hofmann HA (2005) Alternative life histories shape brain gene expression profiles in males of the same population. *Proc Biol Sci* 272:1655–1662. <https://doi.org/10.1098/rspb.2005.3125>
- Aubin-Horth N, Letcher BH, Hofmann HA (2009) Gene-expression signatures of Atlantic salmon's plastic life cycle. *Gen Comp Endocrinol* 163:278–284. <https://doi.org/10.1016/j.ygcen.2009.04.021>
- Auld HL, Noakes DLG, Banks MA (2019) Advancing mate choice studies in salmonids. *Rev Fish Biol Fish.* <https://doi.org/10.1007/s11160-019-09551-5>
- Aykanat T et al (2020) Life history genomic regions explain differences in Atlantic salmon marine diet specialization. *J Anim Ecol* 89:2677–2691. <https://doi.org/10.1111/1365-2656.13324>
- Aykanat T, Ozerov M, Vähä J-P, Orell P, Niemelä E, Erkinaro J, Primmer CR (2019) Co-inheritance of sea age at maturity and iteroparity in the Atlantic salmon *vgll3* genomic region. *J Evol Biol* 32:343–355. <https://doi.org/10.1111/jeb.13418>
- Ayllon F et al (2015) The *vgll3* locus controls age at maturity in wild and domesticated Atlantic salmon (*Salmo salar* L.) males. *PLOS Genet* 11:e1005628. <https://doi.org/10.1371/journal.pgen.1005628>
- Ayllon F et al (2019) The influence of *vgll3* genotypes on sea age at maturity is altered in farmed mowi strain Atlantic salmon. *BMC Genet* 20:44–44. <https://doi.org/10.1186/s12863-019-0745-9>
- Bacles CFE, Bouchard C, Lange F, Manicki A, Tentelier C, Lepais O (2018) Estimating the effective number of breeders from single parr samples for conservation monitoring of wild populations of Atlantic salmon *Salmo salar*. *J Fish Biol* 92:699–726. <https://doi.org/10.1111/jfb.13537>
- Bacon PJ, Malcolm IA, Fryer RJ, Glover RS, Millar CP, Youngson AF (2015) Can conservation stocking enhance juvenile emigrant production in wild Atlantic salmon? *Trans Am Fish Soc* 144:642–654. <https://doi.org/10.1080/00028487.2015.1017655>
- Bagliniere JL, Maisse G (1985) Precocious maturation and smoltification in wild Atlantic salmon in the Armorican

- massif. France *Aquacult* 45:249–263. [https://doi.org/10.1016/0044-8486\(85\)90274-1](https://doi.org/10.1016/0044-8486(85)90274-1)
- Balment RJ, Lu W, Weybourne E, Warne JM (2006) Arginine vasotocin a key hormone in fish physiology and behaviour: a review with insights from mammalian models. *Gen Comp Endocrinol* 147:9–16. <https://doi.org/10.1016/j.ygcen.2005.12.022>
- Barson NJ et al (2015) Sex-dependent dominance at a single locus maintains variation in age at maturity in salmon. *Nature* 528:405. <https://doi.org/10.1038/nature16062>
- Baum D, Laughton R, Armstrong JD, Metcalfe NB (2005) The effect of temperature on growth and early maturation in a wild population of Atlantic salmon parr. *J Fish Biol* 67:1370–1380. <https://doi.org/10.1111/j.0022-1112.2005.00832.x>
- Baynes SM, Scott AP (1985) Seasonal variations in parameters of milt production and in plasma concentration of sex steroids of male rainbow trout (*Salmo gairdneri*). *Gen Comp Endocrinol* 57:150–160. [https://doi.org/10.1016/0016-6480\(85\)90211-4](https://doi.org/10.1016/0016-6480(85)90211-4)
- Beardmore B, Hunt LM, Haider W, Dorow M, Arlinghaus R (2015) Effectively managing angler satisfaction in recreational fisheries requires understanding the fish species and the anglers. *Can J Fish Aquat Sci* 72:500–513. <https://doi.org/10.1139/cjfas-2014-0177>
- Benedet S, Björnsson BT, Taranger GL, Andersson E (2008) Cloning of somatolactin alpha, beta forms and the somatolactin receptor in Atlantic salmon: seasonal expression profile in pituitary and ovary of maturing female broodstock. *Reprod Biol Endocrinol RB&E* 6:42. <https://doi.org/10.1186/1477-7827-6-42>
- Benedet S, Andersson E, Mittelholzer C, Taranger GL, Björnsson BT (2010) Pituitary and plasma growth hormone dynamics during sexual maturation of female Atlantic salmon. *Gen Comp Endocrinol* 167:77–85. <https://doi.org/10.1016/j.ygcen.2010.02.011>
- Bentley JW, Serpetti N, Heymans JJ (2017) Investigating the potential impacts of ocean warming on the Norwegian and Barents Seas ecosystem using a time-dynamic food-web model. *Ecol Model* 360:94–107. <https://doi.org/10.1016/j.ecolmodel.2017.07.002>
- Bernardo J (1993) Determinants of maturation in animals. *Trends Ecol Evol* 8:166–173. [https://doi.org/10.1016/0169-5347\(93\)90142-C](https://doi.org/10.1016/0169-5347(93)90142-C)
- Bernatchez L et al (2017) Harnessing the power of genomics to secure the future of seafood. *Trends Ecol Evol* 32:665–680. <https://doi.org/10.1016/j.tree.2017.06.010>
- Björnsson BT, Stefansson SO, McCormick SD (2011) Environmental endocrinology of salmon smoltification. *Gen Comp Endocrinol* 170:290–298. <https://doi.org/10.1016/j.ygcen.2010.07.003>
- Boulding EG, Ang KP, Elliott JAK, Powell F, Schaeffer LR (2019) Differences in genetic architecture between continents at a major locus previously associated with sea age at sexual maturity in European Atlantic salmon. *Aquaculture* 500:670–678. <https://doi.org/10.1016/j.aquaculture.2018.09.025>
- Brännäs E (1995) First access to territorial space and exposure to strong predation pressure: A conflict in early emerging Atlantic salmon (*Salmo salar* L.) fry. *Evol Ecol* 9:411–420. <https://doi.org/10.1007/BF01237763>
- Bravington MV, Grewe PM, Davies CR (2016) Absolute abundance of southern bluefin tuna estimated by close-kin mark-recapture. *Nat Commun* 7:13162. <https://doi.org/10.1038/ncomms13162>
- Breton B, Govoroun M, Mikolajczyk T (1998) GTH I and GTH II secretion profiles during the reproductive cycle in female rainbow trout: relationship with pituitary responsiveness to GnRH-A stimulation. *Gen Comp Endocrinol* 111:38–50. <https://doi.org/10.1006/gcen.1998.7088>
- Bromage N, Porter M, Randall C (2001) The environmental regulation of maturation in farmed finfish with special reference to the role of photoperiod and melatonin. *Aquaculture* 197:63–98. [https://doi.org/10.1016/S0044-8486\(01\)00583-X](https://doi.org/10.1016/S0044-8486(01)00583-X)
- Burgerhout E, Mommens M, Johnsen H, Aunsmo A, Santi N, Andersen Ø (2017) Genetic background and embryonic temperature affect DNA methylation and expression of myogenin and muscle development in Atlantic salmon (*Salmo salar*). *PLoS ONE* 12:e0179918. <https://doi.org/10.1371/journal.pone.0179918>
- Butler JRA, Radford A, Riddington G, Laughton R (2009) Evaluating an ecosystem service provided by Atlantic salmon, sea trout and other fish species in the River Spey, Scotland: the economic impact of recreational rod fisheries. *Fish Res* 96:259–266. <https://doi.org/10.1016/j.fishres.2008.12.006>
- COSEWIC (2010) COSEWIC assessment and status report on the Atlantic Salmon *Salmo salar* (Nunavik population, Labrador population, Northeast Newfoundland population, South Newfoundland population, Southwest Newfoundland population, Northwest Newfoundland population, Quebec Eastern North Shore population, Quebec Western North Shore population, Anticosti Island population, Inner St. Lawrence population, Lake Ontario population, Gaspé-Southern Gulf of St. Lawrence population, Eastern Cape Breton population, Nova Scotia Southern Upland population, Inner Bay of Fundy population, Outer Bay of Fundy population) in Canada. Ottawa. Ottawa. pp xvii - 136. <https://www.canada.ca/en/environment-climate-change/services/species-risk-publicregistry/cosewic-assessments-status-reports/atlantic-salmon.html>
- Cánovas A et al (2014) Multi-tissue omics analyses reveal molecular regulatory networks for puberty in composite beef cattle. *PLoS ONE* 9:1–17. <https://doi.org/10.1371/journal.pone.0102551>
- Cauwelier E, Gilbey J, Sampayo J, Stradmeyer L, Middlemas SJ (2018) Identification of a single genomic region associated with seasonal river return timing in adult Scottish Atlantic salmon (*Salmo salar*) identified using a genome-wide association study. *Canadian J Fish Aquatic Sci* 75:1427–1435. <https://doi.org/10.1139/cjfas-2017-0293>
- Celius T, Walther BT (1998) Oogenesis in Atlantic salmon (*Salmo salar* L.) occurs by zonagenesis preceding vitellogenesis in vivo and in vitro. *J Endocrinol* 158:259–266. <https://doi.org/10.1677/joe.0.1580259>
- Chakradhar S (2018) Animals on the verge: What different species can teach us about human puberty. *Nat Med* 24:114–117. <https://doi.org/10.1038/nm0218-114>
- Chaput G (2012) Overview of the status of Atlantic salmon (*Salmo salar*) in the North Atlantic and trends in marine

- mortality ICES. *J Mar Sci* 69:1538–1548. <https://doi.org/10.1093/icesjms/fss013>
- Chaput G, Caron F, Marshall L (2003) Estimates of survival of Atlantic salmon (*Salmo salar* L.) in the first and second years at sea. In: Potter ECE, Ó Maoiléidigh N, Chaput G, editors. Marine mortality of Atlantic salmon, *Salmo salar* L: methods and measures. DFO Can Sci Advis Sec Res Doc 2003/101, pp 83–109
- Chaput G, Dempson JB, Caron F, Jones R, Gibson J (2006) A synthesis of life history characteristics and stock grouping of Atlantic salmon (*Salmo salar* L.) in eastern Canada. DFO Can Sci Advis Sec Res Doc 2006/015, p 53
- Chaput G, Carr J, Daniels J, Tinker S, Jonsen I, Whoriskey F (2018) Atlantic salmon (*Salmo salar*) smolt and early post-smolt migration and survival inferred from multi-year and multi-stock acoustic telemetry studies in the Gulf of St Lawrence, northwest Atlantic ICES. *J Mar Sci* 76:1107–1121. <https://doi.org/10.1093/icesjms/fsy156> *JICESJournalofMarineScience*
- Chi L, Li X, Liu Q, Liu Y (2017) Photoperiod regulate gonad development via kisspeptin/kissr in hypothalamus and saccus vasculosus of Atlantic salmon (*Salmo salar*). *PLOS ONE* 12:e0169569. <https://doi.org/10.1371/journal.pone.0169569>
- Chi L, Li X, Liu Q, Liu Y (2019) Photoperiod may regulate growth via leptin receptor A1 in the hypothalamus and saccus vasculosus of Atlantic salmon (*Salmo salar*). *Animal Cells Syst* 23:200–208. <https://doi.org/10.1080/19768354.2019.1595138>
- Choi YJ, Kim NN, Shin HS, Choi CY (2014) The expression of leptin, estrogen receptors, and vitellogenin mRNAs in migrating female Chum salmon, *Oncorhynchus keta*: the effects of hypo-osmotic environmental changes. *Asian-Australasian J Animal Sci* 27:479–487. <https://doi.org/10.5713/ajas.2013.13592>
- Chou MY, Hung JC, Wu LC, Hwang SP, Hwang PP (2011) Isotocin controls ion regulation through regulating ionocyte progenitor differentiation and proliferation. *Cell Mol Life Sci* 68:2797–2809. <https://doi.org/10.1007/s00018-010-0593-2>
- Christensen KA, Gutierrez AP, Lubieniecki KP, Davidson WS (2017) TEAD3, implicated by association to grilising in Atlantic salmon. *Aquaculture* 479:571–578. <https://doi.org/10.1016/j.aquaculture.2017.06.026>
- Ciani E et al (2020) GnRH receptor *gnrhr2bbx* is expressed exclusively in *lhb*-expressing cells in Atlantic salmon male parr. *General and Comparative. Endocrinology* 285:113293. <https://doi.org/10.1016/j.ygcen.2019.113293>
- Cline TJ, Ohlberger J, Schindler DE (2019) Effects of warming climate and competition in the ocean for life-histories of Pacific salmon. *Nat Ecol Evol* 3:935–942. <https://doi.org/10.1038/s41559-019-0901-7>
- Coggins LG, Catalano MJ, Allen MS, Pine WE, Walters CJ (2007) Effects of cryptic mortality and the hidden costs of using length limits in fishery management. *Fish Fish* 8:196–210. <https://doi.org/10.1111/j.1467-2679.2007.00247.x>
- Connallon T, Clark AG (2014) Balancing selection in species with separate sexes: insights from Fisher's geometric model. *Genetics* 197:991–1006. <https://doi.org/10.1534/genetics.114.165605>
- Conover DO, Arnott SA, Walsh MR, Munch SB (2005) Darwinian fishery science: lessons from the Atlantic silverside (*Menidia menidia*). *Canadian J Fish Aquat Sci* 62:730–737. <https://doi.org/10.1139/f05-069>
- Consuegra S, De Leániz CG, Serdio A, Verspoor E (2005) Selective exploitation of early running fish may induce genetic and phenotypic changes in Atlantic salmon. *J Fish Biol* 67:129–145. <https://doi.org/10.1111/j.0022-1112.2005.00844.x>
- Cousminer DL et al (2013) Genome-wide association and longitudinal analyses reveal genetic loci linking pubertal height growth, pubertal timing and childhood adiposity. *Human Mol Genet* 22:2735–2747. <https://doi.org/10.1093/hmg/ddt104>
- Crespo D et al (2019) The initiation of puberty in Atlantic salmon brings about large changes in testicular gene expression that are modulated by the energy status. *BMC Genomics* 20:475. <https://doi.org/10.1186/s12864-019-5869-9>
- Crisp DT, Carling PA (1989) Observations on siting, dimensions and structure of salmonid redds. *J Fish Biol* 34:119–134. <https://doi.org/10.1111/j.1095-8649.1989.tb02962.x>
- Czorlich Y, Aykanat T, Erkinaro J, Orell P, Primmer CR (2018) Rapid sex-specific evolution of age at maturity is shaped by genetic architecture in Atlantic salmon. *Nat Ecol Evol* 2:1800–1807. <https://doi.org/10.1038/s41559-018-0681-5>
- Czorlich Y, Aykanat T, Erkinaro J, Orell P, Primmer CR (2021) Evolution in salmon life-history induced by direct and indirect effects of fishing. <https://doi.org/10.1101/2021.01.08.425869>
- Damsgård B, Evensen Tor H, Øverli Ø, Gorissen M, Ebbesson Lars OE, Rey S, Höglund E (2019) Proactive avoidance behaviour and pace-of-life syndrome in Atlantic salmon. *R Soc Open Sci* 6:181859. <https://doi.org/10.1098/rsos.181859>
- Datsomor AK et al (2019) CRISPR/Cas9-mediated ablation of *elovl2* in Atlantic salmon (*Salmo salar* L) inhibits elongation of polyunsaturated fatty acids and induces *Srebp-1* and target genes. *Sci Rep* 9:7533. <https://doi.org/10.1038/s41598-019-43862-8>
- Daufresne M, Lengfellner K, Sommer U (2009) Global warming benefits the small in aquatic ecosystems. *Proc Natl Acad Sci USA* 106:12788–12793. <https://doi.org/10.1073/pnas.0902080106>
- Debes PV et al (2019) Large single-locus effects for maturation timing are mediated via body condition in Atlantic salmon. *bioRxiv*. <https://doi.org/10.1101/780437>
- Debes PV, Hutchings JA (2014) Effects of domestication on parr maturity, growth, and vulnerability to predation in Atlantic salmon. *Canadian J Fish Aquat Sci* 71:1371–1384. <https://doi.org/10.1139/cjfas-2013-0618>
- Debes PV, Plavchenko N, Erkinaro J, Primmer CR (2020) Genetic growth potential, rather than phenotypic size, predicts migration phenotype in Atlantic salmon. *Proc R Soc B* 287(2020):0867. <https://doi.org/10.1098/rspb.2020.0867>
- de Roos AM, Boukal DS, Persson L (2006) Evolutionary regime shifts in age and size at maturation of exploited fish stocks 273:1873–1880. <https://doi.org/10.1098/rspb.2006.3518>

- Dodson JJ, Aubin-Horth N, Thériault V, Páez DJ (2013) The evolutionary ecology of alternative migratory tactics in salmonid fishes. *Biol Rev* 88:602–625. <https://doi.org/10.1111/brv.12019>
- Duffy TA, Iwanowicz LR, McCormick SD (2014) Comparative responses to endocrine disrupting compounds in early life stages of Atlantic salmon. *Salmo salar* Aquat Toxicol 152:1–10. <https://doi.org/10.1016/j.aquatox.2014.03.015>
- Duston J, Saunders RL (1997) Life histories of Atlantic salmon altered by winter temperature and summer rearing in fresh- or sea-water. *Environ Biol Fishes* 50:149–166. <https://doi.org/10.1023/A:1007373016067>
- Duston J, Saunders RL (1999) Effect of winter food deprivation on growth and sexual maturity of Atlantic salmon (*Salmo salar*) in seawater. *Canadian J Fish Aquat Sci* 56:201–207. <https://doi.org/10.1139/f98-165>
- Einum S (2003) Atlantic salmon growth in strongly food-limited environments: Effects of egg size and paternal phenotype? *Environ Biol Fishes* 67:263–268. <https://doi.org/10.1023/A:1025818627731>
- Einum S, Fleming IA (2000) Highly fecund mothers sacrifice offspring survival to maximize fitness. *Nature* 405:565. <https://doi.org/10.1038/35014600>
- Einum S, Thorstad EB, Næsje TF (2002) Growth rate correlations across life-stages in female Atlantic salmon. *J Fish Biol* 60:780–784. <https://doi.org/10.1111/j.1095-8649.2002.tb01704.x>
- Elks CE et al (2010) Thirty new loci for age at menarche identified by a meta-analysis of genome-wide association studies. *Nat Genet* 42:1077–1085. <https://doi.org/10.1038/ng.714>
- Elliott JM (1991) Tolerance and resistance to thermal stress in juvenile Atlantic salmon. *Salmo salar* Freshw Biol 25:61–70. <https://doi.org/10.1111/j.1365-2427.1991.tb00473.x>
- Elliott JM, Elliott JA (2010) Temperature requirements of Atlantic salmon *Salmo salar*, brown trout *Salmo trutta* and Arctic charr *Salvelinus alpinus*: predicting the effects of climate change. *J Fish Biol* 77:1793–1817. <https://doi.org/10.1111/j.1095-8649.2010.02762.x>
- Ellis BJ (2013) The hypothalamic–pituitary–gonadal axis: A switch-controlled, condition-sensitive system in the regulation of life history strategies. *Hormones Behav* 64:215–225. <https://doi.org/10.1016/j.yhbeh.2013.02.012>
- Erkinaro J et al (2019) Life history variation across four decades in a diverse population complex of Atlantic salmon in a large subarctic river. *Can J Fish Aquat Sci* 76:42–55. <https://doi.org/10.1139/cjfas-2017-0343>
- Erkinaro J, Dempson JB, Julkunen M, Niemelä E (1997) Importance of ontogenetic habitat shifts to juvenile output and life history of Atlantic salmon in a large subarctic river: an approach based on analysis of scale characteristics. *J Fish Biol* 51:1174–1185. <https://doi.org/10.1111/j.1095-8649.1997.tb01134.x>
- Figeac N et al. (2019) VGLL3 operates via TEAD1, TEAD3 and TEAD4 to influence myogenesis in skeletal muscle. *J Cell Sci* 132:jcs225946. <https://doi.org/10.1242/jcs.225946>
- Finstad AG, Jonsson B (2012) Effect of incubation temperature on growth performance in Atlantic salmon. *Mar Ecol Progress Ser* 454:75–82. <https://doi.org/10.3354/meps09643>
- Finstad AG, Armstrong JD, Nislow KH (2011) Freshwater habitat requirements of Atlantic salmon. In: Aas Ø, Einum S, Klemetsen A, Skurdal J (eds) *Atlantic Salmon Ecology*. 1st edn. Blackwell Publishing Ltd., Hoboken, NJ, pp 67–87. <https://doi.org/10.1002/9781444327755.ch3>
- Fitzpatrick MS, Van der Kraak G, Schreck CB (1986) Profiles of plasma sex steroids and gonadotropin in coho salmon, *Oncorhynchus kisutch*, during final maturation. *Gen Comp Endocrinol* 62:437–451. [https://doi.org/10.1016/0016-6480\(86\)90054-7](https://doi.org/10.1016/0016-6480(86)90054-7)
- Fjellidal PG, Hansen T, Huang T-S (2011) Continuous light and elevated temperature can trigger maturation both during and immediately after smoltification in male Atlantic salmon (*Salmo salar*). *Aquaculture* 321:93–100. <https://doi.org/10.1016/j.aquaculture.2011.08.017>
- Fjellidal PG, Schulz R, Nilsen TO, Andersson E, Norberg B, Hansen TJ (2018) Sexual maturation and smoltification in domesticated Atlantic salmon (*Salmo salar* L.)—is there a developmental conflict? *Physiol Rep* 6:e13809–e13809. <https://doi.org/10.14814/phy2.13809>
- Fleming IA (1996) Reproductive strategies of Atlantic salmon: ecology and evolution. *Rev Fish Biol Fisheries* 6:379–416. <https://doi.org/10.1007/BF00164323>
- Fleming IA (1998) Pattern and variability in the breeding system of Atlantic salmon (*Salmo salar*), with comparisons to other salmonids. *Canadian J Fish Aquat Sci* 55:59–76. <https://doi.org/10.1139/d98-009>
- Fleming IA, Einum S (2011) Reproductive ecology: a tale of two sexes. In: Aas Ø, Einum S, Klemetsen A, Skurdal J (eds) *Atlantic Salmon Ecology*. Wiley, pp 33–65. <https://doi.org/10.1002/9781444327755.ch2>
- Fleming IA, Gross MR (1994) Breeding competition in a Pacific salmon (Coho: *Oncorhynchus kisutch*): measures of natural and sexual selection. *Evolution* 48:637–657. <https://doi.org/10.2307/2410475>
- Fleming IA, Reynolds JD (2004) Salmonid breeding systems. In: Hendry AP, Stearns SC (eds) *Evolution illuminated: salmon and their relatives*. Oxford University Press Inc., New York. 264–294
- Fleming IA, Jonsson B, Gross MR, Lamberg A (1996) An experimental study of the reproductive behaviour and success of farmed and wild Atlantic salmon (*Salmo salar*). *J Appl Ecol* 33:893–905. <https://doi.org/10.2307/2404960>
- Foote CJ, Brown GS, Wood CC (1997) Spawning success of males using alternative mating tactics in sockeye salmon, *Oncorhynchus nerka*. *Canadian J Fish Aquat Sci* 54:1785–1795. <https://doi.org/10.1139/f97-080>
- França LR, Nóbrega RH, Morais RDVS, De Castro Assis LH, Schulz RW (2015) 13—Sertoli cell structure and function in anamniote vertebrates. In: Griswold MD (ed) *Sertoli Cell Biology (Second Edition)*. Academic Press, Oxford, pp 385–407. <https://doi.org/10.1016/B978-0-12-417047-6.00013-2>
- Fraser DJ (2008) How well can captive breeding programs conserve biodiversity? A review of salmonids. *Evol Appl* 1:535–586. <https://doi.org/10.1111/j.1752-4571.2008.00036.x>
- Fraser TWK, Fjellidal PG, Schulz RW, Norberg B, Hansen TJ (2019) Termination of puberty in out-of-season male Atlantic salmon smolts. *Comp Biochem Physiol Part A Mol Integr Physiol*. <https://doi.org/10.1016/j.cbpa.2019.03.011>

- Friedland K, Haas RE (1996) Marine post-smolt growth and age at maturity of Atlantic salmon. *J Fish Biol* 48:1–15. <https://doi.org/10.1111/j.1095-8649.1996.tb01414.x>
- Friedland KD, Hansen LP, Dunkley DA, MacLean JC (2000) Linkage between ocean climate, post-smolt growth, and survival of Atlantic salmon (*Salmo salar* L.) in the North Sea area. *ICES Journal of Marine Science* 57:419–429. <https://doi.org/10.1006/jmsc.1999.0639>
- Friedland KD, Reddin DG, Castonguay M (2003) Ocean thermal conditions in the post-smolt nursery of North American Atlantic salmon. *ICES J Mar Sci* 60:343–355. [https://doi.org/10.1016/S1054-3139\(03\)00022-5](https://doi.org/10.1016/S1054-3139(03)00022-5)
- Friedland KD, Chaput G, MacLean JC (2005) The emerging role of climate in post-smolt growth of Atlantic salmon. *ICES J Mar Sci* 62:1338–1349. <https://doi.org/10.1016/j.icejms.2005.04.013>
- Friedland KD, Moore D, Hogan F (2009) Retrospective growth analysis of Atlantic salmon (*Salmo salar*) from the Miramichi River Canada. *Canadian J Fish Aquat Sci* 66:1294–1308. <https://doi.org/10.1139/f09-077>
- Gage MJG, Stockley P, Parker GA (1995) Effects of alternative male mating strategies on characteristics of sperm production in the Atlantic salmon (*Salmo salar*): Theoretical and empirical investigations. *Philos Trans R Soc London Ser B Biol Sci* 350:391–399. <https://doi.org/10.1098/rstb.1995.0173>
- Gage MJG, Macfarlane CP, Yeates S, Ward RG, Searle JB, Parker GA (2004) Spermatozoal traits and sperm competition in Atlantic salmon: relative sperm velocity is the primary determinant of fertilization success. *Curr Biol* 14:44–47. <https://doi.org/10.1016/j.cub.2003.12.028>
- Gaggiotti OE, Vetter RD (1999) Effect of life history strategy, environmental variability, and overexploitation on the genetic diversity of pelagic fish populations. *Canadian J Fish Aquat Sci* 56:1376–1388. <https://doi.org/10.1139/f99-060>
- Garant D, Fontaine P-M, Good SP, Dodson JJ, Bernatchez L (2002) The influence of male parental identity on growth and survival of offspring in Atlantic salmon (*Salmo salar*). *Evol Ecol Res* 4:537–549
- Garcia de Leaniz C et al (2007) A critical review of adaptive genetic variation in Atlantic salmon: implications for conservation. *Biol Rev* 82:173–211. <https://doi.org/10.1111/j.1469-185X.2006.00004.x>
- Gardner Pinfold Consultants Inc. (2011) Economic value of wild Atlantic salmon. Report for the Atlantic Salmon Federation. pp 1–82. <https://www.asf.ca/assets/files/gardner-pinfold-value-wild-salmon.pdf>
- Gibson RJ (1993) The Atlantic salmon in fresh water: spawning, rearing and production. *Rev Fish Biol Fish* 3:39–73. <https://doi.org/10.1007/BF00043297>
- Gibson RJH, Williams DD, McGowan C, Davidson WS (1996) The ecology of dwarf fluvial Atlantic salmon, *Salmo salar* L., cohabiting with brook trout, *Salvelinus fontinalis* [Mitchill], in Southeastern Newfoundland. *Canada. Pol Arch Hydrobiol* 43:145–166
- Gielen JT, Goos HJ, Peute J, van den Bosch RA, van Oordt PG (1982) The brain-pituitary-gonadal axis in the rainbow trout, *Salmo gairdneri*: gonadal hormones and the maturation of gonadotropic cells. *Cell Tissue Res* 225:45–56. <https://doi.org/10.1007/bf00216217>
- Gilbey J, McLay A, Houlihan D, Verspoor E (2005) Individual-level analysis of pre- and post first-feed growth and development in Atlantic salmon. *J Fish Biol* 67:1359–1369. <https://doi.org/10.1111/j.0022-1112.2005.00831.x>
- Gjerde B (1984) Response to individual selection for age at sexual maturity in Atlantic salmon. *Aquaculture* 38:229–240. [https://doi.org/10.1016/0044-8486\(84\)90147-9](https://doi.org/10.1016/0044-8486(84)90147-9)
- Godwin J, Thompson R (2012) Nonapeptides and social behavior in fishes. *Horm Behav* 61:230–238. <https://doi.org/10.1016/j.yhbeh.2011.12.016>
- Gomez JM, Weil C, Ollitrault M, Le Bail PY, Breton B, Le Gac F (1999) Growth hormone (GH) and gonadotropin subunit gene expression and pituitary and plasma changes during spermatogenesis and oogenesis in rainbow trout (*Oncorhynchus mykiss*). *Gen Comp Endocrinol* 113:413–428. <https://doi.org/10.1006/gcen.1998.7222>
- Good C, Davidson J (2016) A review of factors influencing maturation of Atlantic salmon *Salmo salar*, with focus on water recirculation aquaculture system environments. *J World Aquacult Soc* 47:605–632. <https://doi.org/10.1111/jwas.12342>
- Gorodilov YN (1996) Description of the early ontogeny of the Atlantic salmon, *Salmo salar*, with a novel system of interval (state) identification. *Environ Biol Fish* 47:109–127. <https://doi.org/10.1007/BF00005034>
- Gorodilov YN (2010) The biological clock in vertebrate embryogenesis as a mechanism of general control over the developmental organism. *Russ J Dev Biol* 41:201–216. <https://doi.org/10.1134/s1062360410040016>
- Gregory SD, Armstrong JD, Britton JR (2018) Is bigger really better? Towards improved models for testing how Atlantic salmon *Salmo salar* smolt size affects marine survival. *J Fish Biol* 92:579–592. <https://doi.org/10.1111/jfb.13550>
- Grimardias D, Merchernek N, Manicki A, Garnier J, Gaudin P, Jarry M, Beall E (2010) Reproductive success of Atlantic salmon (*Salmo salar*) mature male parr in a small river, the Nivelle: influence of shelters. *Ecol Freshw Fish* 19:510–519. <https://doi.org/10.1111/j.1600-0633.2010.00421.x>
- Gross MR (1996) Alternative reproductive strategies and tactics: Diversity within sexes. *Trends Ecol Evol* 11:92–98
- Guiry A et al (2010) Testes and brain gene expression in precocious male and adult maturing Atlantic salmon (*Salmo salar*). *BMC Genomics* 11:211. <https://doi.org/10.1186/1471-2164-11-211>
- Gutierrez AP, Lubieniecki KP, Fukui S, Withler RE, Swift B, Davidson WS (2014) Detection of quantitative trait loci (QTL) related to grilising and late sexual maturation in Atlantic salmon (*Salmo salar*). *Mar Biotechnol* 16:103–110. <https://doi.org/10.1007/s10126-013-9530-3>
- Gutierrez AP, Yá JM, Fukui S, Swift B, Davidson WS (2015) Genome-Wide Association Study (GWAS) for growth rate and age at sexual maturation in Atlantic salmon (*Salmo salar*). *PLoS ONE* 10:1–15. <https://doi.org/10.1371/journal.pone.0119730>
- Halder G, Johnson RL (2011) Hippo signaling: growth control and beyond *Development* 138:9–22. <https://doi.org/10.1242/dev.045500>

- Halperin DS, Pan C, Lusia AJ, Tontono P (2013) Vestigial-like 3 is an inhibitor of adipocyte differentiation. *J Lipid Res* 54:473–481. <https://doi.org/10.1194/jlr.m032755>
- Hamor T, Garside ET (1976) Developmental rates of embryos of Atlantic salmon, *Salmo salar* L., in response to various levels of temperature, dissolved oxygen, and water exchange. *Canadian J Zool* 54:1912–1917. <https://doi.org/10.1139/z76-221>
- Handeland SO, Imsland AK, Stefansson SO (2008) The effect of temperature and fish size on growth, feed intake, food conversion efficiency and stomach evacuation rate of Atlantic salmon post-smolts. *Aquaculture* 283:36–42. <https://doi.org/10.1016/j.aquaculture.2008.06.042>
- Hansen LP, Jonsson B, Morgan RIG, Thorpe JE (1989) Influence of parr maturity on emigration of smolting Atlantic salmon (*Salmo salar*). *Canadian J Fish Aquat Sci* 46:410–415. <https://doi.org/10.1139/f89-054>
- Hansen T, Stefansson S, Taranger GL (1992) Growth and sexual maturation in Atlantic salmon, *Salmo, salar* L., reared in sea cages at two different light regimes. *Aquacult Fish Manag* 23:275–280. <https://doi.org/10.1111/j.1365-2109.1992.tb00770.x>
- Hard JJ, Gross MR, Heino M, Hilborn R, Kope RG, Law R, Reynolds JD (2008) SYNTHESIS: Evolutionary consequences of fishing and their implications for salmon. *Evol Appl* 1:388–408. <https://doi.org/10.1111/j.1752-4571.2008.00020.x>
- Harvey AC, Tang Y, Wennevik V, Skaala Ø, Glover KA (2017) Timing is everything: Fishing-season placement may represent the most important angling-induced evolutionary pressure on Atlantic salmon populations. *Ecol Evol* 7:7490–7502. <https://doi.org/10.1002/ece3.3304>
- Healy K, Ezard THG, Jones OR, Salguero-Gómez R, Buckley YM (2019) Animal life history is shaped by the pace of life and the distribution of age-specific mortality and reproduction. *Nat Ecol Evol*. <https://doi.org/10.1038/s41559-019-0938-7>
- Hedger RD, Sundt-Hansen LE, Forseth T, Ugedal O, Diserud OH, Kvambekk ÅS, Finstad AG (2013) Predicting climate change effects on subarctic–Arctic populations of Atlantic salmon (*Salmo salar*). *Canadian J Fish Aquat Sci* 70:159–168. <https://doi.org/10.1139/cjfas-2012-0205>
- Heggberget TG (1988) Timing of spawning in Norwegian Atlantic salmon (*Salmo salar*). *Canadian J Fish Aquat Sci* 45:845–849
- Heinimaa S, Erkinaro J (2004) Characteristics of mature male parr in the northernmost Atlantic salmon populations. *J Fish Biol* 64:219–226. <https://doi.org/10.1111/j.1095-8649.2004.00308.x>
- Heinimaa S, Heinimaa P (2004) Effect of the female size on egg quality and fecundity of the wild Atlantic salmon in the sub-arctic River Tenö. *Boreal Environ Res* 9:55–62
- Hendry AP, Berg OK, Quinn TP (1999) Condition dependence and adaptation-by-time: breeding date, life history, and energy allocation within a population of salmon. *Oikos* 85:499–514. <https://doi.org/10.2307/3546699>
- Hendry AP, Castric V, Kinnison MT, Quinn TP (2003) The evolution of philopatry and dispersal: homing versus straying in salmonids. In: Sterns SC (ed) *Salmon and Their Relatives*. Oxford University Press, *Evolution Illuminated*, pp 53–91
- Herbinger CM, Friars GW (1992) Effects of winter temperature and feeding regime on the rate of early maturation in Atlantic salmon (*Salmo salar*) male parr. *Aquaculture* 101:147–162. [https://doi.org/10.1016/0044-8486\(92\)90239-H](https://doi.org/10.1016/0044-8486(92)90239-H)
- He JX, Stewart DJ (2001) Age and size at first reproduction of fishes: predictive models based only on growth trajectories. *Ecology* 82:784–791. [https://doi.org/10.1890/0012-9658\(2001\)082\[0784:AASAFR\]2.0.CO;2](https://doi.org/10.1890/0012-9658(2001)082[0784:AASAFR]2.0.CO;2)
- Hosfeld CD et al (2008) Long-term separate and combined effects of environmental hypercapnia and hyperoxia in Atlantic salmon (*Salmo salar* L.) smolts. *Aquaculture* 280:146–153. <https://doi.org/10.1016/j.aquaculture.2008.05.009>
- Houde ALS, Fraser DJ, O'Reilly P, Hutchings JA (2010) Maternal and paternal effects on fitness correlates in out-bred and inbred Atlantic salmon (*Salmo salar*). *Canadian J Fish Aquat Sci* 68:534–549. <https://doi.org/10.1139/f2011-001>
- Houston RD, Macqueen DJ (2019) Atlantic salmon (*Salmo salar* L.) genetics in the 21st century: taking leaps forward in aquaculture and biological understanding. *Anim Genet* 50:3–14. <https://doi.org/10.1111/age.12748>
- Hutchings JA (2011) Old wine in new bottles: reaction norms in salmonid fishes. *Heredity* 106:421–437. <https://doi.org/10.1038/hdy.2010.166>
- Hutchings JA et al (2019) Life-history variability and conservation status of landlocked Atlantic salmon: an overview. *Can J Fish Aquat Sci* 76:1697–1708. <https://doi.org/10.1139/cjfas-2018-0413>
- Hutchings JA, Jones MEB (1998) Life history variation and growth rate thresholds for maturity in Atlantic salmon *Salmo salar*. *Canadian J Fish Aquat Sci* 55:22–47. <https://doi.org/10.1139/d98-004>
- Hutchings JA, Morris DW (1985) The influence of phylogeny, size and behaviour on patterns of covariation in salmonid life histories. *Oikos* 45:118–124. <https://doi.org/10.2307/3565229>
- Hutchings JA, Myers RA (1994) The evolution of alternative mating strategies in variable environments. *Evol Ecol* 8:256–268. <https://doi.org/10.1007/bf01238277>
- Hvidsten NA et al (2009) Influence of sea temperature and initial marine feeding on survival of Atlantic salmon *Salmo salar* post-smolts from the Rivers Orkla and Hals, Norway. *J Fish Biol* 74:1532–1548. <https://doi.org/10.1111/j.1095-8649.2009.02219.x>
- Idler DR, Bitners II, Schmidt PJ (1961) 11-ketotestosterone: an androgen for sockeye salmon. *Canadian J Biochem Physiol* 39:1737–1742
- Imsland AK, Handeland SO, Stefansson SO (2014) Photoperiod and temperature effects on growth and maturation of pre- and post-smolt Atlantic salmon. *Aquacult Int* 22:1331–1345. <https://doi.org/10.1007/s10499-014-9750-1>
- Jacobsen JA, Hansen LP (2001) Feeding habits of wild and escaped farmed Atlantic salmon, *Salmo salar* L., in the northeast Atlantic Ices. *J Mar Sci* 58:916–933. <https://doi.org/10.1006/jmsc.2001.1084>
- Jenkins LE, Pierce AL, Graham ND, Medeiros LR, Hatch DR, Nagler JJ (2019) Elevated plasma triglycerides and growth rate are early indicators of reproductive status in post-

- spawning female steelhead trout (*Oncorhynchus mykiss*). *Conserv Physiol*. <https://doi.org/10.1093/conphys/coz038>
- Johnston IA et al (2006) Muscle and flesh quality traits in wild and farmed Atlantic salmon. *Aquaculture* 256:323–336. <https://doi.org/10.1016/j.aquaculture.2006.02.048>
- Johnston SE et al (2013) Fish scales and SNP chips: SNP genotyping and allele frequency estimation in individual and pooled DNA from historical samples of Atlantic salmon (*Salmo salar*). *BMC Genomics* 14:439. <https://doi.org/10.1186/1471-2164-14-439>
- Johnston SE et al (2014) Genome-wide SNP analysis reveals a genetic basis for sea-age variation in a wild population of Atlantic salmon (*Salmo salar*). *Mol Ecol* 23:3452–3468. <https://doi.org/10.1111/mec.12832>
- Jokikokko E, Jutila E (2005) Effect of fishing regulation on the occurrence of repeat spawners and age distribution of Atlantic salmon in a northern Baltic river. *Fish Manage Ecol* 12:341–347. <https://doi.org/10.1111/j.1365-2400.2005.00457.x>
- Jokikokko E, Kallio-Nyberg I, Jutila E (2004) The timing, sex and age composition of the wild and reared Atlantic salmon ascending the Simojoki River, northern Finland. *J Appl Ichthyol* 20:37–42. <https://doi.org/10.1111/j.1439-0426.2004.00491.x>
- Jones MW, Hutchings JA (2002) Individual variation in Atlantic salmon fertilization success: implications for effective population size. *Ecol Appl* 12:184–193. <https://doi.org/10.2307/3061145>
- Jonsson B, Jonsson N (1993) Partial migration: niche shift versus sexual maturation in fishes. *Rev Fish Biol Fisheries* 3:348–365. <https://doi.org/10.1007/BF00043384>
- Jonsson N, Jonsson B (2003) Energy allocation among developmental stages, age groups, and types of Atlantic salmon (*Salmo salar*) spawners. *Canadian J Fish Aquat Sci* 60:506–516. <https://doi.org/10.1139/F03-042>
- Jonsson N, Jonsson B (2007) Sea growth, smolt age and age at sexual maturation in Atlantic salmon. *J Fish Biol* 71:245–252. <https://doi.org/10.1111/j.1095-8649.2007.01488.x>
- Jonsson B, Jonsson N (2011) Ecology of Atlantic Salmon and Brown Trout: Habitat as a Template for Life Histories. Springer, London. <https://doi.org/10.1007/978-94-007-1189-1>
- Jonsson B, Jonsson N (2014) Early environment influences later performance in fishes. *J Fish Biol* 85:151–188. <https://doi.org/10.1111/jfb.12432>
- Jonsson B, Jonsson N (2016) Trans-generational maternal effect: temperature influences egg size of the offspring in Atlantic salmon *Salmo salar*. *J Fish Biol* 89:1482–1487. <https://doi.org/10.1111/jfb.13040>
- Jonsson B, Jonsson N (2018) Egg incubation temperature affects the timing of the Atlantic salmon *Salmo salar* homing migration. *J Fish Biol* 93:1016–1020. <https://doi.org/10.1111/jfb.13817>
- Jonsson N, Jonsson B, Hansen LP (1990) Partial segregation in the timing of migration of Atlantic salmon of different ages. *Anim Behav* 40:313–321. [https://doi.org/10.1016/S0003-3472\(05\)80926-1](https://doi.org/10.1016/S0003-3472(05)80926-1)
- Jonsson N, Hansen LP, Jonsson B (1991) Variation in age, size and repeat spawning of adult Atlantic salmon in relation to river discharge. *J Animal Ecol* 60:937–947. <https://doi.org/10.2307/5423>
- Jonsson N, Jonsson B, Hansen LP (1997) Changes in proximate composition and estimates of energetic costs during upstream migration and spawning in Atlantic salmon *Salmo salar*. *J Anim Ecol* 66:425–436. <https://doi.org/10.2307/5987>
- Jonsson B, Finstad AG, Jonsson N (2012) Winter temperature and food quality affect age at maturity: an experimental test with Atlantic salmon (*Salmo salar*). *Canadian J Fish Aquat Sci* 69:1817–1826. <https://doi.org/10.1139/f2012-108>
- Jonsson B, Jonsson N, Finstad AG (2013) Effects of temperature and food quality on age and size at maturity in ectotherms: An experimental test with Atlantic salmon. *J Anim Ecol* 82:201–210. <https://doi.org/10.1111/j.1365-2656.2012.02022.x>
- Jonsson B, Jonsson N, Finstad AG (2014) Linking embryonic temperature with adult reproductive investment in Atlantic salmon *Salmo salar*. *Mar Ecol Prog Ser* 515:217–226. <https://doi.org/10.3354/meps11006>
- Juanes F, Perez J, Garcia-Vazquez E (2007) Reproductive strategies in small populations: using Atlantic salmon as a case study. *Ecol Freshw Fish* 16:468–475. <https://doi.org/10.1111/j.1600-0633.2007.00224.x>
- Julien HP, Bergeron NE (2006) Effect of fine sediment infiltration during the incubation period on Atlantic salmon (*Salmo salar*) embryo survival. *Hydrobiologia* 563:61–71. <https://doi.org/10.1007/s10750-005-1035-2>
- Jutila E, Jokikokko E, Julkunen M (2003) Management of Atlantic salmon in the Simojoki river, northern Gulf of Bothnia: effects of stocking and fishing regulation. *Fish Res* 64:5–17. [https://doi.org/10.1016/s0165-7836\(03\)00107-3](https://doi.org/10.1016/s0165-7836(03)00107-3)
- Kadri S, Mitchell DF, Metcalfe NB, Huntingford FA, Thorpe JE (1996) Differential patterns of feeding and resource accumulation in maturing and immature Atlantic salmon. *Salmo salar* *Aquaculture* 142:245–257. [https://doi.org/10.1016/0044-8486\(96\)01258-6](https://doi.org/10.1016/0044-8486(96)01258-6)
- Kallio-Nyberg I, Saloniemä I, Jutila E, Jokikokko E (2011) Effect of hatchery rearing and environmental factors on the survival, growth and migration of Atlantic salmon in the Baltic Sea. *Fish Res* 109:285–294. <https://doi.org/10.1016/j.fishres.2011.02.015>
- Kardos M, Shafer ABA (2018) The peril of gene-targeted conservation. *Trends Ecol Evol* 33:827–839. <https://doi.org/10.1016/j.tree.2018.08.011>
- Kasper C et al (2017) Genetics and developmental biology of cooperation. *Mol Ecol* 26:4364–4377. <https://doi.org/10.1111/mec.14208>
- Kawauchi H (2006) Functions of melanin-concentrating hormone in fish *J Exp Zool A Comp. Exp Biol* 305:751–760. <https://doi.org/10.1002/jez.a.310>
- Kazakov RV (1981) The effect of the size of Atlantic salmon, *Salmo salar* L., eggs on embryos and alevins. *J Fish Biol* 19:353–360. <https://doi.org/10.1111/j.1095-8649.1981.tb05838.x>
- Keenleyside MHA, Yamamoto F, T. (1962) Territorial behaviour of juvenile Atlantic salmon (*Salmo salar* L.) Behaviour 19:139–169. <http://www.jstor.org/stable/4533008>
- King HR, Pankhurst NW (2007) Advanced effects of advanced temperature and photoperiod regimes and LHRHa

- injection on ovulation in Atlantic salmon (*Salmo salar*). *Aquaculture* 273:729–738. <https://doi.org/10.1016/j.aquaculture.2007.07.008>
- Kjørner-Semb E et al. (2018) *Vgll3* and the Hippo pathway are regulated in Sertoli cells upon entry and during puberty in Atlantic salmon testis. *Sci Rep* 8:1912. <https://doi.org/10.1038/s41598-018-20308-1>
- Klaminder J, Jonsson M, Leander J, Fahlman J, Brodin T, Fick J, Hellström G (2019) Less anxious salmon smolt become easy prey during downstream migration. *Sci Total Environ* 687:488–493. <https://doi.org/10.1016/j.scitotenv.2019.05.488>
- Kleppe L, Edvardsen RB, Furmanek T, Andersson E, Skaftnesmo KO, Thyri Segafredo F, Wargelius A (2020) Transcriptomic analysis of dead end knockout testis reveals germ cell and gonadal somatic factors in Atlantic salmon. *BMC Genomics* 21:99. <https://doi.org/10.1186/s12864-020-6513-4>
- Koskela J, Pirhonen J, Jobling M (1997) Effect of low temperature on feed intake, growth rate and body composition of juvenile Baltic salmon. *Aquacult Int* 5:479–488. <https://doi.org/10.1023/A:1018397014684>
- Kostow KE (2004) Differences in juvenile phenotypes and survival between hatchery stocks and a natural population provide evidence for modified selection due to captive breeding. *Can J Fish Aquat Sci* 61:577–589. <https://doi.org/10.1139/f04-019>
- Kudo H, Kimura T, Hasegawa Y, Abe T, Ichimura M, Ijiri S (2018) Involvement of 11-ketotestosterone in hooknose formation in male pink salmon (*Oncorhynchus gorbuscha*) jaws. *Gen Comp Endocrinol* 260:41–50. <https://doi.org/10.1016/j.ygcen.2018.02.009>
- Kuparinen A, Hutchings JA (2017) Genetic architecture of age at maturity can generate divergent and disruptive harvest-induced evolution. *Philos Trans R Soc B Biol Sci*. <https://doi.org/10.1098/rstb.2016.0035>
- Kuparinen A, Hutchings JA (2019) When phenotypes fail to illuminate underlying genetic processes in fish and fisheries science. *ICES J Mar Sci*. <https://doi.org/10.1093/icesjms/fsz002>
- Kuparinen A, Merilä J (2007) Detecting and managing fisheries-induced evolution. *Trends Ecol Evol* 22:652–659. <https://doi.org/10.1016/j.tree.2007.08.011>
- Kurko J, Debes PV, House A, Aykanat T, Erkinaro J, Primmer CR (2020) Transcription profiles of age-at-maturity-associated genes suggest cell fate commitment regulation as a key factor in the Atlantic salmon maturation process G3: Genes. *Genomes Genetics* 10:235–246. <https://doi.org/10.1534/g3.119.400882>
- Kusche H, Côté G, Hernandez C, Normandeau E, Boivin-Delisle D, Bernatchez L (2017) Characterization of natural variation in North American Atlantic Salmon populations (Salmonidae: *Salmo salar*) at a locus with a major effect on sea age. *Ecol Evol* 7:5797–5807. <https://doi.org/10.1002/ece3.3132>
- Laan M, Richmond H, He C, Campbell RK (2002) Zebrafish as a model for vertebrate reproduction: characterization of the first functional zebrafish (*Danio rerio*) gonadotropin receptor. *General Comp Endocrinol* 125:349–364. <https://doi.org/10.1006/gcen.2001.7738>
- Lam ME, Borch T (2011) Cultural valuing of fishery resources by the Norwegian Saami. *Global Ecol Integr Sci Int Law*. <https://doi.org/10.5848/CSP.2833.00020>
- Larder R, Clark DD, Miller NL, Mellon PL (2011) Hypothalamic dysregulation and infertility in mice lacking the homeodomain protein Six6. *J Neurosci* 31:426–438. <https://doi.org/10.1523/JNEUROSCI.1688-10.2011>
- Le Gac F, Loir M (1988) Control of testis function in fish: in vitro studies of gonadotropic regulation in the trout (*Salmo gairdneri*). *Reprod Nutr Develop* 28:1031–1046
- Le Gac F, Blaise O, Fostier A, Le Bail PY, Loir M, Mourou B, Weil C (1993) Growth hormone (GH) and reproduction: a review. *Fish Physiol Biochem* 11:219–232. <https://doi.org/10.1007/bf00004569>
- Lehnert SJ et al (2019) Genomic signatures and correlates of widespread population declines in salmon. *Nat Commun* 10:2996. <https://doi.org/10.1038/s41467-019-10972-w>
- Lemaître J-F, Gaillard J-M (2017) Reproductive senescence: new perspectives in the wild. *Biol Rev* 92:2182–2199. <https://doi.org/10.1111/brv.12328>
- Lepais O, Manicki A, Glise S, Buoro M, Bardonnat A (2017) Genetic architecture of threshold reaction norms for male alternative reproductive tactics in Atlantic salmon (*Salmo salar* L.). *Sci Rep* 7:43552–43552. <https://doi.org/10.1038/srep43552>
- Letcher BH, Gries G, Juanes F (2002) Survival of stream-dwelling Atlantic salmon: effects of life history variation, season, and age. *Trans Am Fish Soc* 131:838–854. [https://doi.org/10.1577/1548-8659\(2002\)131<0838:SOSDAS>2.0.CO;2](https://doi.org/10.1577/1548-8659(2002)131<0838:SOSDAS>2.0.CO;2)
- Lien S et al (2016) The Atlantic salmon genome provides insights into rediploidization. *Nature* 533:200. <https://doi.org/10.1038/nature17164>
- Lubzens E, Young G, Bobe J, Cerdà J (2010) Oogenesis in teleosts: How fish eggs are formed. *Gen Comp Endocrinol* 165:367–389. <https://doi.org/10.1016/j.ygcen.2009.05.022>
- Luckenbach JA, Iliev DB, Goetz FW, Swanson P (2008) Identification of differentially expressed ovarian genes during primary and early secondary oocyte growth in coho salmon *Oncorhynchus kisutch*. *Reprod Biol Endocrinol* 6:2. <https://doi.org/10.1186/1477-7827-6-2>
- Macqueen DJ et al (2017) Functional Annotation of All Salmonid Genomes (FAASG): an international initiative supporting future salmonid research, conservation and aquaculture. *BMC Genomics* 18:484. <https://doi.org/10.1186/s12864-017-3862-8>
- Mank JE (2017) Population genetics of sexual conflict in the genomic era. *Nat Rev Genet* 18:721. <https://doi.org/10.1038/nrg.2017.83>
- Martin JHA, Mitchell KA (1985) Influence of sea temperature upon the numbers of grilse and multi-sea-winter Atlantic salmon (*Salmo salar*) caught in the vicinity of the River Dee (Aberdeenshire). *Canadian J Fish Aquat Sci* 42:1513–1521. <https://doi.org/10.1139/f85-189>
- Matsubayashi J et al (2020) Tracking long-distance migration of marine fishes using compound-specific stable isotope analysis of amino acids. *Ecol Lett* 23:881–890. <https://doi.org/10.1111/ele.13496>
- Maugars G, Schmitz M (2008a) Expression of gonadotropin and gonadotropin receptor genes during early sexual

- maturation in male Atlantic salmon parr. *Mol Reprod Dev* 75:403–413. <https://doi.org/10.1002/mrd.20767>
- Maugars G, Schmitz M (2008b) Gene expression profiling during spermatogenesis in early maturing male Atlantic salmon parr testes. *Gen Comp Endocrinol* 159:178–187. <https://doi.org/10.1016/j.ygcen.2008.08.008>
- McClure CA, Hammell KL, Moore M, Dohoo IR, Burnley H (2007) Risk factors for early sexual maturation in Atlantic salmon in seawater farms in New Brunswick and Nova Scotia. *Canada Aquacult* 272:370–379. <https://doi.org/10.1016/j.aquaculture.2007.08.039>
- McCormick SD, Hansen LP, Quinn TP, Saunders RL (1998) Movement, migration, and smolting of Atlantic salmon (*Salmo salar*). *Canadian J Fish Aquat Sci* 55:77–92. <https://doi.org/10.1139/d98-011>
- McCormick SD, Shrimpton JM, Moriyama S, Björnsson BT (2002) Effects of an advanced temperature cycle on smolt development and endocrinology indicate that temperature is not a zeitgeber for smolting in Atlantic salmon. *J Exp Biol* 205:3553–3560
- McCormick SD, O’Dea MF, Moeckel AM, Lerner DT, Björnsson BT (2005) Endocrine disruption of parr-smolt transformation and seawater tolerance of Atlantic salmon by 4-nonylphenol and 17 β -estradiol. *General Comp Endocrinol* 142:280–288. <https://doi.org/10.1016/j.ygcen.2005.01.015>
- McCormick SD, Shrimpton JM, Moriyama S, Björnsson BT (2007) Differential hormonal responses of Atlantic salmon parr and smolt to increased daylength: A possible developmental basis for smolting. *Aquaculture* 273:337–344. <https://doi.org/10.1016/j.aquaculture.2007.10.015>
- McCormick MI, Ryen CA, Munday PL, Walker SPW (2010) Differing mechanisms underlie sexual size-dimorphism in two populations of a sex-changing fish. *Plos One*. <https://doi.org/10.1371/journal.pone.0010616>
- McGinnity P et al (2003) Fitness reduction and potential extinction of wild populations of Atlantic salmon *Salmo salar*, as a result of interactions with escaped farm salmon. *Proc R Soc London Ser B Biol Sci* 270:2443–2450. <https://doi.org/10.1098/rspb.2003.2520>
- Melo MC et al (2015) Androgens directly stimulate spermatogonial differentiation in juvenile Atlantic salmon (*Salmo salar*). *Gen Comp Endocrinol* 211:52–61. <https://doi.org/10.1016/j.ygcen.2014.11.015>
- Melo MC, Andersson E, Fjellidal PG, Bogerd J, Franca LR, Taranger GL, Schultz RW (2014) Salinity and photoperiod modulate pubertal development in Atlantic salmon (*Salmo salar*). *J Endocrinol* 220:319–332. <https://doi.org/10.1530/JOE-13-0240>
- Meng Z, Moroishi T, Guan KL (2016) Mechanisms of Hippo pathway regulation. *Genes Dev* 30:1–17. <https://doi.org/10.1101/gad.274027.115>
- Metcalf NB (1998) The interaction between behavior and physiology in determining life history patterns in Atlantic salmon (*Salmo salar*). *Canadian J Fish Aquat Sci* 55:93–103. <https://doi.org/10.1139/d98-005>
- Metcalf NB, Thorpe JE (1990) Determinants of geographical variation in the age of seaward-migrating salmon *Salmo salar*. *J Animal Ecol* 59:135–145. <https://doi.org/10.2307/5163>
- Metcalf NB, Thorpe JE (1992) Early predictors of life-history events: the link between first feeding date, dominance and seaward migration in Atlantic salmon *Salmo salar* L. *J Fish Biol* 41:93–99. <https://doi.org/10.1111/j.1095-8649.1992.tb03871.x>
- Metcalf NB, Valdimarsson SK, Fraser NHC (1997) Habitat profitability and choice in a sit-and-wait predator: juvenile salmon prefer slower currents on darker nights. *J Anim Ecol* 66:866–875. <https://doi.org/10.2307/6002>
- Michielsens CGJ et al (2006) A Bayesian state-space mark-recapture model to estimate exploitation rates in mixed stock fisheries. *Canadian J Fish Aquat Sci* 63:321–344. <https://doi.org/10.1139/F05-215>
- Miettinen A et al. (2021) A large wild salmon stock shows genetic and life history differentiation within, but not between, rivers *Conserv Genet* 22:35–51. <https://doi.org/10.1007/s10592-020-01317-y>
- Mills KE, Pershing AJ, Sheehan TF, Mountain D (2013) Climate and ecosystem linkages explain widespread declines in North American Atlantic salmon populations. *Glob Change Biol* 19:3046–3061. <https://doi.org/10.1111/gcb.12298>
- Miura T, Yamauchi K, Takahashi H, Nagahama Y (1992) The role of hormones in the acquisition of sperm motility in salmonid fish. *J Exp Zool* 261:359–363. <https://doi.org/10.1002/jez.1402610316>
- Miwa S, Yan L, Swanson P (1994) Localization of two gonadotropin receptors in the walmon gonad by in vitro ligand autoradiography. *Biol Reprod* 50:629–642. <https://doi.org/10.1095/biolreprod50.3.629>
- Mjølnerod IB, Fleming IA, Refseth UH, Hindar K (1998) Mate and sperm competition during multiple-male spawnings of Atlantic salmon. *Canadian J Zool Revue Can De Zoologie* 76:70–75. <https://doi.org/10.1139/z97-173>
- Mobley KB et al. (2019) Home ground advantage: local Atlantic salmon have higher reproductive fitness than dispersers in the wild. *Sci Adv* 5:eaav1112. <https://doi.org/10.1126/sciadv.aav1112>
- Mobley KB, Granroth-Wilding H, Ellmen M, Orell P, Erkinaro J, Primmer CR (2020) Time spent in distinct life-history stages has sex-specific effects on reproductive fitness in wild Atlantic salmon. *Mol Ecol* 29:1173–1184. <https://doi.org/10.1111/mec.15390>
- Mohamed AR et al (2019) Polygenic and sex specific architecture for two maturation traits in farmed Atlantic salmon. *BMC Genomics* 20:139. <https://doi.org/10.1186/s12864-019-5525-4>
- Montserrat N, Gonzalez A, Mendez E, Piferrer F, Planas JV (2004) Effects of follicle stimulating hormone on estradiol-17 beta production and P-450 aromatase (CYP19) activity and mRNA expression in brown trout vitellogenic ovarian follicles in vitro. *Gen Comp Endocrinol* 137:123–131. <https://doi.org/10.1016/j.ygcen.2004.02.011>
- Moore A, Bendall B, Barry J, Waring C, Crooks N, Crooks L (2012) River temperature and adult anadromous Atlantic salmon, *Salmo salar*, and brown trout, *Salmo trutta*. *Fish Manage Ecol* 19:518–526. <https://doi.org/10.1111/j.1365-2400.2011.00833.x>
- Morais RDVS et al (2017) Antagonistic regulation of spermatogonial differentiation in zebrafish (*Danio rerio*) by

- Igf3 and Amh. *Mol Cell Endocrinol* 454:112–124. <https://doi.org/10.1016/j.mce.2017.06.017>
- Morais RDVS, Nóbrega RH, Gómez-González NE, Schmidt R, Bogerd J, França LR, Schulz RW (2013) Thyroid hormone stimulates the proliferation of Sertoli cells and single type A spermatogonia in adult zebrafish (*Danio rerio*) testis. *Endocrinology* 154:4365–4376. <https://doi.org/10.1210/en.2013-1308>
- Moustakas-Verho JE, Kurko J, House AH, Erkinaro J, Debes P, Primmer CR (2020) Developmental expression patterns of *six6*: A gene linked with spawning ecotypes in Atlantic salmon. *Gene Express Patterns* 38:119149. <https://doi.org/10.1016/j.gep.2020.119149>
- Myers RA (1984) Demographic consequences of precocious maturation of Atlantic salmon (*Salmo salar*). *Canadian J Fish Aquat Sci* 41:1349–1353. <https://doi.org/10.1139/f84-165>
- Myers RA, Hutchings JA, Gibson RJ (1986) Variation in male parr maturation within and among populations of Atlantic salmon *Salmo salar*. *Canadian J Fish Aquat Sci* 43:1242–1248. <https://doi.org/10.1139/f86-154>
- Myrvold KM, Mawle GW, Andersen O, Aas Ø (2019) The Social, economic and cultural values of wild Atlantic salmon. A review of literature for the period 2009–2019 and an assessment of changes in values. Norwegian Institute for Nature Research. <https://brage.nina.no/nina-xmlui/handle/11250/2627172>
- Nagahama Y, Adachi S (1985) Identification of maturation-inducing steroid in a teleost, the amago salmon (*Oncorhynchus rhodurus*). *Dev Biol* 109:428–435. [https://doi.org/10.1016/0012-1606\(85\)90469-5](https://doi.org/10.1016/0012-1606(85)90469-5)
- Nagahama Y, Hirose K, Young G, Adachi S, Suzuki K, Tamaoki B (1983) Relative in vitro effectiveness of 17 alpha, 20 beta-dihydroxy-4-pregnen-3-one and other pregnene derivatives on germinal vesicle breakdown in oocytes of ayu (*Plecoglossus altivelis*), amago salmon (*Oncorhynchus rhodurus*), rainbow trout (*Salmo gairdneri*), and goldfish (*Carassius auratus*). *Gen Comp Endocrinol* 51:15–23. [https://doi.org/10.1016/0016-6480\(83\)90092-8](https://doi.org/10.1016/0016-6480(83)90092-8)
- Nakane Y et al (2013) The saccus vasculosus of fish is a sensor of seasonal changes in day length. *Nat Commun* 4:2108. <https://doi.org/10.1038/ncomms3108>
- Nicieza AG, Braña F (1993) Relationships among smolt size, marine growth, and sea age at maturity of Atlantic salmon (*Salmo salar*) in northern Spain. *Canadian J Fish Aquat Sci*, 50:1632–1640. <https://doi.org/10.1139/f93-184>
- Nielsen EE, Hansen MM (2008) Waking the dead: the value of population genetic analyses of historical samples. *Fish Fish* 9:450–461. <https://doi.org/10.1111/j.1467-2979.2008.00304.x>
- Niemelä E, Erkinaro J, Julkunen M, Hassinen E, Lämsmä M, Brørs S (2006a) Temporal variation in abundance, return rate and life histories of previously spawned Atlantic salmon in a large subarctic river. *J Fish Biol*, 68:1222–1240. <https://doi.org/10.1111/j.0022-1112.2006.001012.x>
- Niemelä E, Orell P, Erkinaro J, Dempson JB, Br Ørs S, Svenning MA, Hassinen E (2006b) Previously spawned Atlantic salmon ascend a large subarctic river earlier than their maiden counterparts. *J Fish Biol* 69:1151–1163. <https://doi.org/10.1111/j.1095-8649.2006.01190.x>
- Nóbrega RH, Morais RDVS, Crespo D, de Waal PP, de França LR, Schulz RW, Bogerd J (2015) Fsh stimulates spermatogonial proliferation and differentiation in zebrafish via Igf3. *Endocrinology*, 156:38043817. <https://doi.org/10.1210/en.2015-1157>
- Norrgård JR, Bergman E, Schmitz M, Greenberg LA (2014) Effects of feeding regimes and early maturation on migratory behaviour of landlocked hatchery-reared Atlantic salmon *Salmo salar* smolts. *J Fish Biol* 85:1060–1073. <https://doi.org/10.1111/jfb.12522>
- Nozaki M et al (1990) Salmonid pituitary gonadotrophs. I Distinct cellular distributions of two gonadotropins, GTH I and GTH II. *Gen Comp Endocrinol* 77:348–357. [https://doi.org/10.1016/0016-6480\(90\)90224-a](https://doi.org/10.1016/0016-6480(90)90224-a)
- O’Connell MF, Dempson JB, Chaput G (2006) Aspects of the life history, biology, and population dynamics of Atlantic salmon (*Salmo salar* L.) in eastern Canada. *Canadian Sci Adv Secret Res Doc* 2006/014, p 47
- O’Sullivan RJ et al (2019) Evolutionary stasis of a heritable morphological trait in a wild fish population despite apparent directional selection. *Ecol Evol* 9:7096–7111. <https://doi.org/10.1002/ece3.5274>
- Ohga H, Selvaraj S, Matsuyama M (2018) The Roles of kisspeptin system in the reproductive physiology of fish with special reference to chub mackerel studies as main axis. *Front Endocrinol*. <https://doi.org/10.3389/fendo.2018.00147>
- Oinonen S et al (2017) International fisheries management and recreational benefits: the case of Baltic salmon. *Mar Resour Econ* 31:433–433. <https://doi.org/10.2307/44011981>
- Økland F, Jonsson B, Jensen AJ, Hansen LP (1993) Is there a threshold size regulating seaward migration of brown trout and Atlantic salmon? *J Fish Biol* 42:541–550. <https://doi.org/10.1111/j.1095-8649.1993.tb00358.x>
- Oligny-Hébert H, Senay C, Enders EC, Boisclair D (2015) Effects of diel temperature fluctuation on the standard metabolic rate of juvenile Atlantic salmon (*Salmo salar*): influence of acclimation temperature and provenience. *Canadian J Fish Aquat Sci*, 72:1306–1315. <https://doi.org/10.1139/cjfas-2014-0345>
- Olmos M, Massiot-Granier F, Prévost E, Chaput G, Bradbury IR, Nevoux M, Rivot E (2019) Evidence for spatial coherence in time trends of marine life history traits of Atlantic salmon in the North Atlantic. *Fish Fish* 20:322–342. <https://doi.org/10.1111/faf.12345>
- Oomen RA, Kuparinen A, Hutchings JA (2020) Consequences of single-locus and tightly linked genomic architectures for evolutionary responses to environmental change. *J Heredity* esaa020. <https://doi.org/10.1093/jhered/esaa020>
- Oppen-Berntsen DO, Gram-Jensen E, Walther BT (1992) Zona radiata proteins are synthesized by rainbow trout (*Oncorhynchus mykiss*) hepatocytes in response to oestradiol-17 beta. *J Endocrinol*, 135:293–302. <https://doi.org/10.1677/joe.0.1350293>
- Oppen-Berntsen DO, Olsen SO, Rong CJ, Taranger GL, Swanson P, Walther BT (1994) Plasma levels of eggshell zr-proteins, estradiol-17β, and gonadotropins during an annual reproductive cycle of Atlantic salmon (*Salmo salar*). *J Exp Zool*, 268:59–70. <https://doi.org/10.1002/jez.1402680108>

- O'Toole CL et al (2015) The signature of fine scale local adaptation in Atlantic salmon revealed from common garden experiments in nature. *Evol Appl* 8:881–900. <https://doi.org/10.1111/eva.12299>
- Páez DJ, Brisson-Bonenfant C, Rossignol O, Guderley HE, Bernatchez L, Dodson JJ (2011) Alternative developmental pathways and the propensity to migrate: a case study in the Atlantic salmon. *J Evol Biol* 24:245–255. <https://doi.org/10.1111/j.1420-9101.2010.02159.x>
- Pakkasmaa S, Peuhkuri N, Laurila A, Hirvonen H, Ranta E (2001) Female and male contribution to egg size in salmonids. *Evol Ecol* 15:143–153. <https://doi.org/10.1023/A:1013873810905>
- Pankhurst NW, Porter MJR (2003) Cold and dark or warm and light: variations on the theme of environmental control of reproduction. *Fish Physiol Biochem* 28:385–389. <https://doi.org/10.1023/B:FISH.0000030602.51939.50>
- Parhar IS, Iwata M, Pfaff DW, Schwanzel-Fukuda M (1995) Embryonic development of gonadotropin-releasing hormone neurons in the sockeye salmon. *J Comp Neurol* 362:256–270. <https://doi.org/10.1002/cne.903620208>
- Park H-K, Ahima RS (2015) Physiology of leptin: energy homeostasis, neuroendocrine function and metabolism *Metabolism - Clinical and Experimental* 64:24–34. <https://doi.org/10.1016/j.metabol.2014.08.004>
- Pearse DE (2016) Saving the spandrels? Adaptive genomic variation in conservation and fisheries management. *J Fish Biol* 89:2697–2716. <https://doi.org/10.1111/jfb.13168>
- Pedersen S et al. (2013) Quantitative trait loci for precocious parr maturation, early smoltification, and adult maturation in double-backcrossed trans-Atlantic salmon (*Salmo salar*). *Aquaculture*, 410–411:164–171. <https://doi.org/10.1016/j.aquaculture.2013.06.039>
- Perrier C, Guyomard R, Bagliniere J-L, Nikolic N, Evanno G (2013) Changes in the genetic structure of Atlantic salmon populations over four decades reveal substantial impacts of stocking and potential resiliency. *Ecol Evol* 3:2334–2349. <https://doi.org/10.1002/ece3.629>
- Perrier C, Normandeau É, Dionne M, Richard A, Bernatchez L (2014) Alternative reproductive tactics increase effective population size and decrease inbreeding in wild Atlantic salmon. *Evol Appl* 7:1094–1106. <https://doi.org/10.1111/eva.12172>
- Perry JRB et al (2014) Parent-of-origin-specific allelic associations among 106 genomic loci for age at menarche. *Nature*, 514:92–97. <https://doi.org/10.1038/nature13545>
- Pershing AJ et al. (2015) Slow adaptation in the face of rapid warming leads to collapse of the Gulf of Maine cod fishery. *Science*, 350:809–812. <https://doi.org/10.1126/science.aac9819>
- Petersen CP, Reddien PW (2009) Wnt signaling and the polarity of the primary body axis. *Cell* 139:1056–1068. <https://doi.org/10.1016/j.cell.2009.11.035>
- Peterson RH, Martin-Robichaud DJ (1989) First feeding of Atlantic salmon (*Salmo salar* L.) fry as influenced by temperature regime *Aquaculture* 78:35–53. [https://doi.org/10.1016/0044-8486\(89\)90004-5](https://doi.org/10.1016/0044-8486(89)90004-5)
- Peterson RH, Spinney HCE, Sreedharan A (1977) Development of Atlantic salmon (*Salmo salar*) eggs and alevins under varied temperature regimes *Journal of the Fisheries Research Board of Canada* 34:31–43. <https://doi.org/10.1139/f77-004>
- Peyronnet A, Friedland KD (2008) Ó Maoileidigh N Different ocean and climate factors control the marine survival of wild and hatchery Atlantic salmon *Salmo salar* in the north-east Atlantic Ocean. *J Fish Biol* 73:945–962. <https://doi.org/10.1111/j.1095-8649.2008.01984.x>
- Piché J, Hutchings JA, Blanchard W (2008) Genetic variation in threshold reaction norms for alternative reproductive tactics in male Atlantic salmon *Salmo salar*. *Proc R Soc B Biol Sci* 275:1571–1575. <https://doi.org/10.1098/rspb.2008.0251>
- Piront ML, Schmidt R (1988) Inhibition of long-term memory formation by anti-ependymin antisera after active shock-avoidance learning in goldfish. *Brain Res* 442:53–62. [https://doi.org/10.1016/0006-8993\(88\)91431-x](https://doi.org/10.1016/0006-8993(88)91431-x)
- Planas JV, Swanson P (1995) Maturation-associated changes in the response of the salmon testis to the steroidogenic actions of gonadotropins (GTH I and GTH II) in vitro. *Biol Reprod*, 52:697–704. <https://doi.org/10.1095/biolreprod52.3.697>
- Plusa B, Hadjantonakis A-K (2018) *Cell Fate in Mammalian Development*. Elsevier Academic Press Inc., Cambridge
- Pohja-Mykrä M, Matilainen A, Kujala S, Hakala O, Harvio V, Törmä H, Kurki S (2018) Erätalouteen liittyvän yritys-toiminnan nykytila ja kehittämisedellytykset. <https://julkaisut.valtioneuvosto.fi/handle/10024/160877>
- Pokki H, Artell J, Mikkola J, Orell P, Ovaskainen V (2018) Valuing recreational salmon fishing at a remote site in Finland: A travel cost analysis. *Fish Res* 208:145–156. <https://doi.org/10.1016/j.fishres.2018.07.013>
- Power G (1958) The evolution of the freshwater races of the Atlantic salmon (*Salmo salar* L.) in eastern North America *Arctic* 11:86–92. <https://doi.org/10.14430/arctic3735>
- Prat F, Sumpter JP, Tyler CR (1996) Validation of radioimmunoassays for two salmon gonadotropins (GTH I and GTH II) and their plasma concentrations throughout the reproductive cycle in male and female rainbow trout (*Oncorhynchus mykiss*). *Biol Reprod*, 54:1375–1382. <https://doi.org/10.1095/biolreprod54.6.1375>
- Pritchard VL, Mäkinen H, Vähä J-P, Erkinaro J, Orell P, Primmer CR (2018) Genomic signatures of fine-scale local adaptation in Atlantic salmon suggest involvement of sexual maturation, energy homeostasis, behaviour and immune defence-related genes. *Mol Ecol*. <https://doi.org/10.1111/271528>
- Quinn TP (1993) A review of homing and straying of wild and hatchery-produced salmon. *Fish Res* 18:29–44. [https://doi.org/10.1016/0165-7836\(93\)90038-9](https://doi.org/10.1016/0165-7836(93)90038-9)
- Quinn TP, McGinnity P, Cross TF (2006) Long-term declines in body size and shifts in run timing of Atlantic salmon in Ireland. *J Fish Biol*:1713–1730. <https://doi.org/10.1111/j.1095-8649.2006.01017.x>
- Radchuk V et al (2019) Adaptive responses of animals to climate change are most likely insufficient. *Nat Commun* 10:3109. <https://doi.org/10.1038/s41467-019-10924-4>
- Reed TE, Prodöhl P, Bradley C, Gilbey J, McGinnity P, Primmer CR, Bacon PJ (2018) Heritability estimation via molecular pedigree reconstruction in a wild fish population reveals substantial evolutionary potential for sea-age at

- maturity, but not size within age-classes. *Canadian J Fish Aquat Sci*. <https://doi.org/10.1139/cjfas-2018-0123>
- Reinton N, Collas P, Haugen TB, Skålhegg BS, Hansson V, Jahnsen T, Taskén K (2000) Localization of a novel human A-kinase-anchoring protein, hAKAP220, during spermatogenesis. *Develop Biol*, 223:194–204. <https://doi.org/10.1006/dbio.2000.9725>
- Reznick DN, Ghalambor CK (2005) Can commercial fishing cause evolution? Answers from guppies (*Poecilia reticulata*). *Canadian J Fish Aquat Sci* 62:791–801. <https://doi.org/10.1139/f05-079>
- Reznick D, Bryant M, Holmes D (2006) The evolution of senescence and post-reproductive lifespan in guppies (*Poecilia reticulata*). *PLoS Biol* 4:e7-e7. <https://doi.org/10.1371/journal.pbio.0040007>
- Richard A, Dionne M, Wang J, Bernatchez L (2013) Does catch and release affect the mating system and individual reproductive success of wild Atlantic salmon (*Salmo salar* L.)? *Mol Ecol* 22:187–200. <https://doi.org/10.1111/mec.12102>
- Rikardsen AH et al (2004) Geographical differences in marine feeding of Atlantic salmon post-smolts in Norwegian fjords. *J Fish Biol* 64:1655–1679. <https://doi.org/10.1111/j.1095-8649.2004.00425.x>
- Rikardsen AH, Dempson JB (2010) Dietary life-support: the food and feeding of Atlantic salmon at sea. In: Aas Ø, Einum S, Klemetsen A, Skurdal J (eds) *Atlantic Salmon Ecology*. Wiley-Blackwell, pp 115–143. <https://doi.org/10.1002/9781444327755.ch5>
- Roff DA (1993) *Evolution of Life Histories: Theory and Analysis*. Chapman & Hall, New York
- Rowe DK, Thorpe JE, Shanks AM (1991) Role of fat stores in the maturation of male Atlantic salmon (*Salmo salar*) parr. *Canadian J Fish Aquat Sci*, 48:405–413. <https://doi.org/10.1139/f91-052>
- Sakai N, Ueda H, Suzuki N, Nagahama Y (1989) Steroid production by amago salmon (*Oncorhynchus rhodurus*) testes at different development stages *Gen Comp Endocrinol* 75:231–240. [https://doi.org/10.1016/0016-6480\(89\)90075-0](https://doi.org/10.1016/0016-6480(89)90075-0)
- Salminen M (1997) Relationships between smolt size, postsmolt growth and sea age at maturity in Atlantic salmon reared in the Baltic Sea. *J Appl Ichthyol* 13:121–130. <https://doi.org/10.1111/j.1439-0426.1997.tb00111.x>
- Salminen M, Erkamo E, Salmi J (2001) Diet of post-smolt and one-sea-winter Atlantic salmon in the Bothnian Sea. *Northern Baltic* 58:16–35. <https://doi.org/10.1111/j.1095-8649.2001.tb00496.x>
- Sambrovi E, Rolland AD, Lareyre J-J, Le Gac F (2013) Fsh and Lh have common and distinct effects on gene expression in rainbow trout testis. *J Mol Endocrinol* 50:1–18. <https://doi.org/10.1530/JME-12-0197>
- Saunders RL, Henderson EB (1970) Influence of photoperiod on smolt development and growth of Atlantic salmon (*Salmo solar*). *J Fish Res Board Canada* 27:1295–1311. <https://doi.org/10.1139/f70-151>
- Saunders MW, McFarlane GA (1993) Age and length at maturity of the female spiny dogfish, *Squalus acanthias*, in the Strait of Georgia, British Columbia, Canada. *Environ Biol Fishes* 38:49–57. <https://doi.org/10.1007/BF00842903>
- Saura M, Caballero A, Caballero P, Morán P (2008) Impact of precocious male parr on the effective size of a wild population of Atlantic salmon. *Freshw Biol* 53:2375–2384. <https://doi.org/10.1111/j.1365-2427.2008.02062.x>
- Schindler DE, Hilborn R, Chasco B, Boatright CP, Quinn TP, Rogers LA, Webster MS (2010) Population diversity and the portfolio effect in an exploited species. *Nature* 465:609. <https://doi.org/10.1038/nature09060>
- Schindler DE, Armstrong JB, Reed TE (2015) The portfolio concept in ecology and evolution. *Front Ecol Environ* 13:257–263. <https://doi.org/10.1890/140275>
- Schulz RdW (2005) Menting S, Bogerd J, França LR, Vilela DAR, Godinho HP Sertoli cell proliferation in the adult testis—evidence from two fish species belonging to different orders. *Biol Reprod* 73:891–898. <https://doi.org/10.1095/biolreprod.105.039891>
- Schulz RW, Andersson E, Taranger GL (2006) Photoperiod manipulation can stimulate or inhibit pubertal testis maturation in Atlantic salmon (*Salmo salar*). *Animal Reprod* 3:121–126
- Schulz RW, Taranger GL, Bogerd J, Nijenhuis W, Norberg B, Male R, Andersson E (2019) Entry into puberty is reflected in changes in hormone production but not in testicular receptor expression in Atlantic salmon (*Salmo salar*). *Reproduct Biol Endocrinol* 17:48. <https://doi.org/10.1186/s12958-019-0493-8>
- Scott AP, Sheldrick EL, Flint AP (1982) Measurement of 17 alpha, 20 beta-dihydroxy-4-pregnen-3-one in plasma of trout (*Salmo gairdneri* Richardson): seasonal changes and response to salmon pituitary extract. *Gen Comp Endocrinol* 46:444–451. [https://doi.org/10.1016/0016-6480\(82\)90098-3](https://doi.org/10.1016/0016-6480(82)90098-3)
- Seear PJ, Carmichael SN, Talbot R, Taggart JB, Bron JE, Sweeney GE (2010) Differential gene expression during smoltification of Atlantic Salmon (*Salmo salar* L.): a first large-scale microarray study. *Mar Biotechnol* 12:126–140. <https://doi.org/10.1007/s10126-009-9218-x>
- Shearer WM (1990) The Atlantic salmon (*Salmo salar* L.) of the North Esk with particular reference to the relationship between both river and sea age and time of return to home waters. *Fish Res* 10:93–123. [https://doi.org/10.1016/0165-7836\(90\)90017-P](https://doi.org/10.1016/0165-7836(90)90017-P)
- Sheridan MA (1989) Alterations in lipid metabolism accompanying smoltification and seawater adaptation of salmonid fish. *Aquaculture* 82:191–203. [https://doi.org/10.1016/0044-8486\(89\)90408-0](https://doi.org/10.1016/0044-8486(89)90408-0)
- Sheridan MA, Harmon JS (1994) Adipose tissue. In: Hochachka PW, Mommsen TP (eds) *Biochemistry and molecular biology of fishes*, vol 3. vol Analytical Techniques. Elsevier, pp 305–311. <https://doi.org/10.1016/B978-0-444-82033-4.50032-5>
- Silverstein JT, Shimma H, Ogata H (1997) Early maturity in amago salmon (*Oncorhynchus masu ishikawai*): an association with energy storage. *Canadian J Fish Aquat Sci* 54:444–451. <https://doi.org/10.1139/f96-284>
- Simon E, Thézé N, Fédou S, Thiébaud P, Fauchoux C (2017) Vestigial-like 3 is a novel Ets1 interacting partner and regulates trigeminal nerve formation and cranial neural crest migration. *Biol Open* 6:1528. <https://doi.org/10.1242/bio.026153>

- Sinclair-Waters M, Ødegård J, Korsvoll SA, Moen T, Lien S, Primmer CR, Barson NJ (2020) Beyond large-effect loci: large-scale GWAS reveals a mixed large-effect and polygenic architecture for age at maturity of Atlantic salmon. *Genet Sel Evol* 52:9. <https://doi.org/10.1186/s12711-020-0529-8>
- Skaala Ø et al (2019) An extensive common-garden study with domesticated and wild Atlantic salmon in the wild reveals impact on smolt production and shifts in fitness traits. *Evol Appl* 12:1001–1016. <https://doi.org/10.1111/eva.12777>
- Skaar KS, Nóbrega RH, Magaraki A, Olsen LC, Schulz RW, Male R (2011) Proteolytically activated, recombinant anti-Müllerian hormone inhibits Androgen secretion, proliferation, and differentiation of spermatogonia in adult zebrafish testis organ cultures. *Endocrinology* 152:3527–3540. <https://doi.org/10.1210/en.2010-1469>
- Skaftnesmo KO et al (2017) Integrative testis transcriptome analysis reveals differentially expressed miRNAs and their mRNA targets during early puberty in Atlantic salmon. *BMC Genomics* 18:801. <https://doi.org/10.1186/s12864-017-4205-5>
- Spear MJ, Embke HS, Krysan PJ, Vander Zanden MJ (2020) Application of eDNA as a tool for assessing fish population abundance. *Environ DNA* n/a. <https://doi.org/10.1002/edn3.94>
- Specker JL, Eales JG, Tagawa M (2000) Tyler IIIWA Parr-smolt transformation in Atlantic salmon: thyroid hormone deiodination in liver and brain and endocrine correlates of change in rheotactic behavior. *Canadian J Zool* 78:696–705. <https://doi.org/10.1139/z99-258>
- Sprent J, Jones SM, Nicol SC (2012) Does leptin signal adiposity in the egg-laying mammal, *Tachyglossus aculeatus*? *Gen Comp Endocrinol* 178:372–379. <https://doi.org/10.1016/j.ygcen.2012.06.021>
- Stead SM, Houlihan DF, McLay HA, Johnstone R (1999) Food consumption and growth in maturing Atlantic salmon (*Salmo salar*). *Canadian J of Fish Aquat Sci* 56:2019–2028. <https://doi.org/10.1139/f99-136>
- Stearns SC (1992) *The Evolution of Life Histories*. Oxford University, Oxford, UK
- Stewart DC, Smith GW, Youngson AF (2002) Tributary-specific variation in timing of return of adult Atlantic salmon (*Salmo salar*) to fresh water has a genetic component. *Canadian J Fish Aquat Sci* 59:276–281. <https://doi.org/10.1139/f02-011>
- Strøm JF et al (2019) Ocean predation and mortality of adult Atlantic salmon. *Sci Rep* 9:7890–7890. <https://doi.org/10.1038/s41598-019-44041-5>
- Strøm JF, Thorstad EB, Hedger RD, Rikardsen AH (2018) Revealing the full ocean migration of individual Atlantic salmon. *Animal Biotelem*. <https://doi.org/10.1186/s40317-018-0146-2>
- Sundt-Hansen LE et al (2018) Modelling climate change effects on Atlantic salmon: Implications for mitigation in regulated rivers. *Sci Total Environ* 631–632:1005–1017. <https://doi.org/10.1016/j.scitotenv.2018.03.058>
- Suuronen P, Jounela P (2010) Introducing run-size driven fisheries management for the coastal fishery of Atlantic salmon: Preseason forecasts for policy makers. *Mar Policy* 34:679–689. <https://doi.org/10.1016/j.marpol.2009.12.009>
- Suzuki K, Kanamori A, Nagahama Y, Kawauchi H (1988) Development of salmon GTH I and GTH II radioimmunoassays. *Gen Comp Endocrinol* 71:459–467. [https://doi.org/10.1016/0016-6480\(88\)90275-4](https://doi.org/10.1016/0016-6480(88)90275-4)
- Suzuki K, Nagahama Y, Kawauchi H (1988) Steroidogenic activities of two distinct salmon gonadotropins. *Gen Comp Endocrinol* 71:452–458
- Taborsky B (2008) Alternative reproductive tactics in fish. In: Oliveira R, Taborsky M, Brockmann HJ (eds) *Alternative reproductive tactics: an introgrative approach*. Cambridge University Press, Cambridge, pp 251–299
- Taggart JB, McLaren IS, Hay DW, Webb JH, Youngson AF (2001) Spawning success in Atlantic salmon (*Salmo salar* L.): a long-term DNA profiling-based study conducted in a natural stream. *Mol Ecol* 10:1047–1060. <https://doi.org/10.1046/j.1365-294X.2001.01254.x>
- Takahashi A, Kobayashi Y, Amano M, Yamanome T (2009) Structural and functional diversity of proopiomelanocortin in fish with special reference to barfin flounder. *Peptides* 30:1374–1382. <https://doi.org/10.1016/j.peptides.2009.04.014>
- Taranger GL et al (2010) Control of puberty in farmed fish. *Gen Comp Endocrinol* 165:483–515. <https://doi.org/10.1016/j.ygcen.2009.05.004>
- Taranger GL, Hansen T (1993) Ovulation and egg survival following exposure of Atlantic salmon, *Salmo salar* L., broodstock to different water temperatures. *Aquacult Fish Manag* 24:151–156. <https://doi.org/10.1111/j.1365-2109.1993.tb00535.x>
- Taranger GL, Haux C, Hansen T, Stefansson SO, Björnsson BT, Walther BT, Kryvi H (1999) Mechanisms underlying photoperiodic effects on age at sexual maturity in Atlantic salmon. *Salmo salar Aquacult* 177:47–60. [https://doi.org/10.1016/S0044-8486\(99\)00068-X](https://doi.org/10.1016/S0044-8486(99)00068-X)
- Tentelier C, Lepais O, Larranaga N, Manicki A, Lange F, Rives J (2016) Sexual selection leads to a tenfold difference in reproductive success of alternative reproductive tactics in male Atlantic salmon. *Sci Nat* 103:47. <https://doi.org/10.1007/s00114-016-1372-1>
- Teo JL, Kahn M (2010) The Wnt signaling pathway in cellular proliferation and differentiation: a tale of two coactivators. *Adv Drug Deliv Rev* 62:1149–1155. <https://doi.org/10.1016/j.addr.2010.09.012>
- Thomaz D, Beall E, Burke T (1997) Alternative reproductive tactics in atlantic salmon: factors affecting mature parr success. *Proc R Soc London Ser B Biol Sci* 264:219–226. <https://doi.org/10.1098/rspb.1997.0031>
- Thorpe JE (1986) Age at first maturity in Atlantic salmon, *Salmo salar*: freshwater period influences and conflicts with smolting. In: Meerburg DJ (ed) *Salmonid Age at Maturity*, vol 89. Canadian Special Publications in Fisheries and Aquatic Science. National Research Council of Canada, Ottawa, Canada, pp 7–14
- Thorpe JE (1994) Reproductive strategies in Atlantic salmon *Salmo salar* L. *Aquacult Res* 25:77–87. <https://doi.org/10.1111/j.1365-2109.1994.tb00668.x>
- Thorpe JE (2007) Maturation responses of salmonids to changing developmental opportunities. *Mar Ecol Prog Ser* 335:285–288. <https://doi.org/10.3354/meps335285>
- Thorpe JE, Metcalfe NB (1998) Is smolting a positive or a negative developmental decision? *Aquaculture*

- 168:95–103. [https://doi.org/10.1016/S0044-8486\(98\)00342-1](https://doi.org/10.1016/S0044-8486(98)00342-1)
- Thorpe JE, Morgan RIG (1980) Growth-rate and smolting-rate of progeny of male Atlantic salmon parr *Salmo salar* L. *J Fish Biol* 17:451–460. <https://doi.org/10.1111/j.1095-8649.1980.tb02778.x>
- Thorpe JE, Ross LG, Struthers G, Watts W (1981) Tracking Atlantic salmon smolts, *Salmo salar* L., through Loch Voil. *Scotland J Fish Biol* 19:519–537. <https://doi.org/10.1111/j.1095-8649.1981.tb03820.x>
- Thorpe JE, Mangel M, Metcalfe NB, Huntingford FA (1998) Modelling the proximate basis of salmonid life-history variation, with application to Atlantic salmon *Salmo salar* L. *Evol Ecol* 12:581–599. <https://doi.org/10.1023/A:1022351814644>
- Thorstad EB, Økland F, Aarestrup K, Heggberget TG (2008) Factors affecting the within-river spawning migration of Atlantic salmon, with emphasis on human impacts. *Rev Fish Biol Fish* 18:345–371. <https://doi.org/10.1007/s11160-007-9076-4>
- Tilman D, Lehman Clarence L, Bristow Charles E (1998) Diversity-stability relationships: statistical inevitability or ecological consequence? *Am Nat* 151:277–282. <https://doi.org/10.1086/286118>
- Todd CD, Hughes SL, Marshall CT, MacLean JC, Lonergan ME, Biuw EM (2008) Detrimental effects of recent ocean surface warming on growth condition of Atlantic salmon 14:958–970. <https://doi.org/10.1111/j.1365-2486.2007.01522.x>
- Trombley S, Mustafa A, Schmitz M (2014) Regulation of the seasonal leptin and leptin receptor expression profile during early sexual maturation and feed restriction in male Atlantic salmon, *Salmo salar* L., parr. *Gen Comp Endocrinol* 204:60–70. <https://doi.org/10.1016/j.ygcen.2014.04.033>
- Tu W, Wagner EK, Eckert GJ, Yu Z, Hannon T, Pratt JH, He C (2015) Associations between menarche-related genetic variants and pubertal growth in male and female adolescents. *J Adolesc Health* 56:66–72. <https://doi.org/10.1016/j.jadohealth.2014.07.020>
- Ueda H, Young G, Crim LW, Kambegawa A, Nagahama Y (1983) 17alpha,20beta-dihydroxy-4-pregnen-3-one: plasma levels during sexual maturation and in vitro production by the testes of amago salmon (*Oncorhynchus rhodurus*) and rainbow trout (*Salmo gairdneri*). *Gen Comp Endocrinol* 51:106–112. [https://doi.org/10.1016/0016-6480\(83\)90103-x](https://doi.org/10.1016/0016-6480(83)90103-x)
- Uusi-Heikkilä S et al (2015) The evolutionary legacy of size-selective harvesting extends from genes to populations. *Evol Appl* 8:597–620. <https://doi.org/10.1111/eva.12268>
- Vähä J-P et al (2011) Temporally stable population-specific differences in run timing of one-sea-winter Atlantic salmon returning to a large river system. *Evol Appl* 4:39–53. <https://doi.org/10.1111/j.1752-4571.2010.00131.x>
- Vähä J-P, Erkinaro J, Niemelä E, Primmer CR (2007) Life-history and habitat features influence the within-river genetic structure of Atlantic salmon. *Mol Ecol* 16:2638–2654. <https://doi.org/10.1111/j.1365-294X.2007.03329.x>
- Vähä J-P, Erkinaro J, Falkegård M, Orell P, Niemelä E (2017) Genetic stock identification of Atlantic salmon and its evaluation in a large population complex. *Can J Fish Aquat Sci* 74:327–338. <https://doi.org/10.1139/cjfas-2015-0606>
- Van Leeuwen TE, McLennan D, McKelvey S, Stewart DC, Adams CE, Metcalfe NB (2016) The association between parental life history and offspring phenotype in Atlantic salmon. *J Exp Biol* 219:374. <https://doi.org/10.1242/jeb.122531>
- Varelas X et al (2010) The Hippo pathway regulates Wnt/beta-catenin signaling. *Dev Cell* 18:579–591. <https://doi.org/10.1016/j.devcel.2010.03.007>
- Veale AJ, Russello MA (2017) An ancient selective sweep linked to reproductive life history evolution in sockeye salmon. *Sci Rep* 7:1–10. <https://doi.org/10.1038/s41598-017-01890-2>
- Verta J-P et al (2020) Cis-regulatory differences in isoform expression associate with life history strategy variation in Atlantic salmon. *PLoS Genetics* 16:e1009055. <https://doi.org/10.1371/journal.pgen.1009055>
- Veselov AE, Kazakov RV, Sysoyeva MI, Bahmet IN (1998) Ontogenesis of rheotactic and optomotor responses of juvenile Atlantic salmon. *Aquaculture* 168:17–26. [https://doi.org/10.1016/S0044-8486\(98\)00362-7](https://doi.org/10.1016/S0044-8486(98)00362-7)
- Vladić TV (2001) Sperm quality in the alternative reproductive tactics of Atlantic salmon: the importance of the loaded raffle mechanism. *Proc R Soc London Ser B Biol Sci* 268:2375
- Vladić TV, Afzelius BrA, Bronnikov GE, (2002) Sperm quality as reflected through morphology in salmon alternative life histories. *Biol Reprod* 66:98–105. <https://doi.org/10.1095/biolreprod66.1.98>
- von Schalburg KR et al (2011) Regulation and expression of sexual differentiation factors in embryonic and extragonadal tissues of Atlantic salmon. *BMC Genomics* 12:31–31. <https://doi.org/10.1186/1471-2164-12-31>
- Vornanen M, Paaanen V (2006) Seasonal changes in glycogen content and Na⁺-K⁺-ATPase activity in the brain of crucian carp. *Am J Physiol Regul Integr Comp Physiol* 291:R1482–1489. <https://doi.org/10.1152/ajpregu.00172.2006>
- Vrtílek M, Žák J, Pšenička M, Reichard M (2018) Extremely rapid maturation of a wild African annual fish. *Curr Biol* 28:R822–R824. <https://doi.org/10.1016/j.cub.2018.06.031>
- Waters CD, Clemento A, Aykanat T, Garza JC, Naish KA, Narum S, Primmer CR (2021) Heterogeneous genetic basis of age at maturity in salmonid fishes. *Mol Ecol* 30:1435–1456. <https://doi.org/10.1111/mec.15822>
- Webb JH, McLay HA (1996) Variation in the time of spawning of Atlantic salmon (*Salmo salar*) and its relationship to temperature in the Aberdeenshire Dee Scotlan. *Canadian J Fish Aquat Sci* 53:2739–2744. <https://doi.org/10.1139/f96-240>
- Webb J, Verspoor E, Aubin-Horth N, Romakkaniemi A, Amiro P (2007) The Atlantic salmon. In: Verspoor E, Stradmeyer L, Nielsen JL (eds) *The Atlantic Salmon: Genetics, Conservation and Management*. Blackwell Publishing Ltd., Oxford, pp 17–56. <https://doi.org/10.1002/9780470995846.ch2>
- Weir LK, Breau C, Hutchings JA, Cunjak RA (2010) Multiple paternity and variance in male fertilization success within Atlantic salmon *Salmo salar* redds in a naturally spawning

- population. *J Fish Biol* 77:479–493. <https://doi.org/10.1111/j.1095-8649.2010.02690.x>
- Whalen KG, Parrish DL (1999) Effect of maturation on parr growth and smolt recruitment of Atlantic salmon. *Can J Fish Aquat Sci* 56:79–86. <https://doi.org/10.1139/f98-154>
- Whittington CM, Wilson AB (2013) The role of prolactin in fish reproduction. *Gen Comp Endocrinol* 191:123–136. <https://doi.org/10.1016/j.ygcen.2013.05.027>
- Willis SC, Hess JE, Fryer JK, Whiteaker JM, Brun C, Gerstenberger R, Narum SR (2020) Steelhead (*Oncorhynchus mykiss*) lineages and sexes show variable patterns of association of adult migration timing and age-at-maturity traits with two genomic regions. *Evol Appl* 13:2836–2856. <https://doi.org/10.1111/eva.13088>
- Xie H et al (2015) Homeodomain Proteins SIX3 and SIX6 Regulate Gonadotrope-specific Genes During Pituitary Development. *Mol Endocrinol* 29:842–855. <https://doi.org/10.1210/me.2014-1279>
- Yan L, Swanson P, Dickhoff WW (1992) A two-receptor model for salmon gonadotropins (GTH I and GTH II). *Biol Reprod* 47:418–427. <https://doi.org/10.1095/biolreprod47.3.418>
- Young G, Crim LW, Kagawa H, Kambegawa A, Nagahama Y (1983) Plasma 17 alpha, 20 beta-dihydroxy-4-pregnen-3-one levels during sexual maturation of amago salmon (*Oncorhynchus rhodurus*): correlation with plasma gonadotropin and in vitro production by ovarian follicles. *Gen Comp Endocrinol* 51:96–105. [https://doi.org/10.1016/0016-6480\(83\)90102-8](https://doi.org/10.1016/0016-6480(83)90102-8)

Publisher's Note Springer Nature remains neutral with regard to jurisdictional claims in published maps and institutional affiliations.